

WELL LOCATION CERTIFICATE

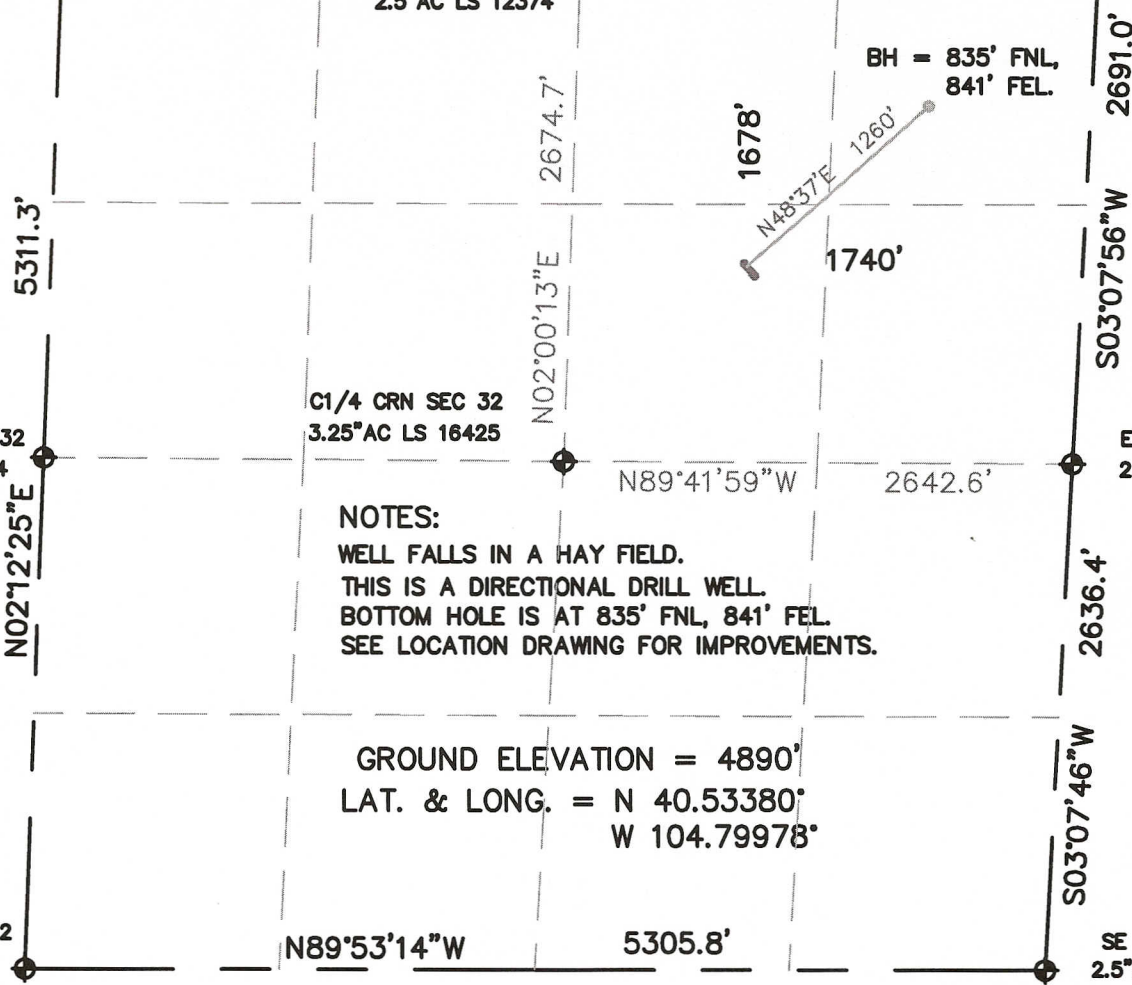
NW CRN SEC. 32
2.5"AC LS 12374

SECTION 32, TOWNSHIP 7 NORTH, RANGE 66 WEST, 6TH P.M.
S89°57'58"W 2696.2' S90°00'00"E 2696.0'

NE CRN SEC. 32
3.25"AC LS 28285

N1/4 CRN SEC 32
2.5"AC LS 12374

BASIS OF BEARINGS



W1/4 CRN SEC 32
2.5"AC LS 12374

C1/4 CRN SEC 32
3.25"AC LS 16425

E1/4 CRN SEC 32
2.5"AC LS 16154

NOTES:

WELL FALLS IN A HAY FIELD.
THIS IS A DIRECTIONAL DRILL WELL.
BOTTOM HOLE IS AT 835' FNL, 841' FEL.
SEE LOCATION DRAWING FOR IMPROVEMENTS.

GROUND ELEVATION = 4890'
LAT. & LONG. = N 40.53380°
W 104.79978°

SW CRN SEC. 32
3"AC LS 20685

N89°53'14"W

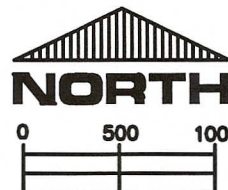
5305.8'

SE CRN SEC. 32
2.5"AC LS 16154

I HEREBY STATE TO PETROLEUM DEVELOPMENT CORP. THAT THIS WELL LOCATION CERTIFICATE FOR THE WELL MOODY 41-32D IS LOCATED 1678' FNL & 1740' FEL, SEC. 32, T7N, R66W, 6PM.

LEGEND

- ◆ = FOUND MONUMENT
- = PROPOSED WELL
- = BOTTOM HOLE



SCALE 1" = 1000'

ELEVATION SOURCE = USGS 7.5' QUAD.MAP CONTOURS
NGVD 1929 DATUM.

LAT. & LONG. ARE DIFFERENTIALLY CORRECTED (NAD'83)
USING (DGPS) WITH (PDOP) VALUES LESS THAN SIX (6).

SHOWN DISTANCES ARE FIELD MEASURED - EXTERIOR SECTION LINES
ARE DRAWN TO SCALE (BEST APPROX. OR FOUND MONUMENT ◆).

DISTANCES TO WELL SHOWN PERPENDICULAR
TO SECTION LINES.



THOMAS G. CARLSON, PLS 24657
HORSESHOE SURVEYING, LLC

THIS IS NOT A MONUMENTED BOUNDARY SURVEY, IT IS ONLY A
DRAWING INTENDED TO DEPICT THE WELL LOCATION TO SECTION LINES.

PREPARED BY: HORSESHOE SURVEYING, LLC
PO BOX 150458
LAKEWOOD, CO 80215
(720)872-0196

WELL NAME:

MOODY 41-32D

LOCATION:

WELD COUNTY, CO
NE1/4, SEC. 32, T7N, R66W, 6TH P.M.

DRAWING DATE:
7-23-10

FIELD DATE:
7-22-10

BY: TGC

CHKD:

JOB NO.

SHEET NO.

1 OF 1