

State of Colorado

Oil and Gas Conservation Commission

1120 Lincoln Street, Suite 801, Denver Colorado 80203 (303)

WELL ABANDONMENT REPORT



02577325

Submit original plus one copy. This form is to be submitted as an intent whenever a plugging is planned on a borehole. The approved intent shall be valid for twelve months after the approval date after that period a new intent will be required. After the plugging is complete, this form and one copy shall again be submitted as a subsequent report of the work as actually completed.

DE

JET

IOE

ES

RECEIVED

AUG 09 2010

COGCC/Rifle Office

COGCC Operator Number: 28700

Name of Operator: ExxonMobil Oil Corporation

Address: P.O. Box 4358, CORP-MI-207

City: Houston State: Tx Zip: 77210-4358

Contact Name & Telephone

Lynn Neely

No: 281-654-1949

Fax: 281-654-1940

24 hour notice required,
contact:

Tel:

API Number 05-103-07959

Well Name: Piceance Creek Unit Well Number: T36-30G

Location (QtrQtr, Sec, Twp, Rng, Meridian): NESW, Sec. 30, T1S, R95W, 6th PM

County: Rio Blanco Federal, Indian or State Lease Number: COD037922

Field Name: Piceance Creek Field Number: 68800

Complete the

Attachment Checklist

Wellbore Diagram

Cement Job Summary

Wireline Job Summary

Oper OGCC

X

☒ Notice of Intent to Abandon☐ Subsequent Report of Abandonment

Only Complete the Following Background Information for Intent to Abandon

Latitude: 39.843248 Longitude: -108.101701

GPS Data:

Date of Measurement: 11/30/2009 PDOP Reading: 2.6

Instrument Operator's Name: P. Pierce

Reason for Abandonment ☐ Dry ☒ Production Sub-economic ☐ Mechanical Problems ☐ OtherCasing to be Pulled: ☐ Yes ☒ No

Top of Casing Cement:

Fish in Hole: ☐ Yes ☒ No

If yes, explain details below

Wellbore has Uncemented Casing Leaks ☐ Yes ☒ No If yes, explain details below

Details:

Current and Previously Abandoned Zones

Formation	Perforations - Top	Perforations - Bottom	Date Abandoned	Method of Isolation (None, Squeezed, BP, Cement, etc.)	Plug Depth
Wasatch F&G	5718	6514	07/20/99	BP @ 5700' w/35' cement on top	5665
Douglas Creek	3188	3238		See procedure below and attached	3050

Casing History

String	Size of Hole	Size of Casing	Weight per ft	Setting Depth	Sacks Cement	Cement Bottom	Cement Top
Surface	12-1/4	9-5/8	32	865	400	865	0
Production	8-3/4	5-1/2	15.5	6790	950	6790	997

Plugging Procedure for Intent and Subsequent Report

CIBP #1: Depth 5,650' with 5 sacks cmt on top. CIBP #2: Depth 3,138' with 5 sacks cmt on top. CIBP #3: Depth 1,000' with 5 sacks cmt on top. CIBP #4: Depth 500' with 5 sacks cmt on top. CIBP #5: Depth 250' with 5 sacks cmt on top. CIBP #6: Depth 125' with 5 sacks cmt on top. CIBP #7: Depth 62.5' with 5 sacks cmt on top. CIBP #8: Depth 31.25' with 5 sacks cmt on top. CIBP #9: Depth 15.625' with 5 sacks cmt on top. CIBP #10: Depth 7.8125' with 5 sacks cmt on top. CIBP #11: Depth 3.90625' with 5 sacks cmt on top. CIBP #12: Depth 1.953125' with 5 sacks cmt on top. CIBP #13: Depth 0.9765625' with 5 sacks cmt on top. CIBP #14: Depth 0.48828125' with 5 sacks cmt on top. CIBP #15: Depth 0.244140625' with 5 sacks cmt on top. CIBP #16: Depth 0.1220703125' with 5 sacks cmt on top. CIBP #17: Depth 0.06103515625' with 5 sacks cmt on top. CIBP #18: Depth 0.030517578125' with 5 sacks cmt on top. CIBP #19: Depth 0.0152587890625' with 5 sacks cmt on top. CIBP #20: Depth 0.00762939453125' with 5 sacks cmt on top. CIBP #21: Depth 0.003814697265625' with 5 sacks cmt on top. CIBP #22: Depth 0.0019073486328125' with 5 sacks cmt on top. CIBP #23: Depth 0.00095367431640625' with 5 sacks cmt on top. CIBP #24: Depth 0.000476837158203125' with 5 sacks cmt on top. CIBP #25: Depth 0.0002384185791015625' with 5 sacks cmt on top. CIBP #26: Depth 0.00011920928955078125' with 5 sacks cmt on top. CIBP #27: Depth 5.96e-05' with 5 sacks cmt on top. CIBP #28: Depth 2.98e-05' with 5 sacks cmt on top. CIBP #29: Depth 1.49e-05' with 5 sacks cmt on top. CIBP #30: Depth 7.45e-06' with 5 sacks cmt on top. CIBP #31: Depth 3.72e-06' with 5 sacks cmt on top. CIBP #32: Depth 1.86e-06' with 5 sacks cmt on top. CIBP #33: Depth 9.3e-07' with 5 sacks cmt on top. CIBP #34: Depth 4.65e-07' with 5 sacks cmt on top. CIBP #35: Depth 2.32e-07' with 5 sacks cmt on top. CIBP #36: Depth 1.16e-07' with 5 sacks cmt on top. CIBP #37: Depth 5.8e-08' with 5 sacks cmt on top. CIBP #38: Depth 2.9e-08' with 5 sacks cmt on top. CIBP #39: Depth 1.45e-08' with 5 sacks cmt on top. CIBP #40: Depth 7.25e-09' with 5 sacks cmt on top. CIBP #41: Depth 3.62e-09' with 5 sacks cmt on top. CIBP #42: Depth 1.81e-09' with 5 sacks cmt on top. CIBP #43: Depth 9.05e-10' with 5 sacks cmt on top. CIBP #44: Depth 4.52e-10' with 5 sacks cmt on top. CIBP #45: Depth 2.26e-10' with 5 sacks cmt on top. CIBP #46: Depth 1.13e-10' with 5 sacks cmt on top. CIBP #47: Depth 5.65e-11' with 5 sacks cmt on top. CIBP #48: Depth 2.82e-11' with 5 sacks cmt on top. CIBP #49: Depth 1.41e-11' with 5 sacks cmt on top. CIBP #50: Depth 7.05e-12' with 5 sacks cmt on top. CIBP #51: Depth 3.52e-12' with 5 sacks cmt on top. CIBP #52: Depth 1.76e-12' with 5 sacks cmt on top. CIBP #53: Depth 8.8e-13' with 5 sacks cmt on top. CIBP #54: Depth 4.4e-13' with 5 sacks cmt on top. CIBP #55: Depth 2.2e-13' with 5 sacks cmt on top. CIBP #56: Depth 1.1e-13' with 5 sacks cmt on top. CIBP #57: Depth 5.5e-14' with 5 sacks cmt on top. CIBP #58: Depth 2.75e-14' with 5 sacks cmt on top. CIBP #59: Depth 1.37e-14' with 5 sacks cmt on top. CIBP #60: Depth 6.85e-15' with 5 sacks cmt on top. CIBP #61: Depth 3.42e-15' with 5 sacks cmt on top. CIBP #62: Depth 1.71e-15' with 5 sacks cmt on top. CIBP #63: Depth 8.55e-16' with 5 sacks cmt on top. CIBP #64: Depth 4.27e-16' with 5 sacks cmt on top. CIBP #65: Depth 2.14e-16' with 5 sacks cmt on top. CIBP #66: Depth 1.07e-16' with 5 sacks cmt on top. CIBP #67: Depth 5.35e-17' with 5 sacks cmt on top. CIBP #68: Depth 2.67e-17' with 5 sacks cmt on top. CIBP #69: Depth 1.34e-17' with 5 sacks cmt on top. CIBP #70: Depth 6.7e-18' with 5 sacks cmt on top. CIBP #71: Depth 3.35e-18' with 5 sacks cmt on top. CIBP #72: Depth 1.67e-18' with 5 sacks cmt on top. CIBP #73: Depth 8.35e-19' with 5 sacks cmt on top. CIBP #74: Depth 4.17e-19' with 5 sacks cmt on top. CIBP #75: Depth 2.09e-19' with 5 sacks cmt on top. CIBP #76: Depth 1.04e-19' with 5 sacks cmt on top. CIBP #77: Depth 5.2e-20' with 5 sacks cmt on top. CIBP #78: Depth 2.6e-20' with 5 sacks cmt on top. CIBP #79: Depth 1.3e-20' with 5 sacks cmt on top. CIBP #80: Depth 6.5e-21' with 5 sacks cmt on top. CIBP #81: Depth 3.25e-21' with 5 sacks cmt on top. CIBP #82: Depth 1.62e-21' with 5 sacks cmt on top. CIBP #83: Depth 8.1e-22' with 5 sacks cmt on top. CIBP #84: Depth 4.05e-22' with 5 sacks cmt on top. CIBP #85: Depth 2.02e-22' with 5 sacks cmt on top. CIBP #86: Depth 1.01e-22' with 5 sacks cmt on top. CIBP #87: Depth 5.05e-23' with 5 sacks cmt on top. CIBP #88: Depth 2.52e-23' with 5 sacks cmt on top. CIBP #89: Depth 1.26e-23' with 5 sacks cmt on top. CIBP #90: Depth 6.3e-24' with 5 sacks cmt on top. CIBP #91: Depth 3.15e-24' with 5 sacks cmt on top. CIBP #92: Depth 1.57e-24' with 5 sacks cmt on top. CIBP #93: Depth 7.85e-25' with 5 sacks cmt on top. CIBP #94: Depth 3.92e-25' with 5 sacks cmt on top. CIBP #95: Depth 1.96e-25' with 5 sacks cmt on top. CIBP #96: Depth 9.8e-26' with 5 sacks cmt on top. CIBP #97: Depth 4.9e-26' with 5 sacks cmt on top. CIBP #98: Depth 2.45e-26' with 5 sacks cmt on top. CIBP #99: Depth 1.22e-26' with 5 sacks cmt on top. CIBP #100: Depth 6.1e-27' with 5 sacks cmt on top. CIBP #101: Depth 3.05e-27' with 5 sacks cmt on top. CIBP #102: Depth 1.52e-27' with 5 sacks cmt on top. CIBP #103: Depth 7.6e-28' with 5 sacks cmt on top. CIBP #104: Depth 3.8e-28' with 5 sacks cmt on top. CIBP #105: Depth 1.9e-28' with 5 sacks cmt on top. CIBP #106: Depth 9.5e-29' with 5 sacks cmt on top. CIBP #107: Depth 4.75e-29' with 5 sacks cmt on top. CIBP #108: Depth 2.37e-29' with 5 sacks cmt on top. CIBP #109: Depth 1.18e-29' with 5 sacks cmt on top. CIBP #110: Depth 5.9e-30' with 5 sacks cmt on top. CIBP #111: Depth 2.95e-30' with 5 sacks cmt on top. CIBP #112: Depth 1.47e-30' with 5 sacks cmt on top. CIBP #113: Depth 7.35e-31' with 5 sacks cmt on top. CIBP #114: Depth 3.67e-31' with 5 sacks cmt on top. CIBP #115: Depth 1.84e-31' with 5 sacks cmt on top. CIBP #116: Depth 9.2e-32' with 5 sacks cmt on top. CIBP #117: Depth 4.6e-32' with 5 sacks cmt on top. CIBP #118: Depth 2.3e-32' with 5 sacks cmt on top. CIBP #119: Depth 1.15e-32' with 5 sacks cmt on top. CIBP #120: Depth 5.75e-33' with 5 sacks cmt on top. CIBP #121: Depth 2.87e-33' with 5 sacks cmt on top. CIBP #122: Depth 1.43e-33' with 5 sacks cmt on top. CIBP #123: Depth 7.15e-34' with 5 sacks cmt on top. CIBP #124: Depth 3.57e-34' with 5 sacks cmt on top. CIBP #125: Depth 1.78e-34' with 5 sacks cmt on top. CIBP #126: Depth 8.9e-35' with 5 sacks cmt on top. CIBP #127: Depth 4.45e-35' with 5 sacks cmt on top. CIBP #128: Depth 2.22e-35' with 5 sacks cmt on top. CIBP #129: Depth 1.11e-35' with 5 sacks cmt on top. CIBP #130: Depth 5.55e-36' with 5 sacks cmt on top. CIBP #131: Depth 2.77e-36' with 5 sacks cmt on top. CIBP #132: Depth 1.39e-36' with 5 sacks cmt on top. CIBP #133: Depth 6.95e-37' with 5 sacks cmt on top. CIBP #134: Depth 3.47e-37' with 5 sacks cmt on top. CIBP #135: Depth 1.73e-37' with 5 sacks cmt on top. CIBP #136: Depth 8.65e-38' with 5 sacks cmt on top. CIBP #137: Depth 4.32e-38' with 5 sacks cmt on top. CIBP #138: Depth 2.16e-38' with 5 sacks cmt on top. CIBP #139: Depth 1.08e-38' with 5 sacks cmt on top. CIBP #140: Depth 5.4e-39' with 5 sacks cmt on top. CIBP #141: Depth 2.7e-39' with 5 sacks cmt on top. CIBP #142: Depth 1.35e-39' with 5 sacks cmt on top. CIBP #143: Depth 6.75e-40' with 5 sacks cmt on top. CIBP #144: Depth 3.37e-40' with 5 sacks cmt on top. CIBP #145: Depth 1.69e-40' with 5 sacks cmt on top. CIBP #146: Depth 8.45e-41' with 5 sacks cmt on top. CIBP #147: Depth 4.22e-41' with 5 sacks cmt on top. CIBP #148: Depth 2.11e-41' with 5 sacks cmt on top. CIBP #149: Depth 1.05e-41' with 5 sacks cmt on top. CIBP #150: Depth 5.25e-42' with 5 sacks cmt on top. CIBP #151: Depth 2.62e-42' with 5 sacks cmt on top. CIBP #152: Depth 1.31e-42' with 5 sacks cmt on top. CIBP #153: Depth 6.55e-43' with 5 sacks cmt on top. CIBP #154: Depth 3.27e-43' with 5 sacks cmt on top. CIBP #155: Depth 1.63e-43' with 5 sacks cmt on top. CIBP #156: Depth 8.15e-44' with 5 sacks cmt on top. CIBP #157: Depth 4.07e-44' with 5 sacks cmt on top. CIBP #158: Depth 2.03e-44' with 5 sacks cmt on top. CIBP #159: Depth 1.01e-44' with 5 sacks cmt on top. CIBP #160: Depth 5.05e-45' with 5 sacks cmt on top. CIBP #161: Depth 2.52e-45' with 5 sacks cmt on top. CIBP #162: Depth 1.26e-45' with 5 sacks cmt on top. CIBP #163: Depth 6.3e-46' with 5 sacks cmt on top. CIBP #164: Depth 3.15e-46' with 5 sacks cmt on top. CIBP #165: Depth 1.57e-46' with 5 sacks cmt on top. CIBP #166: Depth 7.85e-47' with 5 sacks cmt on top. CIBP #167: Depth 3.92e-47' with 5 sacks cmt on top. CIBP #168: Depth 1.96e-47' with 5 sacks cmt on top. CIBP #169: Depth 9.8e-48' with 5 sacks cmt on top. CIBP #170: Depth 4.9e-48' with 5 sacks cmt on top. CIBP #171: Depth 2.45e-48' with 5 sacks cmt on top. CIBP #172: Depth 1.22e-48' with 5 sacks cmt on top. CIBP #173: Depth 6.1e-49' with 5 sacks cmt on top. CIBP #174: Depth 3.05e-49' with 5 sacks cmt on top. CIBP #175: Depth 1.52e-49' with 5 sacks cmt on top. CIBP #176: Depth 7.6e-50' with 5 sacks cmt on top. CIBP #177: Depth 3.8e-50' with 5 sacks cmt on top. CIBP #178: Depth 1.9e-50' with 5 sacks cmt on top. CIBP #179: Depth 9.5e-51' with 5 sacks cmt on top. CIBP #180: Depth 4.75e-51' with 5 sacks cmt on top. CIBP #181: Depth 2.37e-51' with 5 sacks cmt on top. CIBP #182: Depth 1.18e-51' with 5 sacks cmt on top. CIBP #183: Depth 5.9e-52' with 5 sacks cmt on top. CIBP #184: Depth 2.95e-52' with 5 sacks cmt on top. CIBP #185: Depth 1.47e-52' with 5 sacks cmt on top. CIBP #186: Depth 7.35e-53' with 5 sacks cmt on top. CIBP #187: Depth 3.67e-53' with 5 sacks cmt on top. CIBP #188: Depth 1.84e-53' with 5 sacks cmt on top. CIBP #189: Depth 9.2e-54' with 5 sacks cmt on top. CIBP #190: Depth 4.6e-54' with 5 sacks cmt on top. CIBP #191: Depth 2.3e-54' with 5 sacks cmt on top. CIBP #192: Depth 1.15e-54' with 5 sacks cmt on top. CIBP #193: Depth 5.75e-55' with 5 sacks cmt on top. CIBP #194: Depth 2.87e-55' with 5 sacks cmt on top. CIBP #195: Depth 1.43e-55' with 5 sacks cmt on top. CIBP #196: Depth 7.15e-56' with 5 sacks cmt on top. CIBP #197: Depth 3.57e-56' with 5 sacks cmt on top. CIBP #198: Depth 1.78e-56' with 5 sacks cmt on top. CIBP #199: Depth 8.9e-57' with 5 sacks cmt on top. CIBP #200: Depth 4.45e-57' with 5 sacks cmt on top. CIBP #201: Depth 2.22e-57' with 5 sacks cmt on top. CIBP #202: Depth 1.11e-57' with 5 sacks cmt on top. CIBP #203: Depth 5.55e-58' with 5 sacks cmt on top. CIBP #204: Depth 2.77e-58' with 5 sacks cmt on top. CIBP #205: Depth 1.39e-58' with 5 sacks cmt on top. CIBP #206: Depth 6.95e-59' with 5 sacks cmt on top. CIBP #207: Depth 3.47e-59' with 5 sacks cmt on top. CIBP #208: Depth 1.73e-59' with 5 sacks cmt on top. CIBP #209: Depth 8.65e-60' with 5 sacks cmt on top. CIBP #210: Depth 4.32e-60' with 5 sacks cmt on top. CIBP #211: Depth 2.16e-60' with 5 sacks cmt on top. CIBP #212: Depth 1.08e-60' with 5 sacks cmt on top. CIBP #213: Depth 5.4e-61' with 5 sacks cmt on top. CIBP #214: Depth 2.7e-61' with 5 sacks cmt on top. CIBP #215: Depth 1.35e-61' with 5 sacks cmt on top. CIBP #216: Depth 6.75e-62' with 5 sacks cmt on top. CIBP #217: Depth 3.37e-62' with 5 sacks cmt on top. CIBP #218: Depth 1.69e-62' with 5 sacks cmt on top. CIBP #219: Depth 8.45e-63' with 5 sacks cmt on top. CIBP #220: Depth 4.22e-63' with 5 sacks cmt on top. CIBP #221: Depth 2.11e-63' with 5 sacks cmt on top. CIBP #222: Depth 1.05e-63' with 5 sacks cmt on top. CIBP #223: Depth 5.25e-64' with 5 sacks cmt on top. CIBP #224: Depth 2.62e-64' with 5 sacks cmt on top. CIBP #225: Depth 1.31e-64' with 5 sacks cmt on top. CIBP #226: Depth 6.55e-65' with 5 sacks cmt on top. CIBP #227: Depth 3.27e-65' with 5 sacks cmt on top. CIBP #228: Depth 1.63e-65' with 5 sacks cmt on top. CIBP #229: Depth 8.15e-66' with 5 sacks cmt on top. CIBP #230: Depth 4.07e-66' with 5 sacks cmt on top. CIBP #231: Depth 2.03e-66' with 5 sacks cmt on top. CIBP #232: Depth 1.01e-66' with 5 sacks cmt on top. CIBP #233: Depth 5.05e-67' with 5 sacks cmt on top. CIBP #234: Depth 2.52e-67' with 5 sacks cmt on top. CIBP #235: Depth 1.26e-67' with 5 sacks cmt on top. CIBP #236: Depth 6.3e-68' with 5 sacks cmt on top. CIBP #237: Depth 3.15e-68' with 5 sacks cmt on top. CIBP #238: Depth 1.57e-68' with 5 sacks cmt on top. CIBP #239: Depth 7.85e-69' with 5 sacks cmt on top. CIBP #240: Depth 3.92e-69' with 5 sacks cmt on top. CIBP #241: Depth 1.96e-69' with 5 sacks cmt on top. CIBP #242: Depth 9.8e-70' with 5 sacks cmt on top. CIBP #243: Depth 4.9e-70' with 5 sacks cmt on top. CIBP #244: Depth 2.45e-70' with 5 sacks cmt on top. CIBP #245: Depth 1.22e-70' with 5 sacks cmt on top. CIBP #246: Depth 6.1e-71' with 5 sacks cmt on top. CIBP #247: Depth 3.05e-71' with 5 sacks cmt on top. CIBP #248: Depth 1.52e-71' with 5 sacks cmt on top. CIBP #249: Depth 7.6e-72' with 5 sacks cmt on top. CIBP #250: Depth 3.8e-72' with 5 sacks cmt on top. CIBP #251: Depth 1.9e-72' with 5 sacks cmt on top. CIBP #252: Depth 9.5e-73' with 5 sacks cmt on top. CIBP #253: Depth 4.75e-73' with 5 sacks cmt on top. CIBP #254: Depth 2.37e-73' with 5 sacks cmt on top. CIBP #255: Depth 1.18e-73' with 5 sacks cmt on top. CIBP #256: Depth 5.9e-74' with 5 sacks cmt on top. CIBP #257: Depth 2.95e-74' with 5 sacks cmt on top. CIBP #258: Depth 1.47e-74' with 5 sacks cmt on top. CIBP #259: Depth 7.35e-75' with 5 sacks cmt on top. CIBP #260: Depth 3.67e-75' with 5 sacks cmt on top. CIBP #261: Depth 1.84e-75' with 5 sacks cmt on top. CIBP #262: Depth 9.2e-76' with 5 sacks cmt on top. CIBP #263: Depth 4.6e-76' with 5 sacks cmt on top. CIBP #264: Depth 2.3e-76' with 5 sacks cmt on top. CIBP #265: Depth 1.15e-76' with 5 sacks cmt on top. CIBP #266: Depth 5.75e-77' with 5 sacks cmt on top. CIBP #267: Depth 2.87e-77' with 5 sacks cmt on top. CIBP #268: Depth 1.43e-77' with 5 sacks cmt on top. CIBP #269: Depth 7.15e-78' with 5 sacks cmt on top. CIBP #270: Depth 3.57e-78' with 5 sacks cmt on top. CIBP #271: Depth 1.78e-78' with 5 sacks cmt on top. CIBP #272: Depth 8.9e-79' with 5 sacks cmt on top. CIBP #273: Depth 4.45e-79' with 5 sacks cmt on top. CIBP #274: Depth 2.22e-79' with 5 sacks cmt on top. CIBP #275: Depth 1.11e-79' with 5 sacks cmt on top. CIBP #276: Depth 5.55e-80' with 5 sacks cmt on top. CIBP #277: Depth 2.77e-80' with 5 sacks cmt on top. CIBP #278: Depth 1.39e-80' with 5 sacks cmt on top. CIBP #279: Depth 6.95e-81' with 5 sacks cmt on top. CIBP #280: Depth 3.47e-81' with 5 sacks cmt on top. CIBP #281: Depth 1.73e-81' with 5 sacks cmt on top. CIBP #282: Depth 8.65e-82' with 5 sacks cmt on top. CIBP #283: Depth 4.32e-82' with 5 sacks cmt on top. CIBP #284: Depth 2.16e-82' with 5 sacks cmt on top. CIBP #285: Depth 1.08e-82' with 5 sacks cmt on top. CIBP #286: Depth 5.4e-83' with 5 sacks cmt on top. CIBP #287: Depth 2.7e-83' with 5 sacks cmt on top. CIBP #288: Depth 1.35e-83' with 5 sacks cmt on top. CIBP #289: Depth 6.75e-84' with 5 sacks cmt on top. CIBP #290: Depth 3.37e-84' with 5 sacks cmt on top. CIBP #291: Depth 1.69e-84' with 5 sacks cmt on top. CIBP #292: Depth 8.45e-85' with 5 sacks cmt on top. CIBP #293: Depth 4.22e-85' with 5 sacks cmt on top. CIBP #294: Depth 2.11e-85' with 5 sacks cmt on top. CIBP #295: Depth 1.05e-85' with 5 sacks cmt on top. CIBP #296: Depth 5.25e-86' with 5 sacks cmt on top. CIBP #297: Depth 2.62e-86' with 5 sacks cmt on top. CIBP #298: Depth 1.31e-86' with 5 sacks cmt on top. CIBP #299: Depth 6.55e-87' with 5 sacks cmt on top. CIBP #300: Depth 3.27e-87' with 5 sacks cmt on top. CIBP #301: Depth 1.63e-87' with 5 sacks cmt on top. CIBP #302: Depth 8.15e-88' with 5 sacks cmt on top. CIBP #303: Depth 4.07e-88' with 5 sacks cmt on top. CIBP #304: Depth 2.03e-88' with 5 sacks cmt on top. CIBP #305: Depth 1.01e-88' with 5 sacks cmt on top. CIBP #306: Depth 5.05e-89' with 5 sacks cmt on top. CIBP #307: Depth 2.52e-89' with 5 sacks cmt on top. CIBP #308: Depth 1.26e-89' with 5 sacks cmt on top. CIBP #309: Depth 6.3e-90' with 5 sacks cmt on top. CIBP #310: Depth 3.15e-90' with 5 sacks cmt on top. CIBP #311: Depth 1.57e-90' with 5 sacks cmt on top. CIBP #312: Depth 7.85e-91' with 5 sacks cmt on top. CIBP #313: Depth 3.92e-91' with 5 sacks cmt on top. CIBP #314: Depth 1.96e-91' with 5 sacks cmt on top. CIBP #315: Depth 9.8e-92' with 5 sacks cmt on top. CIBP #316: Depth 4.9e-92' with 5 sacks cmt on top. CIBP #317: Depth 2.45e-92' with 5 sacks cmt on top. CIBP #318: Depth 1.22e-92' with 5 sacks cmt on top. CIBP #319: Depth 6.1e-93' with 5 sacks cmt on top. CIBP #320: Depth 3.05e-93' with 5 sacks cmt on top. CIBP #321: Depth 1.52e-93' with 5 sacks cmt on top. CIBP #322: Depth 7.6e-94' with 5 sacks cmt on top. CIBP #323: Depth 3.8e-94' with 5 sacks cmt on top. CIBP #324: Depth 1.9e-94' with 5 sacks cmt on top. CIBP #325: Depth 9.5e-95' with 5 sacks cmt on top. CIBP #326: Depth 4.75e-95' with 5 sacks cmt on top. CIBP #327: Depth 2.37e-95' with 5 sacks cmt on top. CIBP #328: Depth 1.18e-95' with 5 sacks cmt on top. CIBP #329: Depth 5.9e-96' with 5 sacks cmt on top. CIBP #330: Depth 2.95e-96' with 5 sacks cmt on top. CIBP #331: Depth 1.47e-96' with 5 sacks cmt on top. CIBP #332: Depth 7.35e-97' with 5 sacks cmt on top. CIBP #333: Depth 3.67e-97' with 5 sacks cmt on top. CIBP #334: Depth 1.84e-97' with 5 sacks cmt on top. CIBP #335: Depth 9.2e-98' with 5 sacks cmt on top. CIBP #336: Depth 4.6e-98' with 5 sacks cmt on top. CIBP #337: Depth 2.3e-98' with 5 sacks cmt on top. CIBP #338: Depth 1.15e-98' with 5 sacks cmt on top. CIBP #339: Depth 5.75e-99' with 5 sacks cmt on top. CIBP #340: Depth 2.87e-99' with 5 sacks cmt on top. CIBP #341: Depth 1.43e-99' with

RECEIVED

AUG 09 2010

COGCC/Rifle Office

RECOMMENDED PROCEDURE

Notify BLM, COGCC and any other relevant regulatory representative at least 48 hrs. prior to plugging operations. Confirm all permits and approvals have been obtained and are on location prior to beginning well work.

1. MIRU WO unit
2. Kill well, set 2-way check. ND tree. NU Class III BOPs (1000 psi < MASIP < 3000 psi) and test per ExxonMobil requirements.
 - i. Kill fluid is produced water
 - ii. 7 1/16", 3,000psi WP, Class III BOPs
 - a. Pipe rams for 2-3/8" tubing
 - b. Spool
 - c. Blind rams
 - iii. Low pressure test: 200-300 psi for 5 minutes
 - iv. High pressure test: 3,000 psi for 10 minutes
3. Release Arrowset 1-X packer (see attached sheet) and POOH existing 2-3/8" tubing to surface and LD any damaged/corroded joints.
4. RU E-Line and lubricator. RIH with drift gauge ring, junk basket, and sinker bar to cement plug @5665'.

Note: If it is not possible for the gauge ring assembly to reach PBTD, this should be communicated by the wireline crew to the wellwork supervisor before proceeding with the logging work. The wellwork supervisor should then communicate this to the SSE to discuss options for identifying and removing any wellbore obstructions.

5. POOH. RIH with Gyro tool to plug. Tag bottom and record depth. For the gyro tool, make stops every 200 ft from PBTD. Log data from TD to surface.
6. PU CIBP on E-line. RIH and set plug at 5,650'. POOH
7. PU dump bailer with E-line, dump minimum 35ft of approved plug cement/ 5 cu. ft on top of CIBP @5650'. POOH with E-line.
8. PU CIBP on E-line. RIH and set plug at 3,138'. POOH
9. Close BOPs and perform official pressure test on production casing to 300psi and monitor for 15 minutes. Record results. If test unsuccessful, contact SSE. If test successful, RIH with E-Line dump bailer and dump minimum 35ft of approved plug cement/ 5 cu. ft on top of CIBP @3,138'. POOH with E-line. SDFN,WOC
10. RIH E-line tag TOC and record. POOH and PU 1' wireline deployed perforating gun with 2spf, 180° phasing, BH charges for the 5-1/2" 15.5# casing. Perforate casing at 915'. Use perforating charges that produce the largest diameter hole. POOH, LD spent perforating gun.

PCU-A T36-30G P&A

RECEIVED

AUG 09 2010

COGCC/Rifle Office

11. Close BOPs and attempt to establish circulation with inhibited water up the 5-1/2" x 9-5/8" annulus. Circulate 5 1/2" x 9 5/8" annulus clean. If unable to circulate, contact SSE. If circulation established, RD and release E-line.
12. PU retainer on 2 3/8" WS, RIH and set at 900'. Establish circulation rates down WS and up 5 1/2" x 9 5/8" at 1/2 and 1 Bbl/min. RU cementers. Open 5 1/2" x 9 5/8" annular valves and pump 220 sxs of cement down the WS and up the 5 1/2" x 9 5/8" annulus until cement returns to surface. Close annular valves. Sting out of retainer and open production casing valves. Pump 102 sxs on top of retainer. POOH with WS. Top off as necessary, but bring cement levels in all strings to surface. WOC overnight.
13. ND BOPs. Prepare well for removal of all casing at the base of the cellar. Cut-off casing and tubing head 4' below ground level. Remove any excess cement necessary to attach marker. Attach regulation marker plate with weep hole. Marker must have the following information permanently placed on marker head:
 - i. Operator Name
 - ii. Federal Lease Serial number
 - iii. Well number
 - iv. Location by 1/4 1/4, Section, Township and range, or other acceptable surveyed description
14. The cellar shall be filled and surface restored in accordance with the COGCC, BLM, and any other relevant regulatory agency.
15. RDMO workover rig. Clean and clear location, hand site off to operations for reclamation.

PCU A T36-30G P&A

RECEIVED

AUG 09 2010

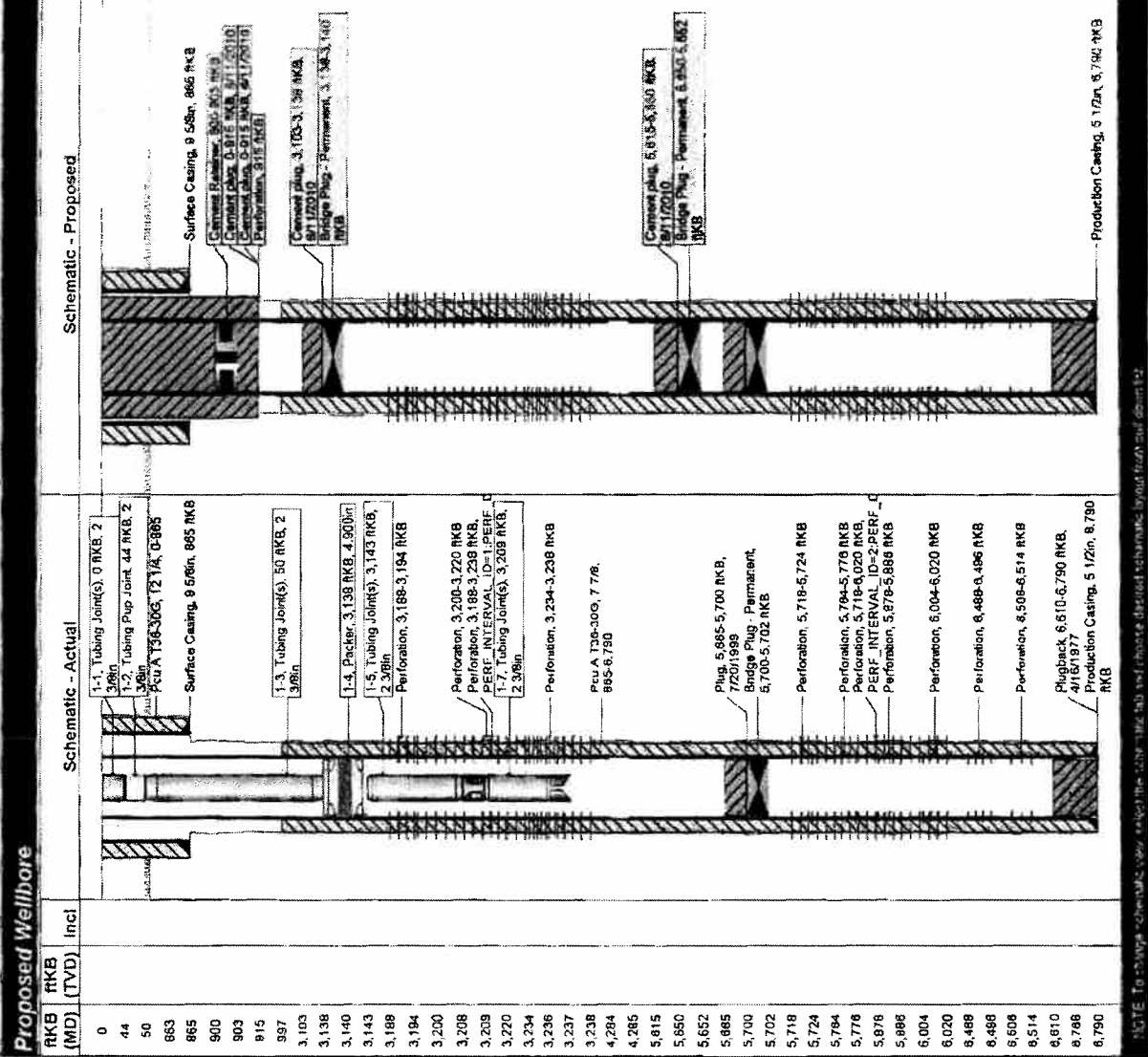
COGCC/BiLife Office

PROPOSED WELLBORE SCHEMATIC

Current & Proposed Schematics
Well: PCU A T36-30g
Field: Piceance Creek Field

ExxonMobil

Well Header				
Lessee	County/District	Leasehold By	Leasehold Date	Leasehold Date
Piceance Creek - Primary A	Rio Blanco	Leasehold	Leasehold	Leasehold
Surface Legal Location	Land Survey System	Well Identifier	Well Identifier	Well Identifier
		0510307959	0510307959	0510307959
Original KB Elevation (ft)	KB-Ground Distance (ft)	Ground Elevation (ft)	Well Spud Date/Time	Well Spud Date/Time
7,833.00	200.00	7,433.00	7/15/1999	7/15/1999



NOTE: To view schematic view, select the schematic tab and reports desired schematic layout from the bottom bar.

PCU A T36-30G P&A