

# ENSIGN

## Directional

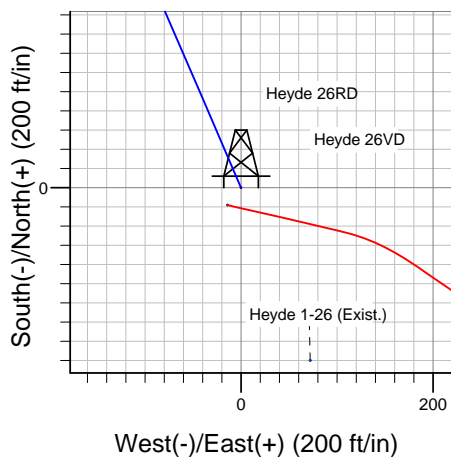
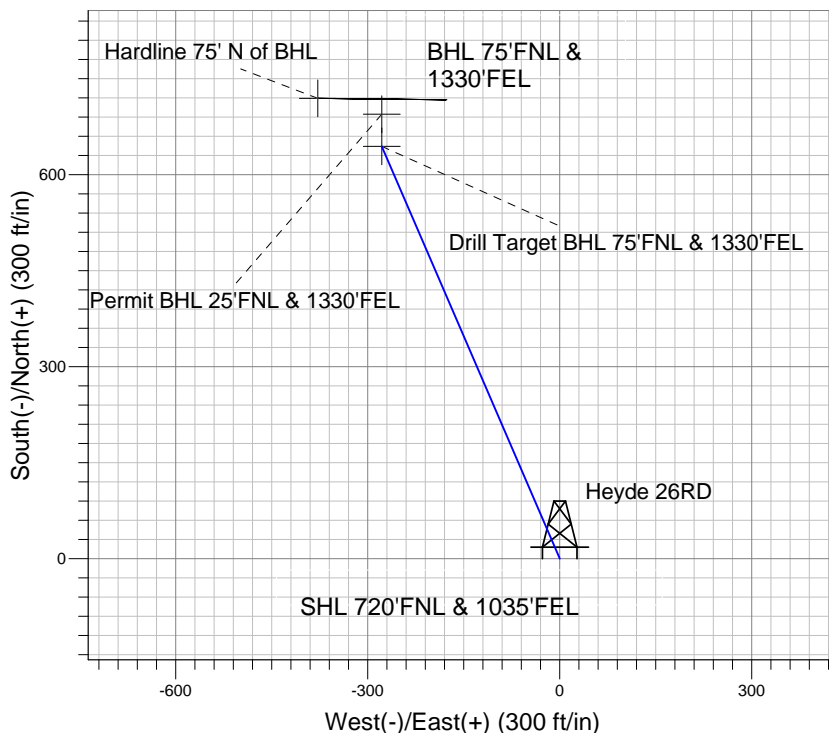
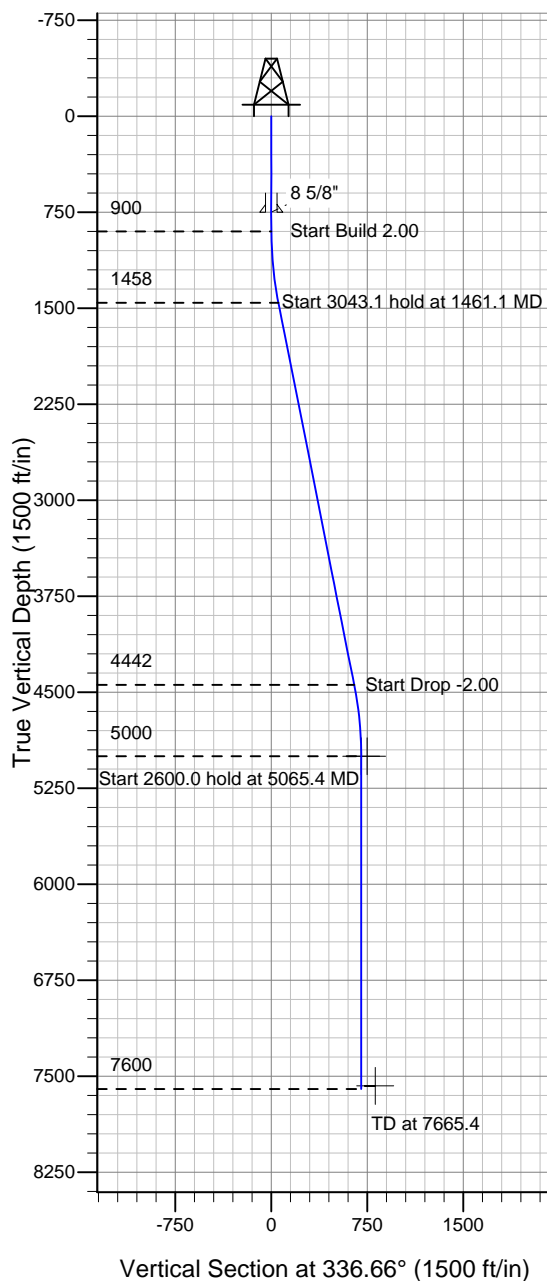
Well Name: **Heyde 26RD**

Surface Location: Heyde 26RD Pad Sec.26-T3N-R64W  
North American Datum 1983 , US State Plane 1983 Colorado Northern Zone  
Ground Elevation: 4815.0

+N/-S	+E/-W	Northing	Easting	Latitude	Longitude	Slot
0.0	0.0	1317842.29	3275763.66	40° 12' 5.976 N	104° 30' 45.828 W	

Original Well ElevWELL @ 4828.0ft (Original Well Elev)

### PETROLEUM DEVELOPMENT CORP Weld County CO



Heyde 26RD  
Plan #1 (7-22-10)  
15:52, July 23 2010



Azimuths to True North  
Magnetic North: 8.83°  
Magnetic Field  
Strength: 53149.5snT  
Dip Angle: 66.96°  
Date: 7/22/2010  
Model: IGRF2010

#### WELLBORE TARGET DETAILS (LAT/LONG)

Name	TVD	+N/-S	+E/-W	Latitude	Longitude	Shape
Drill Target BHL 75'FNL & 1330'FEL	5000.0	644.4	-278.0	40° 12' 12.344 N	104° 30' 49.411 W	Point
Permit BHL 25'FNL & 1330'FEL	5000.0	694.4	-278.0	40° 12' 12.838 N	104° 30' 49.411 W	Point
Hardline 75' N of BHL	7575.0	719.4	-378.0	40° 12' 13.085 N	104° 30' 50.700 W	Polygon

#### SECTION DETAILS

Sec	MD	Inc	Azi	TVD	+N/-S	+E/-W	DLeg	TFace	VSec	Target
1	0.0	0.00	0.00	0.0	0.0	0.0	0.00	0.00	0.0	
2	900.0	0.00	0.00	900.0	0.0	0.0	0.00	0.00	0.0	
3	1461.1	11.22	336.66	1457.6	50.3	-21.7	2.00	336.66	54.8	
4	4450.4	11.22	336.66	4442.4	594.1	-256.3	0.00	0.00	647.0	
5	5065.4	0.00	0.00	5000.0	644.4	-278.0	2.00	180.00	701.8	Drill Target BHL 75'FNL & 1330'FEL
6	7665.4	0.00	0.00	7600.0	644.4	-278.0	0.00	0.00	701.8	