

# Well Location Plat

## McLin A19

Section 12, Township 6 South, Range 92 West

### Surface: McLin A19

908' FSL

2185' FWL

Gnd El= 5607.8

Pad El= 5606.0

**NAD83**

Lat: 39.536878779°N

Long: 107.617434544°W

**NAD27**

Lat: 39.536898177°N

Long: 107.616821004°W

UTM 13 NORTH

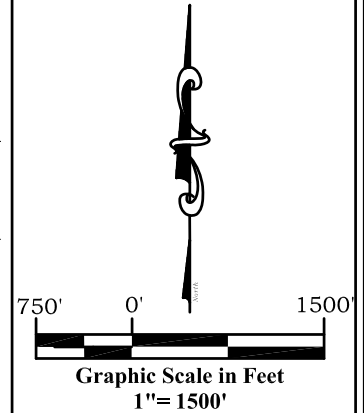
**NAD 1983**

NORTHING

14368833.803

EASTING

902424.507



### Bottom Hole: McLin A19

469' FNL

1741' FEL

**NAD83**

Lat: 39.533140606°N

Long: 107.612650916°W

**NAD27**

Lat: 39.5331556°N

Long: 107.6120376°W

### Legend

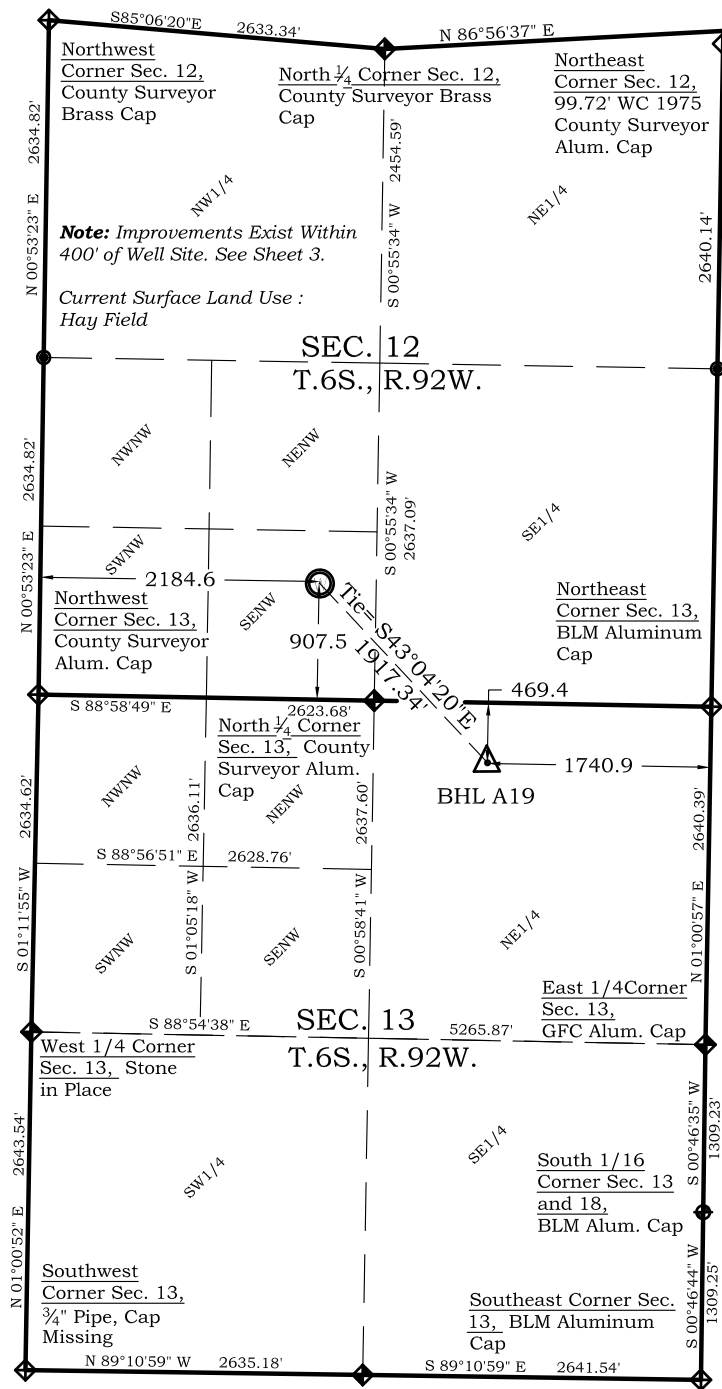
- ◈ - Field Surveyed Section Corner
- ◈ - Field Surveyed Quarter Corner
- ⊙ - Calculated Section Corner Location
- ⊙ - Field Surveyed 1/6 Corner

Prepared For Antero Resources

Proposed McLin A19 Well Situate in The SE1/4SW1/4 Section 12, Township 6 South, Range 92 West of the 6th. Principal Meridian, County of Garfield, State of Colorado

### Notes:

1. LATITUDE AND LONGITUDE COORDINATES ARE DIFFERENTIALLY CORRECTED AND BASED ON PUBLISHED NGS CONTROL STATION "WDP-5". SYSTEM: UTM ZONE: 13 NORTH DATUM: NAD 1983 (CONUS)
2. ELEVATIONS ARE BASED ON NAVD OF 1983.
3. ALL BOTTOM AND TOP HOLE LOCATIONS ARE MEASURED 90 DEGREES FROM SECTION LINE.
4. USGS QUADRANGLE MAP "SILT".
5. CURRENT SURFACE LAND USE: HAY FIELD.
6. PDOP AT THE TIME OF LOCATION OF SURFACE WELL = 2.4



### SURVEYOR'S CERTIFICATE

I, SCOTT E. AIBNER, A REGISTERED LAND SURVEYOR, LICENSED UNDER THE LAWS OF THE STATE OF COLORADO DO HEREBY CERTIFY THAT THE SURVEY SHOWN HEREON WAS PREPARED BY RIVER VALLEY SURVEY, INC., FOR ANTERO RESOURCES, BY ME OR UNDER MY DIRECT SUPERVISION AND THAT THIS PLAT IS A TRUE REPRESENTATION THEREOF.

31143

SCOTT E. AIBNER, COLORADO REG. NO. 31143



**River Valley Survey, Inc.**  
110 East 3rd. Street, Suite 213  
Rifle, Colorado 81650  
Ph: 970-379-7846

**Project:** McLin A PAD

**Field Date:** 01-19-10

**Date:** 08-06-10

**Scale:** 1" = 1000'

**Sheet:** 1 of 10

**Well Location Plat**  
**Prepared For Antero Resources**

**Situate In:**  
SW1/4 Section 12, T.6S., R.92 W. of the  
6th P.M., Garfield County, Colorado

