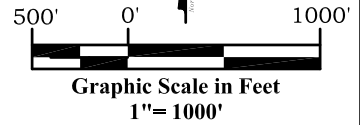
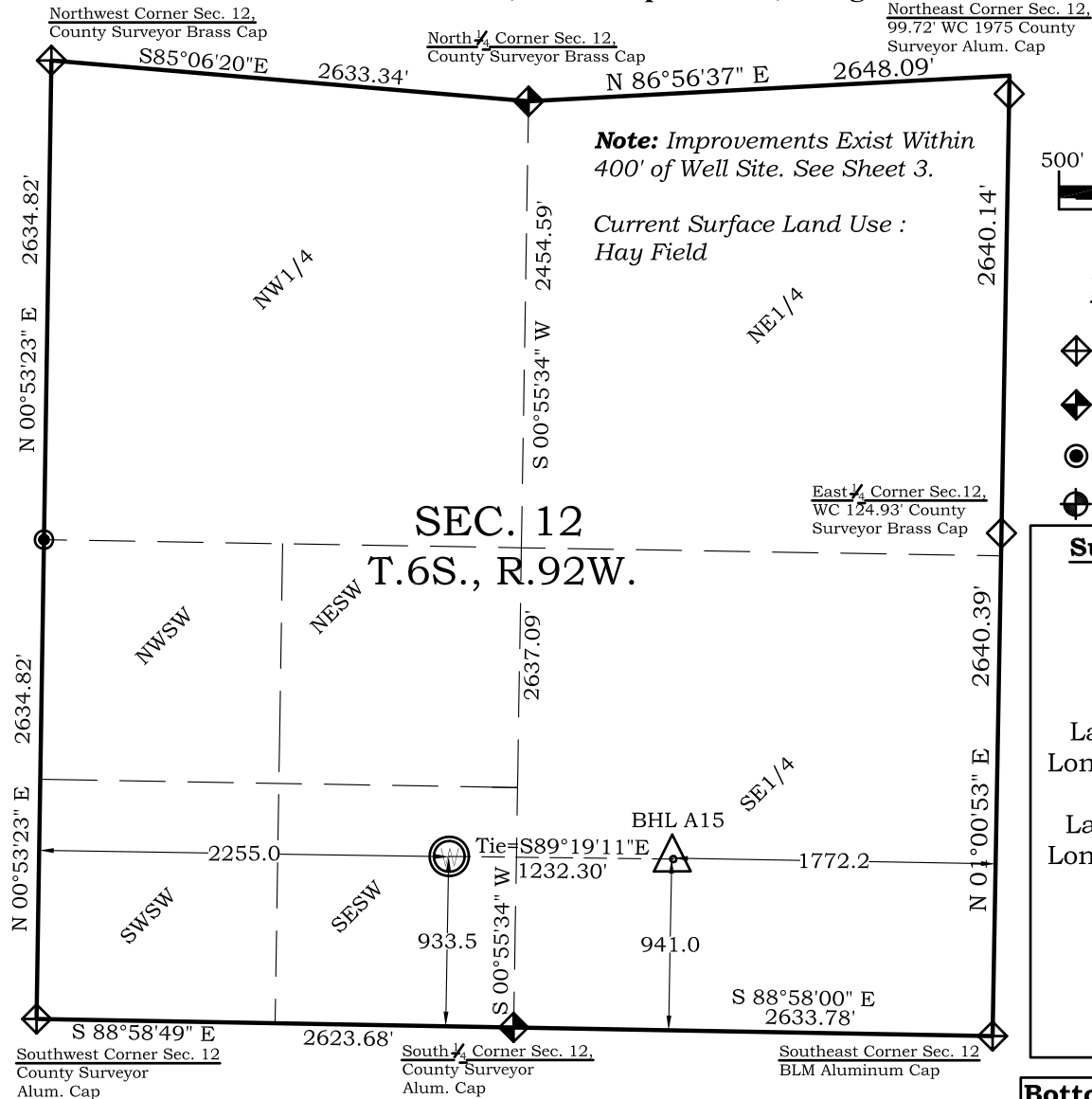


Well Location Plat McLin A15

Section 12, Township 6 South, Range 92 West



Legend

- Field Surveyed Section Corner
- Field Surveyed Quarter Corner
- Calculated Section Corner Location
- Field Surveyed 1/6 Corner

Surface: McLin A15

933' FSL
2255' FWL
Gnd El= 5607.8
Pad El= 5606.0
NAD83
Lat: 39.536952463°N
Long: 107.617186305°W
NAD27
Lat: 39.536971862°N
Long: 107.616572773°W
UTM 13 NORTH
NAD 1983
NORTHING
14368858.601
EASTING
902495.289

Bottom Hole: McLin A15

941' FSL
1772' FEL
NAD83
Lat: 39.537010607°N
Long: 107.612818772°W
NAD27
Lat: 39.5370273°N
Long: 107.6122054°W

Prepared For Antero Resources

Proposed McLin A15 Well Situate in The SE 1/4 SW 1/4 Section 12, Township 6 South, Range 92 West of the 6 th. Principal Meridian, County of Garfield, State of Colorado

SURVEYOR'S CERTIFICATE

I, SCOTT E. AIBNER, A REGISTERED LAND SURVEYOR, LICENSED UNDER THE LAWS OF THE STATE OF COLORADO DO HEREBY CERTIFY THAT THE SURVEY SHOWN HEREON WAS PREPARED BY RIVER VALLEY SURVEY, INC., FOR ANTERO RESOURCES, BY ME OR UNDER MY DIRECT SUPERVISION AND THAT THIS PLAT IS A TRUE REPRESENTATION THEREOF.

31143

BY: SCOTT E. AIBNER, COLORADO REG. NO. 31143

Notes:

- LATITUDE AND LONGITUDE COORDINATES ARE DIFFERENTIALLY CORRECTED AND BASED ON PUBLISHED NGS CONTROL STATION "WDP-5". SYSTEM: UTM ZONE: 13 NORTH DATUM: NAD 1983 (CONUS)
- ELEVATIONS ARE BASED ON NAVD OF 1983.
- ALL BOTTOM AND TOP HOLE LOCATIONS ARE MEASURED 90 DEGREES FROM SECTION LINE.
- USGS QUADRANGLE MAP "SILT".
- CURRENT SURFACE LAND USE: HAY FIELD.
- PDOP AT THE TIME OF LOCATION OF SURFACE WELL = 2.4



River Valley Survey, Inc.
110 East 3rd. Street, Suite 213
Rifle, Colorado 81650
Ph: 970-379-7846

Project: McLin A PAD

Field Date: 01-19-10

Date: 08-06-10

Scale: 1"= 1000'

Sheet: 1 of 10

Well Location Plat
Prepared For Antero Resources

Situate In:
SW 1/4 Section 12, T6S., R.92 W. of the
6th P.M., Garfield County, Colorado

