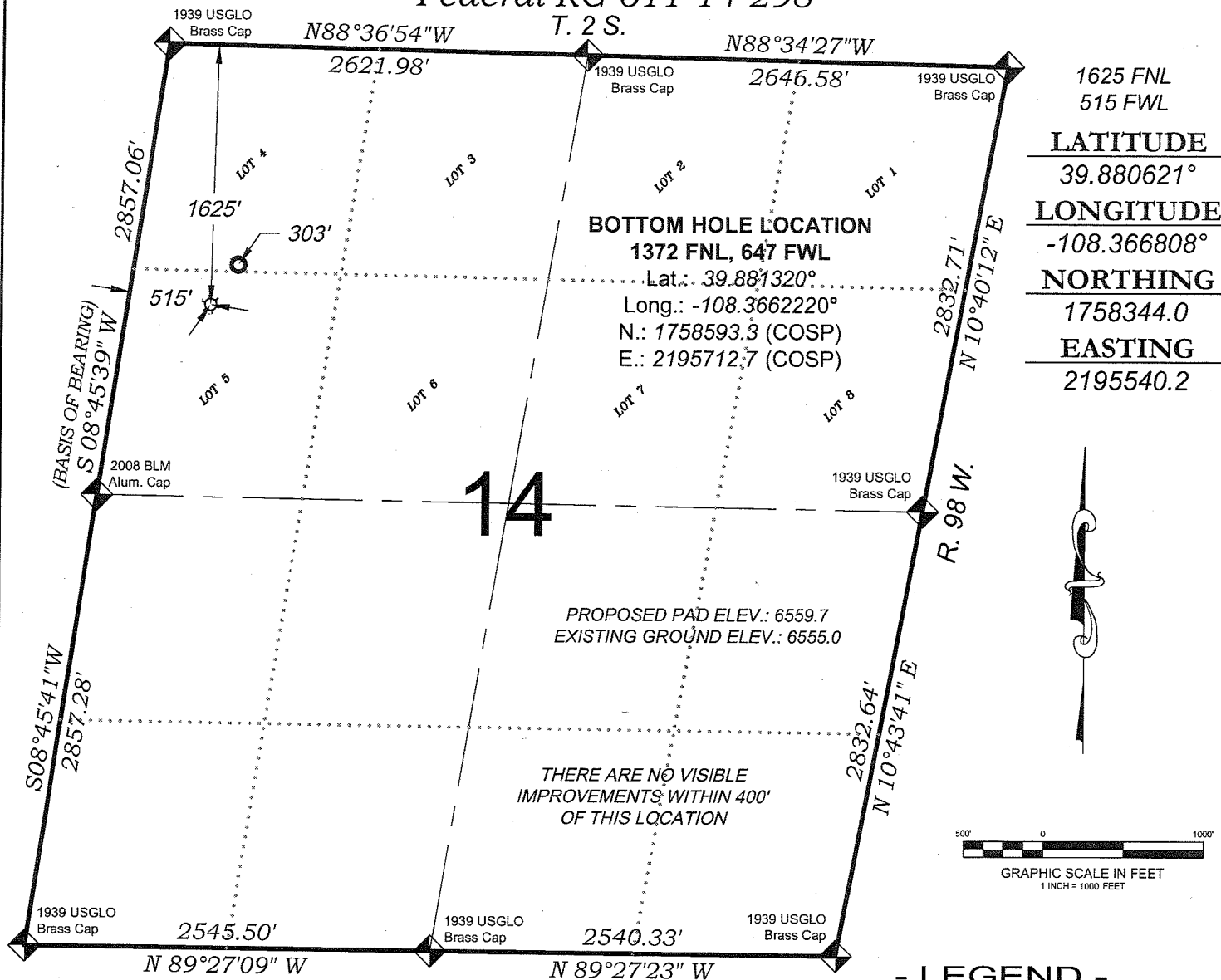


Federal RG 611-14-298



LATITUDE
39.880621°

LONGITUDE
-108.366808°

NORTHING
1758344.0

EASTING
2195540.2

SURVEYORS STATEMENT

I, MICHAEL J. LANGHORNE, A REGISTERED LAND SURVEYOR IN THE STATE OF COLORADO DO HEREBY CERTIFY THAT THE SURVEY SHOWN HEREON WAS PREPARED UNDER MY DIRECT SUPERVISION AND HAS BEEN STAKED ON THE GROUND AS SHOWN ON THE PLAT AND CHECKING THAT THIS MAP IS A TRUE REPRESENTATION THEREOF.

Michael Langhorne

MICHAEL J. LANGHORNE, COLORADO REGISTRATION NO. 36572
FOR AND ON BEHALF OF
BOOKCLIFF SURVEY SERVICES, INC.

REFERENCES

- 1) CORRECTIVE DEPENDENT RESURVEY T. 2 S., R. 98 W., 6th P.M (GLO PLAT)
- 2) U.S.G.S. QUAD: Rock School and Square S Ranch, CO

SURVEY DATE: 2/16/10
MAP DATE: 4/2/10
SCALE: 1" = 1000'
PLAT: 1 of 9
PROJECT: Williams

FIELD LOCATED SECTION MONUMENTS AS DESCRIBED

FIELD SURVEYED WELL LOCATION

CALCULATED BOTTOM HOLE LOCATION

CALCULATED SECTION CORNER LOCATION

NOTES

- 1) ELEVATIONS BASED ON N.A.V.D. 1988 PUBLISHED COORDINATES.
- 2) LATITUDES AND LONGITUDES ARE BASE ON NAD 83, PUBLISHED COORDINATES
- 3) STATE PLANE COORDINATES ARE BASED ON COLORADO CENTRAL ZONE, U.S. SURVEY FEET.
- 4) ELEVATION MASK SET TO 15"
- 5) GPS OPERATOR J. KIRKPATRICK, OBSERVED A PDOP OF 1.5 FOR SURVEY POINT NUMBER 21250.
- 6) SURFACE AND BOTTOM HOLE LOCATIONS ARE MEASURED 90° FROM SECTION LINES.

WELL LOCATION PLAT Prepared for:
Williams Williams Production, RMT

SW1/4 NW1/4, SECTION 14
T. 2 S., R. 98 W. of the 6th. P.M.
Rio BLANCO COUNTY, COLORADO

356 East Third Street
Pueblo, Colorado 81050
Ph: (970) 625-1330
Fax: (970) 625-2773



BOOKCLIFF
Survey Services, Inc.