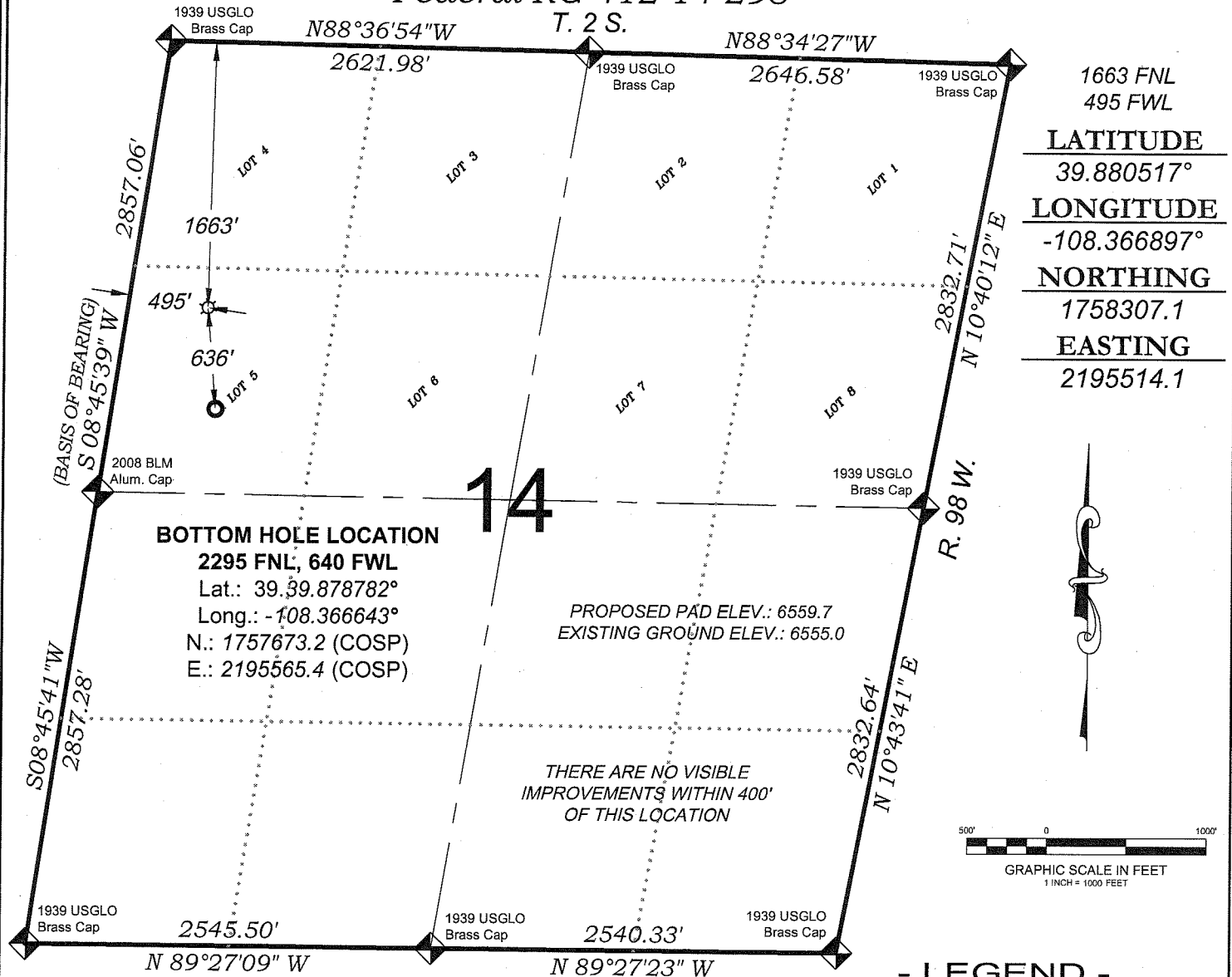


# Federal RG 412-14-298



1663 FNL  
495 FWL

## LATITUDE

39.880517°

## LONGITUDE

-108.366897°

## NORTHING

1758307.1

## EASTING

2195514.1

### BOTTOM HOLE LOCATION

2295 FNL, 640 FWL

Lat.: 39.39.878782°

Long.: -108.366643°

N.: 1757673.2 (COSP)

E.: 2195565.4 (COSP)

PROPOSED PAD ELEV.: 6559.7  
EXISTING GROUND ELEV.: 6555.0

THERE ARE NO VISIBLE  
IMPROVEMENTS WITHIN 400'  
OF THIS LOCATION



## - LEGEND -

FIELD LOCATED SECTION  
MONUMENTS AS DESCRIBED



FIELD SURVEYED  
WELL LOCATION



CALCULATED BOTTOM  
HOLE LOCATION



CALCULATED SECTION  
CORNER LOCATION



### SURVEYORS STATEMENT

I, MICHAEL J. LANGHORNE, A REGISTERED LAND SURVEYOR IN THE STATE OF COLORADO DO HEREBY CERTIFY THAT THE SURVEY SHOWN HEREON WAS PREPARED UNDER MY DIRECT SUPERVISION AND HAS BEEN STAKED ON THE GROUND AS SHOWN ON THE PLAT AND CHECKING THAT THIS MAP IS A TRUE REPRESENTATION THEREOF.

*Michael Langhorne*

MICHAEL J. LANGHORNE, COLORADO REGISTRATION NO. 36572  
FOR AND ON BEHALF OF  
BOOKCLIFF SURVEY SERVICES, INC.

### REFERENCES

- 1) CORRECTIVE DEPENDENT RESURVEY T. 2 S., R. 98 W., 6<sup>th</sup> P.M (GLO PLAT)
- 2) U.S.G.S. QUAD: Rock School and Square S Ranch, CO

SURVEY DATE: 2/16/10

MAP DATE: 4/2/10

SCALE: 1" = 1000'

PLAT: 1 of 9

PROJECT: Williams

### NOTES

- 1) ELEVATIONS BASED ON N.A.V.D. 1988 PUBLISHED COORDINATES.
- 2) LATITUDES AND LONGITUDES ARE BASE ON NAD 83, PUBLISHED COORDINATES
- 3) STATE PLANE COORDINATES ARE BASED ON COLORADO CENTRAL ZONE, U.S. SURVEY FEET.
- 4) ELEVATION MASK SET TO 15°
- 5) GPS OPERATOR J. KIRKPATRICK, OBSERVED A PDOP OF 1.5 FOR SURVEY POINT NUMBER 21250.
- 6) SURFACE AND BOTTOM HOLE LOCATIONS ARE MEASURED 90° FROM SECTION LINES.

**WELL LOCATION PLAT Prepared for:**  
**Williams** Williams Production, RMT

SW1/4 NW1/4, SECTION 14  
T. 2 S., R. 98 W. of the 6<sup>th</sup> P.M.  
Rio BLANCO COUNTY, COLORADO

136 East Third Street  
Pueblo, Colorado 81050  
Ph: (970) 625-1330  
Fax: (970) 625-2773



**BOOKCLIFF**  
Survey Services, Inc.