



## **Bill Barrett Corp.**

Garfield County, Colorado

Kaufman 6 Pad

Kaufman 22D-24-692

Wellbore #1

Plan: plan1 02jun10 smw

## **Standard Planning Report**

03 June, 2010

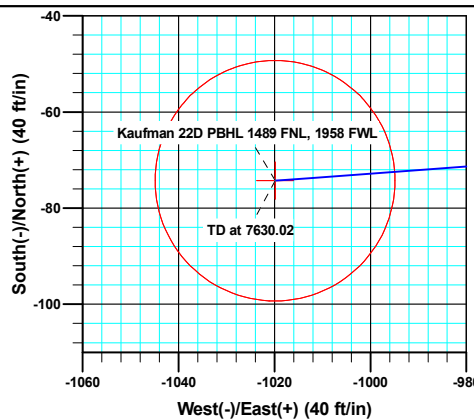
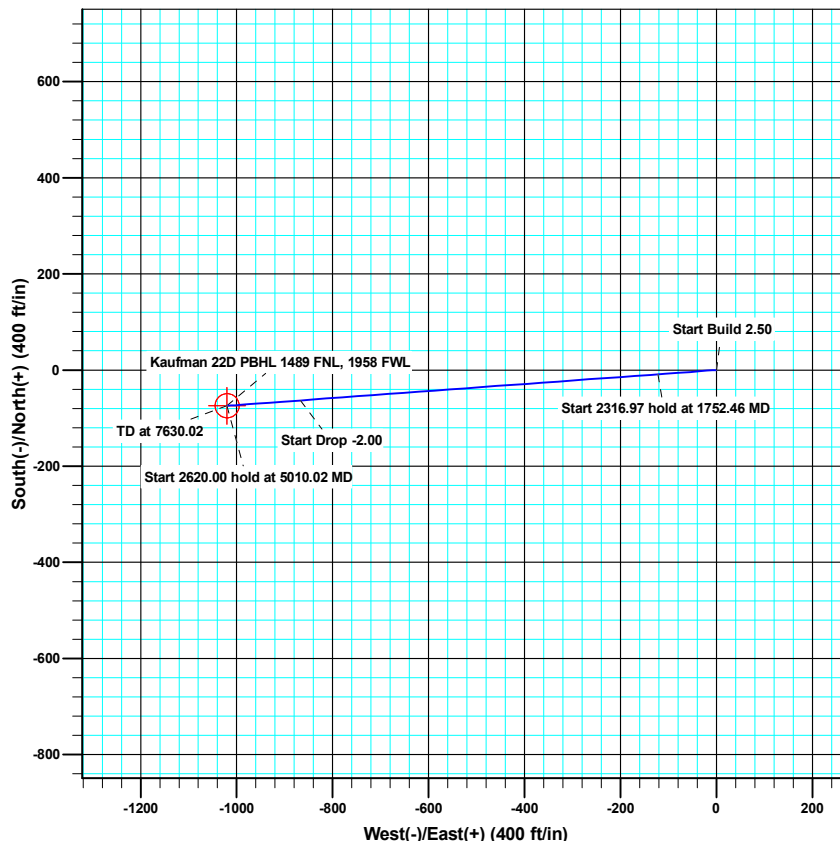
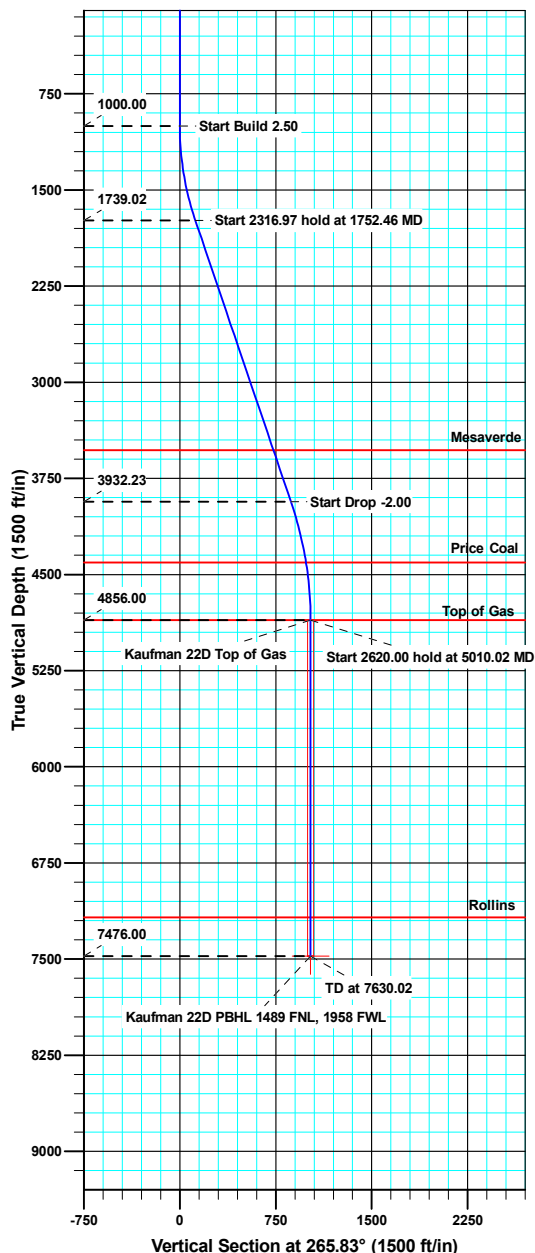




WELL DETAILS: Kaufman 22D-24-692

Ground Level: 5763.00

North American Datum 1983 , US State Plane 1983 , Colorado Central Zone  
 +N/-S +E/-W Northing Easting Latitude Longitude  
 0.00 0.00 1619783.72 2403552.80 39° 30' 57.71 N 107° 36' 51.66 W



Azimuths to True North  
 Magnetic North: 10.29°

Magnetic Field  
 Strength: 52446.1snT  
 Dip Angle: 65.87°  
 Date: 06/02/2010  
 Model: IGRF200510

#### ANNOTATIONS

TVD	MD	Inc	Azi	+N/-S	+E/-W	Vsect	Departure	Annotation
1000.00	1000.00	0.00	0.00	0.00	0.00	0.00	0.00	Start Build 2.50
1739.02	1752.46	18.81	265.83	-8.89	-122.10	122.42	122.42	Start 2316.97 hold at 1752.46 MD
3932.23	4069.44	18.81	265.83	-63.16	-867.25	869.55	869.55	Start Drop -2.00
4856.00	5010.02	0.00	0.00	-74.28	-1019.87	1022.57	1022.57	Start 2620.00 hold at 5010.02 MD
7476.00	7630.02	0.00	0.00	-74.28	-1019.87	1022.57	1022.57	TD at 7630.02



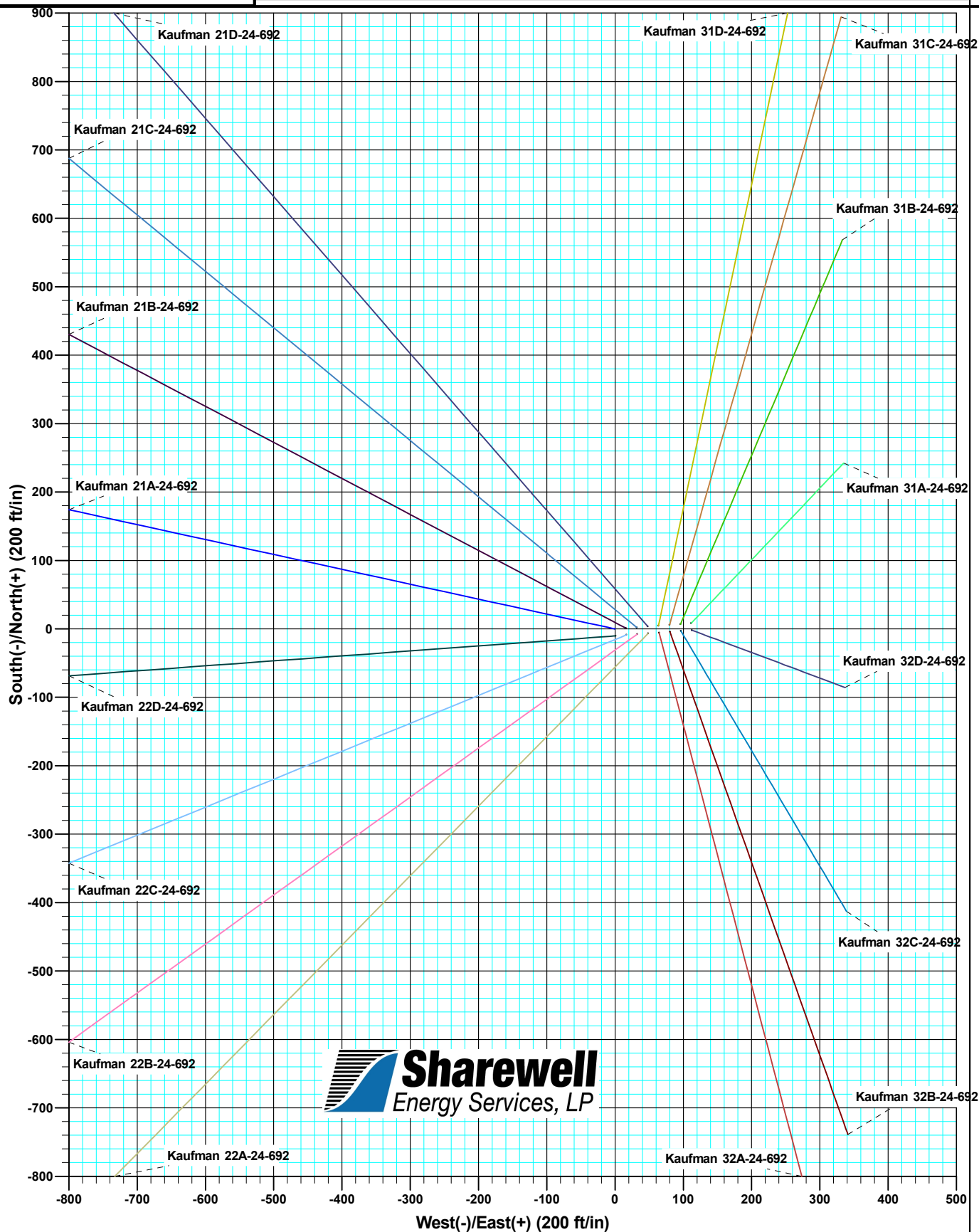


Bill Barrett Corporation

WELL DETAILS: Kaufman 6 Pad

Ground Level: 5763.00

North American Datum 1983	US State Plane 1983	Colorado Central Zone			
+N/-S	+E/-W	North	Easting	Latitude	Longitude
0.00	0.00	1619793.94	2403552.19	39° 30' 57.81 N	107° 36' 51.67 W



 **Sharewell**  
Energy Services, LP

<b>Database:</b>	SWFS01	<b>Local Co-ordinate Reference:</b>	Well Kaufman 22D-24-692
<b>Company:</b>	Bill Barrett Corp.	<b>TVD Reference:</b>	KB @ 5786.00ft
<b>Project:</b>	Garfield County, Colorado	<b>MD Reference:</b>	KB @ 5786.00ft
<b>Site:</b>	Kaufman 6 Pad	<b>North Reference:</b>	True
<b>Well:</b>	Kaufman 22D-24-692	<b>Survey Calculation Method:</b>	Minimum Curvature
<b>Wellbore:</b>	Wellbore #1		
<b>Design:</b>	plan1 02jun10 smw		

<b>Project</b>	Garfield County, Colorado		
<b>Map System:</b>	US State Plane 1983	<b>System Datum:</b>	Mean Sea Level
<b>Geo Datum:</b>	North American Datum 1983		
<b>Map Zone:</b>	Colorado Central Zone		

Site	Kaufman 6 Pad				
Site Position:		Northing:	1,619,793.95 usft	Latitude:	39° 30' 57.81 N
From:	Lat/Long	Easting:	2,403,552.20 usft	Longitude:	107° 36' 51.67 W
Position Uncertainty:	0.00 ft	Slot Radius:	0.00 ft	Grid Convergence:	-1.33

Well	Kaufman 22D-24-692					
Well Position	+N/-S	-10.21 ft	Northing:	1,619,783.72 usft	Latitude:	39° 30' 57.71 N
	+E/-W	0.85 ft	Easting:	2,403,552.81 usft	Longitude:	107° 36' 51.66 W
Position Uncertainty		0.00 ft	Wellhead Elevation:		Ground Level:	5,763.00 ft

<b>Wellbore</b>	Wellbore #1				
<b>Magnetics</b>	<b>Model Name</b>	<b>Sample Date</b>	<b>Declination (°)</b>	<b>Dip Angle (°)</b>	<b>Field Strength (nT)</b>
	IGRF200510	06/02/10	10.29	65.87	52,446

<b>Design</b>	plan1 02jun10 smw			
<b>Audit Notes:</b>				
<b>Version:</b>	<b>Phase:</b>	PROTOTYPE	<b>Tie On Depth:</b>	0.00
<b>Vertical Section:</b>	<b>Depth From (TVD) (ft)</b>	<b>+N/-S (ft)</b>	<b>+E/-W (ft)</b>	<b>Direction (°)</b>
	0.00	0.00	0.00	265.83

<b>Plan Sections</b>										
Measured Depth (ft)	Inclination (°)	Azimuth (°)	Vertical Depth (ft)	+N/-S (ft)	+E/-W (ft)	Dogleg Rate (°/100ft)	Build Rate (°/100ft)	Turn Rate (°/100ft)	TFO (°)	Target
0.00	0.00	0.00	0.00	0.00	0.00	0.00	0.00	0.00	0.00	
1,000.00	0.00	0.00	1,000.00	0.00	0.00	0.00	0.00	0.00	0.00	
1,752.46	18.81	265.83	1,739.02	-8.89	-122.10	2.50	2.50	0.00	265.83	
4,069.44	18.81	265.83	3,932.23	-63.16	-867.25	0.00	0.00	0.00	0.00	
5,010.02	0.00	0.00	4,856.00	-74.28	-1,019.87	2.00	-2.00	0.00	180.00	Kaufman 22D Top of V
7,630.02	0.00	0.00	7,476.00	-74.28	-1,019.87	0.00	0.00	0.00	0.00	Kaufman 22D PBHL 1

<b>Database:</b>	SWFS01	<b>Local Co-ordinate Reference:</b>	Well Kaufman 22D-24-692
<b>Company:</b>	Bill Barrett Corp.	<b>TVD Reference:</b>	KB @ 5786.00ft
<b>Project:</b>	Garfield County, Colorado	<b>MD Reference:</b>	KB @ 5786.00ft
<b>Site:</b>	Kaufman 6 Pad	<b>North Reference:</b>	True
<b>Well:</b>	Kaufman 22D-24-692	<b>Survey Calculation Method:</b>	Minimum Curvature
<b>Wellbore:</b>	Wellbore #1		
<b>Design:</b>	plan1 02jun10 smw		

Planned Survey									
Measured Depth (ft)	Inclination (°)	Azimuth (°)	Vertical Depth (ft)	+N/-S (ft)	+E/-W (ft)	Vertical Section (ft)	Dogleg Rate (°/100ft)	Build Rate (°/100ft)	Turn Rate (°/100ft)
1,000.00	0.00	0.00	1,000.00	0.00	0.00	0.00	0.00	0.00	0.00
<b>Start Build 2.50</b>									
1,100.00	2.50	265.83	1,099.97	-0.16	-2.18	2.18	2.50	2.50	0.00
1,200.00	5.00	265.83	1,199.75	-0.63	-8.70	8.72	2.50	2.50	0.00
1,300.00	7.50	265.83	1,299.14	-1.42	-19.56	19.61	2.50	2.50	0.00
1,400.00	10.00	265.83	1,397.97	-2.53	-34.73	34.82	2.50	2.50	0.00
1,500.00	12.50	265.83	1,496.04	-3.95	-54.18	54.33	2.50	2.50	0.00
1,600.00	15.00	265.83	1,593.17	-5.67	-77.89	78.09	2.50	2.50	0.00
1,700.00	17.50	265.83	1,689.17	-7.70	-105.79	106.07	2.50	2.50	0.00
1,752.46	18.81	265.83	1,739.02	-8.89	-122.10	122.42	2.50	2.50	0.00
<b>Start 2316.97 hold at 1752.46 MD</b>									
1,800.00	18.81	265.83	1,784.01	-10.01	-137.38	137.75	0.00	0.00	0.00
1,900.00	18.81	265.83	1,878.67	-12.35	-169.55	169.99	0.00	0.00	0.00
2,000.00	18.81	265.83	1,973.33	-14.69	-201.71	202.24	0.00	0.00	0.00
2,100.00	18.81	265.83	2,067.99	-17.03	-233.87	234.49	0.00	0.00	0.00
2,200.00	18.81	265.83	2,162.65	-19.37	-266.03	266.73	0.00	0.00	0.00
2,300.00	18.81	265.83	2,257.31	-21.72	-298.19	298.98	0.00	0.00	0.00
2,400.00	18.81	265.83	2,351.97	-24.06	-330.35	331.22	0.00	0.00	0.00
2,500.00	18.81	265.83	2,446.62	-26.40	-362.51	363.47	0.00	0.00	0.00
2,600.00	18.81	265.83	2,541.28	-28.74	-394.67	395.71	0.00	0.00	0.00
2,700.00	18.81	265.83	2,635.94	-31.09	-426.83	427.96	0.00	0.00	0.00
2,800.00	18.81	265.83	2,730.60	-33.43	-458.99	460.21	0.00	0.00	0.00
2,900.00	18.81	265.83	2,825.26	-35.77	-491.15	492.45	0.00	0.00	0.00
3,000.00	18.81	265.83	2,919.92	-38.11	-523.31	524.70	0.00	0.00	0.00
3,100.00	18.81	265.83	3,014.57	-40.45	-555.47	556.94	0.00	0.00	0.00
3,200.00	18.81	265.83	3,109.23	-42.80	-587.63	589.19	0.00	0.00	0.00
3,300.00	18.81	265.83	3,203.89	-45.14	-619.79	621.43	0.00	0.00	0.00
3,400.00	18.81	265.83	3,298.55	-47.48	-651.95	653.68	0.00	0.00	0.00
3,500.00	18.81	265.83	3,393.21	-49.82	-684.11	685.93	0.00	0.00	0.00
3,600.00	18.81	265.83	3,487.87	-52.17	-716.27	718.17	0.00	0.00	0.00
3,645.57	18.81	265.83	3,531.00	-53.23	-730.93	732.87	0.00	0.00	0.00
<b>Mesaverde</b>									
3,700.00	18.81	265.83	3,582.52	-54.51	-748.44	750.42	0.00	0.00	0.00
3,800.00	18.81	265.83	3,677.18	-56.85	-780.60	782.66	0.00	0.00	0.00
3,900.00	18.81	265.83	3,771.84	-59.19	-812.76	814.91	0.00	0.00	0.00
4,000.00	18.81	265.83	3,866.50	-61.53	-844.92	847.15	0.00	0.00	0.00
4,069.44	18.81	265.83	3,932.23	-63.16	-867.25	869.55	0.00	0.00	0.00
<b>Start Drop -2.00</b>									
4,100.00	18.20	265.83	3,961.21	-63.87	-876.92	879.25	2.00	-2.00	0.00
4,200.00	16.20	265.83	4,056.73	-66.01	-906.41	908.82	2.00	-2.00	0.00
4,300.00	14.20	265.83	4,153.23	-67.92	-932.56	935.03	2.00	-2.00	0.00
4,400.00	12.20	265.83	4,250.58	-69.58	-955.34	957.87	2.00	-2.00	0.00
4,500.00	10.20	265.83	4,348.67	-70.99	-974.71	977.29	2.00	-2.00	0.00
4,558.15	9.04	265.83	4,406.00	-71.69	-984.40	987.01	2.00	-2.00	0.00
<b>Price Coal</b>									
4,600.00	8.20	265.83	4,447.38	-72.15	-990.66	993.28	2.00	-2.00	0.00
4,700.00	6.20	265.83	4,546.59	-73.06	-1,003.16	1,005.81	2.00	-2.00	0.00
4,800.00	4.20	265.83	4,646.17	-73.72	-1,012.20	1,014.88	2.00	-2.00	0.00
4,900.00	2.20	265.83	4,746.01	-74.12	-1,017.76	1,020.46	2.00	-2.00	0.00
5,000.00	0.20	265.83	4,845.98	-74.28	-1,019.85	1,022.55	2.00	-2.00	0.00
5,010.02	0.00	0.00	4,856.00	-74.28	-1,019.87	1,022.57	2.00	-2.00	0.00
<b>Start 2620.00 hold at 5010.02 MD - Top of Gas - Kaufman 22D Top of Gas</b>									
5,100.00	0.00	0.00	4,945.98	-74.28	-1,019.87	1,022.57	0.00	0.00	0.00

<b>Database:</b>	SWFS01	<b>Local Co-ordinate Reference:</b>	Well Kaufman 22D-24-692
<b>Company:</b>	Bill Barrett Corp.	<b>TVD Reference:</b>	KB @ 5786.00ft
<b>Project:</b>	Garfield County, Colorado	<b>MD Reference:</b>	KB @ 5786.00ft
<b>Site:</b>	Kaufman 6 Pad	<b>North Reference:</b>	True
<b>Well:</b>	Kaufman 22D-24-692	<b>Survey Calculation Method:</b>	Minimum Curvature
<b>Wellbore:</b>	Wellbore #1		
<b>Design:</b>	plan1 02jun10 smw		

Planned Survey									
Measured Depth (ft)	Inclination (°)	Azimuth (°)	Vertical Depth (ft)	+N/-S (ft)	+E/-W (ft)	Vertical Section (ft)	Dogleg Rate (°/100ft)	Build Rate (°/100ft)	Turn Rate (°/100ft)
5,200.00	0.00	0.00	5,045.98	-74.28	-1,019.87	1,022.57	0.00	0.00	0.00
5,300.00	0.00	0.00	5,145.98	-74.28	-1,019.87	1,022.57	0.00	0.00	0.00
5,400.00	0.00	0.00	5,245.98	-74.28	-1,019.87	1,022.57	0.00	0.00	0.00
5,500.00	0.00	0.00	5,345.98	-74.28	-1,019.87	1,022.57	0.00	0.00	0.00
5,600.00	0.00	0.00	5,445.98	-74.28	-1,019.87	1,022.57	0.00	0.00	0.00
5,700.00	0.00	0.00	5,545.98	-74.28	-1,019.87	1,022.57	0.00	0.00	0.00
5,800.00	0.00	0.00	5,645.98	-74.28	-1,019.87	1,022.57	0.00	0.00	0.00
5,900.00	0.00	0.00	5,745.98	-74.28	-1,019.87	1,022.57	0.00	0.00	0.00
6,000.00	0.00	0.00	5,845.98	-74.28	-1,019.87	1,022.57	0.00	0.00	0.00
6,100.00	0.00	0.00	5,945.98	-74.28	-1,019.87	1,022.57	0.00	0.00	0.00
6,200.00	0.00	0.00	6,045.98	-74.28	-1,019.87	1,022.57	0.00	0.00	0.00
6,300.00	0.00	0.00	6,145.98	-74.28	-1,019.87	1,022.57	0.00	0.00	0.00
6,400.00	0.00	0.00	6,245.98	-74.28	-1,019.87	1,022.57	0.00	0.00	0.00
6,500.00	0.00	0.00	6,345.98	-74.28	-1,019.87	1,022.57	0.00	0.00	0.00
6,600.00	0.00	0.00	6,445.98	-74.28	-1,019.87	1,022.57	0.00	0.00	0.00
6,700.00	0.00	0.00	6,545.98	-74.28	-1,019.87	1,022.57	0.00	0.00	0.00
6,800.00	0.00	0.00	6,645.98	-74.28	-1,019.87	1,022.57	0.00	0.00	0.00
6,900.00	0.00	0.00	6,745.98	-74.28	-1,019.87	1,022.57	0.00	0.00	0.00
7,000.00	0.00	0.00	6,845.98	-74.28	-1,019.87	1,022.57	0.00	0.00	0.00
7,100.00	0.00	0.00	6,945.98	-74.28	-1,019.87	1,022.57	0.00	0.00	0.00
7,200.00	0.00	0.00	7,045.98	-74.28	-1,019.87	1,022.57	0.00	0.00	0.00
7,300.00	0.00	0.00	7,145.98	-74.28	-1,019.87	1,022.57	0.00	0.00	0.00
7,330.02	0.00	0.00	7,176.00	-74.28	-1,019.87	1,022.57	0.00	0.00	0.00
<b>Rollins</b>									
7,400.00	0.00	0.00	7,245.98	-74.28	-1,019.87	1,022.57	0.00	0.00	0.00
7,500.00	0.00	0.00	7,345.98	-74.28	-1,019.87	1,022.57	0.00	0.00	0.00
7,600.00	0.00	0.00	7,445.98	-74.28	-1,019.87	1,022.57	0.00	0.00	0.00
7,630.02	0.00	0.00	7,476.00	-74.28	-1,019.87	1,022.57	0.00	0.00	0.00
<b>TD at 7630.02 - Kaufman 22D PBHL 1489 FNL, 1958 FWL</b>									

Design Targets									
Target Name	Dip Angle (°)	Dip Dir. (°)	TVD (ft)	+N/-S (ft)	+E/-W (ft)	Northing (usft)	Easting (usft)	Latitude	Longitude
- hit/miss target									
- Shape									
Kaufman 22D Top of Ga	0.00	0.00	4,856.00	-74.28	-1,019.87	1,619,733.20	2,402,531.49	39° 30' 56.97 N	107° 37' 4.68 W
- plan hits target center									
- Circle (radius 25.00)									
Kaufman 22D PBHL 14E	0.00	0.00	7,476.00	-74.28	-1,019.87	1,619,733.20	2,402,531.49	39° 30' 56.97 N	107° 37' 4.68 W
- plan hits target center									
- Point									

Formations						
Measured Depth (ft)	Vertical Depth (ft)	Name	Lithology	Dip (°)	Dip Direction (°)	
3,645.57	3,531.00	Mesaverde		0.00		
4,558.15	4,406.00	Price Coal		0.00		
5,010.02	4,856.00	Top of Gas		0.00		
7,330.02	7,176.00	Rollins		0.00		

<b>Database:</b>	SWFS01	<b>Local Co-ordinate Reference:</b>	Well Kaufman 22D-24-692
<b>Company:</b>	Bill Barrett Corp.	<b>TVD Reference:</b>	KB @ 5786.00ft
<b>Project:</b>	Garfield County, Colorado	<b>MD Reference:</b>	KB @ 5786.00ft
<b>Site:</b>	Kaufman 6 Pad	<b>North Reference:</b>	True
<b>Well:</b>	Kaufman 22D-24-692	<b>Survey Calculation Method:</b>	Minimum Curvature
<b>Wellbore:</b>	Wellbore #1		
<b>Design:</b>	plan1 02jun10 smw		

Plan Annotations				
Measured Depth (ft)	Vertical Depth (ft)	Local Coordinates		Comment
		+N/-S (ft)	+E/-W (ft)	
1,000.00	1,000.00	0.00	0.00	Start Build 2.50
1,752.46	1,739.02	-8.89	-122.10	Start 2316.97 hold at 1752.46 MD
4,069.44	3,932.23	-63.16	-867.25	Start Drop -2.00
5,010.02	4,856.00	-74.28	-1,019.87	Start 2620.00 hold at 5010.02 MD
7,630.02	7,476.00	-74.28	-1,019.87	TD at 7630.02