

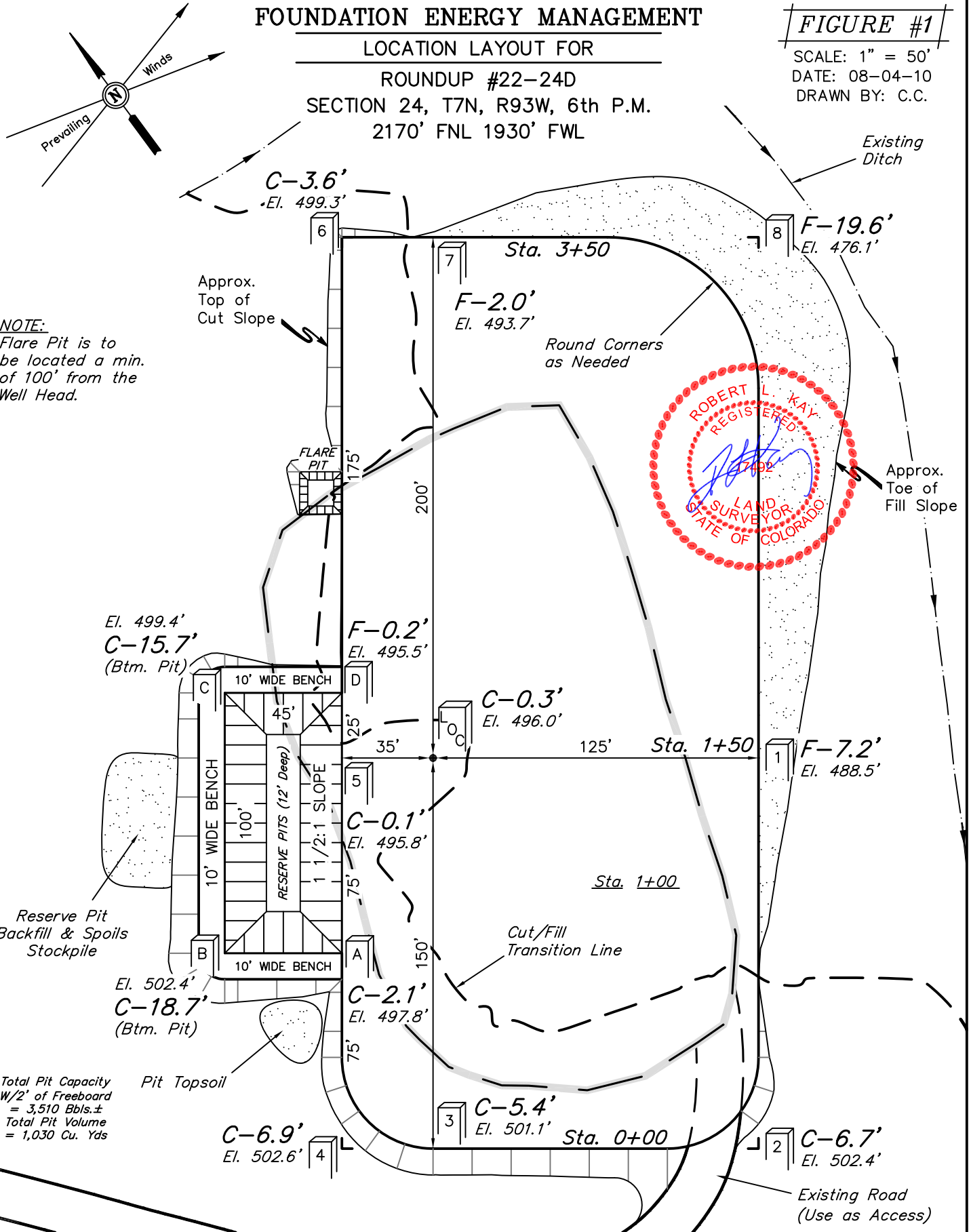
FOUNDATION ENERGY MANAGEMENT

LOCATION LAYOUT FOR

ROUNDUP #22-24D
SECTION 24, T7N, R93W, 6th P.M.
2170' FNL 1930' FWL

FIGURE #1

SCALE: 1" = 50'
DATE: 08-04-10
DRAWN BY: C.C.



NOTE:
Flare Pit is to be located a min. of 100' from the Well Head.

Total Pit Capacity
W/2' of Freeboard
= 3,510 Bbls.±
Total Pit Volume
= 1,030 Cu. Yds

Elev. Ungraded Ground At Loc. Stake = 6496.0'
FINISHED GRADE ELEV. AT LOC. STAKE = 6495.7'

UINTAH ENGINEERING & LAND SURVEYING
85 So. 200 East * Vernal, Utah 84078 * (435) 789-1017

FOUNDATION ENERGY MANAGEMENT

FIGURE #2

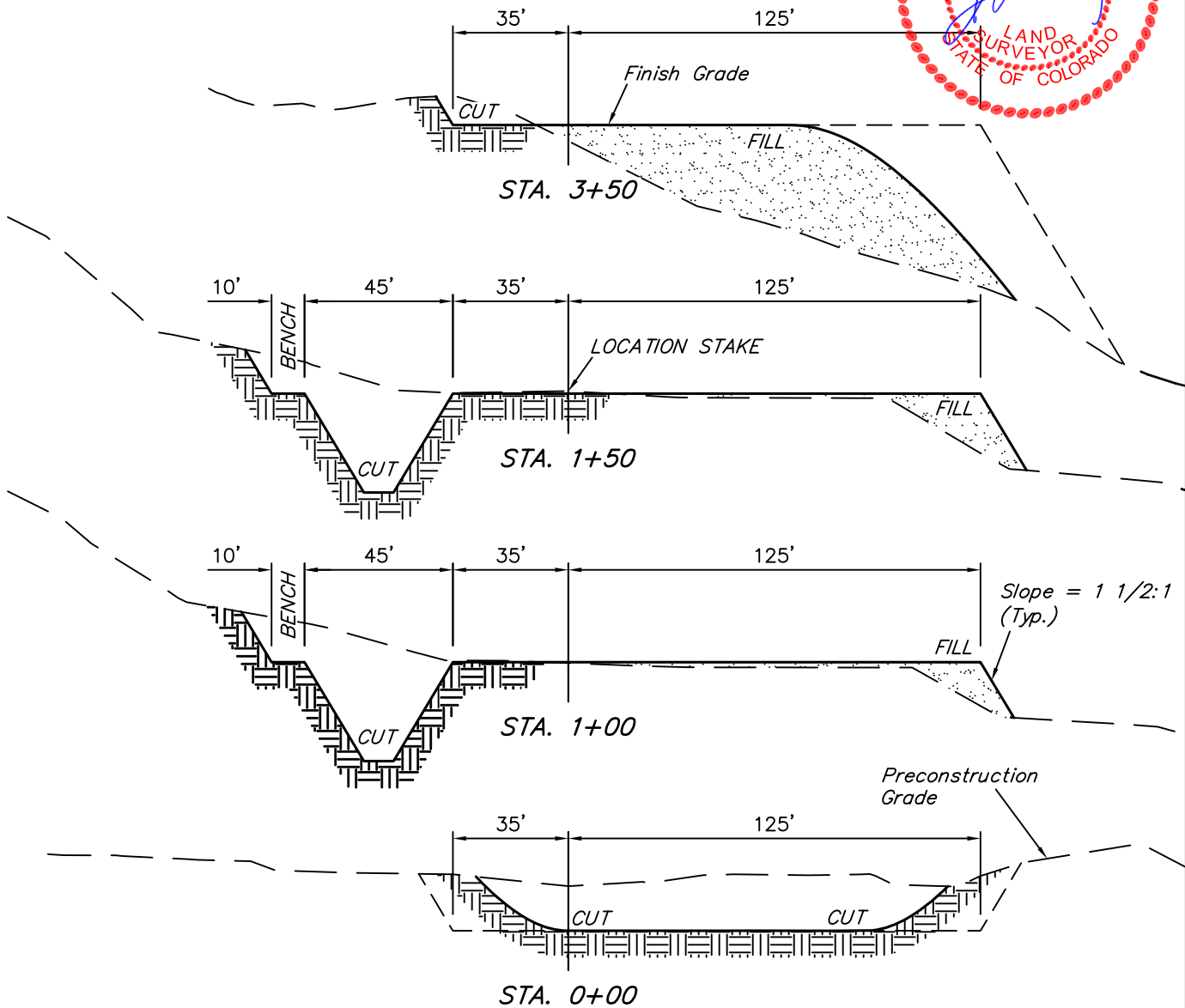
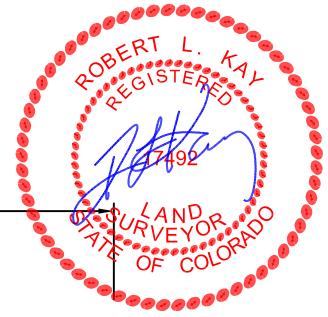
TYPICAL CROSS SECTIONS FOR

ROUNDUP #22-24D

SECTION 24, T7N, R93W, 6th P.M.

2170' FNL 1930' FWL

1" = 20'
X-Section Scale
1" = 50'
DATE: 08-04-10
DRAWN BY: C.C.



APPROXIMATE ACREAGES
 EXISTING WELL SITE DISTURBANCE = ± 0.756 ACRES
 NEW WELL SITE DISTURBANCE = ± 1.035 ACRES
 TOTAL = ± 1.791 ACRES

* NOTE:
 FILL QUANTITY INCLUDES
 5% FOR COMPACTION

APPROXIMATE YARDAGES

(6") Topsoil Stripping = 140 Cu. Yds.
 (New Construction Pit Area Only)
 Remaining Location = 2,890 Cu. Yds.
TOTAL CUT = 3,030 CU.YDS.
FILL = 7,760 CU.YDS.

DEFICIT MATERIAL = <4,730> Cu. Yds.
 Topsoil & Pit Backfill = 660 Cu. Yds.
 (1/2 Pit Vol.)
 DEFICIT UNBALANCE = <5,390> Cu. Yds.
 (After Interim Rehabilitation)

UINTAH ENGINEERING & LAND SURVEYING
 85 So. 200 East * Vernal, Utah 84078 * (435) 789-1017

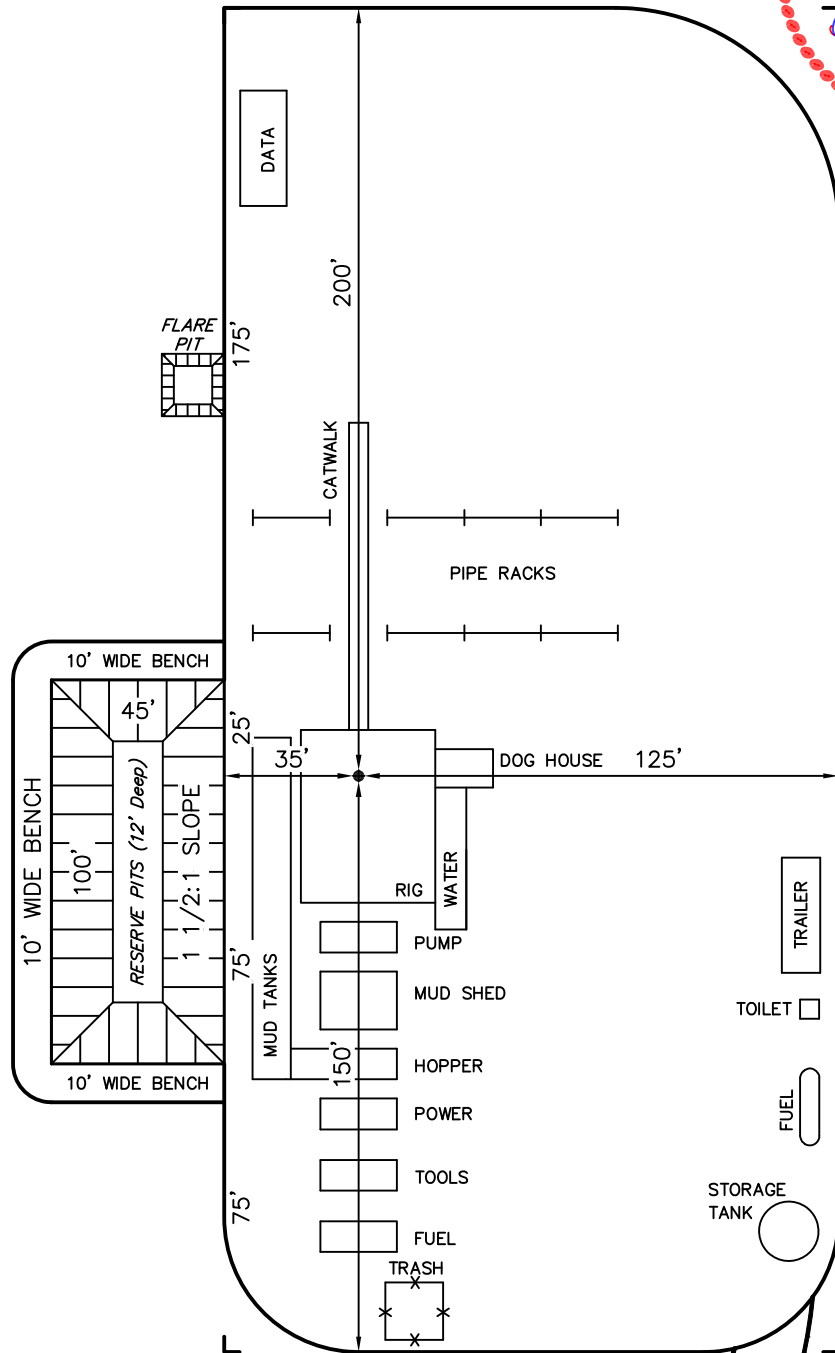
FOUNDATION ENERGY MANAGEMENT

TYPICAL RIG LAYOUT FOR

ROUNDUP #22-24D
SECTION 24, T7N, R93W, 6th P.M.
2170' FNL 1930' FWL

FIGURE #3

SCALE: 1" = 50'
DATE: 08-04-10
DRAWN BY: C.C.



Total Pit Capacity
W/2' of Freeboard
= 3,510 Bbls.±
Total Pit Volume
= 1,030 Cu. Yds

Existing Road
(Use as Access)