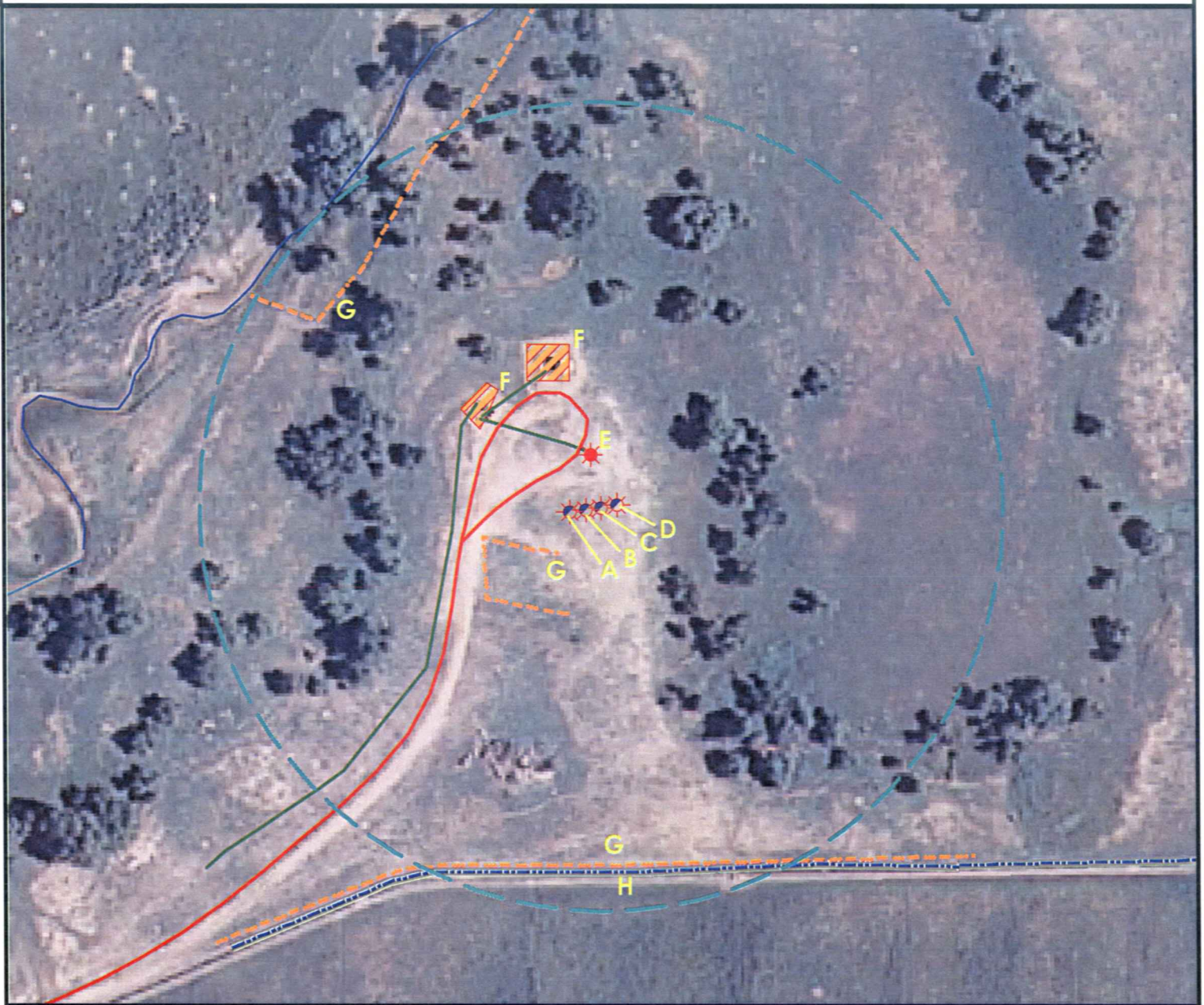


Location Drawing



- | | |
|------------------------------|--|
| A. Proposed Well ROTH 19-19. | E. Existing Well ROTH 11-19 is 47' N. |
| B. Proposed Well ROTH 23-19. | F. Facilities are 129' N and 142' NW. |
| C. Proposed Well ROTH 22-19. | G. Fences are 64' SW, 331' NW, and 352' S. |
| D. Proposed Well ROTH 25-19. | H. Concrete Ditch is 362' S. |



Legend

- | | |
|----------------------|---------------------|
| Proposed Well | Building/Residence |
| Existing Well | Oil & Gas Equipment |
| Plugged Well | Water Body |
| Water Well | Utility Box |
| CattleGuard/Gate | Railroad |
| Bridge | Fence |
| ECD | Overhead Power Line |
| 400' Radius | Pipeline |
| Facilities Enclosure | Access Road |
| | Ditch/Canal |
| | Concrete Ditch |

400ft Radius Map

ROTH 22-19 Pad Multi Well Pad

Surface Location: T6N R64W S19
Description of surface uses : Pasture

Field Date: 12/18/2009
Drawing Date: 12/30/2009
Drafter: KLM
Checked By: MPS

Aerial Photo supplied by NAIP - 2009

Prepared for:
**KERR-MCGEE OIL &
GAS ONSHORE LP**



Use our resources to find yours!
www.petro-fs.com

1801 W. 13th Ave 111 E. Third Street
Denver, CO 80204 Suite 207
(303) 928-7128 Rifle, CO 81650
(970) 625-4740