

Revised: 01-27-2010 JAS

**Exxon Mobil Corporation**

**North Piceance Unit 197-12A  
SEC. 12, T1S, R97W, 6th P.M.**



**Tri-State  
Land Surveying Inc.**  
(435) 781-2501  
180 North Vernal Ave. Vernal, Utah 84078

SCALE: 1" = 2,000'  
DRAWN BY: JAS  
DATE: 04-28-2009

**Legend**  
Existing Road  
Proposed Access

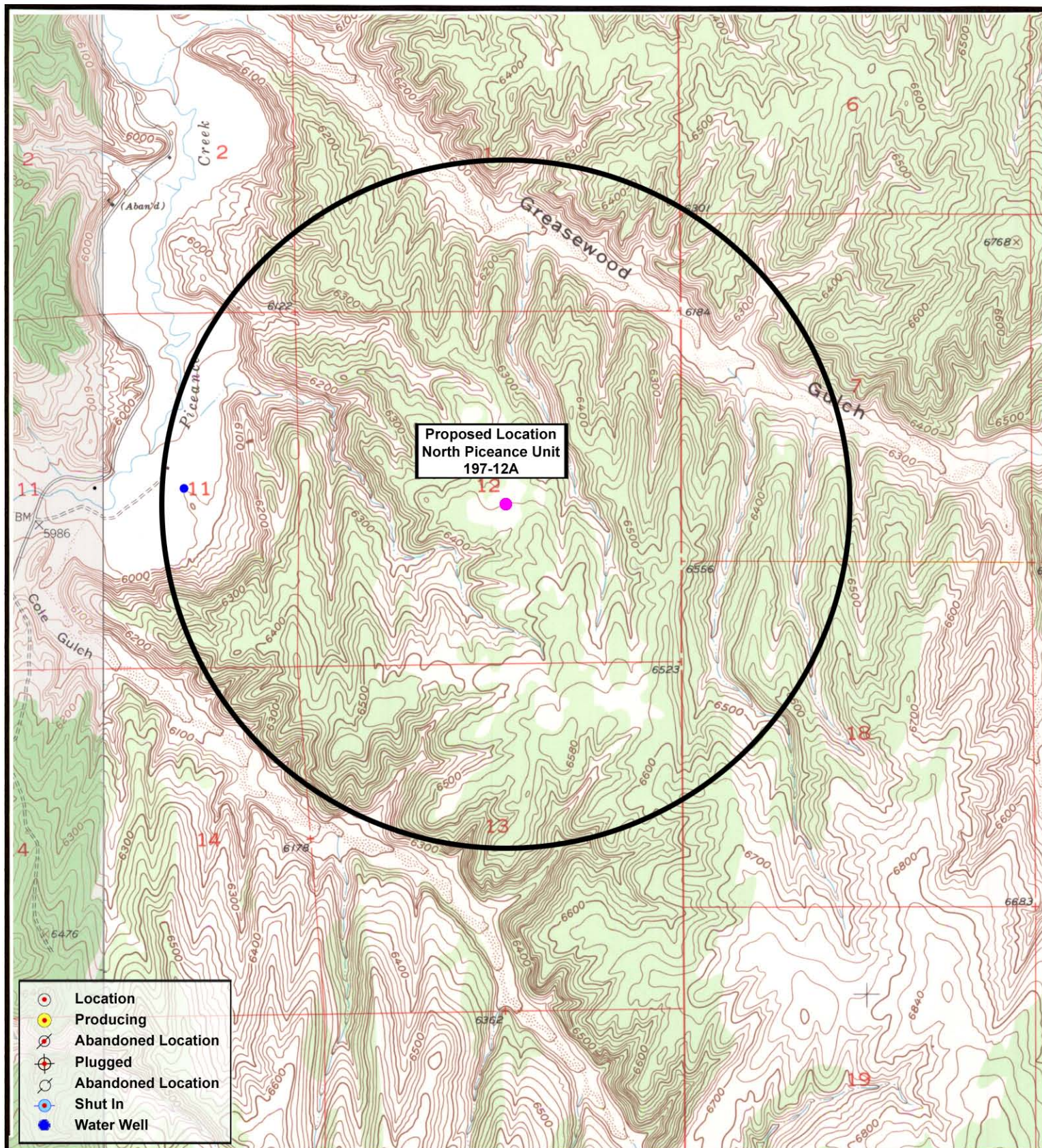
AERIAL MAP

**"B"**

SHEET

**8**





**Exxon Mobil Corporation**

**North Piceance Unit 197-12A  
SEC. 12, T1S, R97W, 6th P.M.**



**Tri-State  
Land Surveying Inc.**  
(435) 781-2501  
180 North Vernal Ave. Vernal, Utah 84078

**SCALE: 1" = 2,000'**  
**DRAWN BY: JAS**  
**DATE: 04-28-2009**

**Legend**

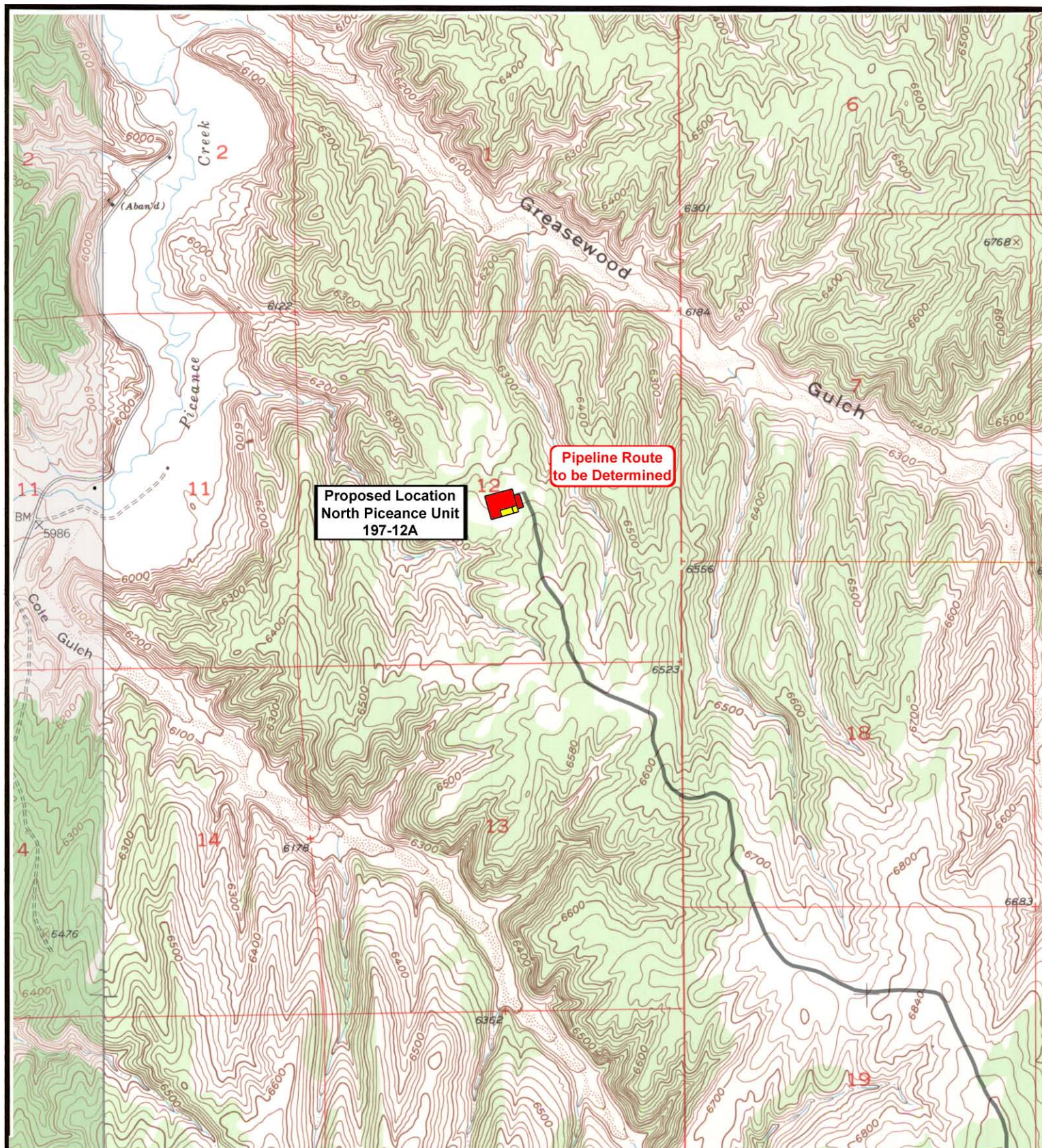
- Location
- One-Mile Radius

**TOPOGRAPHIC MAP**

**"C"**

**SHEET 9**





**Exxon Mobil Corporation**

**North Piceance Unit 197-12A  
SEC. 12, T1S, R97W, 6th P.M.**



**Tri-State  
Land Surveying Inc.**  
(435) 781-2501  
180 North Vernal Ave. Vernal, Utah 84078

**SCALE: 1" = 2,000'**  
**DRAWN BY: JAS**  
**DATE: 04-28-2009**

**Legend**

Roads  
 Proposed Gas Line

**TOPOGRAPHIC MAP**

**"D"**

**SHEET**

**10**