



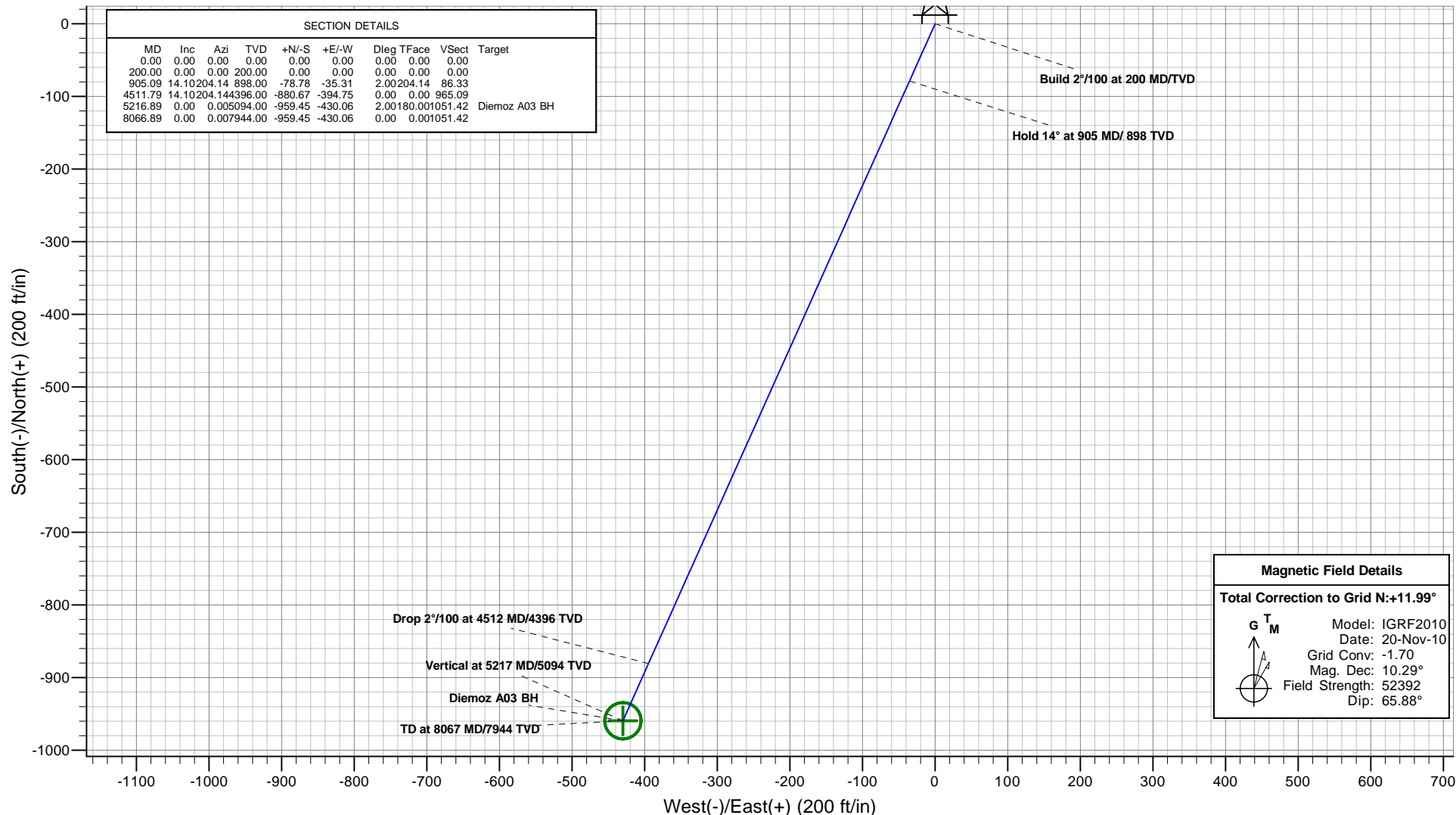
Antero Resources

Diemoz A03 (111241)



PLAN VIEW

Project: Diemoz
Site: Diemoz A Pad
Well: Diemoz A03 (111241)
Wellbore: Diemoz A03
Design: Diemoz A03 P01



Plan: Diemoz A03 P01
Created By: ARK Directional Services
Date: 16:17, August 20 2010

PROJECT DETAILS: Diemoz

Geodetic System: Universal Transverse Mercator
Datum: North American Datum 1983
Ellipsoid: GRS 1980
Zone: Zone 13N (108 W to 102 W)
System Datum: Mean Sea Level

REFERENCE INFORMATION

Co-ordinate (N/E) Reference: Well Diemoz A03 (111241) - Slot A03, Grid North
Vertical (TVD) Reference: KB @ 5674.00ft (Original Well Elev)
Section (VS) Reference: Slot - A03(0.00N, 0.00E)
Measured Depth Reference: KB @ 5674.00ft (Original Well Elev)
Calculation Method: Minimum Curvature

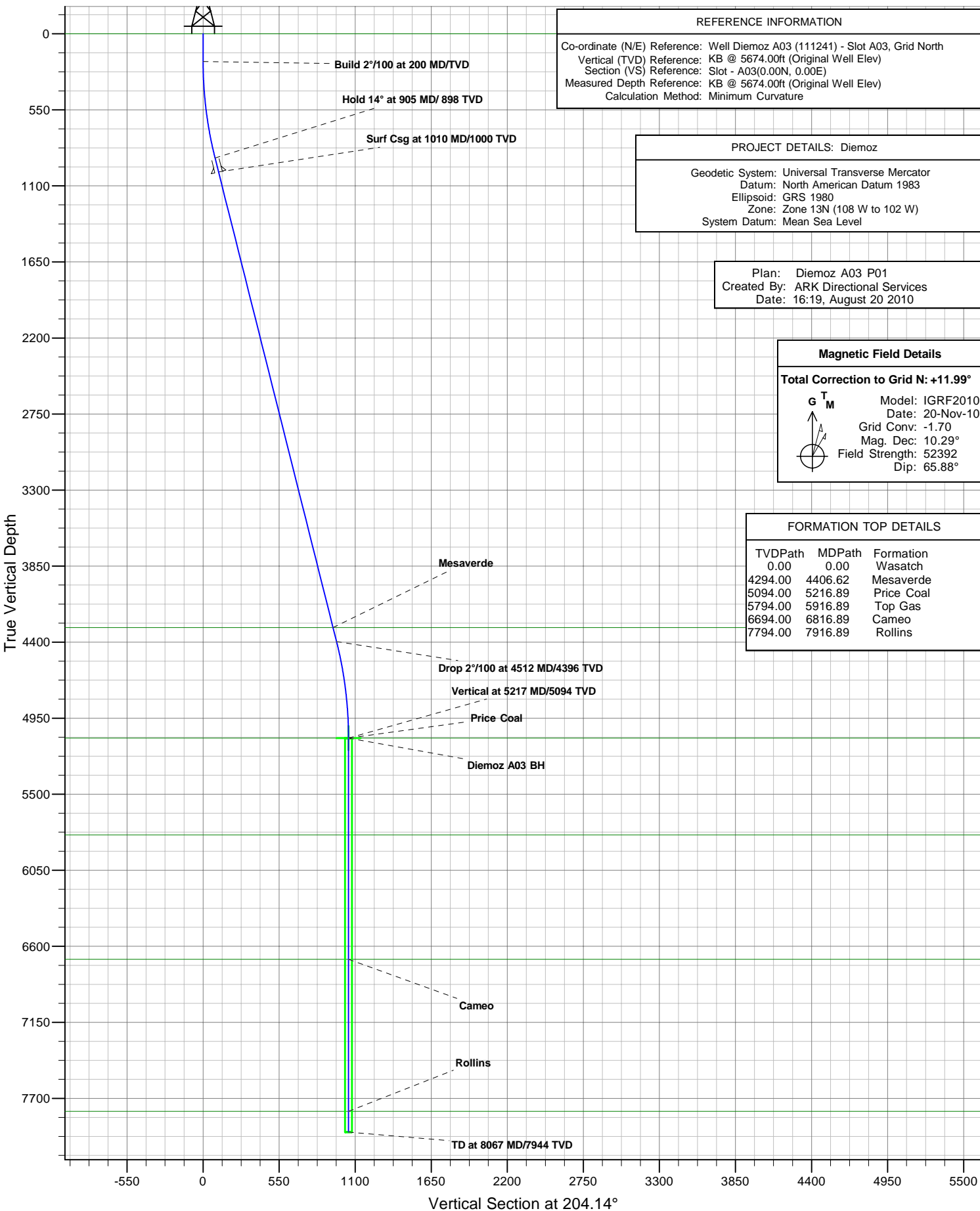


Antero Resources



Diemoz A03 (111241)

VERTICAL SECTION VIEW



REFERENCE INFORMATION

Co-ordinate (N/E) Reference: Well Diemoz A03 (111241) - Slot A03, Grid North
Vertical (TVD) Reference: KB @ 5674.00ft (Original Well Elev)
Section (VS) Reference: Slot - A03(0.00N, 0.00E)
Measured Depth Reference: KB @ 5674.00ft (Original Well Elev)
Calculation Method: Minimum Curvature

PROJECT DETAILS: Diemoz

Geodetic System: Universal Transverse Mercator
Datum: North American Datum 1983
Ellipsoid: GRS 1980
Zone: Zone 13N (108 W to 102 W)
System Datum: Mean Sea Level

Plan: Diemoz A03 P01
Created By: ARK Directional Services
Date: 16:19, August 20 2010

Magnetic Field Details

Total Correction to Grid N: +11.99°

G^T_M Model: IGRF2010
Date: 20-Nov-10
Grid Conv: -1.70
Mag. Dec: 10.29°
Field Strength: 52392
Dip: 65.88°

FORMATION TOP DETAILS

TVDPath	MDPath	Formation
0.00	0.00	Wasatch
4294.00	4406.62	Mesaverde
5094.00	5216.89	Price Coal
5794.00	5916.89	Top Gas
6694.00	6816.89	Cameo
7794.00	7916.89	Rollins

Antero Resources

Diemoz

Diemoz A Pad

Diemoz A03 (111241) - Slot A03

Diemoz A03

Plan: Diemoz A03 P01

Standard Planning Report - Geographic

20 August, 2010

ARK Directional Services

Planning Report - Geographic

Database:	EDM SERVER DB	Local Co-ordinate Reference:	Well Diemoz A03 (111241) - Slot A03
Company:	Antero Resources	TVD Reference:	KB @ 5674.00ft (Original Well Elev)
Project:	Diemoz	MD Reference:	KB @ 5674.00ft (Original Well Elev)
Site:	Diemoz A Pad	North Reference:	Grid
Well:	Diemoz A03 (111241)	Survey Calculation Method:	Minimum Curvature
Wellbore:	Diemoz A03		
Design:	Diemoz A03 P01		

Project	Diemoz		
Map System:	Universal Transverse Mercator	System Datum:	Mean Sea Level
Geo Datum:	North American Datum 1983		
Map Zone:	Zone 13N (108 W to 102 W)		

Site		Diemoz A Pad			
Site Position:		Northing:	14,381,174.161 usft	Latitude:	39.569521288°N
From:	Map	Easting:	887,394.132 usft	Longitude:	107.671988267°W
Position Uncertainty:	0.00 ft	Slot Radius:	13.20 in	Grid Convergence:	-1.70 °

Well	Diemoz A03 (111241) - Slot A03					
Well Position	+N/-S	0.00 ft	Northing:	14,381,181.395 usft	Latitude:	39.569538760°N
	+E/-W	0.00 ft	Easting:	887,365.018 usft	Longitude:	107.672092231°W
Position Uncertainty		0.00 ft	Wellhead Elevation:		Ground Level:	5,650.00 ft

Wellbore	Diemoz A03				
Magnetics	Model Name	Sample Date	Declination (°)	Dip Angle (°)	Field Strength (nT)
	IGRF2010	2010/11/20	10.29	65.88	52,392

Design	Diemoz A03 P01			
Audit Notes:				
Version:	Phase:	PROTOTYPE	Tie On Depth:	0.00
Vertical Section:	Depth From (TVD) (ft)	+N/-S (ft)	+E/-W (ft)	Direction (°)
	0.00	0.00	0.00	204.14

Plan Sections										
Measured Depth (ft)	Inclination (°)	Azimuth (°)	Vertical Depth (ft)	+N/-S (ft)	+E/-W (ft)	Dogleg Rate (°/100ft)	Build Rate (°/100ft)	Turn Rate (°/100ft)	TFO (°)	Target
0.00	0.00	0.00	0.00	0.00	0.00	0.00	0.00	0.00	0.00	
200.00	0.00	0.00	200.00	0.00	0.00	0.00	0.00	0.00	0.00	
905.09	14.10	204.14	898.00	-78.78	-35.31	2.00	2.00	0.00	204.14	
4,511.79	14.10	204.14	4,396.00	-880.67	-394.75	0.00	0.00	0.00	0.00	
5,216.89	0.00	0.00	5,094.00	-959.45	-430.06	2.00	-2.00	0.00	180.00	Diemoz A03 BH
8,066.89	0.00	0.00	7,944.00	-959.45	-430.06	0.00	0.00	0.00	0.00	

ARK Directional Services

Planning Report - Geographic

Database:	EDM SERVER DB	Local Co-ordinate Reference:	Well Diemoz A03 (111241) - Slot A03
Company:	Antero Resources	TVD Reference:	KB @ 5674.00ft (Original Well Elev)
Project:	Diemoz	MD Reference:	KB @ 5674.00ft (Original Well Elev)
Site:	Diemoz A Pad	North Reference:	Grid
Well:	Diemoz A03 (111241)	Survey Calculation Method:	Minimum Curvature
Wellbore:	Diemoz A03		
Design:	Diemoz A03 P01		

Planned Survey									
Measured Depth (ft)	Inclination (°)	Azimuth (°)	Vertical Depth (ft)	+N/-S (ft)	+E/-W (ft)	Map Northing (usft)	Map Easting (usft)	Latitude	Longitude
0.00	0.00	0.00	0.00	0.00	0.00	14,381,181.395	887,365.018	39.569538760°N	107.672092231°W
Wasatch									
100.00	0.00	0.00	100.00	0.00	0.00	14,381,181.395	887,365.018	39.569538760°N	107.672092231°W
200.00	0.00	0.00	200.00	0.00	0.00	14,381,181.395	887,365.018	39.569538760°N	107.672092231°W
Build 2°/100 at 200 MD/TVD									
300.00	2.00	204.14	299.98	-1.59	-0.71	14,381,179.802	887,364.304	39.569534332°N	107.672094593°W
400.00	4.00	204.14	399.84	-6.37	-2.85	14,381,175.027	887,362.163	39.569521057°N	107.672101678°W
500.00	6.00	204.14	499.45	-14.32	-6.42	14,381,167.074	887,358.599	39.569498948°N	107.672113476°W
600.00	8.00	204.14	598.70	-25.44	-11.40	14,381,155.954	887,353.614	39.569468034°N	107.672129973°W
700.00	10.00	204.14	697.47	-39.72	-17.80	14,381,141.680	887,347.216	39.569428353°N	107.672151148°W
800.00	12.00	204.14	795.62	-57.13	-25.61	14,381,124.269	887,339.412	39.569379951°N	107.672176977°W
900.00	14.00	204.14	893.06	-77.65	-34.81	14,381,103.743	887,330.211	39.569322889°N	107.672207428°W
905.09	14.10	204.14	898.00	-78.78	-35.31	14,381,102.614	887,329.705	39.569319753°N	107.672209101°W
Hold 14° at 905 MD/ 898 TVD									
1,000.00	14.10	204.14	990.04	-99.88	-44.77	14,381,081.513	887,320.247	39.569261093°N	107.672240404°W
1,010.00	14.10	204.14	999.74	-102.11	-45.77	14,381,079.290	887,319.251	39.569254912°N	107.672243703°W
Surf Csg at 1010 MD/1000 TVD									
1,100.00	14.10	204.14	1,087.03	-122.11	-54.74	14,381,059.280	887,310.281	39.569199285°N	107.672273387°W
1,200.00	14.10	204.14	1,184.02	-144.35	-64.70	14,381,037.047	887,300.316	39.569137477°N	107.672306370°W
1,300.00	14.10	204.14	1,281.00	-166.58	-74.67	14,381,014.814	887,290.350	39.569075670°N	107.672339352°W
1,400.00	14.10	204.14	1,377.99	-188.81	-84.63	14,380,992.581	887,280.384	39.569013862°N	107.672372335°W
1,500.00	14.10	204.14	1,474.97	-211.05	-94.60	14,380,970.347	887,270.418	39.568952054°N	107.672405317°W
1,600.00	14.10	204.14	1,571.96	-233.28	-104.57	14,380,948.114	887,260.453	39.568890247°N	107.672438299°W
1,700.00	14.10	204.14	1,668.95	-255.51	-114.53	14,380,925.881	887,250.487	39.568828439°N	107.672471282°W
1,800.00	14.10	204.14	1,765.93	-277.75	-124.50	14,380,903.648	887,240.521	39.568766632°N	107.672504264°W
1,900.00	14.10	204.14	1,862.92	-299.98	-134.46	14,380,881.414	887,230.555	39.568704824°N	107.672537246°W
2,000.00	14.10	204.14	1,959.91	-322.21	-144.43	14,380,859.181	887,220.589	39.568643016°N	107.672570228°W
2,100.00	14.10	204.14	2,056.89	-344.45	-154.39	14,380,836.948	887,210.624	39.568581209°N	107.672603210°W
2,200.00	14.10	204.14	2,153.88	-366.68	-164.36	14,380,814.715	887,200.658	39.568519401°N	107.672636192°W
2,300.00	14.10	204.14	2,250.87	-388.91	-174.33	14,380,792.482	887,190.692	39.568457593°N	107.672669174°W
2,400.00	14.10	204.14	2,347.85	-411.15	-184.29	14,380,770.248	887,180.726	39.568395785°N	107.672702156°W
2,500.00	14.10	204.14	2,444.84	-433.38	-194.26	14,380,748.015	887,170.761	39.568333978°N	107.672735138°W
2,600.00	14.10	204.14	2,541.83	-455.61	-204.22	14,380,725.782	887,160.795	39.568272170°N	107.672768120°W
2,700.00	14.10	204.14	2,638.81	-477.85	-214.19	14,380,703.549	887,150.829	39.568210362°N	107.672801102°W
2,800.00	14.10	204.14	2,735.80	-500.08	-224.16	14,380,681.315	887,140.863	39.568148555°N	107.672834083°W
2,900.00	14.10	204.14	2,832.78	-522.31	-234.12	14,380,659.082	887,130.898	39.568086747°N	107.672867065°W
3,000.00	14.10	204.14	2,929.77	-544.55	-244.09	14,380,636.849	887,120.932	39.568024939°N	107.672900047°W
3,100.00	14.10	204.14	3,026.76	-566.78	-254.05	14,380,614.616	887,110.966	39.567963131°N	107.672933028°W
3,200.00	14.10	204.14	3,123.74	-589.01	-264.02	14,380,592.383	887,101.000	39.567901324°N	107.672966010°W
3,300.00	14.10	204.14	3,220.73	-611.25	-273.98	14,380,570.149	887,091.034	39.567839516°N	107.672998991°W
3,400.00	14.10	204.14	3,317.72	-633.48	-283.95	14,380,547.916	887,081.069	39.567777708°N	107.673031972°W
3,500.00	14.10	204.14	3,414.70	-655.71	-293.92	14,380,525.683	887,071.103	39.567715900°N	107.673064954°W
3,600.00	14.10	204.14	3,511.69	-677.95	-303.88	14,380,503.450	887,061.137	39.567654093°N	107.673097935°W
3,700.00	14.10	204.14	3,608.68	-700.18	-313.85	14,380,481.216	887,051.171	39.567592285°N	107.673130916°W
3,800.00	14.10	204.14	3,705.66	-722.41	-323.81	14,380,458.983	887,041.206	39.567530477°N	107.673163897°W
3,900.00	14.10	204.14	3,802.65	-744.65	-333.78	14,380,436.750	887,031.240	39.567468669°N	107.673196878°W
4,000.00	14.10	204.14	3,899.64	-766.88	-343.74	14,380,414.517	887,021.274	39.567406861°N	107.673229859°W
4,100.00	14.10	204.14	3,996.62	-789.11	-353.71	14,380,392.284	887,011.308	39.567345053°N	107.673262840°W
4,200.00	14.10	204.14	4,093.61	-811.35	-363.68	14,380,370.050	887,001.342	39.567283246°N	107.673295821°W
4,300.00	14.10	204.14	4,190.59	-833.58	-373.64	14,380,347.817	886,991.377	39.567221438°N	107.673328802°W
4,400.00	14.10	204.14	4,287.58	-855.81	-383.61	14,380,325.584	886,981.411	39.567159630°N	107.673361783°W
4,406.62	14.10	204.14	4,294.00	-857.28	-384.27	14,380,324.112	886,980.751	39.567155539°N	107.673363966°W
Mesaverde									
4,500.00	14.10	204.14	4,384.57	-878.05	-393.57	14,380,303.351	886,971.445	39.567097822°N	107.673394763°W

ARK Directional Services

Planning Report - Geographic

Database:	EDM SERVER DB	Local Co-ordinate Reference:	Well Diemoz A03 (111241) - Slot A03
Company:	Antero Resources	TVD Reference:	KB @ 5674.00ft (Original Well Elev)
Project:	Diemoz	MD Reference:	KB @ 5674.00ft (Original Well Elev)
Site:	Diemoz A Pad	North Reference:	Grid
Well:	Diemoz A03 (111241)	Survey Calculation Method:	Minimum Curvature
Wellbore:	Diemoz A03		
Design:	Diemoz A03 P01		

Planned Survey										
Measured Depth (ft)	Inclination (°)	Azimuth (°)	Vertical Depth (ft)	+N/-S (ft)	+E/-W (ft)	Map Northing (usft)	Map Easting (usft)	Latitude	Longitude	
4,511.79	14.10	204.14	4,396.00	-880.67	-394.75	14,380,300.729	886,970.270	39.567090533°N	107.673398653°W	
Drop 2°/100 at 4512 MD/4396 TVD										
4,600.00	12.34	204.14	4,481.87	-899.07	-403.00	14,380,282.322	886,962.019	39.567039364°N	107.673425957°W	
4,700.00	10.34	204.14	4,579.91	-917.01	-411.04	14,380,264.384	886,953.979	39.566989495°N	107.673452567°W	
4,800.00	8.34	204.14	4,678.58	-931.82	-417.68	14,380,249.579	886,947.342	39.566948337°N	107.673474529°W	
4,900.00	6.34	204.14	4,777.76	-943.47	-422.90	14,380,237.925	886,942.119	39.566915939°N	107.673491816°W	
5,000.00	4.34	204.14	4,877.32	-951.96	-426.70	14,380,229.436	886,938.314	39.566892342°N	107.673504407°W	
5,100.00	2.34	204.14	4,977.15	-957.27	-429.09	14,380,224.124	886,935.933	39.566877573°N	107.673512288°W	
5,200.00	0.34	204.14	5,077.11	-959.40	-430.04	14,380,221.994	886,934.978	39.566871651°N	107.673515448°W	
5,216.89	0.00	0.00	5,094.00	-959.45	-430.06	14,380,221.948	886,934.958	39.566871525°N	107.673515515°W	
Vertical at 5217 MD/5094 TVD - Price Coal										
5,300.00	0.00	0.00	5,177.11	-959.45	-430.06	14,380,221.948	886,934.958	39.566871525°N	107.673515515°W	
5,400.00	0.00	0.00	5,277.11	-959.45	-430.06	14,380,221.948	886,934.958	39.566871525°N	107.673515515°W	
5,500.00	0.00	0.00	5,377.11	-959.45	-430.06	14,380,221.948	886,934.958	39.566871525°N	107.673515515°W	
5,600.00	0.00	0.00	5,477.11	-959.45	-430.06	14,380,221.948	886,934.958	39.566871525°N	107.673515515°W	
5,700.00	0.00	0.00	5,577.11	-959.45	-430.06	14,380,221.948	886,934.958	39.566871525°N	107.673515515°W	
5,800.00	0.00	0.00	5,677.11	-959.45	-430.06	14,380,221.948	886,934.958	39.566871525°N	107.673515515°W	
5,900.00	0.00	0.00	5,777.11	-959.45	-430.06	14,380,221.948	886,934.958	39.566871525°N	107.673515515°W	
5,916.89	0.00	0.00	5,794.00	-959.45	-430.06	14,380,221.948	886,934.958	39.566871525°N	107.673515515°W	
Top Gas										
6,000.00	0.00	0.00	5,877.11	-959.45	-430.06	14,380,221.948	886,934.958	39.566871525°N	107.673515515°W	
6,100.00	0.00	0.00	5,977.11	-959.45	-430.06	14,380,221.948	886,934.958	39.566871525°N	107.673515515°W	
6,200.00	0.00	0.00	6,077.11	-959.45	-430.06	14,380,221.948	886,934.958	39.566871525°N	107.673515515°W	
6,300.00	0.00	0.00	6,177.11	-959.45	-430.06	14,380,221.948	886,934.958	39.566871525°N	107.673515515°W	
6,400.00	0.00	0.00	6,277.11	-959.45	-430.06	14,380,221.948	886,934.958	39.566871525°N	107.673515515°W	
6,500.00	0.00	0.00	6,377.11	-959.45	-430.06	14,380,221.948	886,934.958	39.566871525°N	107.673515515°W	
6,600.00	0.00	0.00	6,477.11	-959.45	-430.06	14,380,221.948	886,934.958	39.566871525°N	107.673515515°W	
6,700.00	0.00	0.00	6,577.11	-959.45	-430.06	14,380,221.948	886,934.958	39.566871525°N	107.673515515°W	
6,800.00	0.00	0.00	6,677.11	-959.45	-430.06	14,380,221.948	886,934.958	39.566871525°N	107.673515515°W	
6,816.89	0.00	0.00	6,694.00	-959.45	-430.06	14,380,221.948	886,934.958	39.566871525°N	107.673515515°W	
Cameo										
6,900.00	0.00	0.00	6,777.11	-959.45	-430.06	14,380,221.948	886,934.958	39.566871525°N	107.673515515°W	
7,000.00	0.00	0.00	6,877.11	-959.45	-430.06	14,380,221.948	886,934.958	39.566871525°N	107.673515515°W	
7,100.00	0.00	0.00	6,977.11	-959.45	-430.06	14,380,221.948	886,934.958	39.566871525°N	107.673515515°W	
7,200.00	0.00	0.00	7,077.11	-959.45	-430.06	14,380,221.948	886,934.958	39.566871525°N	107.673515515°W	
7,300.00	0.00	0.00	7,177.11	-959.45	-430.06	14,380,221.948	886,934.958	39.566871525°N	107.673515515°W	
7,400.00	0.00	0.00	7,277.11	-959.45	-430.06	14,380,221.948	886,934.958	39.566871525°N	107.673515515°W	
7,500.00	0.00	0.00	7,377.11	-959.45	-430.06	14,380,221.948	886,934.958	39.566871525°N	107.673515515°W	
7,600.00	0.00	0.00	7,477.11	-959.45	-430.06	14,380,221.948	886,934.958	39.566871525°N	107.673515515°W	
7,700.00	0.00	0.00	7,577.11	-959.45	-430.06	14,380,221.948	886,934.958	39.566871525°N	107.673515515°W	
7,800.00	0.00	0.00	7,677.11	-959.45	-430.06	14,380,221.948	886,934.958	39.566871525°N	107.673515515°W	
7,900.00	0.00	0.00	7,777.11	-959.45	-430.06	14,380,221.948	886,934.958	39.566871525°N	107.673515515°W	
7,916.89	0.00	0.00	7,794.00	-959.45	-430.06	14,380,221.948	886,934.958	39.566871525°N	107.673515515°W	
Rollins										
8,000.00	0.00	0.00	7,877.11	-959.45	-430.06	14,380,221.948	886,934.958	39.566871525°N	107.673515515°W	
8,066.89	0.00	0.00	7,944.00	-959.45	-430.06	14,380,221.948	886,934.958	39.566871525°N	107.673515515°W	
TD at 8067 MD/7944 TVD										

ARK Directional Services

Planning Report - Geographic

Database:	EDM SERVER DB	Local Co-ordinate Reference:	Well Diemoz A03 (111241) - Slot A03
Company:	Antero Resources	TVD Reference:	KB @ 5674.00ft (Original Well Elev)
Project:	Diemoz	MD Reference:	KB @ 5674.00ft (Original Well Elev)
Site:	Diemoz A Pad	North Reference:	Grid
Well:	Diemoz A03 (111241)	Survey Calculation Method:	Minimum Curvature
Wellbore:	Diemoz A03		
Design:	Diemoz A03 P01		

Design Targets									
Target Name	Dip Angle	Dip Dir.	TVD	+N/-S	+E/-W	Northing	Easting	Latitude	Longitude
- hit/miss target	(°)	(°)	(ft)	(ft)	(ft)	(usft)	(usft)		
- Shape									
Diemoz A03 BH	0.00	0.00	5,094.00	-959.45	-430.06	14,380,221.948	886,934.958	39.566871525°N	107.673515515°W
- plan hits target center									
- Circle (radius 25.00)									

Casing Points					
Measured Depth	Vertical Depth	Name		Casing Diameter	Hole Diameter
(ft)	(ft)			(in)	(in)
1,010.00	999.74	Surf Csg at 1010 MD/1000 TVD		5.50	6.00

Formations					
Measured Depth	Vertical Depth	Name		Dip	Dip Direction
(ft)	(ft)			(°)	(°)
0.00	0.00	Wasatch		0.00	
4,406.62	4,294.00	Mesaverde			
5,216.89	5,094.00	Price Coal			
5,916.89	5,794.00	Top Gas			
6,816.89	6,694.00	Cameo			
7,916.89	7,794.00	Rollins			

Plan Annotations					
Measured Depth	Vertical Depth	Local Coordinates		Comment	
(ft)	(ft)	+N/-S (ft)	+E/-W (ft)		
200.00	200.00	0.00	0.00	Build 2°/100 at 200 MD/TVD	
905.09	898.00	-78.78	-35.31	Hold 14° at 905 MD/ 898 TVD	
4,511.79	4,396.00	-880.67	-394.75	Drop 2°/100 at 4512 MD/4396 TVD	
5,216.89	5,094.00	-959.45	-430.06	Vertical at 5217 MD/5094 TVD	
8,066.89	7,944.00	-959.45	-430.06	TD at 8067 MD/7944 TVD	