



Berry Petroleum Company

1999 Broadway St., Suite 3700

Denver, CO 80202

Ph: (303) 825-3344

Fax: (303) 825-3350

www.bry.com

August 18, 2010

Mr. Bob Weaver
Encana Oil & Gas (USA) Inc.
370 17th Street, Suite 1700
Denver, CO 80202

RE: 30 Day Notice Requirement (Rule 305 and 306)
Long Ridge 05D N15 595, Long Ridge 06B N15 595, Long Ridge 11B N15 595, Long Ridge 11C N15 595, Long Ridge 14A N15 595, Long Ridge 11A N15 595, Long Ridge 11D N15 595, Long Ridge 15C N15 595, Long Ridge 14B N15 595
Section 15- 5S-95W, Garfield County, CO

Dear Bob,

Please be advised that Berry Petroleum Company will be re-filing permits with the Colorado Oil and Gas Conservation Commission for the above-referenced wells.

- There have been no changes on land use and lease description.
- The pad has been built.
- The pit has not been constructed.
- Conductors have been set.
- No wells have been drilled to T.D.
- No rig is on-site at this time.
- The re-files will not require expansion and/or additional surface disturbance of the pad.
- The location does not require a variance from any of the rules listed in Rule 306.d. (1). (A).(ii).
- The location is not in a restricted surface occupancy area.
- The location is not in a sensitive wildlife habitat area.

Pursuant to Rule 305 and 306, the enclosed notification is required as part of the permitting process. Please sign and date where indicated and return to my attention.

Please contact me at 303.999.4246 if you have any questions.

Thank you for your assistance in this matter.

Very truly yours,

Patsy Branson
Senior Landman

:enclosures
cc: Kally Moran
Land Well file

NOTICE REQUIREMENTS (RULE 305)

N15 595 Pad

Re: Well Name – Long Ridge 05D N15 595, Long Ridge 06B N15 595, Long Ridge 11B N15 595, Long Ridge 11C N15 595, Long Ridge 14A N15 595, Long Ridge 11A N15 595, Long Ridge 11D N15 595, Long Ridge 15C N15 595, Long Ridge 14B N15 595– Section 15, 5S 95W, Garfield County, CO

In accordance with the Colorado Oil and Gas Conservation Commission for Notices of Oil and Gas Operations, Rule 305, the following information is required to be provided:

- Operations on the above referenced wells are estimated to commence on November 1, 2010.
- The operator will be: Berry Petroleum Company
1999 Broadway, Suite 3700
Denver, Colorado 80202
(303) 999-4400
- You may contact: Patsy Branson, Senior Landman at (303) 999-4246, if you have any questions regarding this notice.

The legal description of the lands upon which operations will be conducted are:

Long Ridge 05D N15 595 (Formerly 14B) – API 05-045-12927

Section 15, Township 5 South, Range 95 West, Garfield County

Surface Hole Location: 851' FSL and 1972' FWL

Bottom Hole Location:

Original Survey: 835' FSL and 1630' FWL

Revised Survey: 2417' FNL and 909' FWL

Long Ridge 06B N15 595 (Formerly 04B) – API 05-045-12925

Section 15, Township 5 South, Range 95 West, Garfield County

Surface Hole Location: 860' FSL and 1987' FEL

Bottom Hole Location:

Original Survey: 345' FNL and 300' FWL

Revised Survey: 2200' FNL and 1546' FWL

Long Ridge 11B N15 595 – API 05-045-12928

Section 15, Township 5 South, Range 95 West, Garfield County

Surface Hole Location: 859' FSL and 2002' FWL

Bottom Hole Location:

Original Survey: 2190' FSL and 1665' FWL

Revised Survey: 2129' FSL and 1879' FWL

Page 2

N15 595 Pad (9 wells)

Encana Oil & Gas (USA) Inc.

August 18, 2010

Long Ridge 11C N15 595 (Formerly 04D) – API 05-045-12931

Section 15, Township 5 South, Range 95 West, Garfield County

Surface Hole Location: 848' FSL and 2017' FWL

Bottom Hole Location:

Original Survey: 725' FNL and 2017' FWL

Revised Survey: 1790' FSL and 1938' FWL

Long Ridge 14A N15 595 (Formerly 03B) – API 05-045-12926

Section 15, Township 5 South, Range 95 West, Garfield County

Surface Hole Location: 848' FSL and 2032' FWL

Bottom Hole Location:

Original Survey: 485' FNL and 1625' FWL

Revised Survey: 1171' FSL and 2015' FWL

Long Ridge 11A N15 595 (Formerly 14A) – API 05-045-12930

Section 15, Township 5 South, Range 95 West, Garfield County

Surface Hole Location: 847' FSL and 2047' FWL

Bottom Hole Location:

Original Survey: 1320' FSL and 2360' FWL

Revised Survey: 2494' FSL and 2126' FWL

Long Ridge 03D N15 595 (Formerly 11D) – API 05-045-12924

Section 15, Township 5 South, Range 95 West, Garfield County

Surface Hole Location: 846' FSL and 2062' FWL

Bottom Hole Location:

Original Survey: 925' FNL and 2275' FWL

Revised Survey: 1496' FSL and 2266' FWL

Long Ridge 15C N15 595 (Formerly 14D) – API 05-045-12929

Section 15, Township 5 South, Range 95 West, Garfield County

Surface Hole Location: 845' FSL and 2077' FWL

Bottom Hole Location:

Original Survey: 525' FSL 2445' FWL

Revised Survey: 198' FSL and 2172' FEL

Long Ridge 14B N15 595 (NEW**) – API **Pending****

Section 15, Township 5 South, Range 95 West, Garfield County

Surface Hole Location: 854' FSL and 2092' FEL

Bottom Hole Location: 882' FSL and 2207' FWL

Page 3
N15 595 Pad (9 wells)
Encana Oil & Gas (USA) Inc.
August 18, 2010

- The surface owner has the responsibility for notifying any affected tenant of the proposed operations.
- A brochure describing surface owner rights is available upon request from:
Colorado Oil and Gas Conservation Commission
1120 Lincoln Street
Suite 801
Denver, Co 80203

By signing below, the surface owner waives the above notification requirements of Rule 305.

Encana Oil & Gas (U.S.A.) Inc.

By: _____

Printed Name: _____

Title: _____

Date: _____


SURFACE OWNER CONSULTATION (RULE 306)

Berry Petroleum Company confirms that the Surface Owner Consultation requirements of Rule 306 have been completed or waived for the following proposed well pad.


**Well Name – Long Ridge 05D N15 595, Long Ridge 06B N15 595, Long Ridge 11B N15 595, Long Ridge 11C N15 595, Long Ridge 14A N15 595, Long Ridge 11A N15 595, Long Ridge 11D N15 595, Long Ridge 15C N15 595, Long Ridge 14B N15 595–
Section 15, 5S 95W, Garfield County, CO**

Road Description: Existing roadway use and new construction as required for access was previously agreed upon by all parties.

Berry Petroleum Company

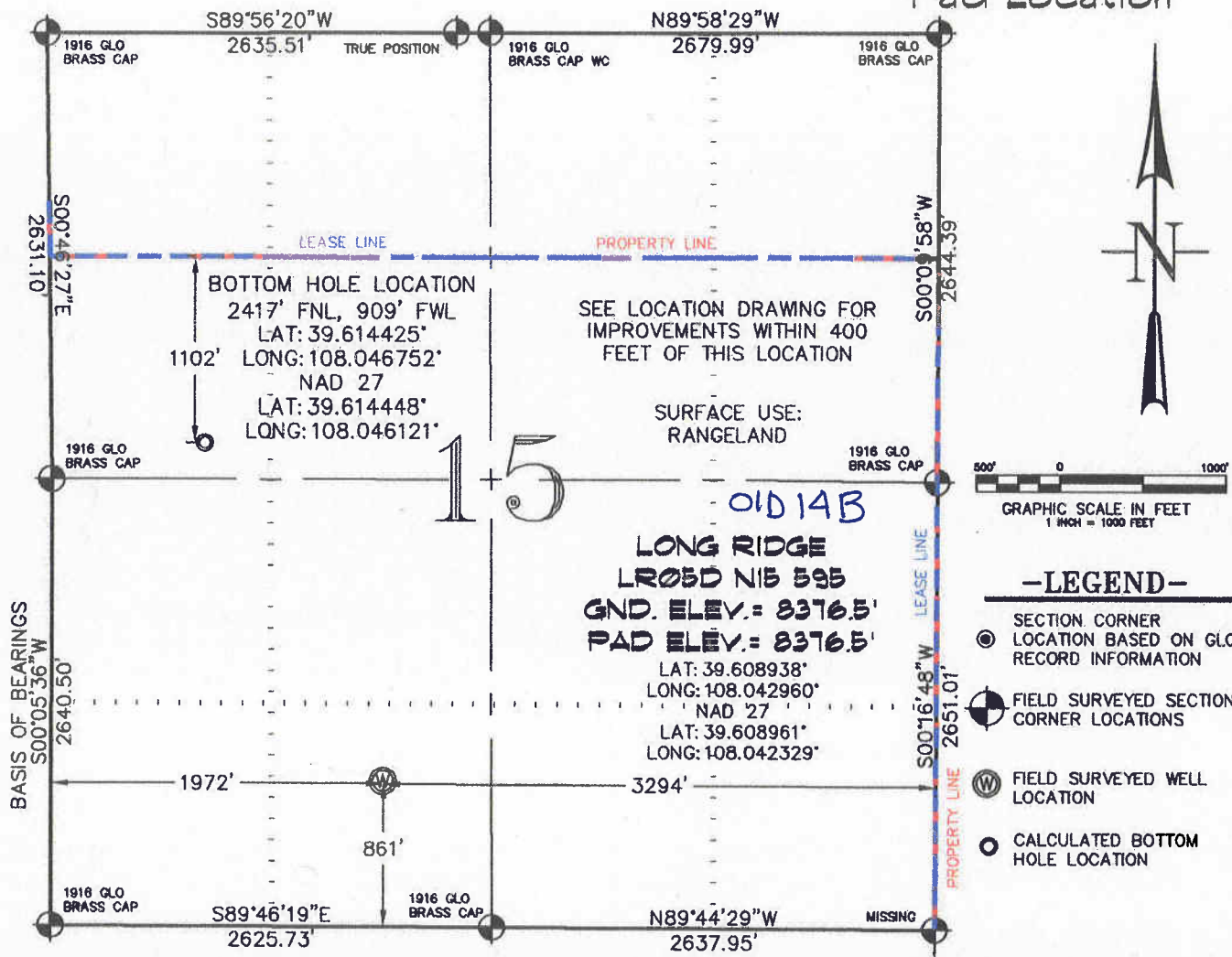


Patsy Branson
Senior Landman



Date

SEC. 15, T. 5 S., R. 95 W. OF THE 6TH P.M. Long Ridge N15-595
Pad Location



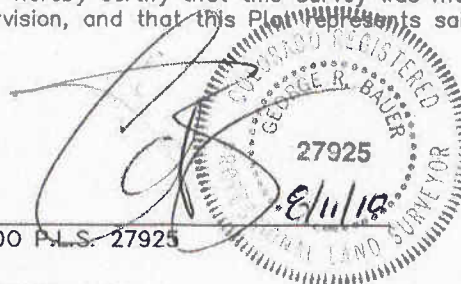
THIS WELL LOCATION PLAT WAS PREPARED FOR BERRY PETROLEUM COMPANY TO LOCATE THE LONG RIDGE LR05D N15 595 WELL, 861 FEET FROM THE SOUTH LINE AND 1972 FEET FROM THE WEST LINE IN THE SE1/4 SW1/4 OF SECTION 15, T. 5 S., R. 95 W. OF THE 6TH P.M. GARFIELD COUNTY, COLORADO.

REFERENCE NOTES

- 1) T. 5 S., R. 95 W., 6TH P.M. GLO PLAT.
- 2) U.S.G.S. QUAD: FORKED GULCH, CO
- 3) ELEVATIONS BASED ON N.A.V.D. 1988
- 4) LATITUDES AND LONGITUDES ARE BASED ON NAD 83, COLORADO CENTRAL ZONE.
- 5) GPS OPERATOR IVAN MARTIN, OBSERVED A PDOP OF 2.4.
- 6) ALL GPS OBSERVATIONS ARE IN COMPLIANCE WITH COGCC RULE NO. 215.
- 7) SURFACE AND BOTTOM HOLE LOCATIONS ARE MEASURED 90° FROM SECTION LINES.

SURVEYOR'S CERTIFICATE

I, George R. Bauer: a Professional Land Surveyor in the State of Colorado do hereby certify that this Survey was made under my direct supervision, and that this Plan represents said Survey.



COLORADO P.L.S. 27925



CONSTRUCTION SURVEYS, INC.

0012 SUNRISE BLVD.

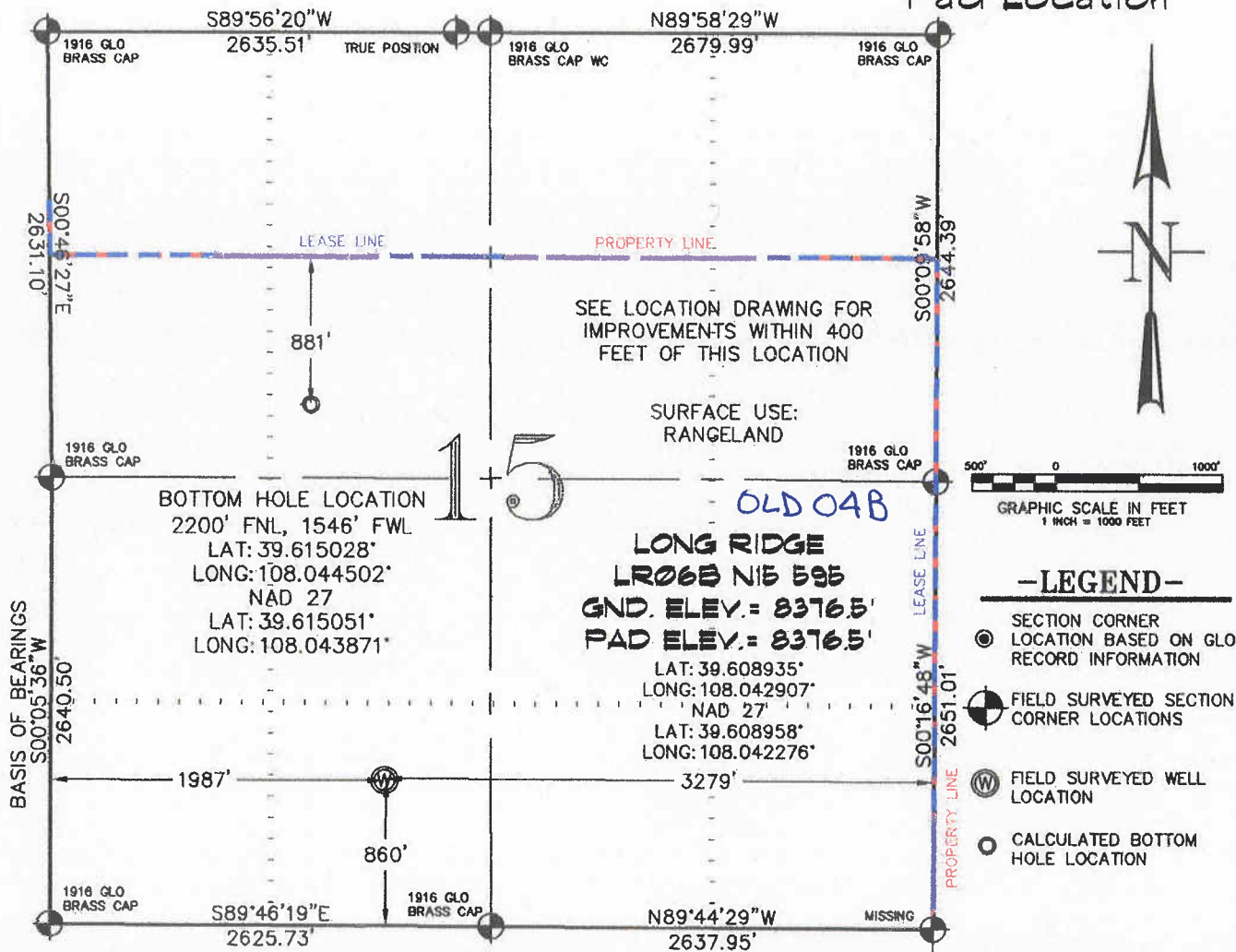
SILT, CO 81652

(970)876-5753

VIEW: 1A

SURVEYED: 06/22/10	SCALE: 1" = 1000'
DRAFTED: 07/01/10	DWG: Berry/LongRidgeN15-595.dwg
REVISED: 08/10/10	SHEET: 1 of 11

SEC. 15, T. 5 S., R. 95 W. OF THE 6TH P.M. Long Ridge N15-595
Pad Location



THIS WELL LOCATION PLAT WAS PREPARED FOR BERRY PETROLEUM COMPANY TO LOCATE THE LONG RIDGE LR06B N15 595 WELL, 860 FEET FROM THE SOUTH LINE AND 1987 FEET FROM THE WEST LINE IN THE SE1/4 SW1/4 OF SECTION 15, T. 5 S., R. 95 W. OF THE 6TH P.M. GARFIELD COUNTY, COLORADO.

REFERENCE NOTES

- 1) T. 5 S., R. 95 W., 6TH P.M. GLO PLAT.
- 2) U.S.G.S. QUAD: FORKED GULCH, CO
- 3) ELEVATIONS BASED ON N.A.V.D. 1988
- 4) LATITUDES AND LONGITUDES ARE BASED ON NAD 83, COLORADO CENTRAL ZONE.
- 5) GPS OPERATOR IVAN MARTIN, OBSERVED A PDOP OF 2.4.
- 6) ALL GPS OBSERVATIONS ARE IN COMPLIANCE WITH COGCC RULE NO. 215.
- 7) SURFACE AND BOTTOM HOLE LOCATIONS ARE MEASURED 90° FROM SECTION LINES.

SURVEYOR'S CERTIFICATE

I, George R. Bauer: a Professional Land Surveyor in the State of Colorado do hereby certify that this Survey was made under my direct supervision, and that this Plat represents said Survey.



COLORADO P.L.S. 27925

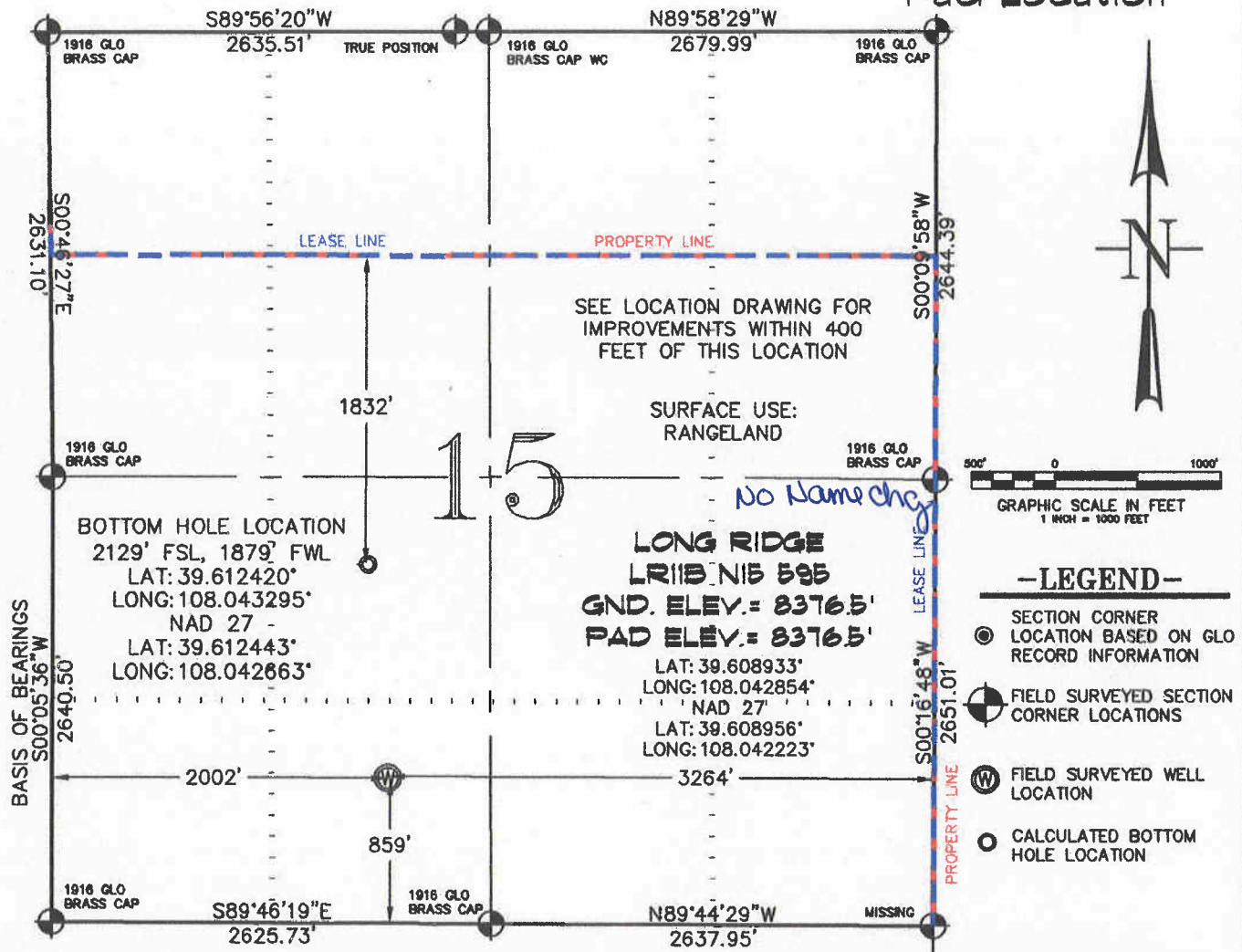
VIEW: 1B



CONSTRUCTION SURVEYS, INC.
0012 SUNRISE BLVD.
SILT, CO 81652
(970)876-5753

SURVEYED: 06/22/10	SCALE: 1" = 1000'
DRAFTED: 07/01/10	DWG: Berry/LongRidgeN15-595.dwg
REVISED: 08/10/10	SHEET: 1 of 11

SEC. 15, T. 5 S., R. 95 W. OF THE 6TH P.M. Long Ridge N15-595
Pad Location



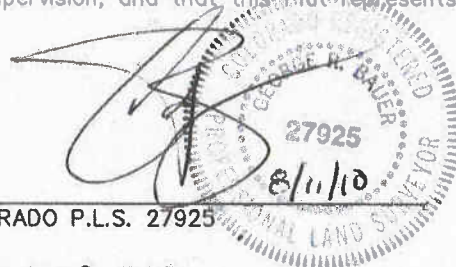
THIS WELL LOCATION PLAT WAS PREPARED FOR BERRY PETROLEUM COMPANY TO LOCATE THE LONG RIDGE LR11B N15 595 WELL, 859 FEET FROM THE SOUTH LINE AND 2002 FEET FROM THE WEST LINE IN THE SE1/4 SW1/4 OF SECTION 15, T. 5 S., R. 95 W. OF THE 6TH P.M. GARFIELD COUNTY, COLORADO.

REFERENCE NOTES

- 1) T. 5 S., R. 95 W., 6TH P.M. GLO PLAT.
- 2) U.S.G.S. QUAD: FORKED GULCH, CO
- 3) ELEVATIONS BASED ON N.A.V.D. 1988
- 4) LATITUDES AND LONGITUDES ARE BASED ON NAD 83, COLORADO CENTRAL ZONE.
- 5) GPS OPERATOR IVAN MARTIN, OBSERVED A PDOP OF 2.4.
- 6) ALL GPS OBSERVATIONS ARE IN COMPLIANCE WITH COGCC RULE NO. 215.
- 7) SURFACE AND BOTTOM HOLE LOCATIONS ARE MEASURED 90° FROM SECTION LINES.

SURVEYOR'S CERTIFICATE

I, George R. Bauer, a Professional Land Surveyor in the State of Colorado do hereby certify that this Survey was made under my direct supervision, and that this PLAT represents said Survey.



COLORADO P.L.S. 27925

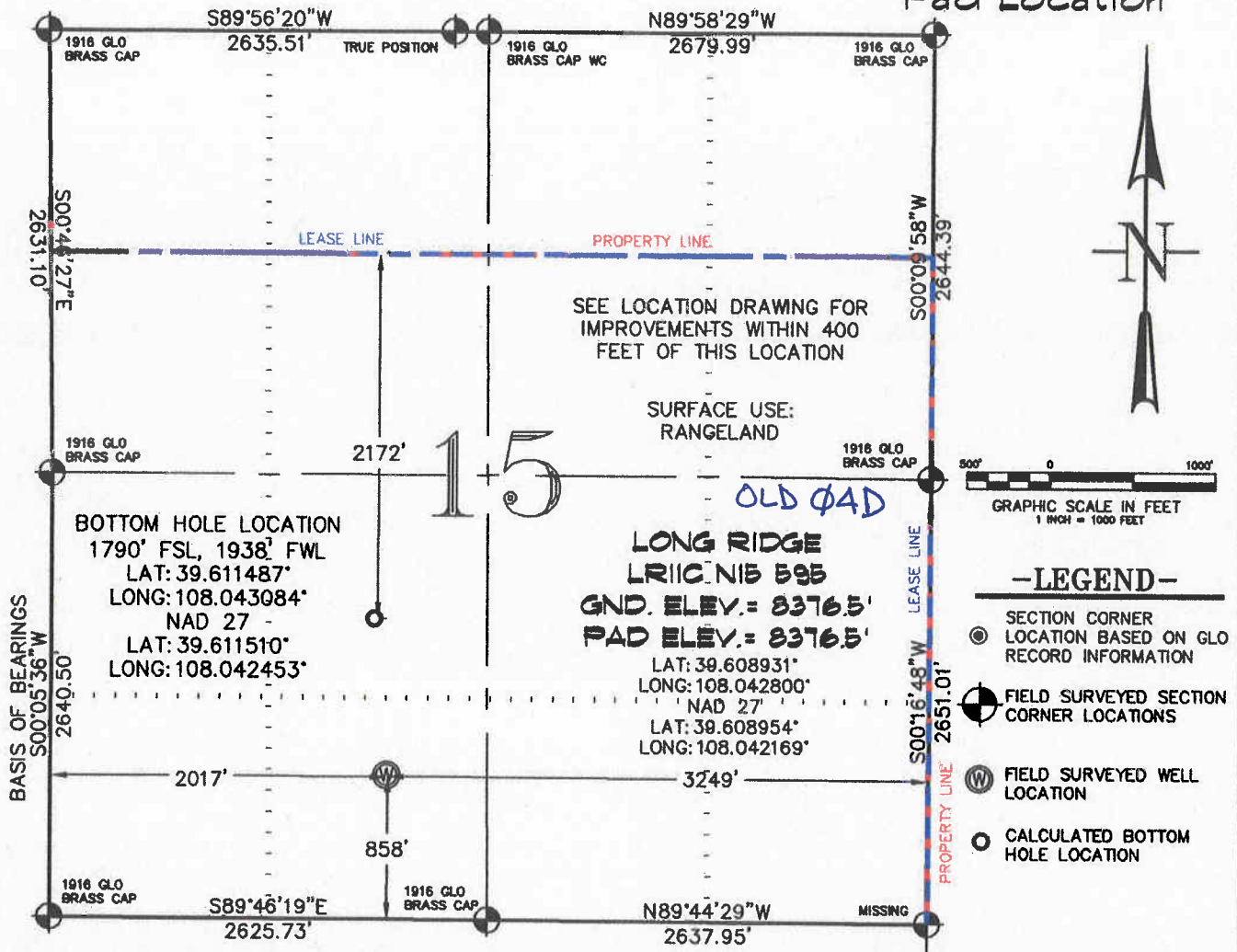


CONSTRUCTION SURVEYS, INC.
2012 SUNRISE BLVD.
BILT, CO 81652
(970) 876-5753

VIEW: 1C

SURVEYED: 06/22/10	SCALE: 1" = 1000'
DRAFTED: 07/01/10	DWG: Berry/LongRidgeN15-595.dwg
REVISED: 08/10/10	SHEET: 1 of 11

SEC. 15, T. 5 S., R. 95 W. OF THE 6TH P.M. Long Ridge N15-595
Pad Location



-LEGEND-

- SECTION CORNER
- LOCATION BASED ON GLO RECORD INFORMATION
- FIELD SURVEYED SECTION CORNER LOCATIONS
- FIELD SURVEYED WELL LOCATION
- CALCULATED BOTTOM HOLE LOCATION

THIS WELL LOCATION PLAT WAS PREPARED FOR BERRY PETROLEUM COMPANY TO LOCATE THE LONG RIDGE LR11C N15 595 WELL, 858 FEET FROM THE SOUTH LINE AND 2017 FEET FROM THE WEST LINE IN THE SE1/4 SW1/4 OF SECTION 15, T. 5 S., R. 95 W. OF THE 6TH P.M. GARFIELD COUNTY, COLORADO.

REFERENCE NOTES

- 1) T. 5 S., R. 95 W., 6TH P.M. GLO PLAT.
- 2) U.S.G.S. QUAD: FORKED GULCH, CO
- 3) ELEVATIONS BASED ON N.A.V.D. 1988
- 4) LATITUDES AND LONGITUDES ARE BASED ON NAD 83, COLORADO CENTRAL ZONE.
- 5) GPS OPERATOR: IVAN MARTIN, OBSERVED A PDOP OF 2.4.
- 6) ALL GPS OBSERVATIONS ARE IN COMPLIANCE WITH COGCC RULE NO. 215.
- 7) SURFACE AND BOTTOM HOLE LOCATIONS ARE MEASURED 90° FROM SECTION LINES.

SURVEYOR'S CERTIFICATE

I, George R. Bauer: a Professional Land Surveyor in the State of Colorado do hereby certify that this Survey was made under my direct supervision, and that this Plat represents said Survey.



COLORADO P.L.S. 27925

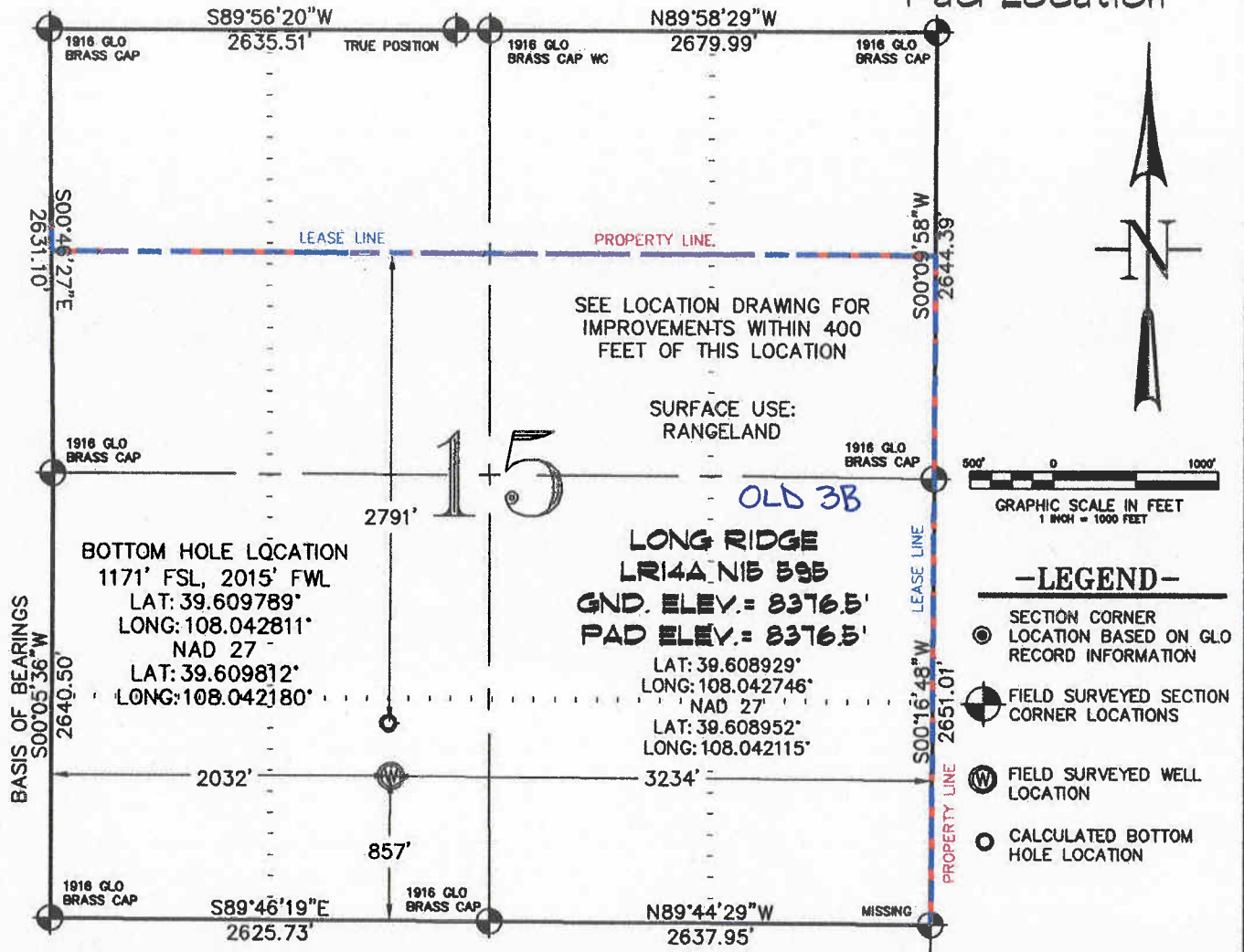


CONSTRUCTION SURVEYS, INC.
0012 SUNRISE BLVD.
SILT, CO 81652
(970)876-5753

VIEW: 1D

SURVEYED: 06/22/10	SCALE: 1" = 1000'
DRAFTED: 07/01/10	DWG: Berry/LongRidgeN15-595.dwg
REVISED: 08/10/10	SHEET: 1 of 11

SEC. 15, T. 5 S., R. 95 W. OF THE 6TH P.M. Long Ridge N15-595
Pad Location



THIS WELL LOCATION PLAT WAS PREPARED FOR BERRY PETROLEUM COMPANY TO LOCATE THE LONG RIDGE LR14A N15 595 WELL, 857 FEET FROM THE SOUTH LINE AND 2032 FEET FROM THE WEST LINE IN THE SE1/4 SW1/4 OF SECTION 15, T. 5 S., R. 95 W. OF THE 6TH P.M. GARFIELD COUNTY, COLORADO.

REFERENCE NOTES

- 1) T. 5 S., R. 95 W., 6TH P.M. GLO PLAT.
- 2) U.S.G.S. QUAD: FORKED GULCH, CO
- 3) ELEVATIONS BASED ON N.A.V.D. 1988
- 4) LATITUDES AND LONGITUDES ARE BASED ON NAD 83, COLORADO CENTRAL ZONE.
- 5) GPS OPERATOR IVAN MARTIN, OBSERVED A PDOP OF 2.4.
- 6) ALL GPS OBSERVATIONS ARE IN COMPLIANCE WITH COGCC RULE NO. 215.
- 7) SURFACE AND BOTTOM HOLE LOCATIONS ARE MEASURED 90° FROM SECTION LINES.

SURVEYOR'S CERTIFICATE

I, George R. Bauer, a Professional Land Surveyor in the State of Colorado do hereby certify that this Survey was made under my direct supervision, and that this Plat represents said Survey.



COLORADO P.L.S. 27925

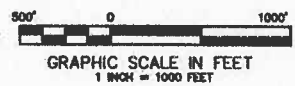
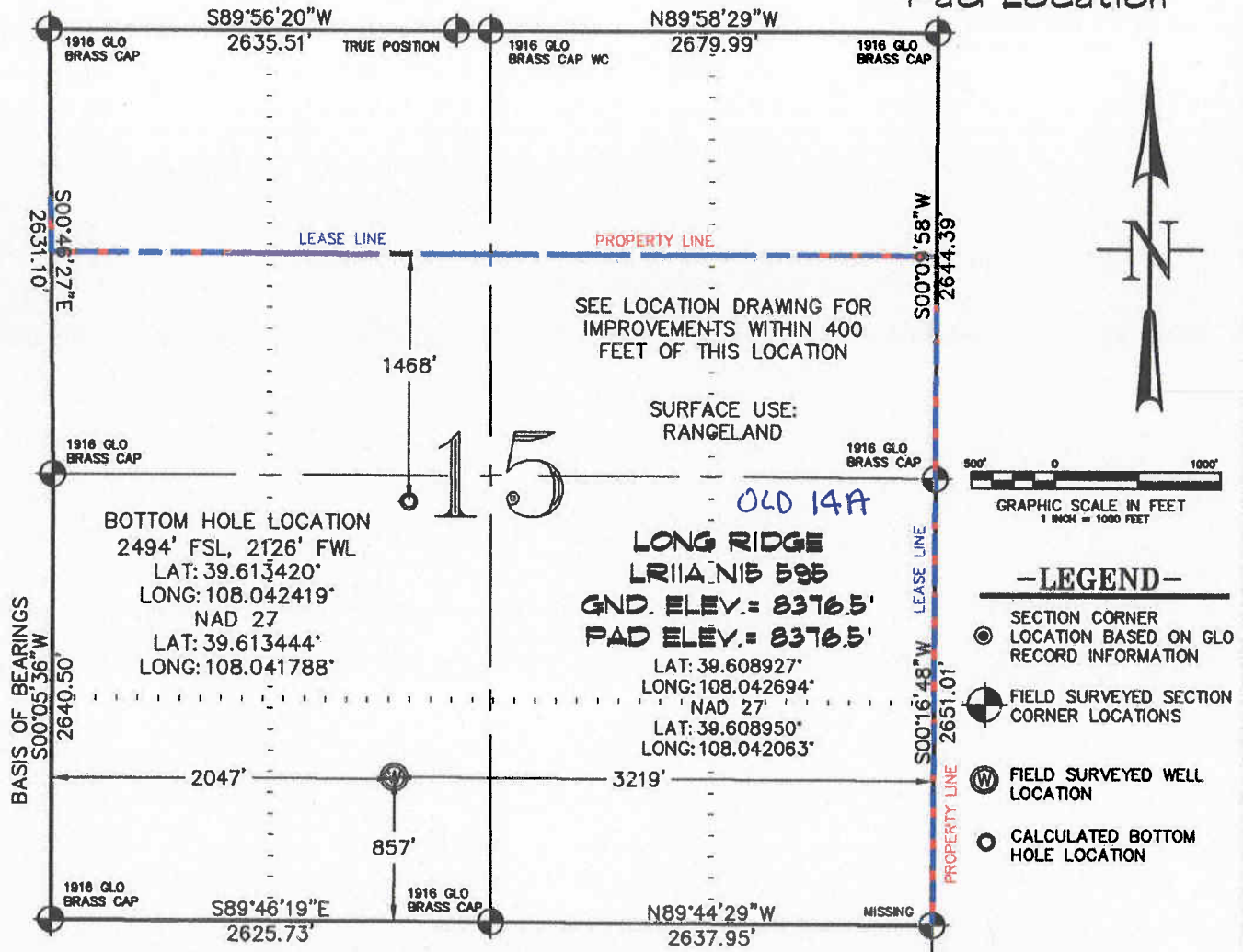


CONSTRUCTION SURVEYS, INC.
0012 SUNRISE BLVD.
SILT, CO 81652
(970) 876-5753

VIEW: 1E

SURVEYED: 06/22/10	SCALE: 1" = 1000'
DRAFTED: 07/01/10	DWG: Berry/LongRidgeN15-595.dwg
REVISED: 08/10/10	SHEET: 1 of 11

SEC. 15, T. 5 S., R. 95 W. OF THE 6TH P.M. Long Ridge N15-595
Pad Location



-LEGEND-

- ⊙ SECTION CORNER LOCATION BASED ON GLO RECORD INFORMATION
- ⊙ FIELD SURVEYED SECTION CORNER LOCATIONS
- ⊙ FIELD SURVEYED WELL LOCATION
- ⊙ CALCULATED BOTTOM HOLE LOCATION

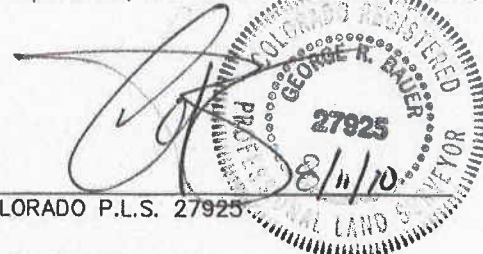
THIS WELL LOCATION PLAT WAS PREPARED FOR BERRY PETROLEUM COMPANY TO LOCATE THE LONG RIDGE LR11A N15 595 WELL, 857 FEET FROM THE SOUTH LINE AND 2047 FEET FROM THE WEST LINE IN THE SE1/4 SW1/4 OF SECTION 15, T. 5 S., R. 95 W. OF THE 6TH P.M. GARFIELD COUNTY, COLORADO.

REFERENCE NOTES

- 1) T. 5 S., R. 95 W., 6TH P.M. GLO PLAT.
- 2) U.S.G.S. QUAD: FORKED GULCH, CO
- 3) ELEVATIONS BASED ON N.A.V.D. 1988
- 4) LATITUDES AND LONGITUDES ARE BASED ON NAD 83, COLORADO CENTRAL ZONE.
- 5) GPS OPERATOR IVAN MARTIN, OBSERVED A PDOP OF 2.4.
- 6) ALL GPS OBSERVATIONS ARE IN COMPLIANCE WITH COGCC RULE NO. 215.
- 7) SURFACE AND BOTTOM HOLE LOCATIONS ARE MEASURED 90° FROM SECTION LINES.

SURVEYOR'S CERTIFICATE

I, George R. Bauer: a Professional Land Surveyor in the State of Colorado do hereby certify that this Survey was made under my direct supervision, and that this Plat represents said Survey.



COLORADO P.L.S. 27925

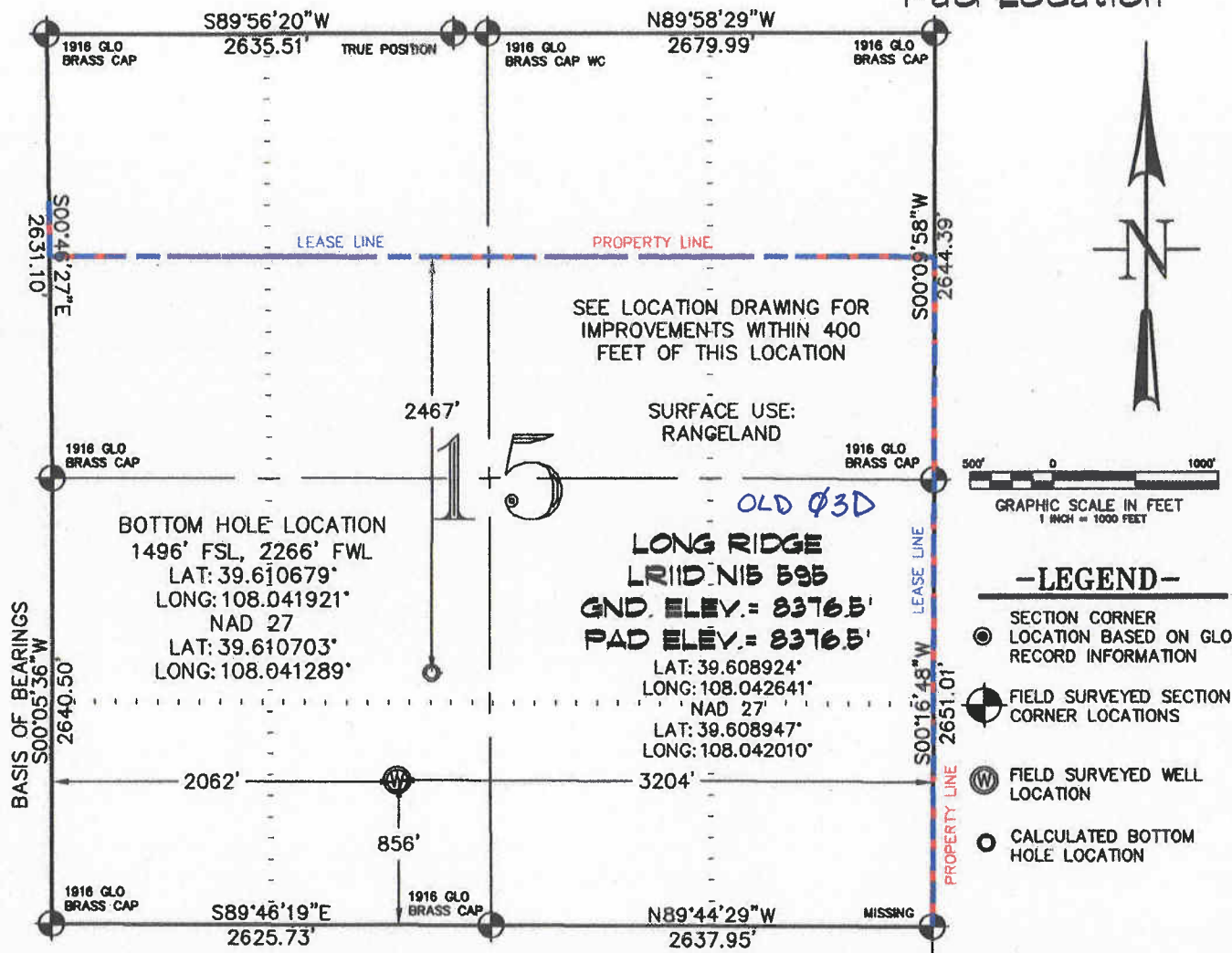


CONSTRUCTION SURVEYS, INC.
0012 SUNRISE BLVD.
SILT, CO 81652
(970)876-5753

VIEW: 1F

SURVEYED: 06/22/10	SCALE: 1" = 1000'
DRAFTED: 07/01/10	DWG: Berry/LongRidgeN15-595.dwg
REVISED: 08/10/10	SHEET: 1 of 11

SEC. 15, T. 5 S., R. 95 W. OF THE 6TH P.M. Long Ridge N15-595
Pad Location



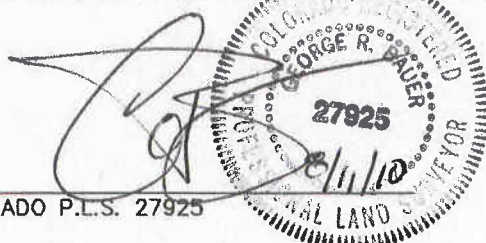
THIS WELL LOCATION PLAT WAS PREPARED FOR BERRY PETROLEUM COMPANY TO LOCATE THE LONG RIDGE LR11D N15 595 WELL, 856 FEET FROM THE SOUTH LINE AND 2062 FEET FROM THE WEST LINE IN THE SE1/4 SW1/4 OF SECTION 15, T. 5 S., R. 95 W. OF THE 6TH P.M. GARFIELD COUNTY, COLORADO.

REFERENCE NOTES

- 1) T. 5 S., R. 95 W., 6TH P.M. GLO PLAT.
- 2) U.S.G.S. QUAD: FORKED GULCH, CO
- 3) ELEVATIONS BASED ON N.A.V.D. 1988
- 4) LATITUDES AND LONGITUDES ARE BASED ON NAD 83, COLORADO CENTRAL ZONE.
- 5) GPS OPERATOR IVAN MARTIN, OBSERVED A PDOP OF 2.4.
- 6) ALL GPS OBSERVATIONS ARE IN COMPLIANCE WITH COGCC RULE NO. 215.
- 7) SURFACE AND BOTTOM HOLE LOCATIONS ARE MEASURED 90° FROM SECTION LINES.

SURVEYOR'S CERTIFICATE

I, George R. Bauer: a Professional Land Surveyor in the State of Colorado do hereby certify that this Survey was made under my direct supervision, and that this Plat represents said Survey.



COLORADO P.L.S. 27925



CONSTRUCTION SURVEYS, INC.

2012 SUNRISE BLVD.

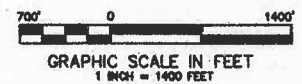
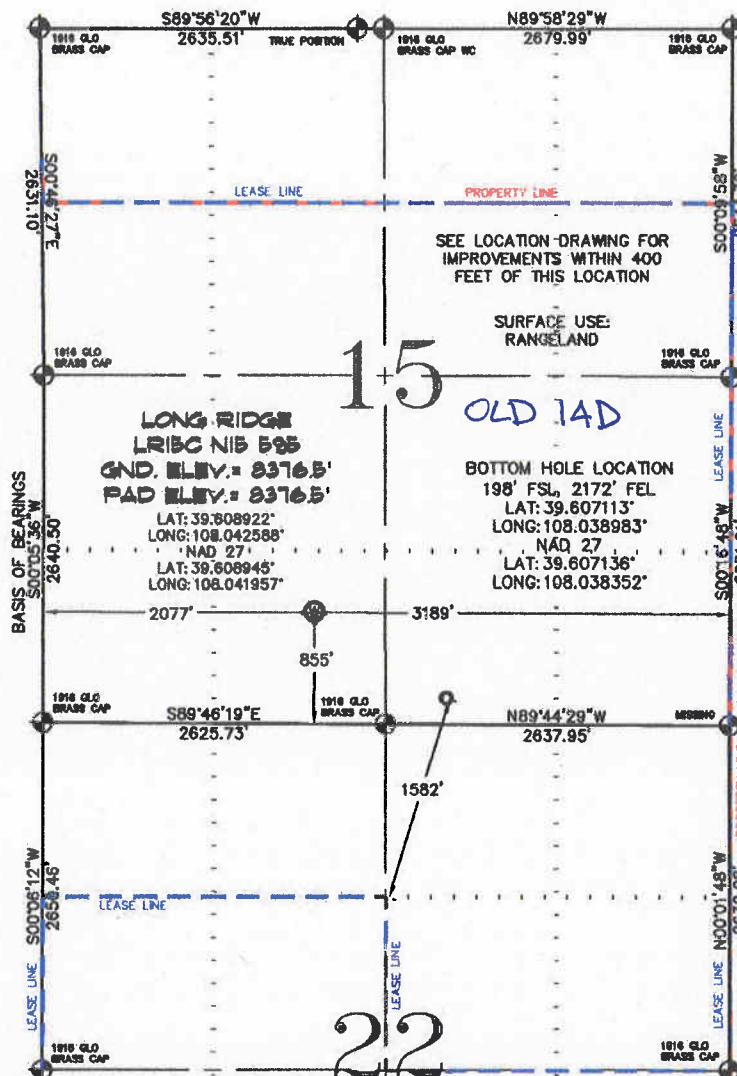
SILT, CO 81652

(970)876-5753

VIEW: 1G

SURVEYED: 06/22/10	SCALE: 1" = 1000'
DRAFTED: 07/01/10	DWG: Berry/LongRidgeN15-595.dwg
REVISED: 08/10/10	SHEET: 1 of 11

SEC. 15, T. 5 S., R. 95 W. OF THE 6TH P.M. Long Ridge N15-595
Pad Location



-LEGEND-

- SECTION CORNER
LOCATION BASED ON GLO
RECORD INFORMATION
- ⊕ FIELD SURVEYED SECTION
CORNER LOCATIONS
- ⊙ FIELD SURVEYED WELL
LOCATION
- ⊙ CALCULATED BOTTOM
HOLE LOCATION

THIS WELL LOCATION PLAT WAS PREPARED FOR BERRY PETROLEUM COMPANY TO LOCATE THE LONG RIDGE LR15C N15 595 WELL, 855 FEET FROM THE SOUTH LINE AND 2077 FEET FROM THE WEST LINE IN THE SE1/4 SW1/4 OF SECTION 15, T. 5 S., R. 95 W. OF THE 6TH P.M. GARFIELD COUNTY, COLORADO.

REFERENCE NOTES

- 1) T. 5 S., R. 95 W., 6TH P.M. GLO PLAT.
- 2) U.S.G.S. QUAD: FORKED GULCH, CO
- 3) ELEVATIONS BASED ON N.A.V.D. 1988
- 4) LATITUDES AND LONGITUDES ARE BASED ON NAD 83, COLORADO CENTRAL ZONE.
- 5) GPS OPERATOR IVAN MARTIN, OBSERVED A PDOP OF 2.4.
- 6) ALL GPS OBSERVATIONS ARE IN COMPLIANCE WITH COGCC RULE NO. 215.
- 7) SURFACE AND BOTTOM HOLE LOCATIONS ARE MEASURED 90° FROM SECTION LINES.

SURVEYOR'S CERTIFICATE

I, George R. Bauer: a Professional Land Surveyor in the State of Colorado do hereby certify that this Survey was made under my direct supervision, and that this Plat represents said Survey.

George R. Bauer
COLORADO P.L.S. 27925
PROFESSIONAL LAND SURVEYOR
8/11/10

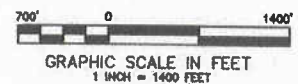
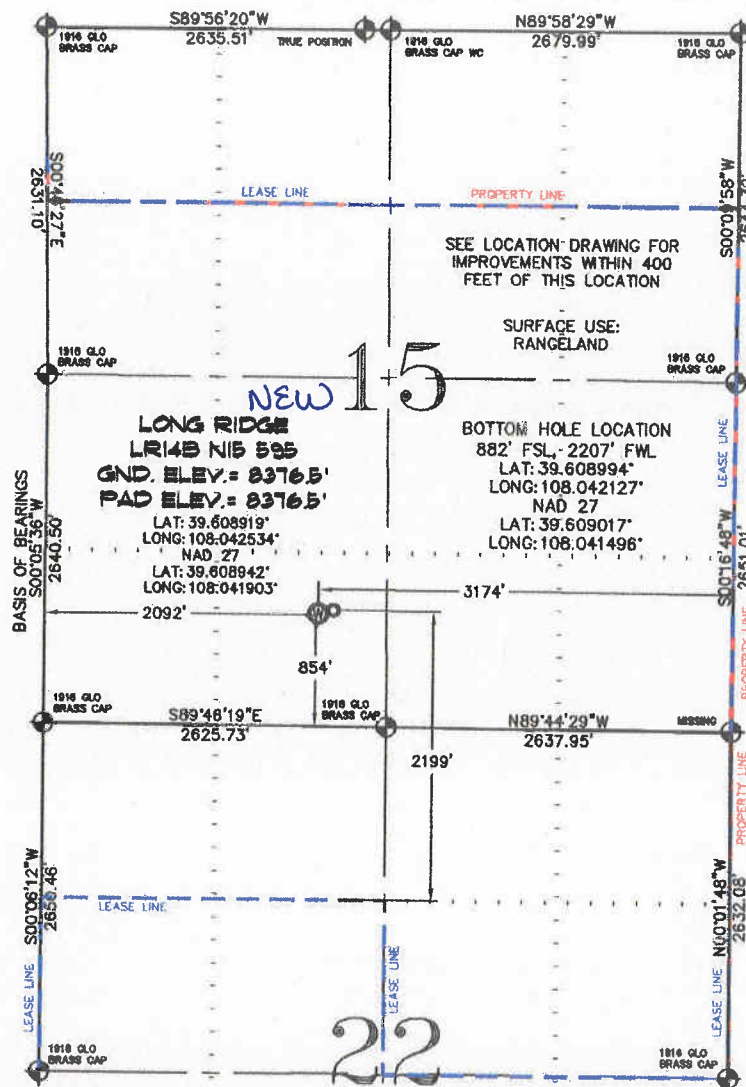


CONSTRUCTION SURVEYS, INC.
0012 SUNRISE BLVD.
SILT, CO 81652
(970)876-5753

VIEW: 1H

SURVEYED: 06/22/10	SCALE: 1" = 1400'
DRAFTED: 07/01/10	DWG: Berry/LongRidgeN15-595.dwg
REVISED: 08/10/10	SHEET: 1 of 11

SEC. 15, T. 5 S., R. 95 W. OF THE 6TH P.M. Long Ridge N15-595
Pad Location



-LEGEND-

- SECTION CORNER
- LOCATION BASED ON GLO RECORD INFORMATION
- ⊕ FIELD SURVEYED SECTION CORNER LOCATIONS
- ⊕ FIELD SURVEYED WELL LOCATION
- ⊕ CALCULATED BOTTOM HOLE LOCATION

THIS WELL LOCATION PLAT WAS PREPARED FOR BERRY PETROLEUM COMPANY TO LOCATE THE LONG RIDGE LR14B N15 595 WELL, 854 FEET FROM THE SOUTH LINE AND 2092 FEET FROM THE WEST LINE IN THE SE1/4 SW1/4 OF SECTION 15, T. 5 S., R. 95 W. OF THE 6TH P.M. GARFIELD COUNTY, COLORADO.

REFERENCE NOTES

- 1) T. 5 S., R. 95 W., 6TH P.M. GLO PLAT.
- 2) U.S.G.S. QUAD: FORKED GULCH, CO
- 3) ELEVATIONS BASED ON N.A.V.D. 1988
- 4) LATITUDES AND LONGITUDES ARE BASED ON NAD 83, COLORADO CENTRAL ZONE.
- 5) GPS OPERATOR IVAN MARTIN, OBSERVED A PDOP OF 2.4.
- 6) ALL GPS OBSERVATIONS ARE IN COMPLIANCE WITH COGCC RULE NO. 215.
- 7) SURFACE AND BOTTOM HOLE LOCATIONS ARE MEASURED 90° FROM SECTION LINES.

SURVEYOR'S CERTIFICATE

I, George R. Bauer: a Professional Land Surveyor in the State of Colorado do hereby certify that this Survey was made under my direct supervision, and that this Plat represents said Survey.

COLORADO P.L.S. 27925



CONSTRUCTION SURVEYS, INC.
0012 SUNRISE BLVD.
SILT, CO 81652
(970)876-5753

VIEW: 11

SURVEYED: 06/22/10	SCALE: 1" = 1400'
DRAFTED: 07/01/10	DWG: Berry/LongRidgeN15-595.dwg
REVISED: 08/10/10	SHEET: 1 of 11