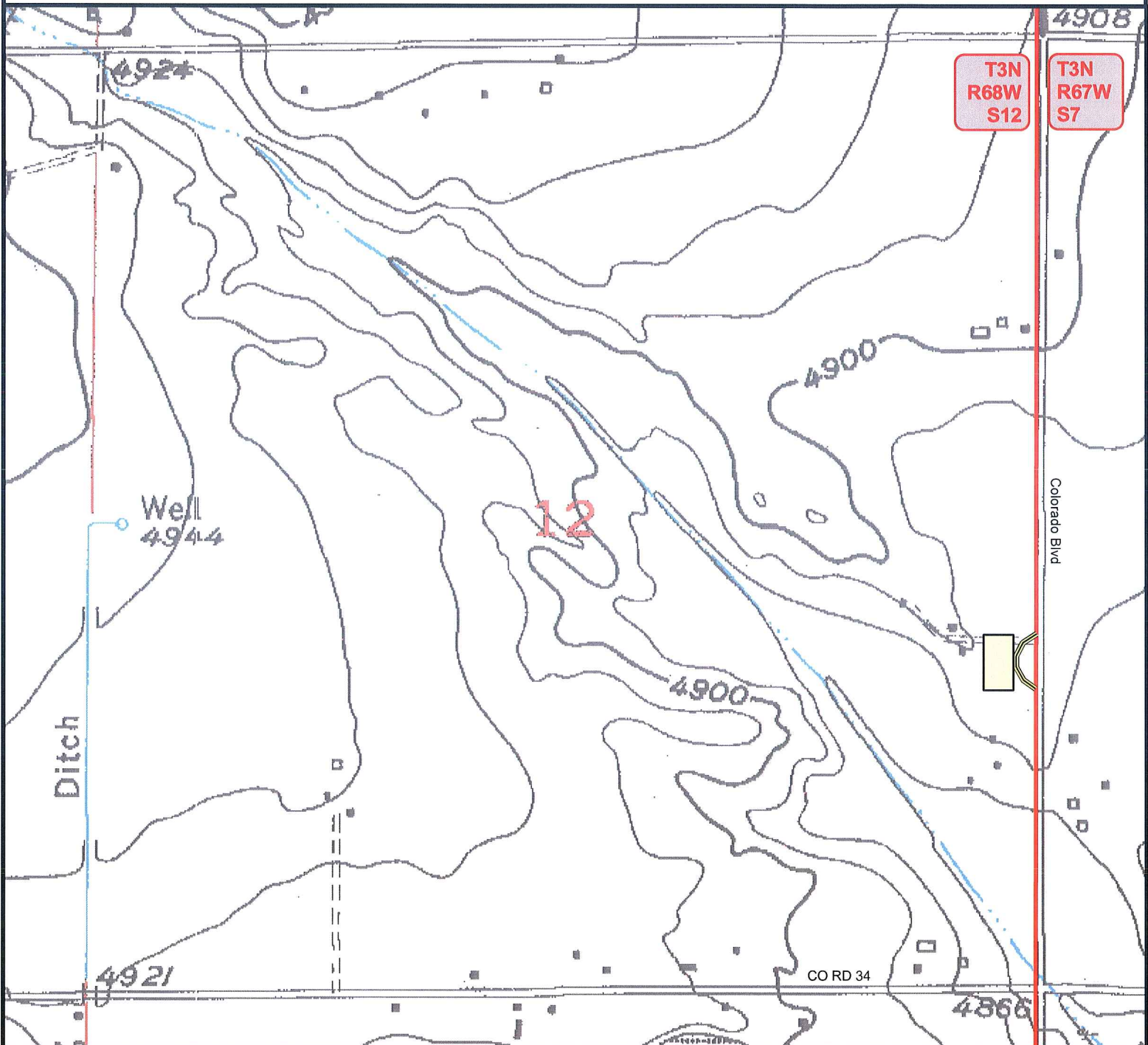


# Access Road Exhibit MARTIN Facility

SECTION 12, TOWNSHIP 3 NORTH, RANGE 68 WEST OF THE 6TH PRINCIPAL MERIDIAN



Proposed Access to MARTIN Facility: From the junction of Colorado Blvd. and Weld City Rd 34, head north on Colorado Blvd. approximately 4/10 mile. Access is on west side of Colorado Blvd.

**\*\* Size of proposed facility has been exaggerated to be visible at this scale \*\***



## Legend

- Proposed MARTIN Facility
- Proposed Access Route
- Township Boundary

## Reference Location

\*\* All Measurements are Made from Reference Point ★ (NAD 83)\*\*

LAT: 40.238644° LONG: -104.942175°



Use our resources to find yours!  
[www.petro-fs.com](http://www.petro-fs.com)  
(303) 928-7128

Field Date: 07/16/2010  
Drafting Date: 08/14/2010  
Drafter: DMM  
Checked By: BHF

Data Sources:  
Topographic maps courtesy of USGS

Prepared for:

