

REFERENCE AREA MAP

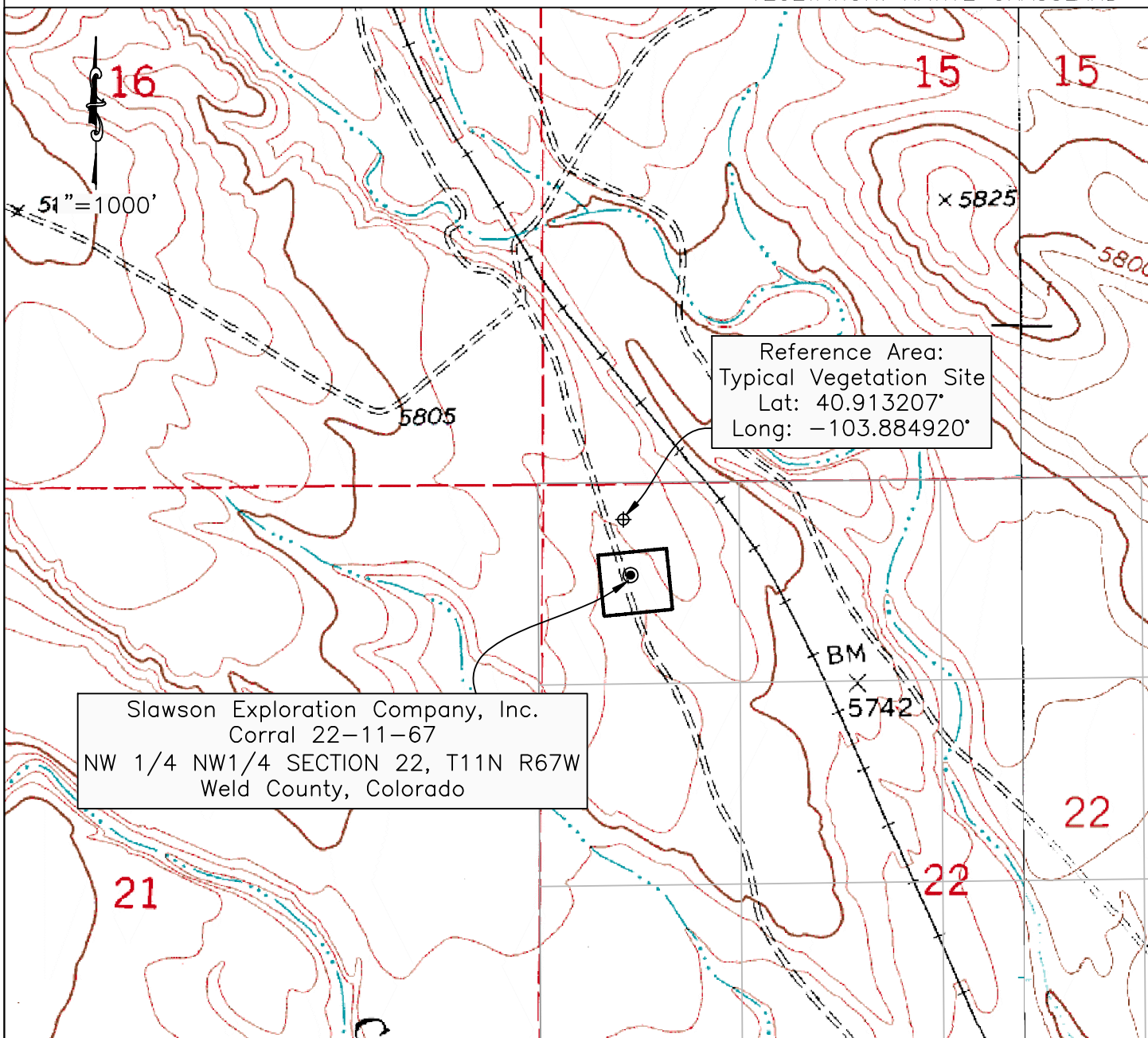
Western Land Surveying of Sheridan, Wyoming, in accordance with a request from Slawson Exploration Company, Inc., has determined the location of Corral 22-11-67 to be 605 feet FNL, and 605 feet FWL, (90° off Section Lines) of Section 22, Township 11 North, Range 67 West, of the 6th Principal Meridian, Weld County, Colorado.

Date: Staked on 5/27/2010, drawn on 7/27/2010

Staked by: Nick Roadifer

Drawn by: Heather Hairston

SURFACE USE: RANGELAND  
VEGETATION: NATIVE GRASSLAND



Slawson Exploration Company, Inc.  
Corral 22-11-67  
NW 1/4 NW1/4 SECTION 22, T11N R67W  
Weld County, Colorado

Reference Area:  
Typical Vegetation Site  
Lat: 40.913207°  
Long: -103.884920°

  
**WESTERN LAND SERVICES**  
Sheridan, WY 82801 (307)673-1817  
DP: L:\Slawson\Permitting\_Packets\Corral\_22\_Date: 7/27/2010

Slawson Exploration Company, Inc.  
Corral 22-11-67  
SL: NW 1/4 NW1/4 SECTION 22, T11N R67W  
BL: SE 1/4 NE1/4 SECTION 22, T11N R67W  
6TH PM, WELD COUNTY, COLORADO