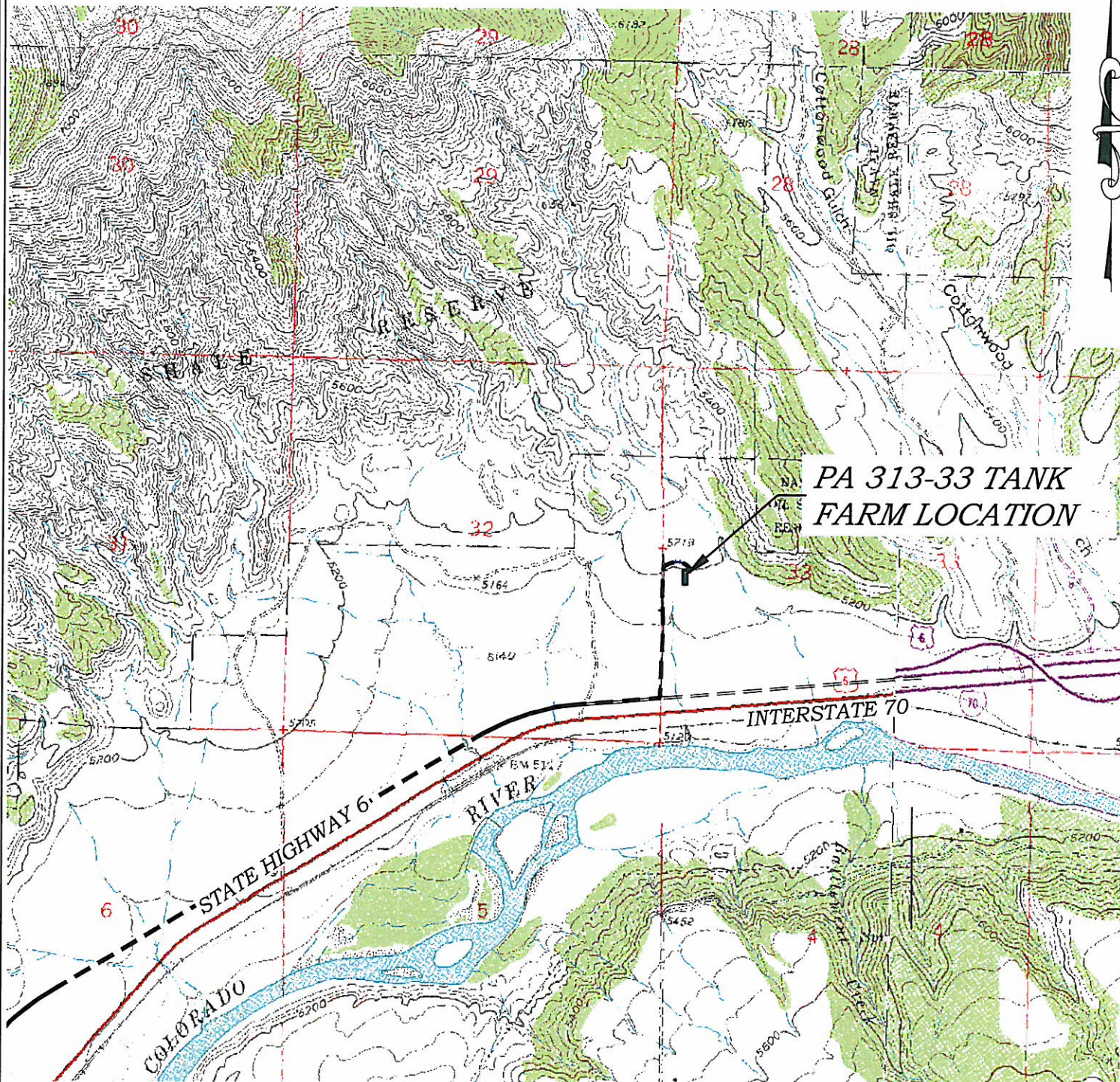


Section 33
T. 6 S., R. 95 W



PA 313-33 TANK
FARM LOCATION

INTERSTATE 70

STATE HIGHWAY 6

COLORADO
RIVER

1000 0 2000
GRAPHIC SCALE IN FEET
1 INCH = 2000 FEET

ACCESS DESCRIPTION:

FROM THE INTERSECTION OF COUNTY ROAD 215 AND I-70 FRONTAGE ROAD (STATE HIGHWAY 6) NORTH OF THE PARACHUTE I-70 OVERPASS, PROCEED IN A NORTHWESTERLY DIRECTION ALONG STATE HIGHWAY 6, ± 2.5 MILES TO AN INTERSECTION WITH A DIRT/GRAVEL ROAD, PROCEED LEFT IN A NORTHERLY DIRECTION ± 0.4 MILES THE EXISTING PA 313-33 DRILL PAD LOCATION, AS SHOWN HEREON.

TOPO MAP

Construction Plan Prepared for:

Williams Williams Production, RMT

PA 313-33 Tank Farm

ACCESS ROAD MAP

SCALE: 1" = 2000'
DATE: 5/7/10
PLAT: 3 of 4
PROJECT: Williams Valley
DFT: cws

136 East Third Street
Rifle, Colorado 81650
Ph. (970) 625-1330
Fax (970) 625-2773



BOOKCLIFF
Survey Services, Inc.