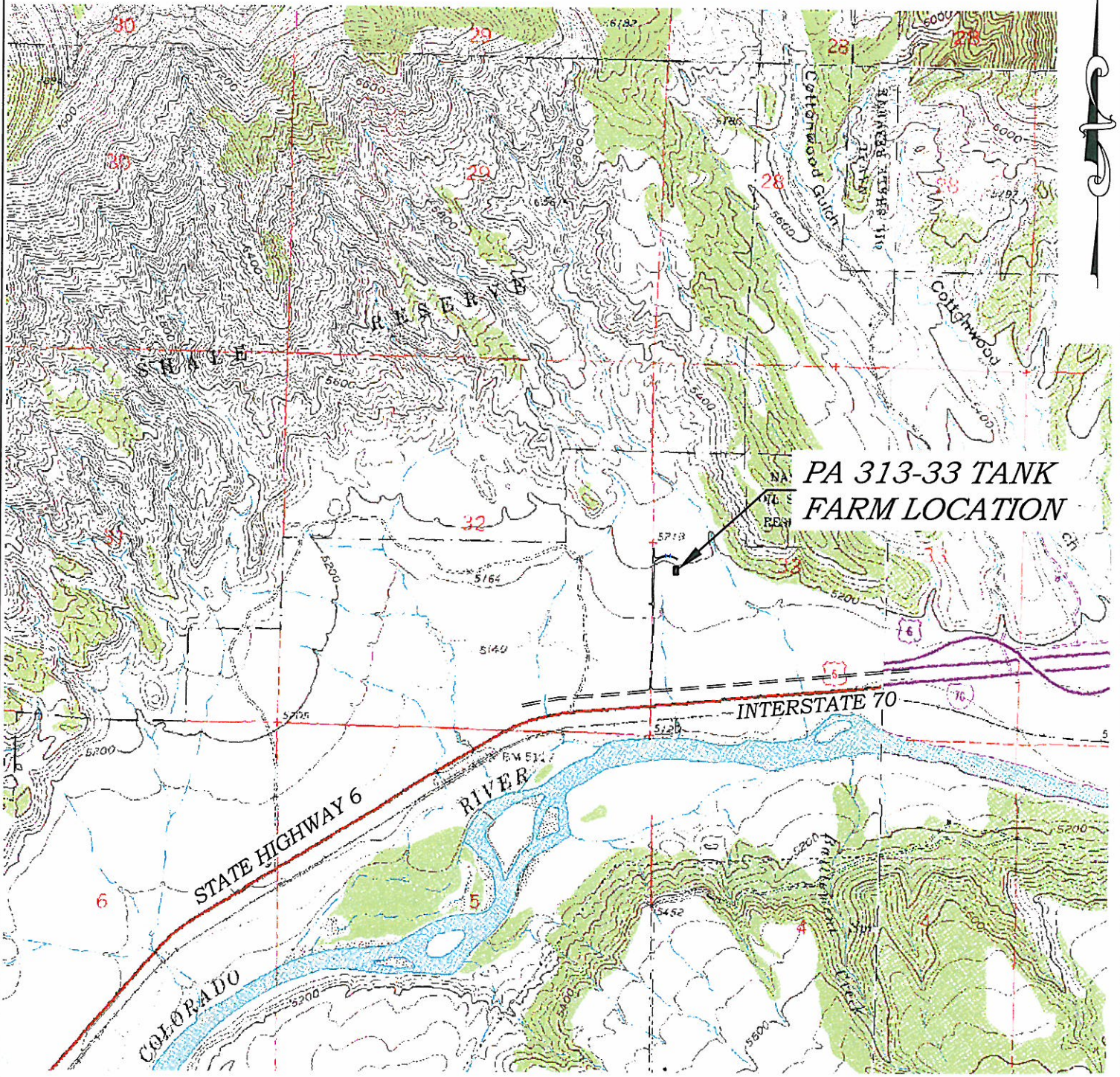


Section 33
T. 6 S., R. 95 W



ACCESS DESCRIPTION:
FROM THE INTERSECTION OF COUNTY ROAD 215 AND I-70 FRONTAGE ROAD (STATE HIGHWAY 6) NORTH OF THE PARACHUTE I-70 OVERPASS, PROCEED IN A NORTHWESTERLY DIRECTION ALONG STATE HIGHWAY 6, ±2.5 MILES TO AN INTERSECTION WITH A DIRT/GRAVEL ROAD, PROCEED LEFT IN A NORTHERLY DIRECTION ±0.4 MILES THE EXISTING PA 313-33 DRILL PAD LOCATION, AS SHOWN HEREON.

REVISED: 5/24/10

SCALE: 1" = 2000'
DATE: 5/7/10
PLAT: 3 of 4
PROJECT: Williams Valley
DFT: cws

Construction Plan Prepared for:
Williams Williams Production, RMT
PA 313-33 Tank Farm
ACCESS ROAD MAP

5/20/10 Williams Valley/PA 313-33 Tank Facility/PA 313-33.dwg, 5/24/2010 12:16:27 PM

136 East Third Street
Rifle, Colorado 81650
Ph. (970) 625-1330
Fax (970) 625-2773

