

WELL LOCATION CERTIFICATE

THIS MAP IS A GIS EXHIBIT AND DOES NOT REPRESENT A BOUNDARY SURVEY.

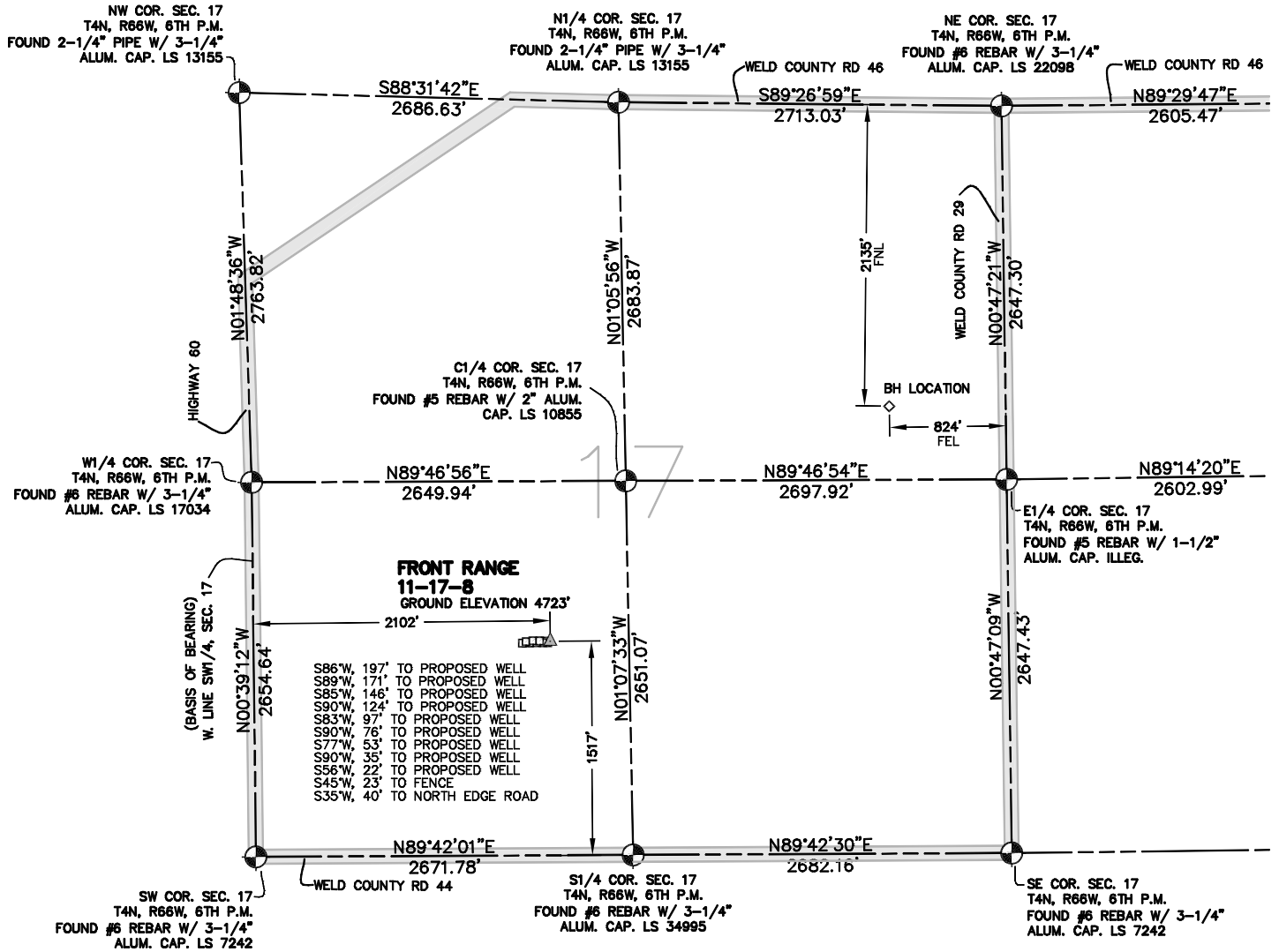


EXHIBIT MAP



WELL LOCATION CERTIFICATE

IN ACCORDANCE WITH A REQUEST FROM SHERRY GLASS OF KP KAUFFMAN INC., CIVIL ARTS-DREXEL GROUP, INC. HAS DETERMINED THE LOCATION OF FRONT RANGE 11-17-8 WELL SITE TO BE 2102' FWL AND 1517' FSL AS MEASURED AT NINETY (90) DEGREES FROM THE SECTION LINES OF SECTION 17, T4N, R66W, OF THE 6TH P.M., WELD COUNTY, CO.

LEGEND

- = FOUND SURVEY MONUMENT
- = ROAD
- (C) = CALCULATED DIMENSION
- ▲ = PROPOSED WELL LOCATION
- ◇ = BOTTOM OF HOLE LOCATION
- = OTHER PROPOSED WELL LOCATION
- = EXISTING WELL LOCATION

NOTES

- BEARINGS SHOWN ON THIS MAP ARE BASED UPON GPS OBSERVATIONS MADE ON 03/01/2010 BY KIPPER GOLDSBERRY BETWEEN THE SOUTHWEST CORNER AND THE W1/4 CORNER OF SECTION 17, T4N, R66W, OF THE 6TH P.M., HAVING A BEARING OF N00°39'12"W, AS MONUMENTED AND SHOWN HEREON.
- ELEVATIONS ARE BASED UPON NAVD 88 DATUM.
- THE LOCATION FALLS IN AN AGRICULTURAL FIELD.

PROPOSED SURFACE HOLE DATA

(NAD 83)
LATITUDE: 40.30857 N
LONGITUDE: 104.80353 W
PDOP: <6

I HEREBY CERTIFY THAT THIS WELL LOCATION CERTIFICATE WAS PREPARED UNDER MY RESPONSIBLE CHARGE ON 04/12/2010 FOR AND ON BEHALF OF KP KAUFFMAN, INC. THAT IT IS NOT A LAND SURVEY PLAT OR AN IMPROVEMENT SURVEY PLAT, AND THAT IT IS NOT TO BE RELIED UPON FOR ESTABLISHMENT OF FENCE, BUILDING, OR OTHER FUTURE IMPROVEMENT LINES.

PETER D. STEGER
COLORADO REGISTERED PROFESSIONAL
LAND SURVEYOR NO. 25379

DATE: APRIL 12, 2010



ENGINEERING PLANNING SURVEYING
1860 Lefthand Circle, Suite A
Longmont, CO 80501
P 303.682.1131
F 303.682.1149