

# WELL LOCATION CERTIFICATE

THIS MAP IS A GIS EXHIBIT AND DOES NOT REPRESENT A BOUNDARY SURVEY.

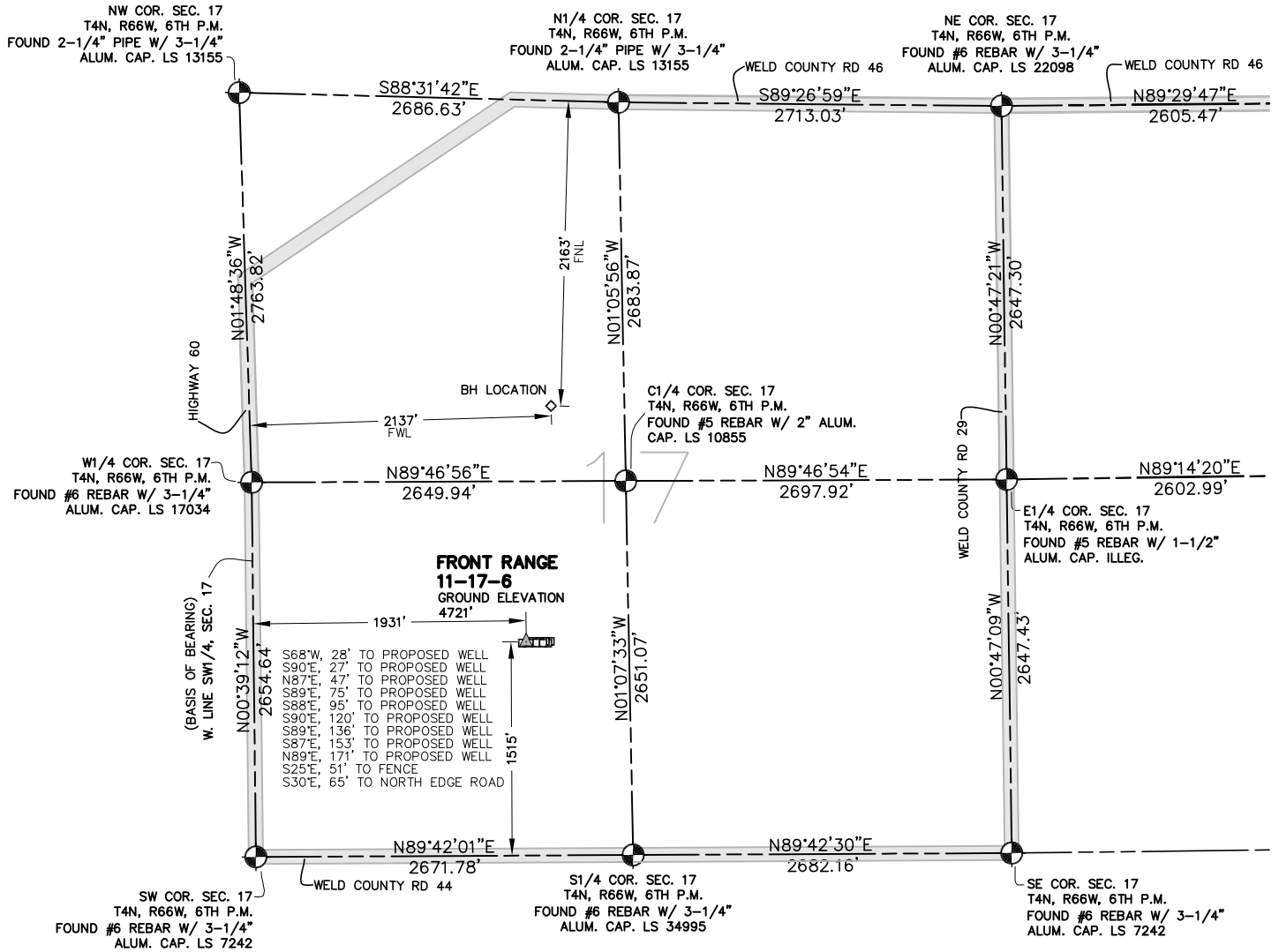


EXHIBIT MAP



## WELL LOCATION CERTIFICATE

IN ACCORDANCE WITH A REQUEST FROM SHERRY GLASS OF KP KAUFFMAN INC., CIVIL ARTS-DREXEL GROUP, INC. HAS DETERMINED THE LOCATION OF FRONT RANGE 11-17-6 WELL SITE TO BE 1931' FWL AND 1515' FSL AS MEASURED AT NINETY (90) DEGREES FROM THE SECTION LINES OF SECTION 17, T4N, R66W, OF THE 6TH P.M., WELD COUNTY, CO.

## LEGEND

- = FOUND SURVEY MONUMENT
- = ROAD
- (C) = CALCULATED DIMENSION
- ▲ = PROPOSED WELL LOCATION
- ◇ = BOTTOM OF HOLE LOCATION
- = OTHER PROPOSED WELL LOCATION
- = EXISTING WELL LOCATION

## NOTES

1. BEARINGS SHOWN ON THIS MAP ARE BASED UPON GPS OBSERVATIONS MADE ON 03/01/2010 BY KIPPER GOLDSBERRY BETWEEN THE SOUTHWEST CORNER AND THE W1/4 CORNER OF SECTION 17, T4N, R66W, OF THE 6TH P.M., HAVING A BEARING OF N00°39'12"W, AS MONUMENTED AND SHOWN HEREON.
2. ELEVATIONS ARE BASED UPON NAVD 88 DATUM.
3. THE LOCATION FALLS IN AN AGRICULTURAL FIELD.

## PROPOSED SURFACE HOLE DATA

(NAD 83)  
 LATITUDE: 40.30857 N  
 LONGITUDE: 104.80414 W  
 PDOP: <6

I HEREBY CERTIFY THAT THIS WELL LOCATION CERTIFICATE WAS PREPARED UNDER MY RESPONSIBLE CHARGE ON 04/12/2010 FOR AND ON BEHALF OF KP KAUFFMAN, INC. THAT IT IS NOT A LAND SURVEY PLAT OR AN IMPROVEMENT SURVEY PLAT, AND THAT IT IS NOT TO BE RELIED UPON FOR ESTABLISHMENT OF FENCE, BUILDING OR OTHER FUTURE IMPROVEMENT LINES.

PETER D. STEGER  
 COLORADO REGISTERED PROFESSIONAL  
 LAND SURVEYOR NO. 25379

DATE: APRIL 12, 2010



ENGINEERING PLANNING SURVEYING  
 1860 Lefthand Circle, Suite A  
 Longmont, CO 80501  
 P 303.682.1131  
 F 303.682.1149