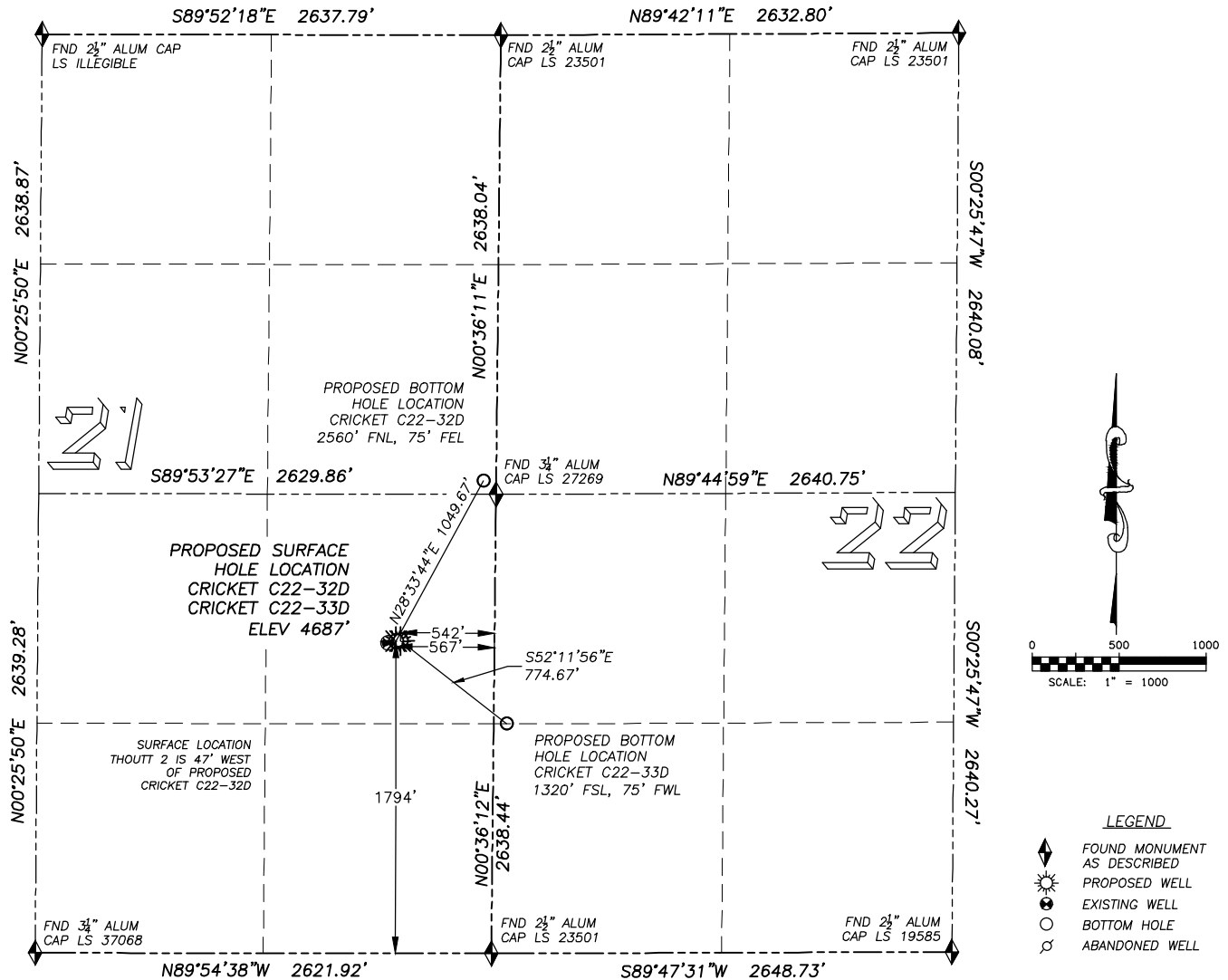


DIRECTIONAL LAYOUT CRICKET C22-32D & CRICKET C22-33D

SECTION 21, TOWNSHIP 4 NORTH, RANGE 64 WEST OF THE 6TH PRINCIPAL MERIDIAN

**NAD 83 LATITUDE AND LONGITUDE****CRICKET C22-32D SURFACE HOLE:**

LATITUDE: N40.29560°
 LONGITUDE: W104.54840°
 ELEVATION: 4687'
 PDOP 2.4
 1794' FSL, 567' FEL

BOTTOM HOLE:

LATITUDE: N40.29813°
 LONGITUDE: W104.54660°
 2560' FSL, 75' FEL SEC. 21

NEAREST EXISTING WELL:

THOUTT 2 SURFACE HOLE
 LATITUDE: N40.29557°
 LONGITUDE: W104.54857°
 ELEVATION: 4688'
 47' WEST

NAD 83 LATITUDE AND LONGITUDE**CRICKET C22-33D SURFACE HOLE:**

LATITUDE: N40.29560°
 LONGITUDE: W104.54831°
 ELEVATION: 4687'
 PDOP 1.7
 1794' FSL, 542' FEL

BOTTOM HOLE:

LATITUDE: N40.29429°
 LONGITUDE: W104.54612°
 1320' FSL, 75' FWL SEC. 22

NEAREST EXISTING WELL:

THOUTT 2 SURFACE HOLE
 LATITUDE: N40.29557°
 LONGITUDE: W104.54857°
 ELEVATION: 4688'
 72' WEST