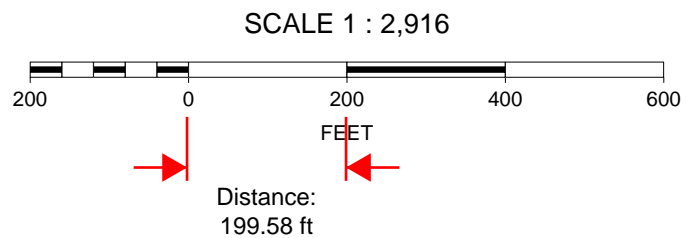
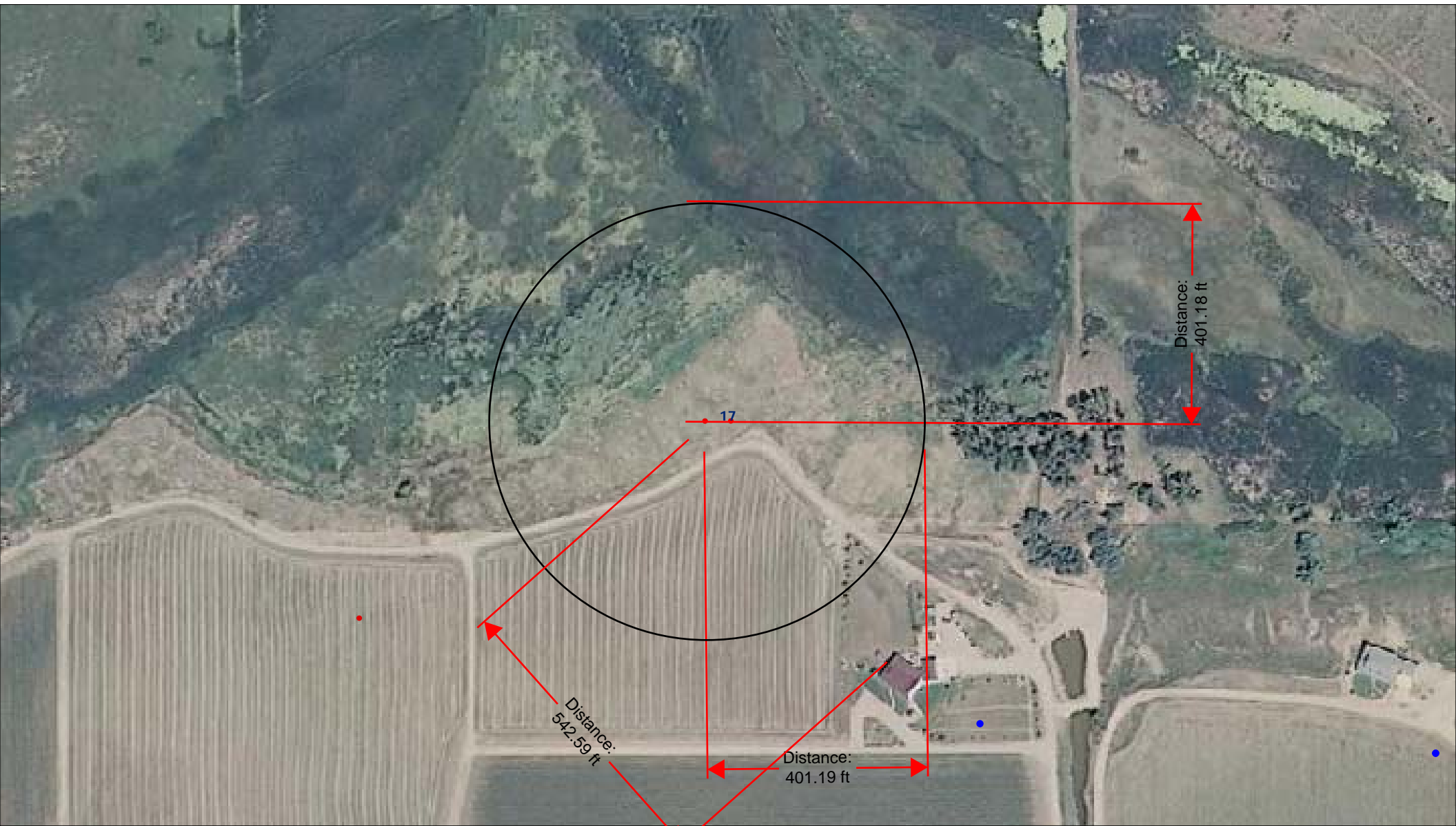


The only improvement in this area to date is an access road to agricultural fields. House in the SE portion of the map has access from the south (WCR 44) and has signed an access agreement for the access road with KPK.



K. P. Kauffman Company, Inc.
Well location map; visible improvements in 400'
Front Range #11-17 pad
NESW section 17-T4N-R66W
Weld Co., Colorado

