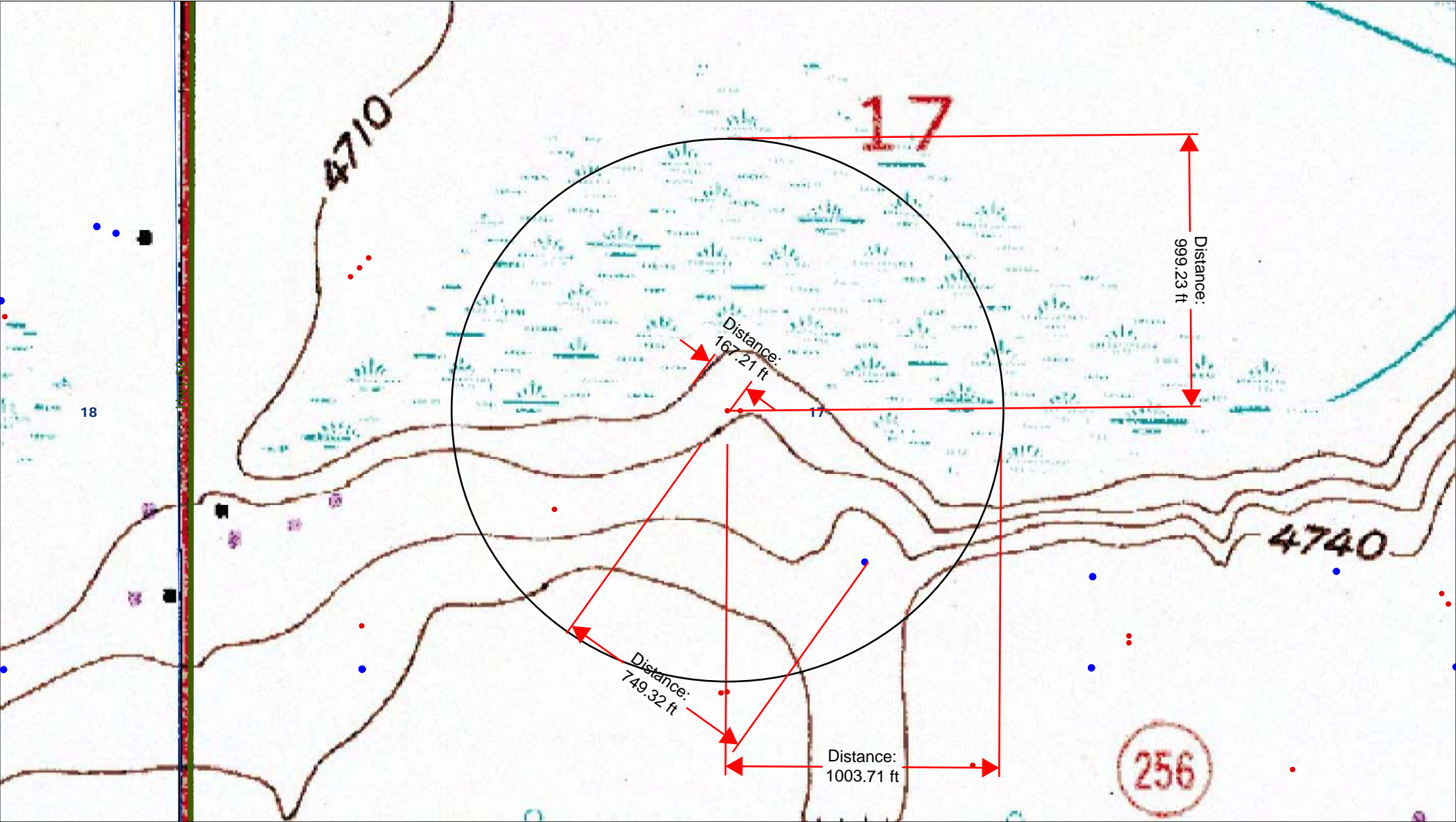
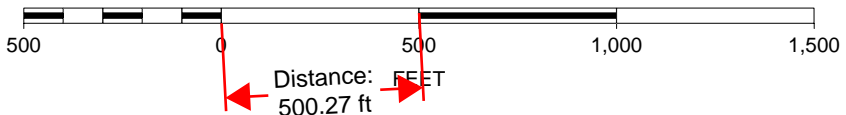


A. Domestic water well bearing SE at 749.32 feet; wetlands at toe of slope bearing NW at 167 feet; So. Platte River bearing W at 2,939 feet



SCALE 1 : 5,831



K. P. Kauffman Company, Inc.
Hydrology map; surface waters and water wells
Front Range #11-17- pad
NESW section 17-T4N-R66W
Weld Co., Colorado

