

**HALLIBURTON**

---

# **ANADARKO PETROLEUM CORP - EBUS**

---

**1415 Corporation GU D #2  
WATTENBERG  
Weld County , Colorado**

## **Squeeze Hole in Casing** **19-Jul-2010**

### **Job Site Documents**

*The Road to Excellence Starts with Safety*

<b>Sold To #:</b> 300466	<b>Ship To #:</b> 2794634	<b>Quote #:</b>	<b>Sales Order #:</b> 7509734
<b>Customer:</b> ANADARKO PETROLEUM CORP - EBUS		<b>Customer Rep:</b> Nail, Kenny	
<b>Well Name:</b> 1415 Corporation GU		<b>Well #:</b> D #2	<b>API/UWI #:</b> 05-123-09971-00
<b>Field:</b> WATTENBERG	<b>City (SAP):</b> FORT LUPTON	<b>County/Parish:</b> Weld	<b>State:</b> Colorado
<b>Contractor:</b> Ensign		<b>Rig/Platform Name/Num:</b> 322	
<b>Job Purpose:</b> Squeeze Hole in Casing			
<b>Well Type:</b> Producing Well		<b>Job Type:</b> Squeeze Hole in Casing	
<b>Sales Person:</b> FLING, MATTHEW		<b>Srv Supervisor:</b> SIMS, DENNIS	<b>MBU ID Emp #:</b> 158880

**Job Personnel**

HES Emp Name	Exp Hrs	Emp #	HES Emp Name	Exp Hrs	Emp #	HES Emp Name	Exp Hrs	Emp #
AARON, WESLEY J	2	403606	FLYNN, SHAD Michael	2	476484	OLSON, NICHOLAS Martin	2	470709
SIMS, DENNIS A	2	158880	SIPNEFSKI, ROBERT Anthony	2	419391			

**Equipment**

HES Unit #	Distance-1 way	HES Unit #	Distance-1 way	HES Unit #	Distance-1 way	HES Unit #	Distance-1 way
10948695	25 mile	11036298	25 mile	11410470C	25 mile		

**Job Hours**

Date	On Location Hours	Operating Hours	Date	On Location Hours	Operating Hours	Date	On Location Hours	Operating Hours
7/19/2010	3	1						

**TOTAL** Total is the sum of each column separately

**Job**

**Job Times**

Job Details						Job Times				
Formation Name							Date	Time	Time Zone	
Formation Depth (MD)		Top			Bottom		Called Out	19 - Jul - 2010	05:00	MST
Form Type				BHST			On Location	19 - Jul - 2010	07:30	MST
Job depth MD		4460. ft		Job Depth TVD		4460. ft	Job Started	19 - Jul - 2010	08:16	MST
Water Depth				Wk Ht Above Floor			Job Completed	19 - Jul - 2010	08:54	MST
Perforation Depth (MD)		From	4,460.00 ft		To	4,461.00 ft	Departed Loc	19 - Jul - 2010	09:30	MST

**Well Data**

Description	New / Used	Max pressure psig	Size in	ID in	Weight lbm/ft	Thread	Grade	Top MD ft	Bottom MD ft	Top TVD ft	Bottom TVD ft
Casing	Used		4.5	4.	10.5				8115.		8115.
Tubing	Used		2.375	1.995	4.6				4183.		
Perforation Interval								4460.	4461.		

**Tools and Accessories**

Type	Size	Qty	Make	Depth	Type	Size	Qty	Make	Depth	Type	Size	Qty	Make
Guide Shoe					Packer					Top Plug			
Float Shoe					Bridge Plug					Bottom Plug			
Float Collar					Retainer					SSR plug set			
Insert Float										Plug Container			
Stage Tool										Centralizers			

**Miscellaneous Materials**

Gelling Agt	Conc	Surfactant	Conc	Acid Type	Qty	Conc	%
Treatment Fld	Conc	Inhibitor	Conc	Sand Type	Size	Qty	



Fluid Data									
Stage/Plug #: 1									
Fluid #	Stage Type	Fluid Name	Qty	Qty uom	Mixing Density lbm/gal	Yield ft <sup>3</sup> /sk	Mix Fluid Gal/sk	Rate bbl/min	Total Mix Fluid Gal/sk
1	15.8# Cement	CMT - PREMIUM - CLASS G, 94 LB SK (100003685)	80.0	sacks	15.8	1.16	4.98	2.0	4.98
	94 lbm	CMT - PREMIUM - CLASS G REG OR TYPE V, BULK (100003685)							
	0.25 lbm	POLY-E-FLAKE (101216940)							
	2 %	CALCIUM CHLORIDE, PELLET, 50 LB (101509387)							
	4.978 Gal	FRESH WATER							
Calculated Values		Pressures		Volumes					
Displacement		Shut In: Instant		Lost Returns		Cement Slurry		Pad	
Top Of Cement		5 Min		Cement Returns		Actual Displacement		Treatment	
Frac Gradient		15 Min		Spacers		Load and Breakdown		Total Job	
Rates									
Circulating		Mixing		Displacement		Avg. Job			
Cement Left In Pipe	Amount	66 ft	Reason	Shoe Joint					
Frac Ring # 1 @	ID	Frac ring # 2 @	ID	Frac Ring # 3 @	ID	Frac Ring # 4 @	ID		
The Information Stated Herein Is Correct				Customer Representative Signature					

*The Road to Excellence Starts with Safety*

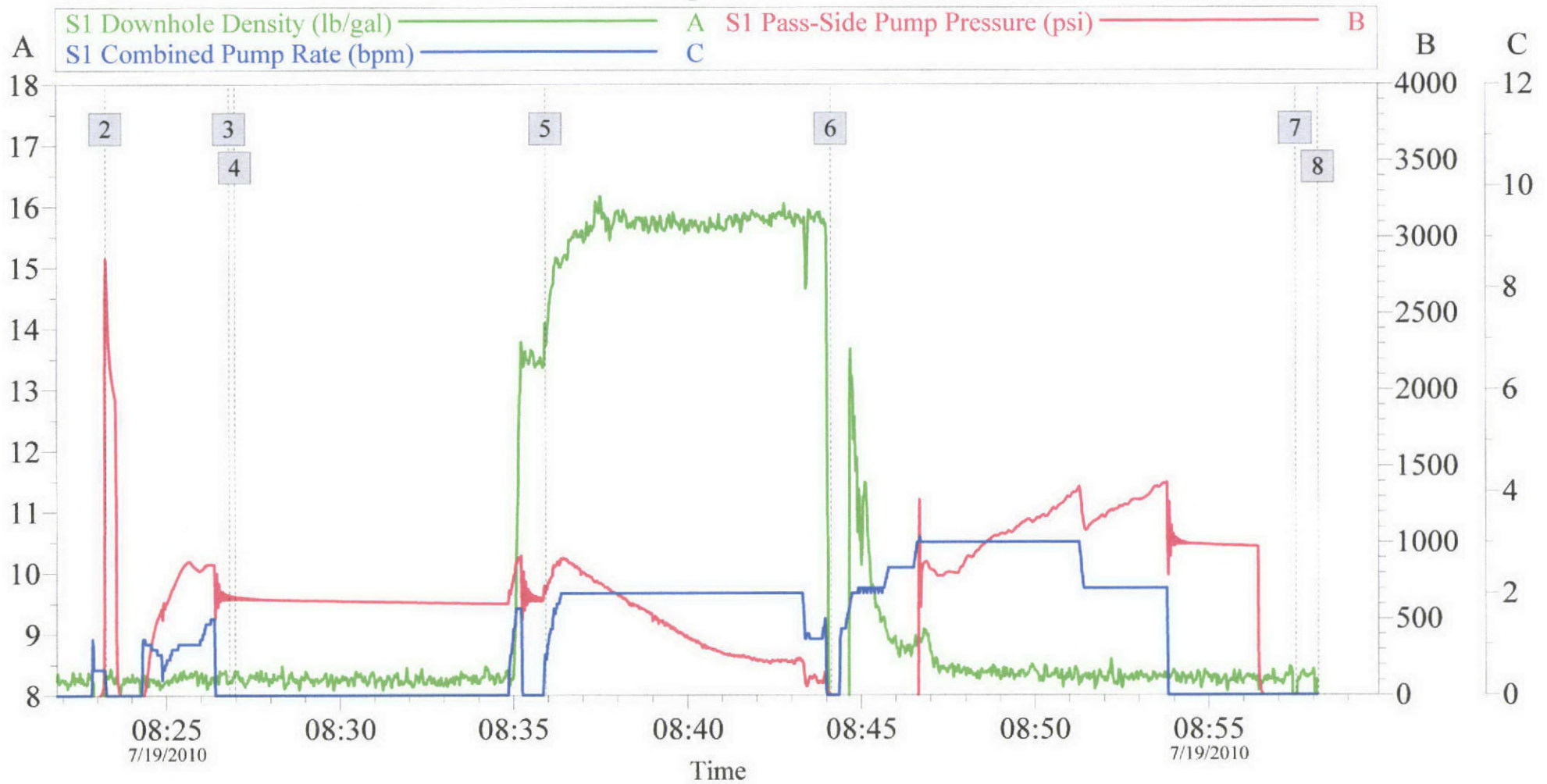
<b>Sold To #:</b> 300466	<b>Ship To #:</b> 2794634	<b>Quote #:</b>	<b>Sales Order #:</b> 7509734
<b>Customer:</b> ANADARKO PETROLEUM CORP - EBUS		<b>Customer Rep:</b> Naill, Kenny	
<b>Well Name:</b> 1415 Corporation GU		<b>Well #:</b> D #2	<b>API/UWI #:</b> 05-123-09971-00
<b>Field:</b> WATTENBERG	<b>City (SAP):</b> FORT LUPTON	<b>County/Parish:</b> Weld	<b>State:</b> Colorado
<b>Legal Description:</b>			
<b>Lat:</b> N 0 deg. OR N 0 deg. 0 min. 0 secs.		<b>Long:</b> E 0 deg. OR E 0 deg. 0 min. 0 secs.	
<b>Contractor:</b> Ensign		<b>Rig/Platform Name/Num:</b> 322	
<b>Job Purpose:</b> Squeeze Hole in Casing			<b>Ticket Amount:</b>
<b>Well Type:</b> Producing Well		<b>Job Type:</b> Squeeze Hole in Casing	
<b>Sales Person:</b> FLING, MATTHEW		<b>Srvc Supervisor:</b> SIMS, DENNIS	<b>MBU ID Emp #:</b> 158880

Activity Description	Date/Time	Cht #	Rate bbl/min	Volume bbl		Pressure psig		Comments
				Stage	Total	Tubing	Casing	
Arrive At Loc	07/19/2010 07:30							
Safety Meeting	07/19/2010 08:00							
Test Lines	07/19/2010 08:23						2843.0	
Injection Test	07/19/2010 08:24		2	0.5	0.5		800.0	Establish rate a 2 bpm with 800 psi
Pump Spacer	07/19/2010 08:26		2	3	3.5		637.0	Pump Fresh Water Spacer with water provided by rig
Pump Cement	07/19/2010 08:35		2	16	19.5		686.0	80 sks (16.3 bbls) 15.8 ppg Hal Cem B1 mixed with water provided by rig
Pump Displacement	07/19/2010 08:44		2	20	39.5		120.0	20 bbls displacement as per customer.
Shut In Well	07/19/2010 08:56							
End Job	07/19/2010 08:57							



# ANADARKO 1415 Corporation GU D #2

## Squeeze



### Global Event Log

1 Starting Job	08:16:11	2 Test Lines	08:23:15	3 Start Job	08:26:49
4 Fresh Water Spacer	08:26:59	5 15.8 ppg HalCem B1	08:35:56	6 Pump Displacement	08:44:08
7 End Job	08:57:30	8 Ending Job	08:58:09		

Customer:  
Well Description:  
Company Rep:

Job Date: 19-Jul-2010  
Job Type:  
Cement Supervisor:

Sales Order #: 7509734  
ADC Used:  
Elite #:

OptiCem v6.4.9  
19-Jul-10 08:58