

**HALLIBURTON**

---

# **ANADARKO PETROLEUM CORP - EBUS**

---

**1415 Corporation GU D #2  
WATTENBERG  
Weld County , Colorado**

**Squeeze Hole in Casing**  
**12-Jul-2010**

**Job Site Documents**

*The Road to Excellence Starts with Safety*

<b>Sold To #:</b> 300466		<b>Ship To #:</b> 2794634		<b>Quote #:</b>		<b>Sales Order #:</b> 7495859	
<b>Customer:</b> ANADARKO PETROLEUM CORP - EBUS				<b>Customer Rep:</b> Naill, Kenny			
<b>Well Name:</b> 1415 Corporation GU			<b>Well #:</b> D #2			<b>API/UWI #:</b> 05-123-09971-00	
<b>Field:</b> WATTENBERG		<b>City (SAP):</b> FORT LUPTON		<b>County/Parish:</b> Weld		<b>State:</b> Colorado	
<b>Contractor:</b> Ensign			<b>Rig/Platform Name/Num:</b> 322				
<b>Job Purpose:</b> Squeeze Hole in Casing							
<b>Well Type:</b> Producing Well			<b>Job Type:</b> Squeeze Hole in Casing				
<b>Sales Person:</b> FLING, MATTHEW			<b>Srv Supervisor:</b> SIMS, DENNIS			<b>MBU ID Emp #:</b> 158880	

### Job Personnel

HES Emp Name	Exp Hrs	Emp #	HES Emp Name	Exp Hrs	Emp #	HES Emp Name	Exp Hrs	Emp #
AARON, WESLEY J		403606	DRAA, JOSEPH Michael		429860	SIMS, DENNIS A		158880
SIPNEFSKI, ROBERT Anthony		419391	TONN, JOSHUA L		476153			

### Equipment

HES Unit #	Distance-1 way	HES Unit #	Distance-1 way	HES Unit #	Distance-1 way	HES Unit #	Distance-1 way
10824253C	25 mile	10829457	25 mile	11398490	25 mile		

### Job Hours

Date	On Location Hours	Operating Hours	Date	On Location Hours	Operating Hours	Date	On Location Hours	Operating Hours
TOTAL			Total is the sum of each column separately					

### Job

Formation Name	Formation Depth (MD) Top	Bottom	Form Type	Job depth MD	Job Depth TVD	Water Depth	Perforation Depth (MD) From	To	Job Times	Date	Time	Time Zone
			BHST	7280. ft	7280. ft	Wk Ht Above Floor	7,280.00 ft	7,281.00 ft	Called Out	12 - Jul - 2010	12:00	MST
									On Location	12 - Jul - 2010	14:00	MST
									Job Started	12 - Jul - 2010	14:30	MST
									Job Completed	12 - Jul - 2010	16:20	MST
									Departed Loc	12 - Jul - 2010	17:00	MST

### Well Data

Description	New / Used	Max pressure psig	Size in	ID in	Weight lbm/ft	Thread	Grade	Top MD ft	Bottom MD ft	Top TVD ft	Bottom TVD ft
Casing	Used		4.5	4.	10.5				8115.		8115.
Tubing	Used		2.375	1.995	4.6				7064.		
Perforation Interval								7280.	7281.		

### Tools and Accessories

Type	Size	Qty	Make	Depth	Type	Size	Qty	Make	Depth	Type	Size	Qty	Make
Guide Shoe					Packer					Top Plug			
Float Shoe					Bridge Plug					Bottom Plug			
Float Collar					Retainer					SSR plug set			
Insert Float										Plug Container			
Stage Tool										Centralizers			

### Miscellaneous Materials

Gelling Agt	Conc	Surfactant	Conc	Acid Type	Qty	Conc	%
Treatment Fld	Conc	Inhibitor	Conc	Sand Type	Size		Qty



Fluid Data									
Stage/Plug #: 1									
Fluid #	Stage Type	Fluid Name	Qty	Qty uom	Mixing Density lbm/gal	Yield ft <sup>3</sup> /sk	Mix Fluid Gal/sk	Rate bbl/min	Total Mix Fluid Gal/sk
1	15.8# Cement	CMT - PREMIUM - CLASS G, 94 LB SK (100003685)	250.0	sacks	15.8	1.15	4.99	2.0	4.99
94 lbm		CMT - PREMIUM - CLASS G REG OR TYPE V, BULK (100003685)							
4.989 Gal		FRESH WATER							
Calculated Values		Pressures		Volumes					
Displacement		Shut In: Instant		Lost Returns		Cement Slurry		Pad	
Top Of Cement		5 Min		Cement Returns		Actual Displacement		Treatment	
Frac Gradient		15 Min		Spacers		Load and Breakdown		Total Job	
Rates									
Circulating		Mixing		Displacement		Avg. Job			
Cement Left In Pipe		Amount	66 ft	Reason	Shoe Joint				
Frac Ring # 1 @	ID	Frac ring # 2 @	ID	Frac Ring # 3 @	ID	Frac Ring # 4 @	ID		
The Information Stated Herein Is Correct				Customer Representative Signature					

*The Road to Excellence Starts with Safety*

<b>Sold To #:</b> 300466	<b>Ship To #:</b> 2794634	<b>Quote #:</b>	<b>Sales Order #:</b> 7495859
<b>Customer:</b> ANADARKO PETROLEUM CORP - EBUS		<b>Customer Rep:</b> Naill, Kenny	
<b>Well Name:</b> 1415 Corporation GU		<b>Well #:</b> D #2	<b>API/UWI #:</b> 05-123-09971-00
<b>Field:</b> WATTENBERG	<b>City (SAP):</b> FORT LUPTON	<b>County/Parish:</b> Weld	<b>State:</b> Colorado
<b>Legal Description:</b>			
<b>Lat:</b> N 0 deg. OR N 0 deg. 0 min. 0 secs.		<b>Long:</b> E 0 deg. OR E 0 deg. 0 min. 0 secs.	
<b>Contractor:</b> Ensign		<b>Rig/Platform Name/Num:</b> 322	
<b>Job Purpose:</b> Squeeze Hole in Casing			<b>Ticket Amount:</b>
<b>Well Type:</b> Producing Well		<b>Job Type:</b> Squeeze Hole in Casing	
<b>Sales Person:</b> FLING, MATTHEW		<b>Srv Supervisor:</b> SIMS, DENNIS	<b>MBU ID Emp #:</b> 158880

Activity Description	Date/Time	Cht #	Rate bbl/min	Volume bbl		Pressure psig		Comments
				Stage	Total	Tubing	Casing	
Safety Meeting	07/12/2010 14:30							
Start Job	07/12/2010 14:43							
Test Lines	07/12/2010 14:45						3047.0	
Injection Test	07/12/2010 14:47		2	4	4			2 bpm 1300 psi
Pump Cement	07/12/2010 15:07		3	51.2	55.2		766.0	250 sks ( 51.2 bbls) Premium G Cement mixed with water supplied by the rig
Pump Displacement	07/12/2010 15:27		3	29.5	84.7		46.0	29.5 bbls as per customer
Shutdown	07/12/2010 15:40							Shutdown for 30 min and try to squeeze
End Job	07/12/2010 16:15							

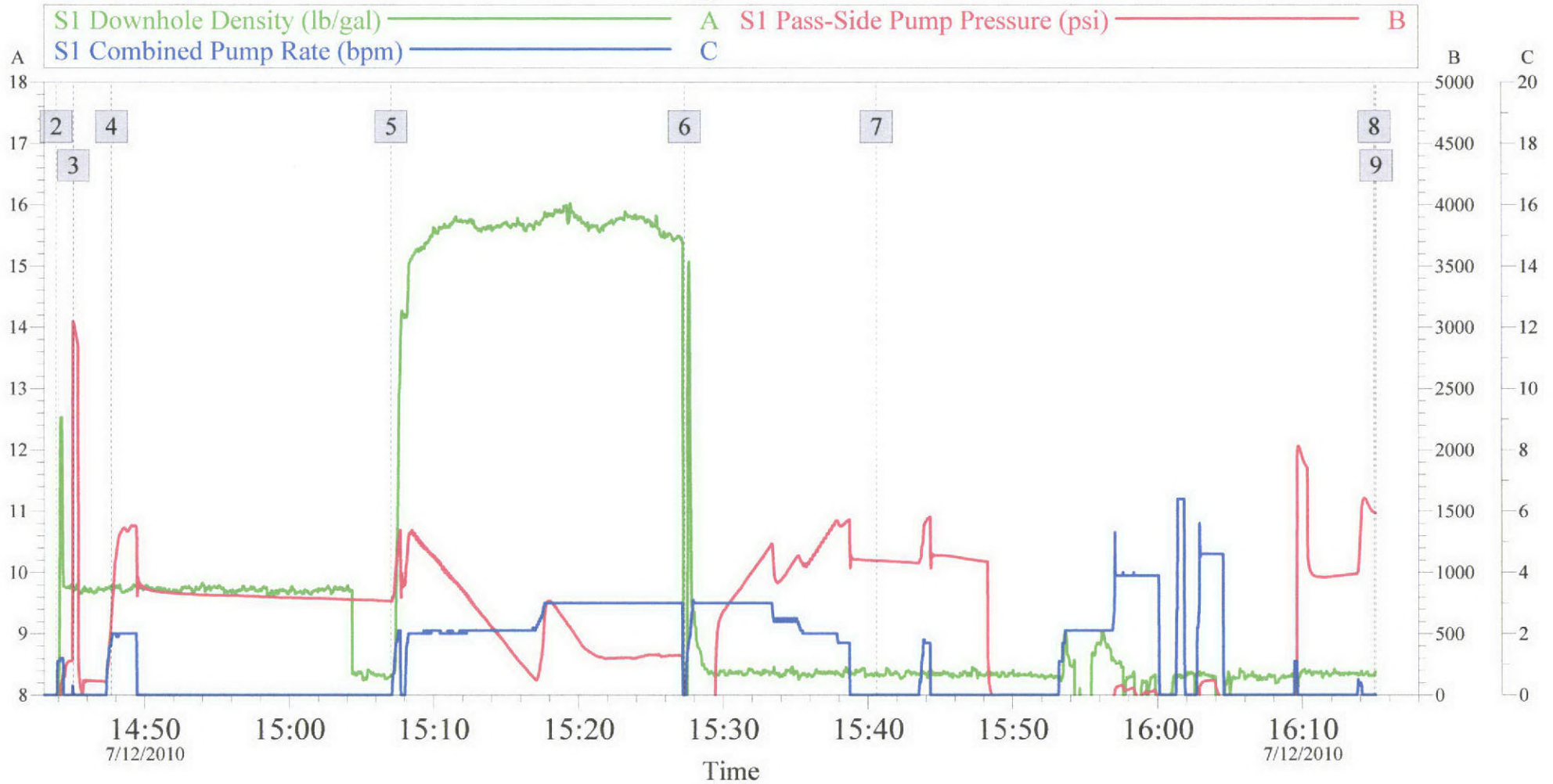


## Job Safety Analysis

<b>JSA</b>	<b>JOB TYPE:</b> Cementing	<b>DATE:</b> 12-Jul-2010	<b>NEW:</b>	<b>REVISED:</b> X
Anadarko 1415 Corporation GU 1 TICKET # 7495859	<b>NAME OF PERSON WHO DOES JOB:</b> PETERSON, ERIC Eugene	<b>COORDINATOR:</b> KELEHER, TRENA Lynn	<b>ANALYSIS BY:</b>	
<b>COMPANY:</b> ANADARKO PETROLEUM CORP - EBUS	<b>WELL LOCATION:</b> Weld, Colorado, United States of America	<b>DEPARTMENT:</b> Cementing Services	<b>REVIEWED BY:</b>	
<b>REQUIRED AND/OR RECOMMENDED PERSONAL PROTECTION EQUIPMENT:</b> HARD HAT / STEEL TOE BOOTS / SAFETY GLASSES / EAR PLUGS. ALL PPE			<b>APPROVED BY:</b>	
<b>SEQUENCE OF BASIC JOB STEPS</b>	<b>POTENTIAL HAZARDS</b>	<b>RECOMMENDED ACTION OR PROCEDURE</b>		
TESTING LINES	PARTED LINES	STAY CLEAR OF ALL HI PRESSURE LOINE		
MIXING CEMENT	DUST,CHEMCALS	USE PROPPER PPE		
WASHING UP UNIT	CHEMICALS ,WATER ON FLOOR,PRESSURE	USE PPE,KEEP FLOOR DRY ,STAY CLEAR OF ALL HIGH PRESSURE LINEWS		

# Anadarko - 1415 Corporation GU 2

## Squeeze



## Global Event Log

2	Start Job	14:43:50	3	Test Lines	14:45:02	4	Injection Test	14:47:41
5	15.8 ppg Premium G	15:07:03	6	Pump Displacement	15:27:20	7	Shutdown	15:40:35
8	End Job	16:14:58	9	Ending Job	16:15:06			

Customer:

Well Description:

Company Rep:

Job Date:

12-Jul-2010

Job Type:

Cement Supervisor:

Sales Order #: 7495859

ADC Used:

Elite #:

OptiCem v6.4.9  
12-Jul-10 16:16