

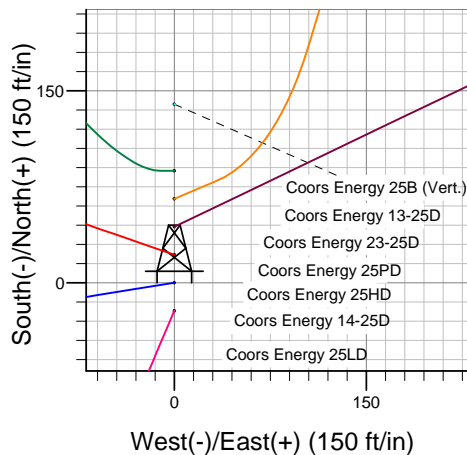
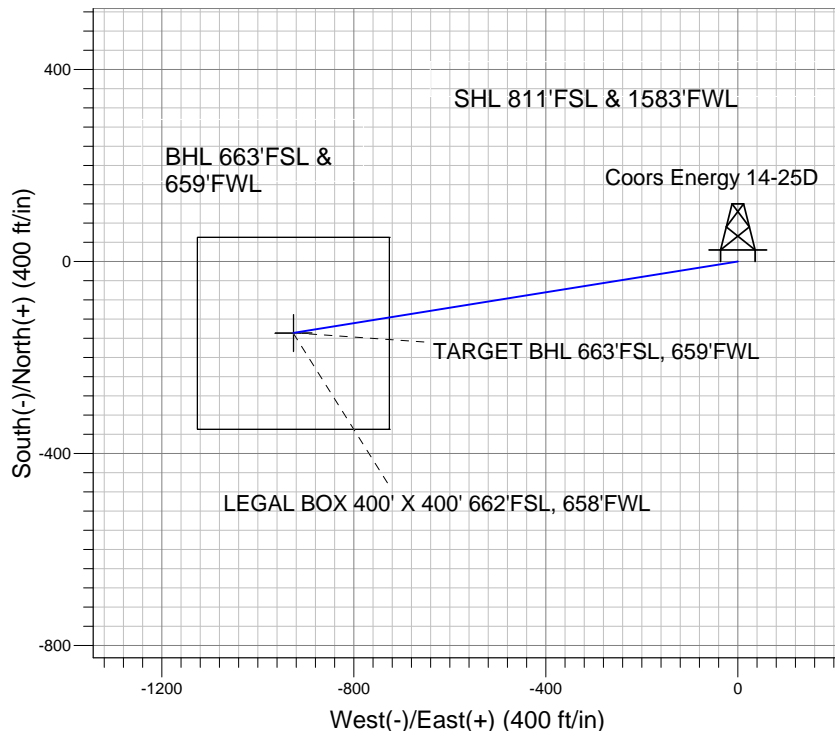
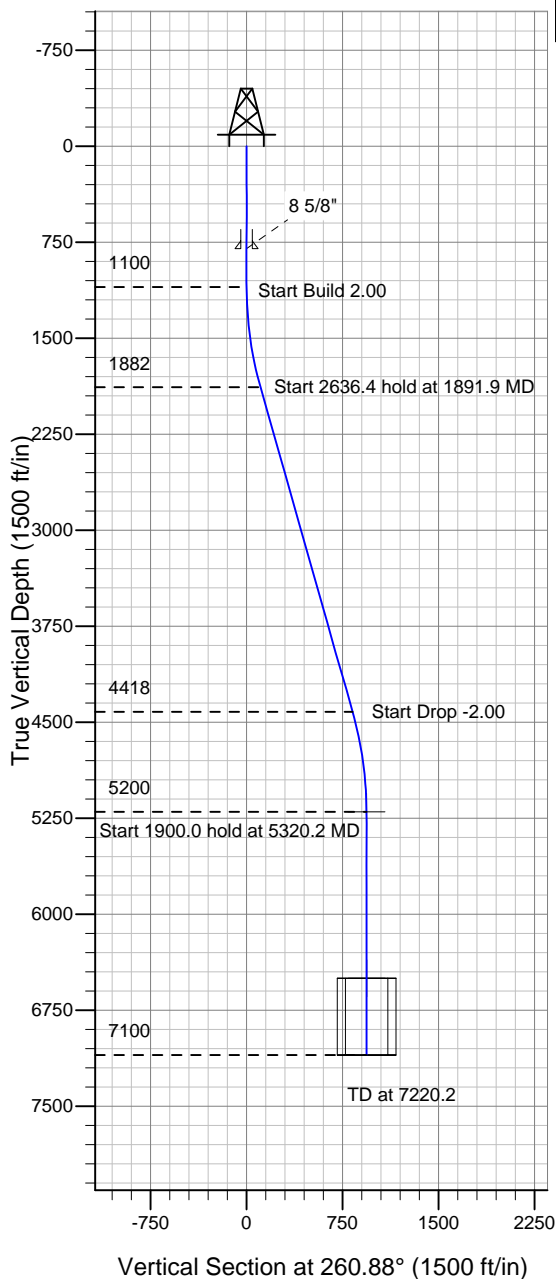
ENSIGN

Directional

Well Name: Coors Energy 14-25D

Surface Location: Coors Energy 13-25D Pad Sec.25-T3N-R64W
 North American Datum 1983 , US State Plane 1983 Colorado Northern Zone
 Ground Elevation: 4815.0
 +N/-S +E/-W Northing Easting Latitude Longitude Slot
 0.0 0.0 1314119.13 3278372.66 40° 11' 28.896 N 104° 30' 12.744 W
 Original Well ElevWELL @ 4828.0ft (Original Well Elev)

PETROLEUM DEVELOPMENT CORP Weld County CO



Coors Energy 14-25D
 Plan #2 (7-26-10)
 11:01, July 27 2010



Azimuths to True North
 Magnetic North: 8.84°
 Magnetic Field
 Strength: 53159.5nT
 Dip Angle: 66.96°
 Date: 6/2/2010
 Model: IGRF2010

WELLBORE TARGET DETAILS (LAT/LONG)

Name	TVD	+N/-S	+E/-W	Latitude	Longitude	Shape
TARGET BHL 663'FSL, 659'FWL	5200.0	-148.5	-925.2	40° 11' 27.428 N	104° 30' 24.665 W	Point
LEGAL BOX 400' X 400' 662'FSL, 658'FWL	6500.0	-149.5	-926.2	40° 11' 27.418 N	104° 30' 24.679 W	Rectangle (Sides: L400.0 W400.0)

SECTION DETAILS

Sec	MD	Inc	Azi	TVD	+N/-S	+E/-W	DLeg	TFace	VSec	Target
1	0.0	0.00	0.00	0.0	0.0	0.0	0.00	0.00	0.0	
	21100.0	0.00	0.00	1100.0	0.0	0.0	0.00	0.00	0.0	
	31891.9	15.84	260.88	1881.8	-17.2	-107.4	2.00	260.88	108.7	
	44528.3	15.84	260.88	4418.2	-131.3	-817.8	0.00	0.00	828.3	
	55320.2	0.00	0.00	5200.0	-148.5	-925.2	2.00	180.00	937.0	TARGET BHL 663'FSL, 659'FWL
	67220.2	0.00	0.00	7100.0	-148.5	-925.2	0.00	0.00	937.0	