

WELL LOCATION CERTIFICATE

SECTION 25, TOWNSHIP 3 NORTH, RANGE 64 WEST, 6TH P.M.

NOTES:

WELL FALLS IN AN OPEN FIELD.

THIS IS A DIRECTIONAL DRILL WELL.

BOTTOM HOLE IS AT 1986' FSL, 1977' FWL.

SEE LOCATION DRAWING FOR IMPROVEMENTS.

GROUND ELEVATION = 4815'

LAT. & LONG. = N 40.19154°

W 104.50354°

W1/4 CRN SEC 25
#5 REBAR

2651.9'

N00°13'04"E

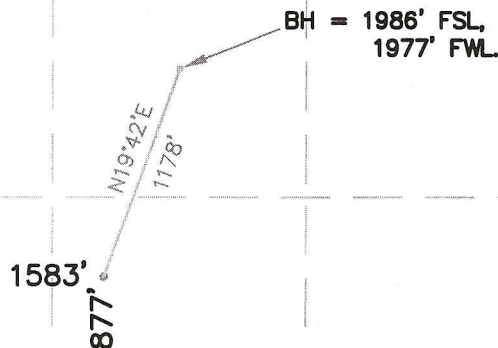
SW CRN SEC 25
3.25°AC LS 10855

BASIS OF BEARINGS

N90°00'00"E

5268.9'

SE CRN SEC. 25
3.25°AC LS 10855

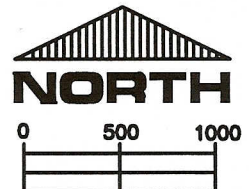


I HEREBY STATE TO PETROLEUM DEVELOPMENT CORP. THAT THIS WELL LOCATION CERTIFICATE FOR THE WELL COORS ENERGY 23-25D IS LOCATED 877' FSL & 1583' FWL, SEC. 25, T3N, R64W, 6PM.



LEGEND

- = FOUND MONUMENT
- = PROPOSED WELL
- = BOTTOM HOLE



SCALE 1" = 1000'

ELEVATION SOURCE = USGS 7.5' QUAD.MAP CONTOURS
NGVD 1929 DATUM.

LAT. & LONG. ARE DIFFERENTIALLY CORRECTED (NAD'83)
USING (DGPS) WITH (PDOP) VALUES LESS THAN SIX (6).

THOMAS G. CARLSON, PLS 24657
HORSESHOE SURVEYING, LLC

SHOWN DISTANCES ARE FIELD MEASURED - EXTERIOR SECTION LINES
ARE DRAWN TO SCALE (BEST APPROX. OR FOUND MONUMENT).

THIS IS NOT A MONUMENTED BOUNDARY SURVEY, IT IS ONLY A
DRAWING INTENDED TO DEPICT THE WELL LOCATION TO SECTION LINES.

DISTANCES TO WELL SHOWN PERPENDICULAR
TO SECTION LINES.

PREPARED BY:

HORSESHOE SURVEYING, LLC
PO BOX 150458
LAKEWOOD, CO 80215
(720)872-0196

WELL NAME:

COORS ENERGY 23-25D

LOCATION:

WELD COUNTY, CO
SW1/4, SEC. 25, T3N, R64W, 6TH P.M.

DRAWING DATE:

6-24-10

FIELD DATE:

6-23-10

BY:

TGC

CHKD:

JOB NO.

SHEET NO.

1 OF 1