

ENSIGN

Directional

Well Name: Coors Energy 23-25D

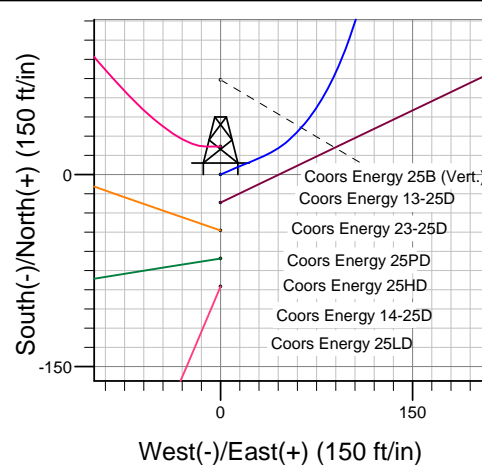
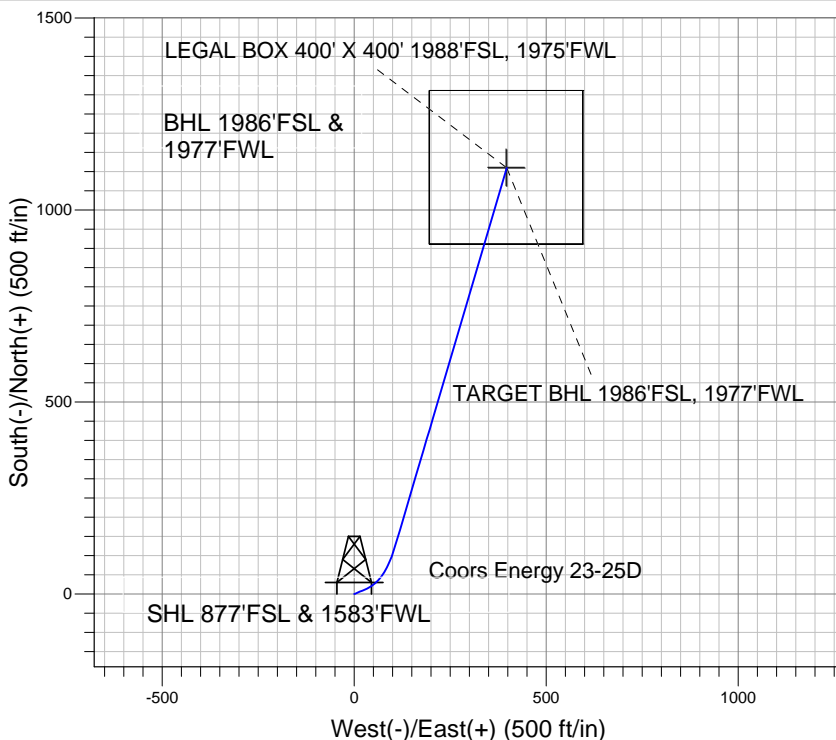
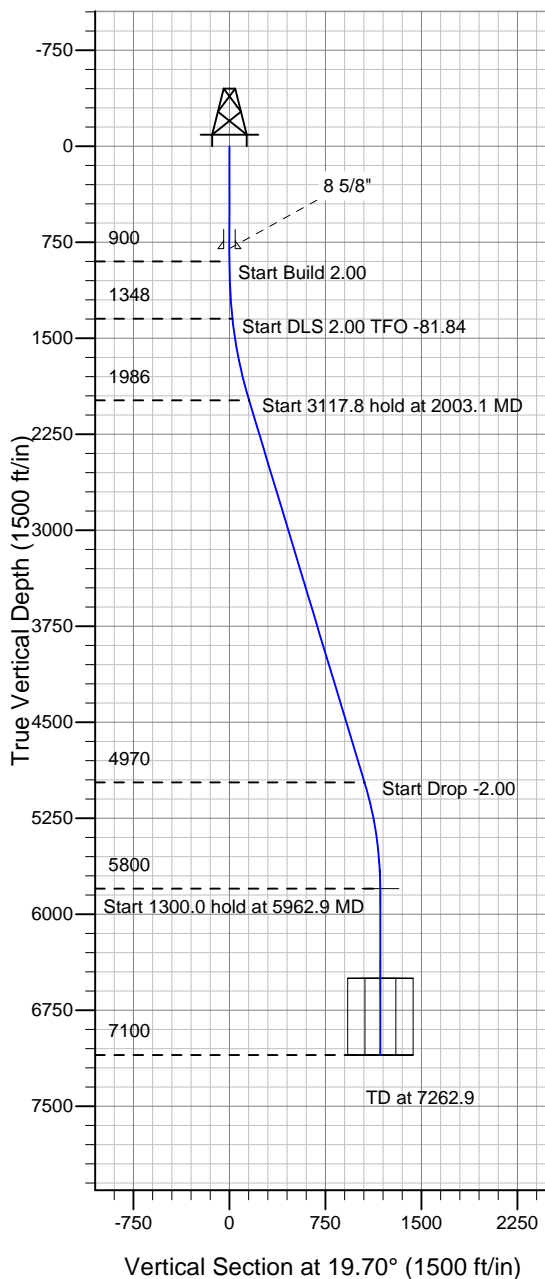
Surface Location: Coors Energy 13-25D Pad Sec.25-T3N-R64W
North American Datum 1983 , US State Plane 1983 Colorado Northern Zone

Ground Elevation: 4815.0

+N/-S	+E/-W	Northing	Easting	Latitude	Longitude	Slot
0.0	0.0	1314184.70	3278371.92	40° 11' 29.544 N	104° 30' 12.744 W	

Original Well ElevWELL @ 4828.0ft (Original Well Elev)

PETROLEUM DEVELOPMENT CORP Weld County CO



Coors Energy 23-25D
Plan #2 (7-26-10)
15:31, July 27 2010



Azimuths to True North
Magnetic North: 8.84°
Magnetic Field
Strength: 53159.6snT
Dip Angle: 66.96°
Date: 6/2/2010
Model: IGRF2010

WELLBORE TARGET DETAILS (LAT/LONG)

Name	TVD	+N/-S	+E/-W	Latitude	Longitude	Shape
TARGET BHL 1986'FSL, 1977'FWL	5800.0	1109.1	397.1	40° 11' 40.503 N	104° 30' 7.627 W	Point
LEGAL BOX 400' X 400' 1988'FSL, 1975'FWL	6500.0	1111.1	395.1	40° 11' 40.524 N	104° 30' 7.653 W	Rectangle (Sides: L400.0 W400.0)

SECTION DETAILS

Sec	MD	Inc	Azi	TVD	+N/-S	+E/-W	DLeg	TFace	VSec	Target
1	0.0	0.00	0.00	0.0	0.0	0.0	0.00	0.00	0.0	
2	900.0	0.00	0.00	900.0	0.0	0.0	0.00	0.00	0.0	
3	1350.0	9.00	67.00	1348.2	13.8	32.5	2.00	67.00	23.9	
4	2003.1	16.84	16.45	1986.0	125.0	106.6	2.00	-81.84	153.6	
5	5120.9	16.84	16.45	4970.1	991.2	362.3	0.00	0.00	1055.3	
6	5962.9	0.00	0.00	5800.0	1109.1	397.1	2.00	180.00	1178.0	TARGET BHL 1986'FSL, 1977'FWL
7	7262.9	0.00	0.00	7100.0	1109.1	397.1	0.00	0.00	1178.0	