

ENSIGN

Directional

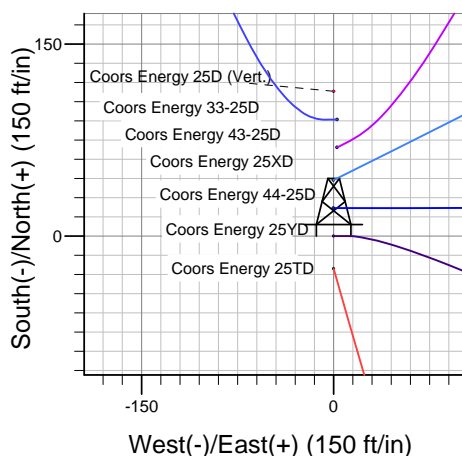
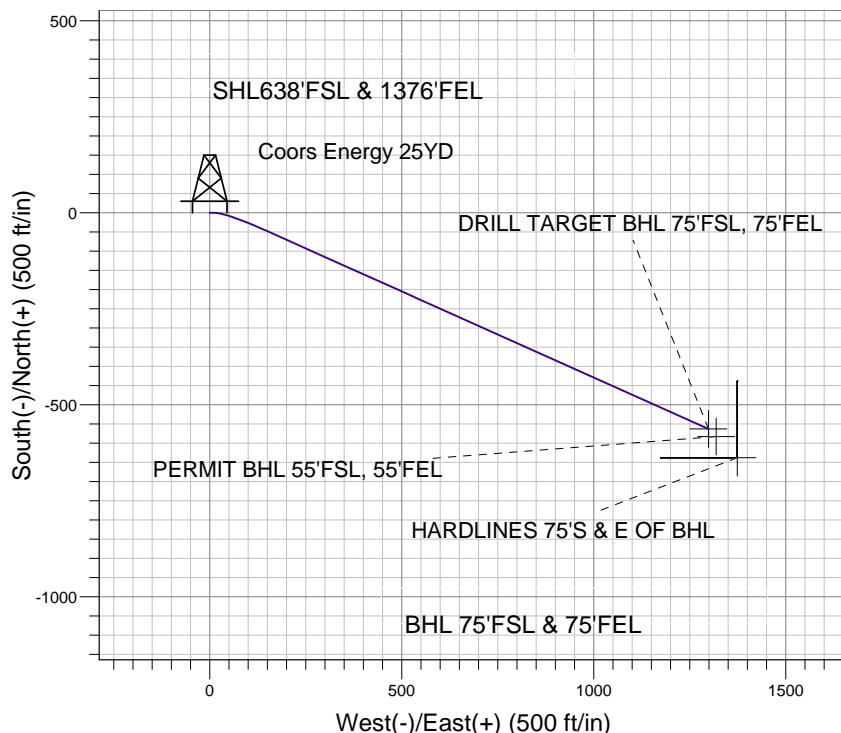
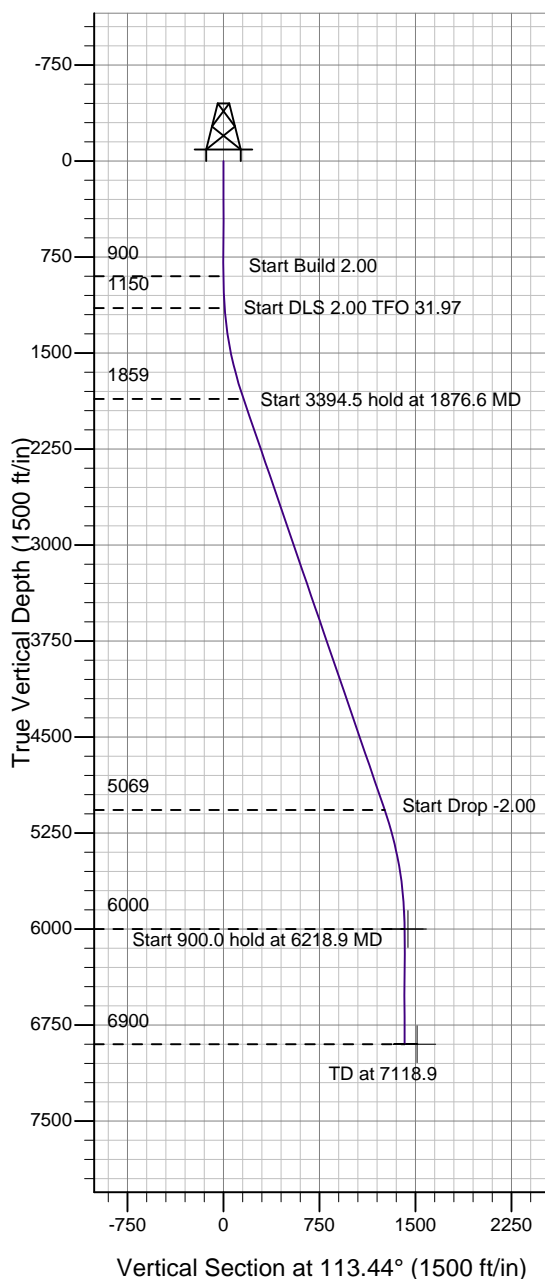
Well Name: Coors Energy 25YD

Surface Location: Coors Energy 33-25D Pad Sec.25-T3N-R64W
North American Datum 1983 , US State Plane 1983 , Colorado Northern Zone

Ground Elevation: 4790.0

+N/-S	+E/-W	Northing	Easting	Latitude	Longitude	Slot
0.0	0.0	1313977.58	3280679.19	40° 11' 27.240 N	104° 29' 43.044 W	
Original Well Elev WELL @ 4803.0ft (Original Well Elev)						

PETROLEUM DEVELOPMENT CORP Weld County CO



Coors Energy 25YD
Plan #1 (6-2-10)
10:03, June 04 2010



Azimuths to True North
Magnetic North: 8.84°
Magnetic Field
Strength: 53160.4snT
Dip Angle: 66.96°
Date: 6/2/2010
Model: IGRF2010

WELLBORE TARGET DETAILS (LAT/LONG)

Name	TVD	+N/-S	+E/-W	Latitude	Longitude	Shape
DRILL TARGET BHL 75'FSL, 75'FEL	6000.0	-563.1	1298.9	40° 11' 21.675 N	104° 29' 26.307 W	Point
PERMIT BHL 55'FSL, 55'FEL	6000.0	-583.1	1318.9	40° 11' 21.478 N	104° 29' 26.050 W	Point
HARDLINES 75'S & E OF BHL	6900.0	-638.1	1373.9	40° 11' 20.934 N	104° 29' 25.341 W	Polygon

SECTION DETAILS

Sec	MD	Inc	Azi	TVD	+N/-S	+E/-W	DLeg	TFace	VSec	Target
1	0.0	0.00	0.00	0.0	0.0	0.0	0.00	0.00	0.0	
2	900.0	0.00	0.00	900.0	0.0	0.0	0.00	0.00	0.0	
3	1150.0	5.00	90.00	1149.7	0.0	10.9	2.00	90.00	10.0	
4	1876.6	18.95	114.15	1859.0	-48.5	151.0	2.00	31.97	157.8	
5	5271.1	18.95	114.15	5069.5	-499.6	1157.1	0.00	0.00	1260.4	
6	6218.9	0.00	0.00	6000.0	-563.1	1298.9	2.00	180.00	1415.7	DRILL TARGET BHL 75'FSL, 75'FEL
7	7118.9	0.00	0.00	6900.0	-563.1	1298.9	0.00	0.00	1415.7	