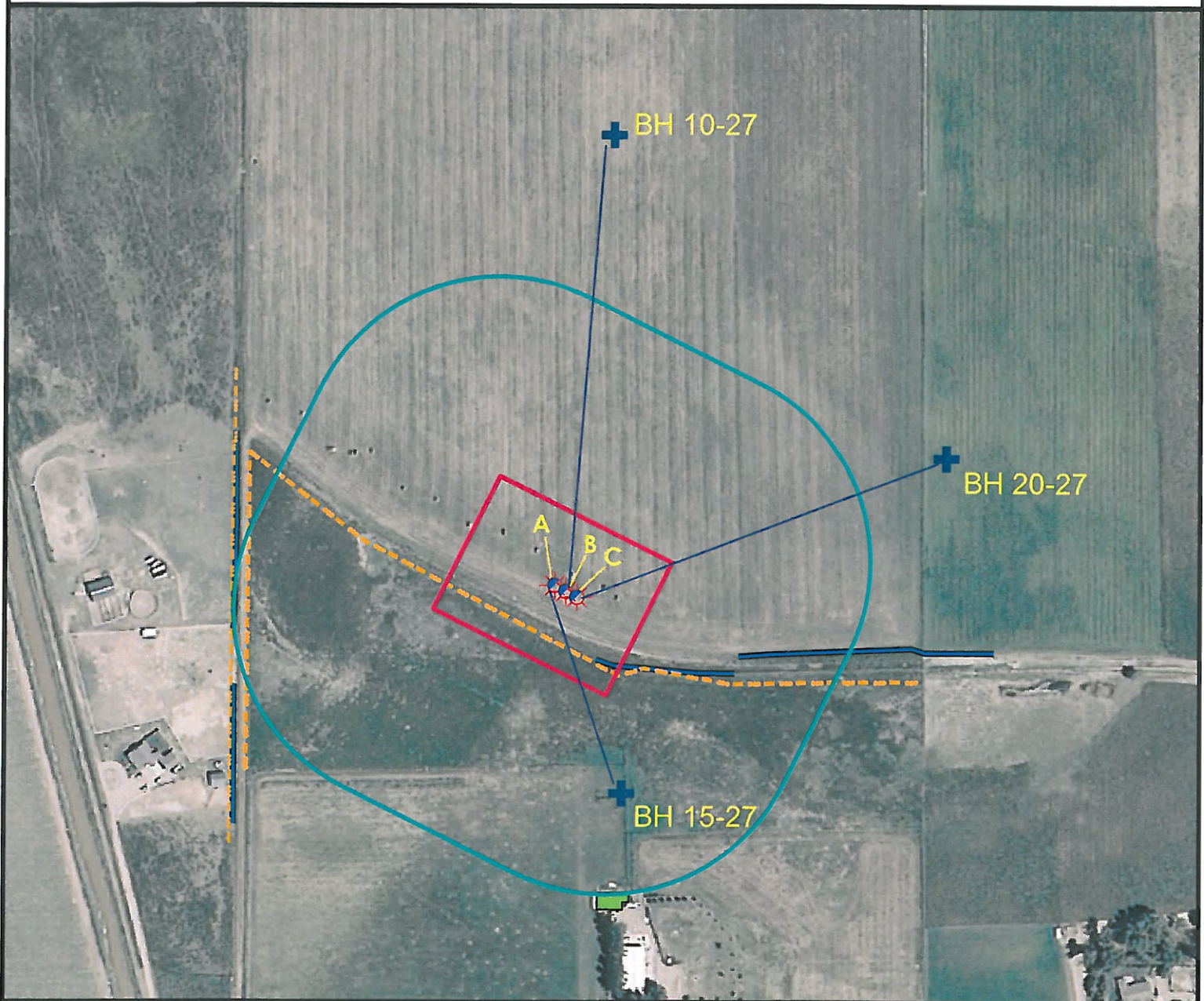


# Bottom Hole Locations



A. Proposed Well G&D HANKS 15-27.

B. Proposed Well G&D HANKS 10-27.

C. Proposed Well G&D HANKS 20-27.



## Legend

- |  |                      |  |                     |
|--|----------------------|--|---------------------|
|  | Proposed Well        |  | Building/Residence  |
|  | Existing Well        |  | Disturbance Area    |
|  | Plugged Well         |  | Water Body          |
|  | Water Well           |  | Utility Box         |
|  | CattleGuard/Gate     |  | Railroad            |
|  | Bridge               |  | Fence               |
|  | Bottom Hole          |  | Overhead Power Line |
|  | 400' Radius          |  | Pipeline            |
|  | Facilities Enclosure |  | Access Road         |
|  |                      |  | Ditch/Canal         |
|  |                      |  | Concrete Ditch      |

## Multi Well Plan

### G&D HANKS 10-27 Pad Bottom Hole Locations

Surface Location: T7N R66W S27  
Description of surface uses : Cropland

Field Date: 05/05/2010  
Drawing Date: 06/22/2010  
Drafter: KLM  
Checked By: KLM

Aerial Photo supplied by NAIP - 2009

Prepared for:  
**BAYSWATER  
E & P, LLC**



Use our resources to find yours!  
[www.petro-fs.com](http://www.petro-fs.com)

1801 W. 13th Ave Suite 207  
Denver, CO 80204  
(303) 928-7128  
111 E. Third Street  
Rifle, CO 81650  
(970) 625-4740