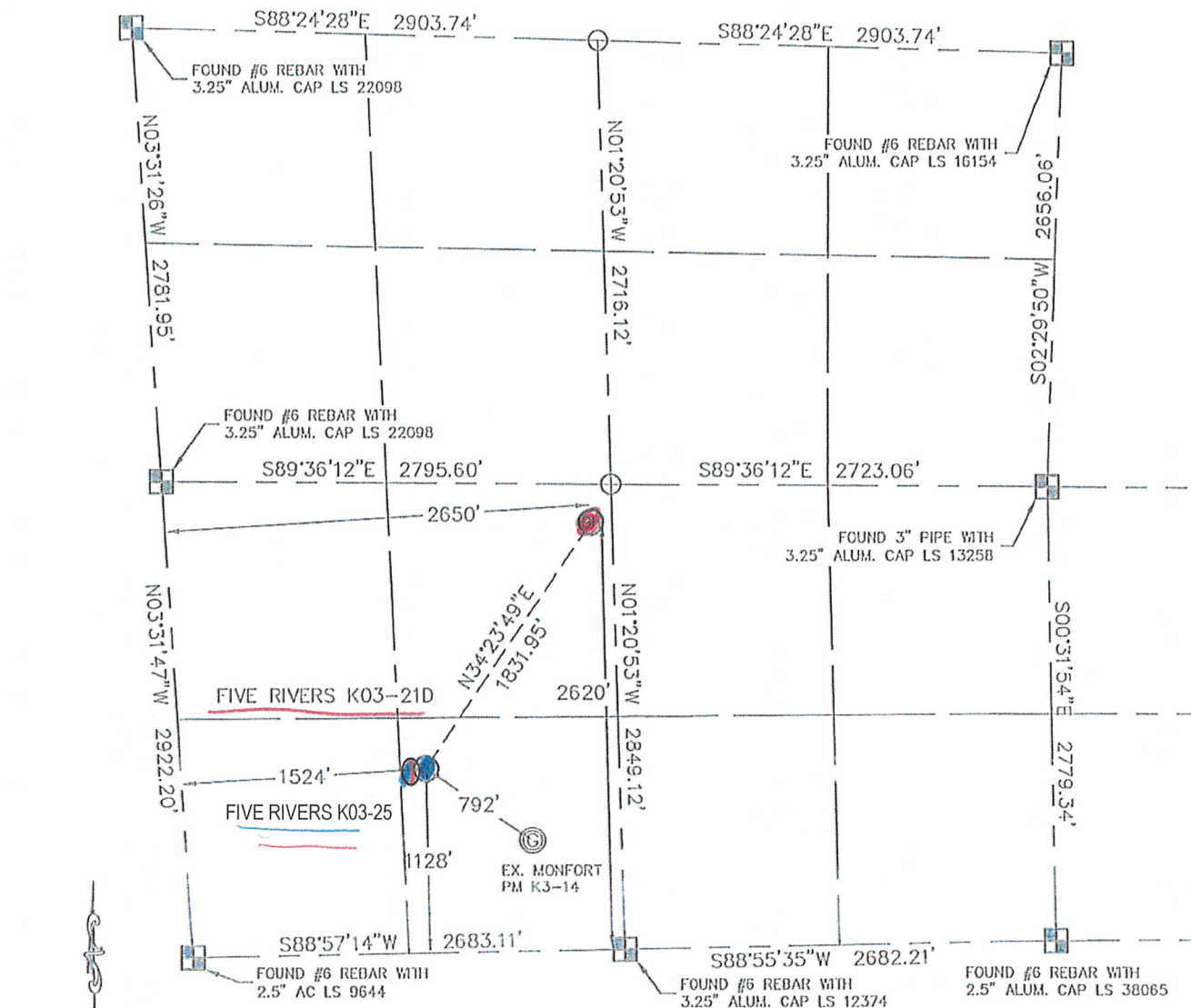


KING SURVEYORS, INC. 650 E. GARDEN DR. WINDSOR, CO 80550

## WELL LOCATION CERTIFICATE

THIS MAP DOES NOT REPRESENT A BOUNDARY SURVEY

SECTION: 3  
TOWNSHIP: 4N  
RANGE: 66WIn accordance with a request from JOE MARTIN with Noble Energy Inc.King Surveyors Inc. has determined the surface location of the FIVE RIVERS K03-21D to be 1128' from the South line and 1524' from the West line and the bottom hole to be 2620' from the South line and 2650' from the West line as measured at right angles from the section lines of Section 3, Township 4 North, Range 66 West of the Sixth Principal Meridian, County of Weld, State of Colorado.I hereby state that this Well Location Certificate was prepared by me, or under my direct supervision, that the fieldwork was completed on 3-10-10, for and on behalf of Noble Energy Inc. That this is not a Land Survey Plat or an Improvement Survey Plat, and that it is not to be relied upon for establishment of fence, building, or other future improvement lines.

## NOTE:

- 1) Bearings shown are Grid Bearings of the Colorado State Plane Coordinate System, North Zone, North American Datum 1983/2007. The lineal dimensions as contained herein are based upon the "U.S. Survey Foot."
- 2) Ground elevations are based on an observed GPS elevation (NAVD 1988 DATUM).
- 3) NEAREST EXISTING WELL: MONFORT PM K3-14
- 4) IMPROVEMENTS: See VISIBLE IMPROVEMENTS exhibit for all visible improvements within 600' of well head.
- 5) SURFACE USE: CORN

## SURFACE LOCATION

LATITUDE: 40.33667N  
 LONGITUDE: 104.76807W  
 PDOP: 1.3  
 ELEV: 4720  
 1/4, 1/4: SE1/4SW1/4  
 NEAREST PROPERTY LINE: 182' NORTHWEST

## BOTTOM HOLE

LATITUDE: 40.34080N  
 LONGITUDE: 104.76432W

## NOTE:

According to Colorado law, you must commence any legal action based upon any defect in this W.L.C. within three years after you discover such defect. In no event, may any action based upon any defect in this survey be commenced more than ten years after the date of the certificate shown hereon. (13-80-105 C.R.S.)

## LEGEND

- = ALIQUOT MONUMENT AS DESCRIBED  
 = CALCULATED POSITION

*Michael Chad Dilka*  
 Michael Chad Dilka - On Behalf of King Surveyors, Inc.  
 Colorado Licensed Professional Land Surveyor #38106  
 PROJECT#: 2010055

