



**Bill Barrett Corporation**

## **Bill Barrett Corp.**

Garfield County, Colorado

Kaufman 6 Pad

Kaufman 21D-24-692

Wellbore #1

Plan: plan1 02jun10 smw

## **Standard Planning Report**

03 June, 2010

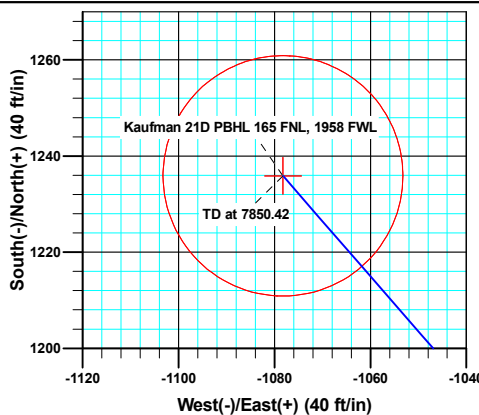
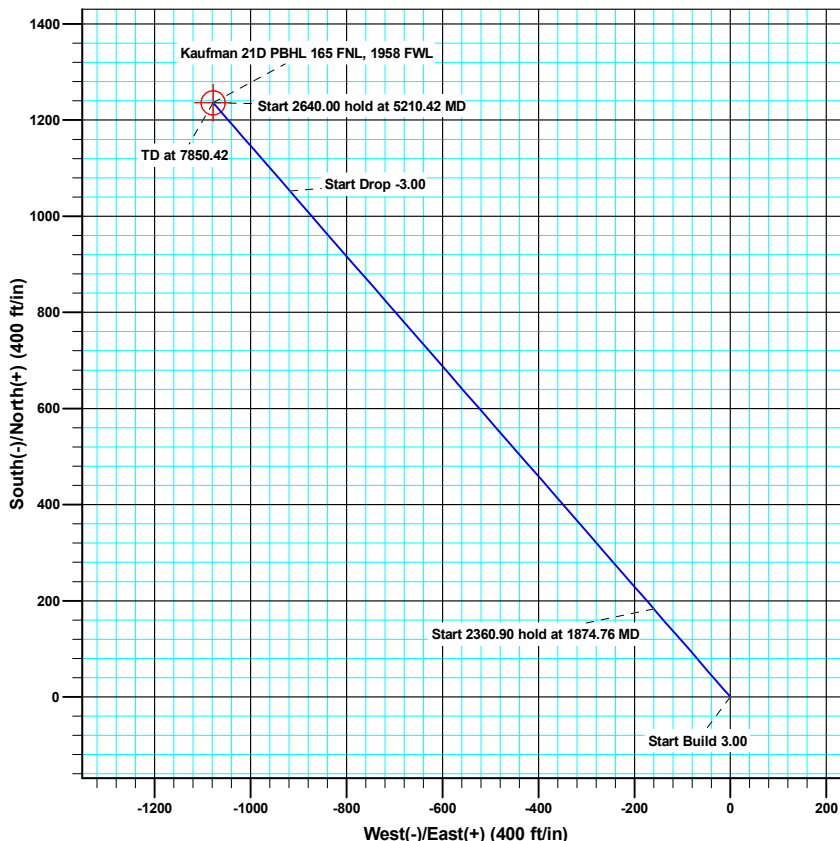
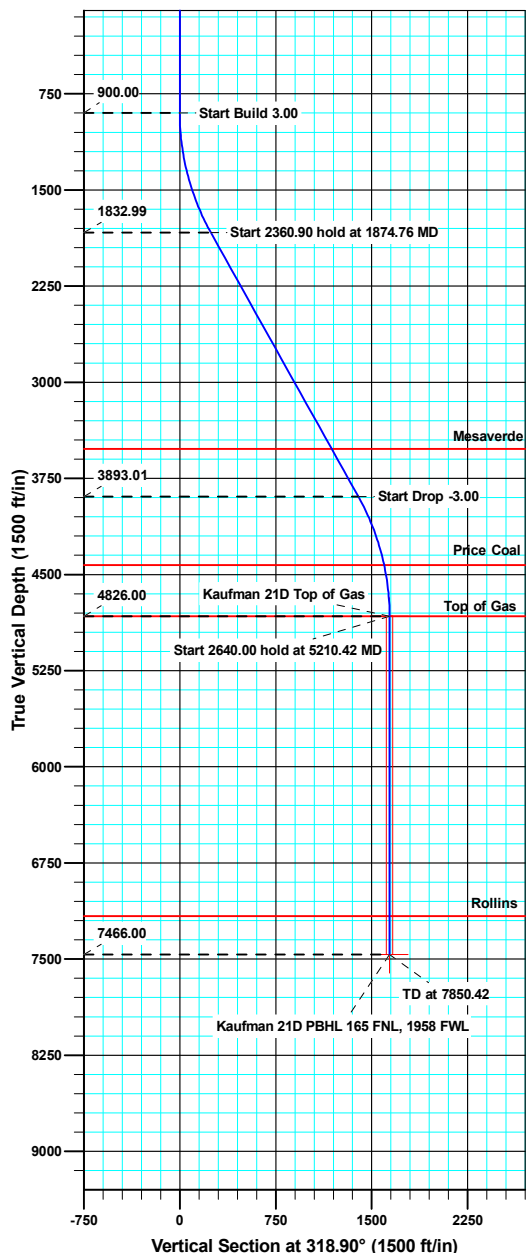




# WELL DETAILS: Kaufman 21D-24-692

Ground Level: 5763.00

North American Datum 1983 , US State Plane 1983 , Colorado Central Zone  
 +N/-S +E/-W Northing Easting Latitude Longitude  
 0.00 0.00 1619796.47 2403600.23 39° 30' 57.84 N 107° 36' 51.06 W



Azimuths to True North  
 Magnetic North: 10.29°

Magnetic Field  
 Strength: 52446.2snT  
 Dip Angle: 65.87°  
 Date: 06/02/2010  
 Model: IGRF200510

## ANNOTATIONS

TVD	MD	Inc	Azi	+N/-S	+E/-W	Vsect	Departure	Annotation
900.00	900.00	0.00	0.00	0.00	0.00	0.00	0.00	Start Build 3.00
1832.99	1874.76	29.24	318.90	183.41	-160.01	243.40	243.40	Start 2360.90 hold at 1874.76 MD
3893.01	4235.66	29.24	318.90	1052.50	-918.20	1396.73	1396.73	Start Drop -3.00
4826.00	5210.42	0.00	0.00	1235.91	-1078.21	1640.12	1640.12	Start 2640.00 hold at 5210.42 MD
7466.00	7850.42	0.00	0.00	1235.91	-1078.21	1640.12	1640.12	TD at 7850.42



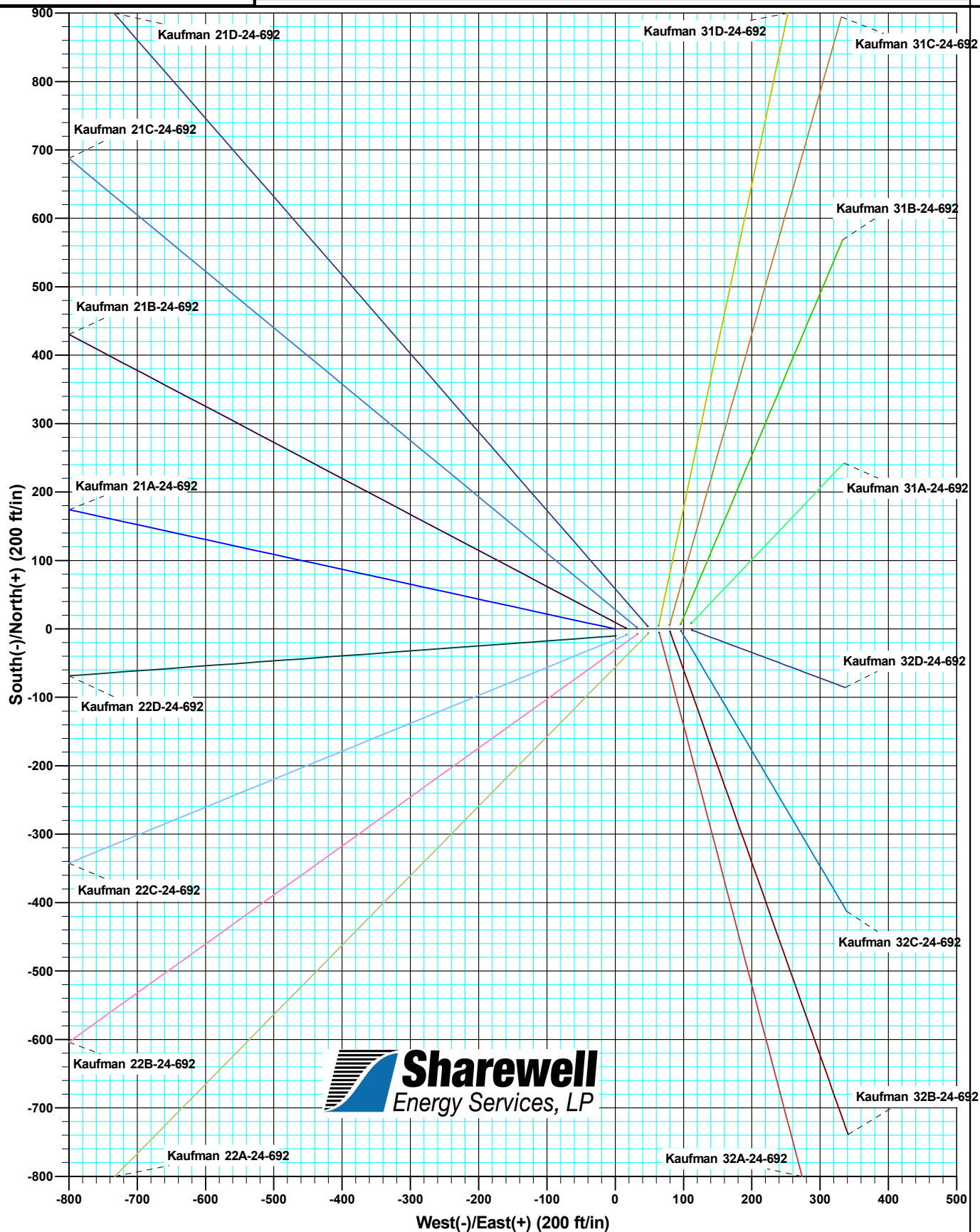


Bill Barrett Corporation

WELL DETAILS: Kaufman 6 Pad

Ground Level: 5763.00

North American Datum 1983	US State Plane 1983	Colorado Central Zone			
+N/-S	+E/-W	North	East	Latitude	Longitude
0.00	0.00	1619793.94	2403552.19	39° 30' 57.81 N	107° 36' 51.67 W



<b>Database:</b>	SWFS01	<b>Local Co-ordinate Reference:</b>	Well Kaufman 21D-24-692
<b>Company:</b>	Bill Barrett Corp.	<b>TVD Reference:</b>	KB @ 5786.00ft
<b>Project:</b>	Garfield County, Colorado	<b>MD Reference:</b>	KB @ 5786.00ft
<b>Site:</b>	Kaufman 6 Pad	<b>North Reference:</b>	True
<b>Well:</b>	Kaufman 21D-24-692	<b>Survey Calculation Method:</b>	Minimum Curvature
<b>Wellbore:</b>	Wellbore #1		
<b>Design:</b>	plan1 02jun10 smw		

<b>Project</b>	Garfield County, Colorado		
<b>Map System:</b>	US State Plane 1983	<b>System Datum:</b>	Mean Sea Level
<b>Geo Datum:</b>	North American Datum 1983		
<b>Map Zone:</b>	Colorado Central Zone		

Site	Kaufman 6 Pad				
Site Position:		Northing:	1,619,793.95 usft	Latitude:	39° 30' 57.81 N
From:	Lat/Long	Easting:	2,403,552.20 usft	Longitude:	107° 36' 51.67 W
Position Uncertainty:	0.00 ft	Slot Radius:	0.00 ft	Grid Convergence:	-1.33 °

Well	Kaufman 21D-24-692					
Well Position	+N/-S	3.63 ft	Northing:	1,619,796.46 usft	Latitude:	39° 30' 57.84 N
	+E/-W	47.96 ft	Easting:	2,403,600.23 usft	Longitude:	107° 36' 51.06 W
Position Uncertainty		0.00 ft	Wellhead Elevation:		Ground Level:	5,763.00 ft

<b>Wellbore</b>	Wellbore #1				
<b>Magnetics</b>	<b>Model Name</b>	<b>Sample Date</b>	<b>Declination (°)</b>	<b>Dip Angle (°)</b>	<b>Field Strength (nT)</b>
	IGRF200510	06/02/10	10.29	65.87	52,446

<b>Design</b>	plan1 02jun10 smw			
<b>Audit Notes:</b>				
<b>Version:</b>	<b>Phase:</b>	PROTOTYPE	<b>Tie On Depth:</b>	0.00
<b>Vertical Section:</b>	<b>Depth From (TVD) (ft)</b>	<b>+N/-S (ft)</b>	<b>+E/-W (ft)</b>	<b>Direction (°)</b>
	0.00	0.00	0.00	318.90

<b>Plan Sections</b>										
Measured Depth (ft)	Inclination (°)	Azimuth (°)	Vertical Depth (ft)	+N/-S (ft)	+E/-W (ft)	Dogleg Rate (°/100ft)	Build Rate (°/100ft)	Turn Rate (°/100ft)	TFO (°)	Target
0.00	0.00	0.00	0.00	0.00	0.00	0.00	0.00	0.00	0.00	
900.00	0.00	0.00	900.00	0.00	0.00	0.00	0.00	0.00	0.00	
1,874.76	29.24	318.90	1,832.99	183.41	-160.01	3.00	3.00	0.00	318.90	
4,235.66	29.24	318.90	3,893.01	1,052.50	-918.20	0.00	0.00	0.00	0.00	
5,210.42	0.00	0.00	4,826.00	1,235.91	-1,078.21	3.00	-3.00	0.00	180.00	Kaufman 21D Top of I
7,850.42	0.00	0.00	7,466.00	1,235.91	-1,078.21	0.00	0.00	0.00	0.00	Kaufman 21D PBHL 1

<b>Database:</b>	SWFS01	<b>Local Co-ordinate Reference:</b>	Well Kaufman 21D-24-692
<b>Company:</b>	Bill Barrett Corp.	<b>TVD Reference:</b>	KB @ 5786.00ft
<b>Project:</b>	Garfield County, Colorado	<b>MD Reference:</b>	KB @ 5786.00ft
<b>Site:</b>	Kaufman 6 Pad	<b>North Reference:</b>	True
<b>Well:</b>	Kaufman 21D-24-692	<b>Survey Calculation Method:</b>	Minimum Curvature
<b>Wellbore:</b>	Wellbore #1		
<b>Design:</b>	plan1 02jun10 smw		

Planned Survey									
Measured Depth (ft)	Inclination (°)	Azimuth (°)	Vertical Depth (ft)	+N/-S (ft)	+E/-W (ft)	Vertical Section (ft)	Dogleg Rate (°/100ft)	Build Rate (°/100ft)	Turn Rate (°/100ft)
900.00	0.00	0.00	900.00	0.00	0.00	0.00	0.00	0.00	0.00
<b>Start Build 3.00</b>									
1,000.00	3.00	318.90	999.95	1.97	-1.72	2.62	3.00	3.00	0.00
1,100.00	6.00	318.90	1,099.63	7.88	-6.88	10.46	3.00	3.00	0.00
1,200.00	9.00	318.90	1,198.77	17.72	-15.46	23.51	3.00	3.00	0.00
1,300.00	12.00	318.90	1,297.08	31.45	-27.44	41.74	3.00	3.00	0.00
1,400.00	15.00	318.90	1,394.31	49.04	-42.78	65.08	3.00	3.00	0.00
1,500.00	18.00	318.90	1,490.18	70.44	-61.45	93.48	3.00	3.00	0.00
1,600.00	21.00	318.90	1,584.43	95.59	-83.39	126.85	3.00	3.00	0.00
1,700.00	24.00	318.90	1,676.81	124.42	-108.55	165.12	3.00	3.00	0.00
1,800.00	27.00	318.90	1,767.06	156.86	-136.85	208.16	3.00	3.00	0.00
1,874.76	29.24	318.90	1,832.99	183.41	-160.01	243.40	3.00	3.00	0.00
<b>Start 2360.90 hold at 1874.76 MD</b>									
1,900.00	29.24	318.90	1,855.01	192.70	-168.11	255.73	0.00	0.00	0.00
2,000.00	29.24	318.90	1,942.27	229.51	-200.23	304.58	0.00	0.00	0.00
2,100.00	29.24	318.90	2,029.52	266.33	-232.34	353.43	0.00	0.00	0.00
2,200.00	29.24	318.90	2,116.78	303.14	-264.46	402.28	0.00	0.00	0.00
2,300.00	29.24	318.90	2,204.03	339.95	-296.57	451.13	0.00	0.00	0.00
2,400.00	29.24	318.90	2,291.29	376.76	-328.69	499.98	0.00	0.00	0.00
2,500.00	29.24	318.90	2,378.55	413.57	-360.80	548.83	0.00	0.00	0.00
2,600.00	29.24	318.90	2,465.80	450.38	-392.92	597.69	0.00	0.00	0.00
2,700.00	29.24	318.90	2,553.06	487.19	-425.03	646.54	0.00	0.00	0.00
2,800.00	29.24	318.90	2,640.31	524.01	-457.15	695.39	0.00	0.00	0.00
2,900.00	29.24	318.90	2,727.57	560.82	-489.26	744.24	0.00	0.00	0.00
3,000.00	29.24	318.90	2,814.82	597.63	-521.38	793.09	0.00	0.00	0.00
3,100.00	29.24	318.90	2,902.08	634.44	-553.49	841.94	0.00	0.00	0.00
3,200.00	29.24	318.90	2,989.34	671.25	-585.60	890.79	0.00	0.00	0.00
3,300.00	29.24	318.90	3,076.59	708.06	-617.72	939.64	0.00	0.00	0.00
3,400.00	29.24	318.90	3,163.85	744.88	-649.83	988.50	0.00	0.00	0.00
3,500.00	29.24	318.90	3,251.10	781.69	-681.95	1,037.35	0.00	0.00	0.00
3,600.00	29.24	318.90	3,338.36	818.50	-714.06	1,086.20	0.00	0.00	0.00
3,700.00	29.24	318.90	3,425.61	855.31	-746.18	1,135.05	0.00	0.00	0.00
3,800.00	29.24	318.90	3,512.87	892.12	-778.29	1,183.90	0.00	0.00	0.00
3,809.32	29.24	318.90	3,521.00	895.55	-781.28	1,188.45	0.00	0.00	0.00
<b>Mesaverde</b>									
3,900.00	29.24	318.90	3,600.13	928.93	-810.41	1,232.75	0.00	0.00	0.00
4,000.00	29.24	318.90	3,687.38	965.74	-842.52	1,281.60	0.00	0.00	0.00
4,100.00	29.24	318.90	3,774.64	1,002.56	-874.64	1,330.45	0.00	0.00	0.00
4,200.00	29.24	318.90	3,861.89	1,039.37	-906.75	1,379.31	0.00	0.00	0.00
4,235.66	29.24	318.90	3,893.01	1,052.50	-918.20	1,396.73	0.00	0.00	0.00
<b>Start Drop -3.00</b>									
4,300.00	27.31	318.90	3,949.67	1,075.46	-938.24	1,427.21	3.00	-3.00	0.00
4,400.00	24.31	318.90	4,039.68	1,108.27	-966.86	1,470.74	3.00	-3.00	0.00
4,500.00	21.31	318.90	4,131.85	1,137.48	-992.35	1,509.51	3.00	-3.00	0.00
4,600.00	18.31	318.90	4,225.92	1,163.02	-1,014.63	1,543.40	3.00	-3.00	0.00
4,700.00	15.31	318.90	4,321.63	1,184.82	-1,033.64	1,572.32	3.00	-3.00	0.00
4,800.00	12.31	318.90	4,418.73	1,202.80	-1,049.33	1,596.19	3.00	-3.00	0.00
4,807.44	12.09	318.90	4,426.00	1,203.99	-1,050.37	1,597.77	3.00	-3.00	0.00
<b>Price Coal</b>									
4,900.00	9.31	318.90	4,516.94	1,216.94	-1,061.66	1,614.95	3.00	-3.00	0.00
5,000.00	6.31	318.90	4,616.00	1,227.18	-1,070.60	1,628.54	3.00	-3.00	0.00
5,100.00	3.31	318.90	4,715.64	1,233.50	-1,076.11	1,636.93	3.00	-3.00	0.00
5,200.00	0.31	318.90	4,815.58	1,235.89	-1,078.19	1,640.10	3.00	-3.00	0.00

<b>Database:</b>	SWFS01	<b>Local Co-ordinate Reference:</b>	Well Kaufman 21D-24-692
<b>Company:</b>	Bill Barrett Corp.	<b>TVD Reference:</b>	KB @ 5786.00ft
<b>Project:</b>	Garfield County, Colorado	<b>MD Reference:</b>	KB @ 5786.00ft
<b>Site:</b>	Kaufman 6 Pad	<b>North Reference:</b>	True
<b>Well:</b>	Kaufman 21D-24-692	<b>Survey Calculation Method:</b>	Minimum Curvature
<b>Wellbore:</b>	Wellbore #1		
<b>Design:</b>	plan1 02jun10 smw		

Planned Survey										
Measured Depth (ft)	Inclination (°)	Azimuth (°)	Vertical Depth (ft)	+N/-S (ft)	+E/-W (ft)	Vertical Section (ft)	Dogleg Rate (°/100ft)	Build Rate (°/100ft)	Turn Rate (°/100ft)	
5,210.42	0.00	0.00	4,826.00	1,235.91	-1,078.21	1,640.12	3.00	-3.00	0.00	
Start 2640.00 hold at 5210.42 MD - Top of Gas - Kaufman 21D Top of Gas										
5,300.00	0.00	0.00	4,915.58	1,235.91	-1,078.21	1,640.12	0.00	0.00	0.00	
5,400.00	0.00	0.00	5,015.58	1,235.91	-1,078.21	1,640.12	0.00	0.00	0.00	
5,500.00	0.00	0.00	5,115.58	1,235.91	-1,078.21	1,640.12	0.00	0.00	0.00	
5,600.00	0.00	0.00	5,215.58	1,235.91	-1,078.21	1,640.12	0.00	0.00	0.00	
5,700.00	0.00	0.00	5,315.58	1,235.91	-1,078.21	1,640.12	0.00	0.00	0.00	
5,800.00	0.00	0.00	5,415.58	1,235.91	-1,078.21	1,640.12	0.00	0.00	0.00	
5,900.00	0.00	0.00	5,515.58	1,235.91	-1,078.21	1,640.12	0.00	0.00	0.00	
6,000.00	0.00	0.00	5,615.58	1,235.91	-1,078.21	1,640.12	0.00	0.00	0.00	
6,100.00	0.00	0.00	5,715.58	1,235.91	-1,078.21	1,640.12	0.00	0.00	0.00	
6,200.00	0.00	0.00	5,815.58	1,235.91	-1,078.21	1,640.12	0.00	0.00	0.00	
6,300.00	0.00	0.00	5,915.58	1,235.91	-1,078.21	1,640.12	0.00	0.00	0.00	
6,400.00	0.00	0.00	6,015.58	1,235.91	-1,078.21	1,640.12	0.00	0.00	0.00	
6,500.00	0.00	0.00	6,115.58	1,235.91	-1,078.21	1,640.12	0.00	0.00	0.00	
6,600.00	0.00	0.00	6,215.58	1,235.91	-1,078.21	1,640.12	0.00	0.00	0.00	
6,700.00	0.00	0.00	6,315.58	1,235.91	-1,078.21	1,640.12	0.00	0.00	0.00	
6,800.00	0.00	0.00	6,415.58	1,235.91	-1,078.21	1,640.12	0.00	0.00	0.00	
6,900.00	0.00	0.00	6,515.58	1,235.91	-1,078.21	1,640.12	0.00	0.00	0.00	
7,000.00	0.00	0.00	6,615.58	1,235.91	-1,078.21	1,640.12	0.00	0.00	0.00	
7,100.00	0.00	0.00	6,715.58	1,235.91	-1,078.21	1,640.12	0.00	0.00	0.00	
7,200.00	0.00	0.00	6,815.58	1,235.91	-1,078.21	1,640.12	0.00	0.00	0.00	
7,300.00	0.00	0.00	6,915.58	1,235.91	-1,078.21	1,640.12	0.00	0.00	0.00	
7,400.00	0.00	0.00	7,015.58	1,235.91	-1,078.21	1,640.12	0.00	0.00	0.00	
7,500.00	0.00	0.00	7,115.58	1,235.91	-1,078.21	1,640.12	0.00	0.00	0.00	
7,550.42	0.00	0.00	7,166.00	1,235.91	-1,078.21	1,640.12	0.00	0.00	0.00	
Rollins										
7,600.00	0.00	0.00	7,215.58	1,235.91	-1,078.21	1,640.12	0.00	0.00	0.00	
7,700.00	0.00	0.00	7,315.58	1,235.91	-1,078.21	1,640.12	0.00	0.00	0.00	
7,800.00	0.00	0.00	7,415.58	1,235.91	-1,078.21	1,640.12	0.00	0.00	0.00	
7,850.42	0.00	0.00	7,466.00	1,235.91	-1,078.21	1,640.12	0.00	0.00	0.00	
TD at 7850.42 - Kaufman 21D PBHL 165 FNL, 1958 FWL										

Design Targets										
Target Name - hit/miss target - Shape	Dip Angle (°)	Dip Dir. (°)	TVD (ft)	+N/-S (ft)	+E/-W (ft)	Northing (usft)	Easting (usft)	Latitude Longitude		
Kaufman 21D Top of Ga - plan hits target center - Circle (radius 25.00)	0.00	0.00	4,826.00	1,235.91	-1,078.21	1,621,057.12	2,402,551.07	39° 31' 10.06 N 107° 37' 4.82 W		
Kaufman 21D PBHL 165 FNL - plan hits target center - Point	0.00	0.00	7,466.00	1,235.91	-1,078.21	1,621,057.12	2,402,551.07	39° 31' 10.06 N 107° 37' 4.82 W		

<b>Database:</b>	SWFS01	<b>Local Co-ordinate Reference:</b>	Well Kaufman 21D-24-692
<b>Company:</b>	Bill Barrett Corp.	<b>TVD Reference:</b>	KB @ 5786.00ft
<b>Project:</b>	Garfield County, Colorado	<b>MD Reference:</b>	KB @ 5786.00ft
<b>Site:</b>	Kaufman 6 Pad	<b>North Reference:</b>	True
<b>Well:</b>	Kaufman 21D-24-692	<b>Survey Calculation Method:</b>	Minimum Curvature
<b>Wellbore:</b>	Wellbore #1		
<b>Design:</b>	plan1 02jun10 smw		

Formations					
Measured Depth (ft)	Vertical Depth (ft)	Name	Lithology	Dip (°)	Dip Direction (°)
3,809.32	3,521.00	Mesaverde		0.00	
4,807.44	4,426.00	Price Coal		0.00	
5,210.42	4,826.00	Top of Gas		0.00	
7,550.42	7,166.00	Rollins		0.00	

Plan Annotations				
Measured Depth (ft)	Vertical Depth (ft)	Local Coordinates		Comment
		+N/-S (ft)	+E/-W (ft)	
900.00	900.00	0.00	0.00	Start Build 3.00
1,874.76	1,832.99	183.41	-160.01	Start 2360.90 hold at 1874.76 MD
4,235.66	3,893.01	1,052.50	-918.20	Start Drop -3.00
5,210.42	4,826.00	1,235.91	-1,078.21	Start 2640.00 hold at 5210.42 MD
7,850.42	7,466.00	1,235.91	-1,078.21	TD at 7850.42