

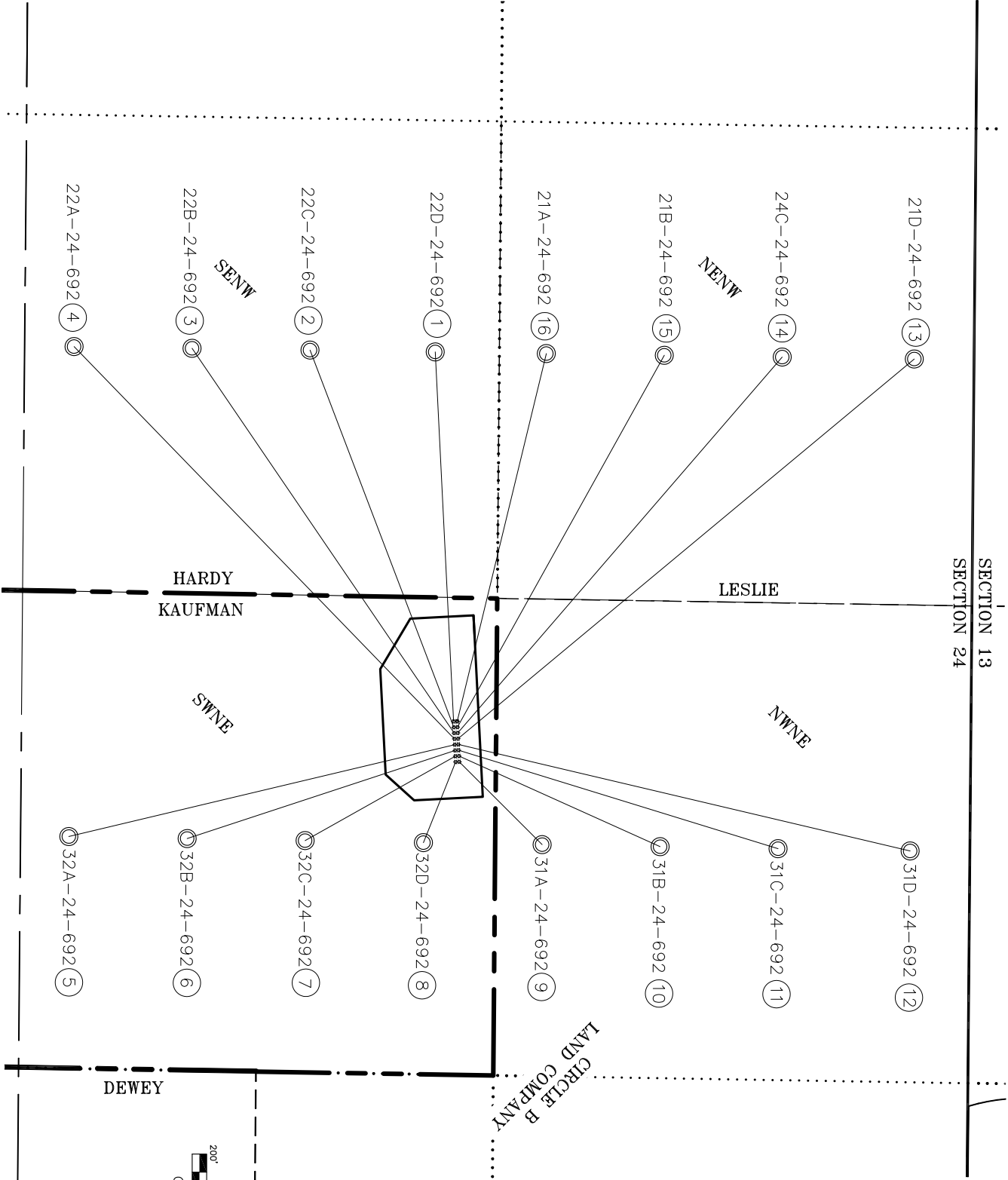
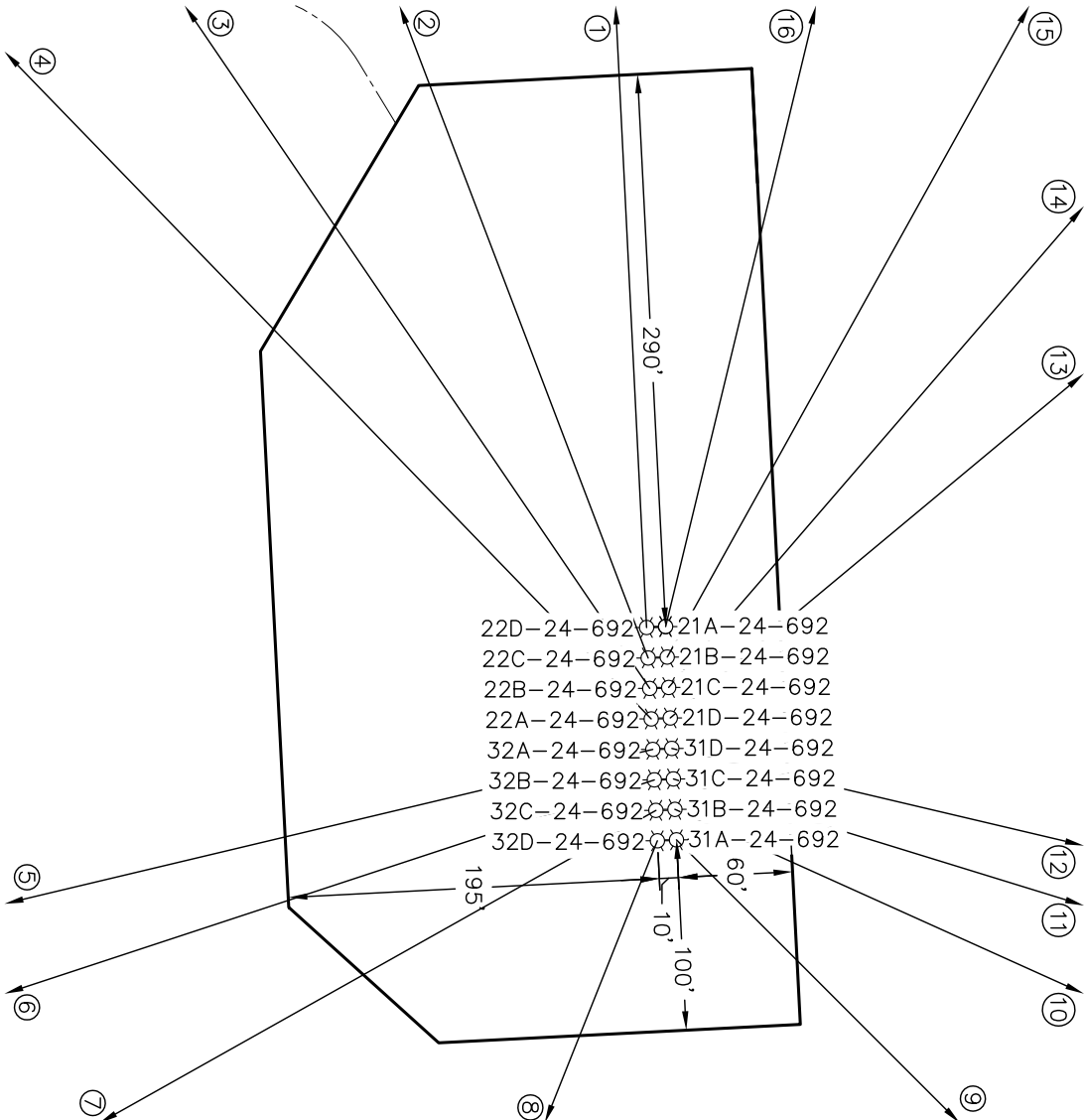
SURFACE HOLE LOCATIONS								BOTTOM HOLE LOCATIONS							
	WELL NAME	FNL	FEL	NORTHING	EASTING	LATITUDE	LONGITUDE	FNL	FEWL	NORTHING	EASTING	LATITUDE	LONGITUDE		
1	22D-24-692	1430	2294	1619783.9	2403552.7	39.516030	-107.614351	1489	1958 W	1619733.1	2402531.5	39.515826	-107.617966		
2	22C-24-692	1429	2278	1619784.7	2403568.7	39.516034	-107.614295	1835	1958 W	1619387.2	2402526.3	39.514876	-107.617956		
3	22B-24-692	1428	2262	1619785.5	2403584.7	39.516037	-107.614238	2161	1958 W	1619061.2	2402521.5	39.513981	-107.617946		
4	22A-24-692	1427	2246	1619786.3	2403600.7	39.516040	-107.614182	2487	1958 W	1618735.2	2402516.7	39.513086	-107.617936		
5	32A-24-692	1426	2230	1619787.1	2403616.6	39.516043	-107.614125	2490	1958 E	1618720.7	2403870.5	39.513133	-107.613137		
6	32B-24-692	1425	2214	1619788.0	2403632.6	39.516047	-107.614069	2163	1958 E	1619047.7	2403876.1	39.514030	-107.613145		
7	32C-24-692	1424	2198	1619788.8	2403648.6	39.516050	-107.614012	1837	1958 E	1619373.6	2403881.7	39.514925	-107.613152		
8	32D-24-692	1423	2182	1619789.6	2403664.6	39.516053	-107.613955	1510	1958 E	1619700.6	2403887.3	39.515823	-107.613159		
9	31A-24-692	1413	2183	1619799.6	2403664.1	39.516081	-107.613958	1182	1958 E	1620028.6	2403892.9	39.516724	-107.613166		
10	31B-24-692	1414	2199	1619798.8	2403648.1	39.516077	-107.614014	856	1958 E	1620354.5	2403898.5	39.517619	-107.613173		
11	31C-24-692	1415	2215	1619798.0	2403632.1	39.516074	-107.614071	530	1958 E	1620680.5	2403904.1	39.518514	-107.613180		
12	31D-24-692	1416	2231	1619797.1	2403616.1	39.516071	-107.614128	165	1958 E	1621045.5	2403910.3	39.519516	-107.613188		
13	21D-24-692	1417	2247	1619796.3	2403600.2	39.516068	-107.614184	165	1958 W	1621057.0	2402551.0	39.519461	-107.618006		
14	21C-24-692	1418	2263	1619795.5	2403584.2	39.516064	-107.614241	530	1958 W	1620692.1	2402545.6	39.518459	-107.617995		
15	21B-24-692	1419	2279	1619794.7	2403568.2	39.516061	-107.614297	856	1958 W	1620366.1	2402540.8	39.517564	-107.617985		
16	21A-24-692	1420	2295	1619793.9	2403552.2	39.516058	-107.614354	1182	1958 W	1620040.1	2402536.0	39.516669	-107.617975		


WELL INTERFERENCE EXHIBIT

KAUFMAN PAD 6

NAD 83 COLORADO CENTRAL ZONE

SURFACE HOLE LOCATIONS





ECLIPSE

surveying

111 E. THIRD ST., SUITE 208 RIFLE, CO 81650

(970) 625-3048

REV. DATE:

SCALE:

DATE:

SHEET:

PROJECT:

DFT:


1" = 400'

05/28/10

1 OF 1

KAUFMAN6

JAK



Bill Barrett Corporation

SW1/4NE1/4, SECTION 24

T. 6 S., R. 92 W. of the 6th. P.M.

GARFIELD COUNTY, COLORADO

*NOTE: THE FINISHED PAD ELEVATION IS 5762.5'