

# LEGEND:

- |                   |                         |
|-------------------|-------------------------|
| ⊗ DISPOSAL WELLS  | ⊗ WATER WELLS           |
| ● PRODUCING WELLS | ⊗ ABANDONED WELLS       |
| ⊖ SHUT IN WELLS   | ⊖ TEMPORARILY ABANDONED |



**Uintah Engineering & Land Surveying**  
 85 South 200 East Vernal, Utah 84078  
 (435) 789-1017 \* FAX (435) 789-1813



## Encana OIL & GAS (USA) INC.

**CB FED. DH08-29 & DH03-21 (A28 6100)**  
**SECTION 28, T6S, R100W, 6th P.M.**  
 NE 1/4 NE 1/4

SHEET 10 OF 12

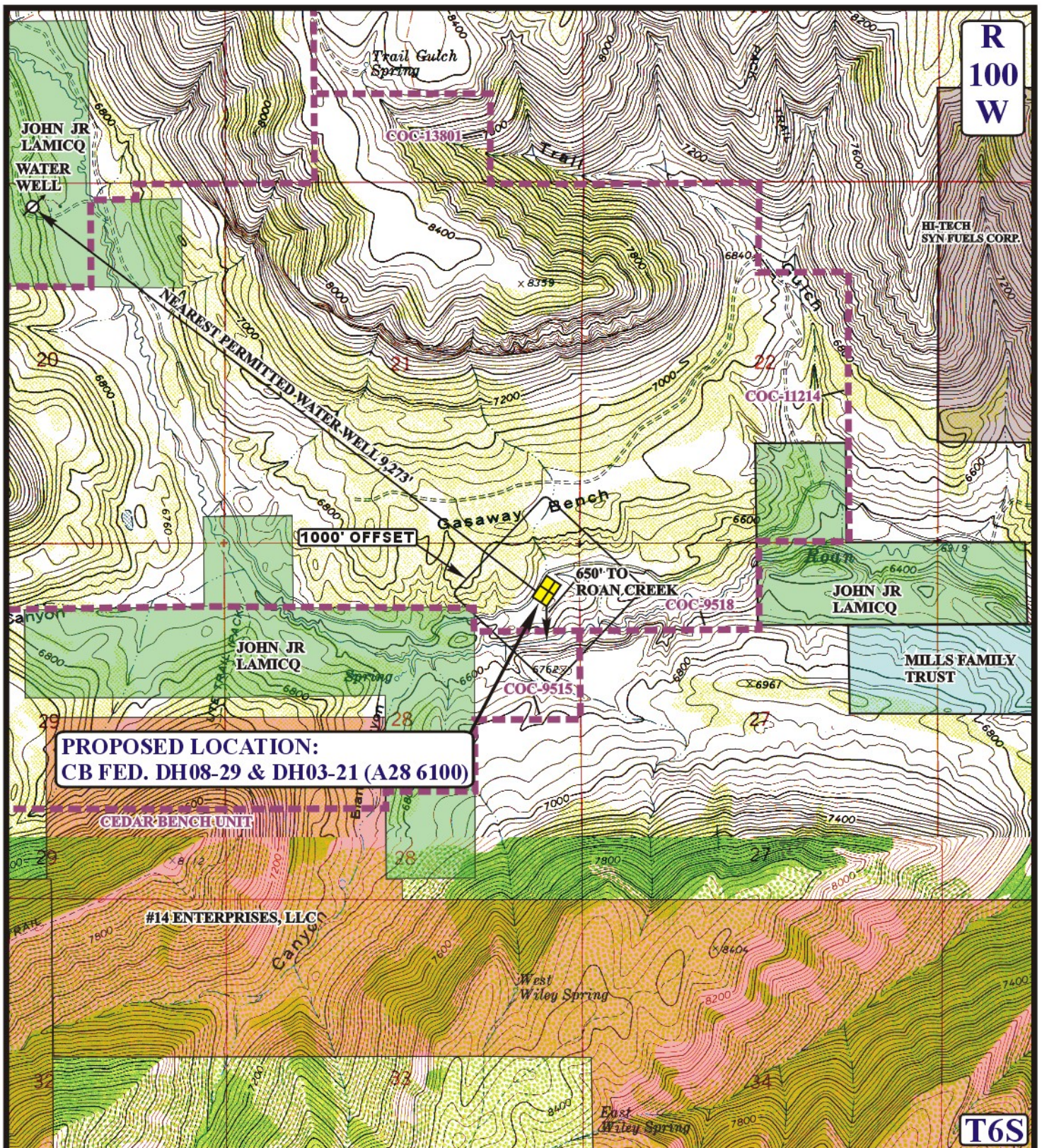
**TOPOGRAPHIC**  
**MAP**

**3 11 10**  
 MONTH DAY YEAR

SCALE: 1" = 2000' DRAWN BY: J.L.G. REVISED: 08-03-10







# LEGEND:

- EXISTING ROAD
- WATER WELL

Encana OIL & GAS (USA) INC.

CB FED. DH08-29 & DH03-21 (A28 6100)

SECTION 28, T6S, R100W, 6th P.M.

NE 1/4 NE 1/4

SHEET 12 OF 12



**Uintah Engineering & Land Surveying**  
 85 South 200 East Vernal, Utah 84078  
 (435) 789-1017 \* FAX (435) 789-1813



**HYDROLOGY**  
**MAP**

SCALE: 1" = 2000'

DRAWN BY: J.L.G.

3 30 10  
 MONTH DAY YEAR

REVISED: 3-8-10

