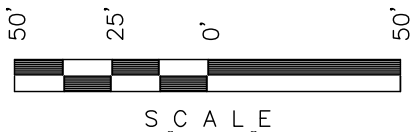


Encana OIL & GAS (USA) INC.  
ADDENDUM TO LEGAL PLAT FOR ALT. PAD  
CB FED. DH08-29 & DH03-21 (A28 6100)  
SECTION 28, T6S, R100W, 6th P.M.  
NE 1/4 NE 1/4

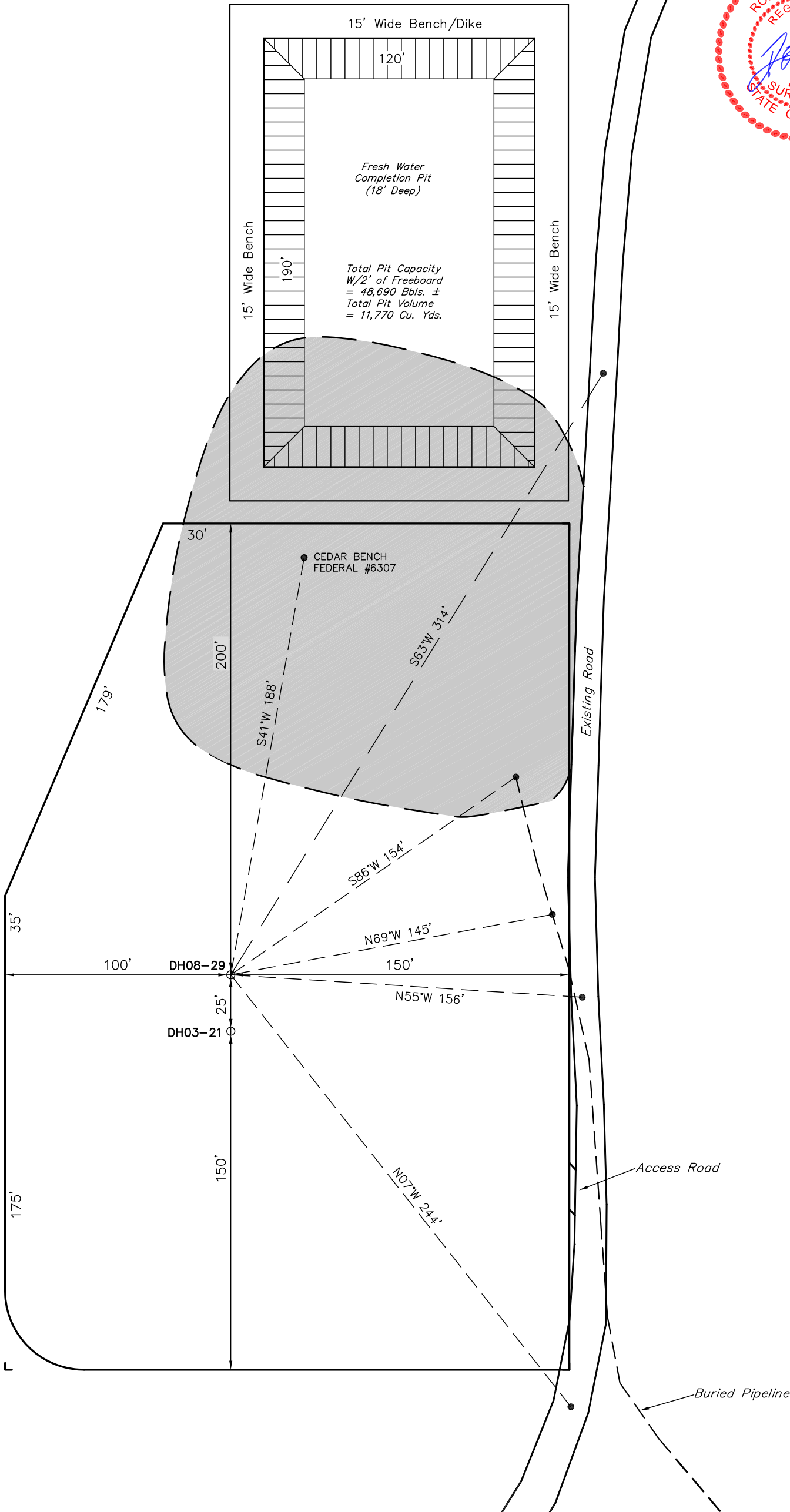


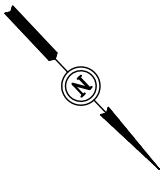
SCALE

Sheet 1c of 12

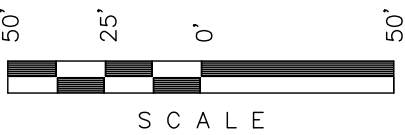


SCALE: 1" = 60'  
DATE: 03-02-10  
DRAWN BY: D.R.B.  
Rev: 03-22-10 D.R.B.  
Rev: 04-22-10 D.R.B.  
Rev: 07-13-10 D.R.B.





Encana OIL & GAS (USA) INC.  
WELL PAD INTERFERENCE PLAT FOR ALT. PAD  
CB FED. DH08-29 & DH03-21 (A28 6100)  
SECTION 28, T6S, R100W, 6th P.M.  
NE 1/4 NE 1/4

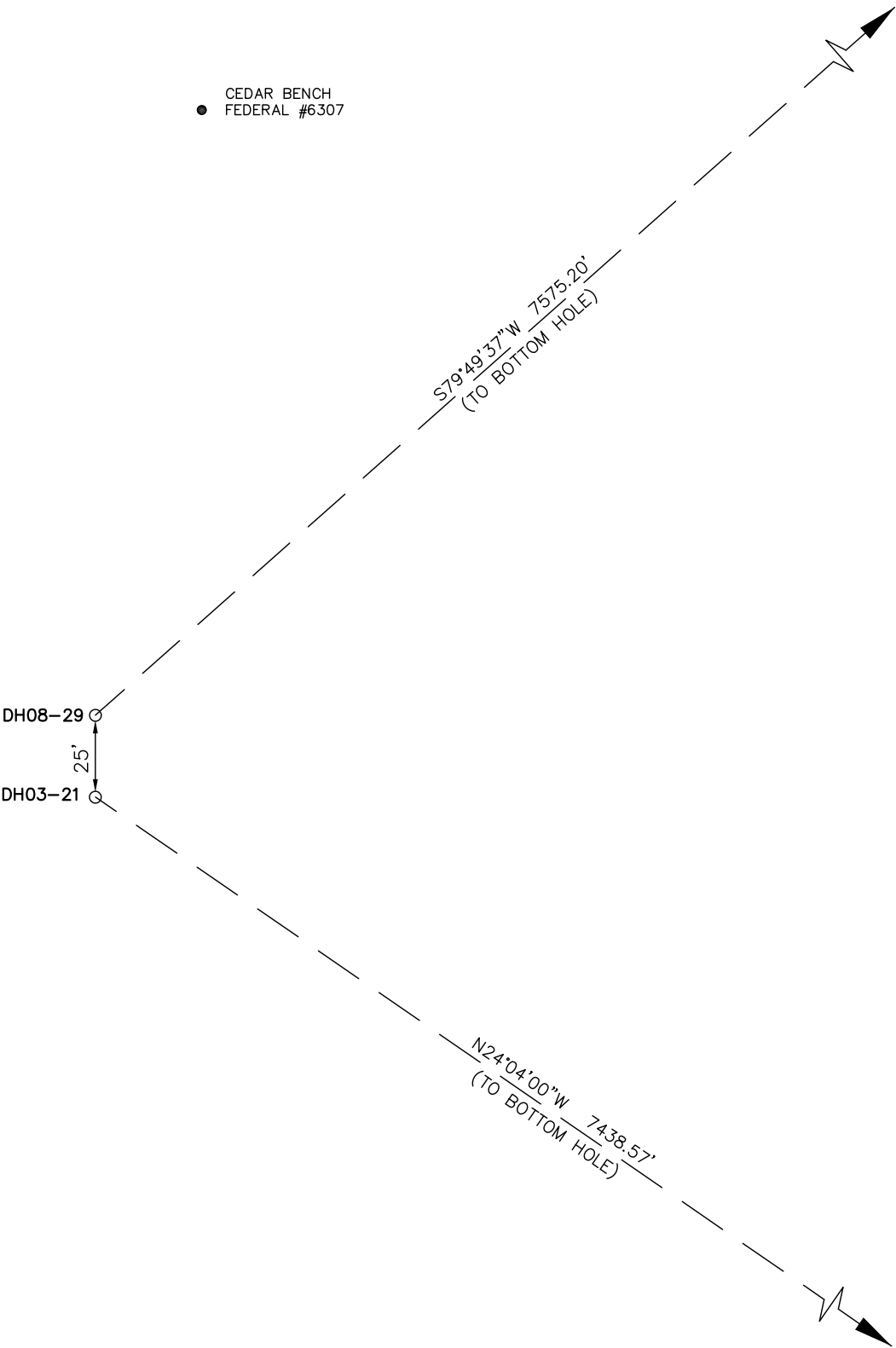


Sheet 2 of 12

SCALE: 1" = 50'  
DATE: 03-02-10  
DRAWN BY: D.R.B.  
Rev: 03-22-10 D.R.B.  
Rev: 04-22-10 D.R.B.  
Rev: 06-29-10 D.R.B.  
Rev: 07-13-10 D.R.B.



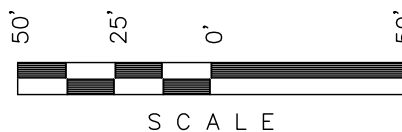
● CEDAR BENCH  
FEDERAL #6307



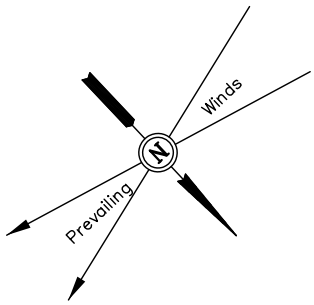
Encana OIL & GAS (USA) INC.

CONSTRUCTION LAYOUT FOR ALT. PAD  
CB FED. DH08-29 & DH03-21 (A28 6100)  
SECTION 28, T6S, R100W, 6th P.M.  
NE 1/4 NE 1/4

Sheet 3 of 12



SCALE



SCALE: 1" = 50'  
DATE: 03-02-10  
DRAWN BY: D.R.B.  
Rev: 05-21-10 D.R.B.  
Rev: 06-24-10 D.R.B.  
Rev: 07-12-10 D.R.B.  
Rev: 07-13-10 D.R.B.

RIPRAP  
Install 18" Culvert

Sta. 5+90

Sta. 4+95

Sta. 4+00

Sta. 3+75

Sta. 1+75

Sta. 0+00

LEGEND:

- 1 - OVERFLOW
- 2 - SEWER TANK
- 3 - LIFT STATION
- 4 - SEWER LINE
- 5 - WATER TANK
- 6 - FREEZER
- 7 - STORAGE
- 8 - GENERATOR
- 9 - FUEL
- 10 - TRANSFORMER

NOTE:  
Flare Pit is to  
be located a min.  
of 100' from the  
Well Head.

SWMP LEGEND:

- ECB - EROSION CONTROL
- BLANKET
- LS - LEVEL SPREADER
- SedR - SEDIMENT
- RESERVOIR
- SCE - STABILIZED
- CONSTRUCTION
- ENTRANCE
- SL - SLASH
- ST - SEDIMENT TRAP
- T - TERRACING
- TB - TOE BERM
- VB - VEGETATED
- W - BUFFER
- WATTLE

LEGEND:

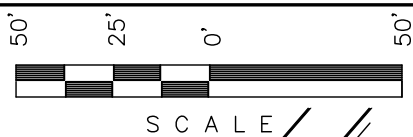
- ST - Septic Tank
- G - Generator
- WT - Water Tank

NOTE:  
Wattle to be installed  
25' downhill of slash  
and topsoil stockpile.

Elev. Ungraded Ground At DH129-1SW Loc. Stake = 6653.8'  
FINISHED GRADE ELEV. AT DH129-1SW LOC. STAKE = 6654.1'

UINTAH ENGINEERING & LAND SURVEYING  
85 So. 200 East \* Vernal, Utah 84078 \* (435) 789-1017

Encana OIL & GAS (USA) INC.  
PRE-CONSTRUCTION LAYOUT FOR ALT. PAD  
CB FED. DH08-29 & DH03-21 (A28 6100)  
SECTION 28, T6S, R100W, 6th P.M.  
NE 1/4 NE 1/4



S C A L E

RipRap

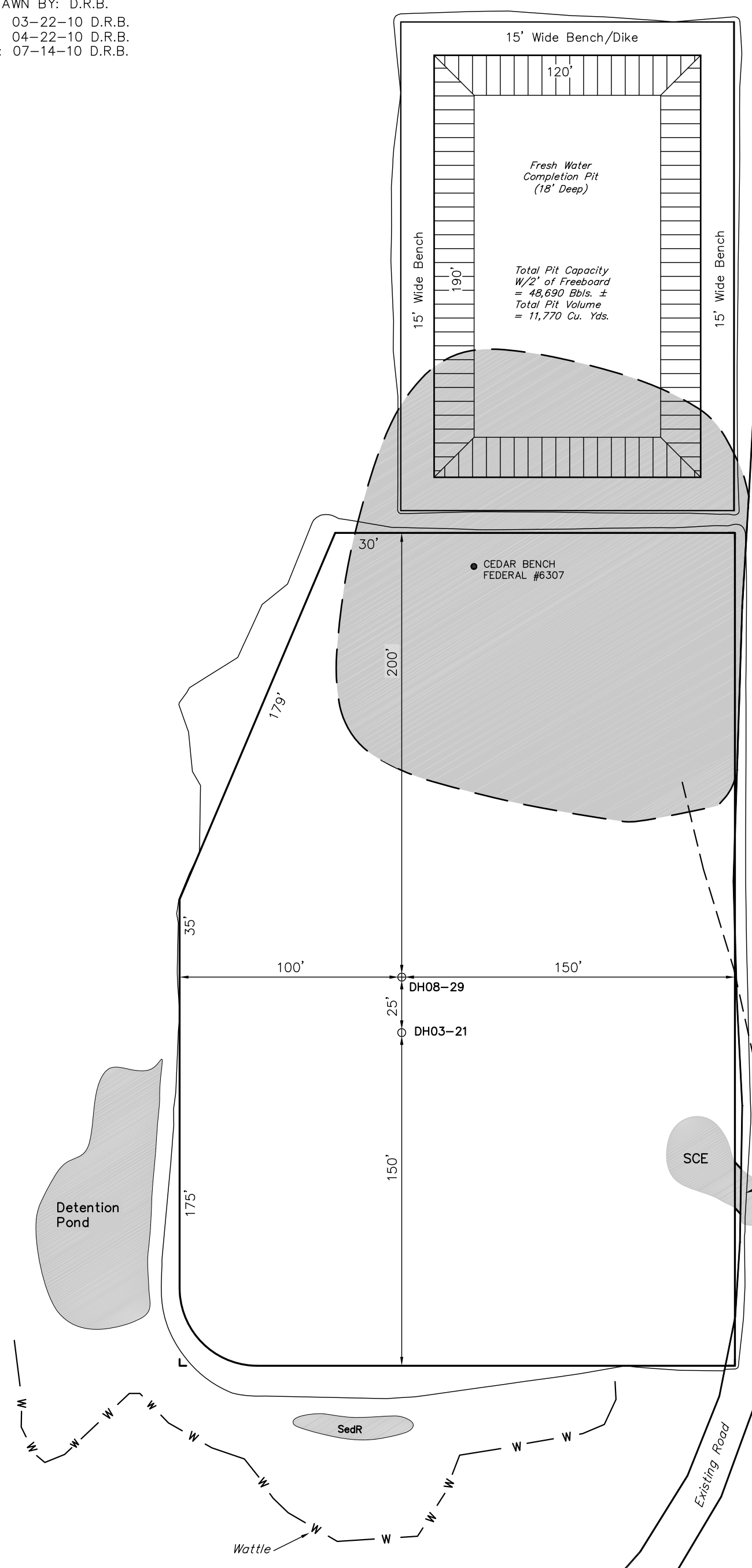
Install 18" Culvert

ST

Sheet 3a of 12



SCALE: 1" = 50'  
DATE: 03-02-10  
DRAWN BY: D.R.B.  
Rev: 03-22-10 D.R.B.  
Rev: 04-22-10 D.R.B.  
Rev: 07-14-10 D.R.B.



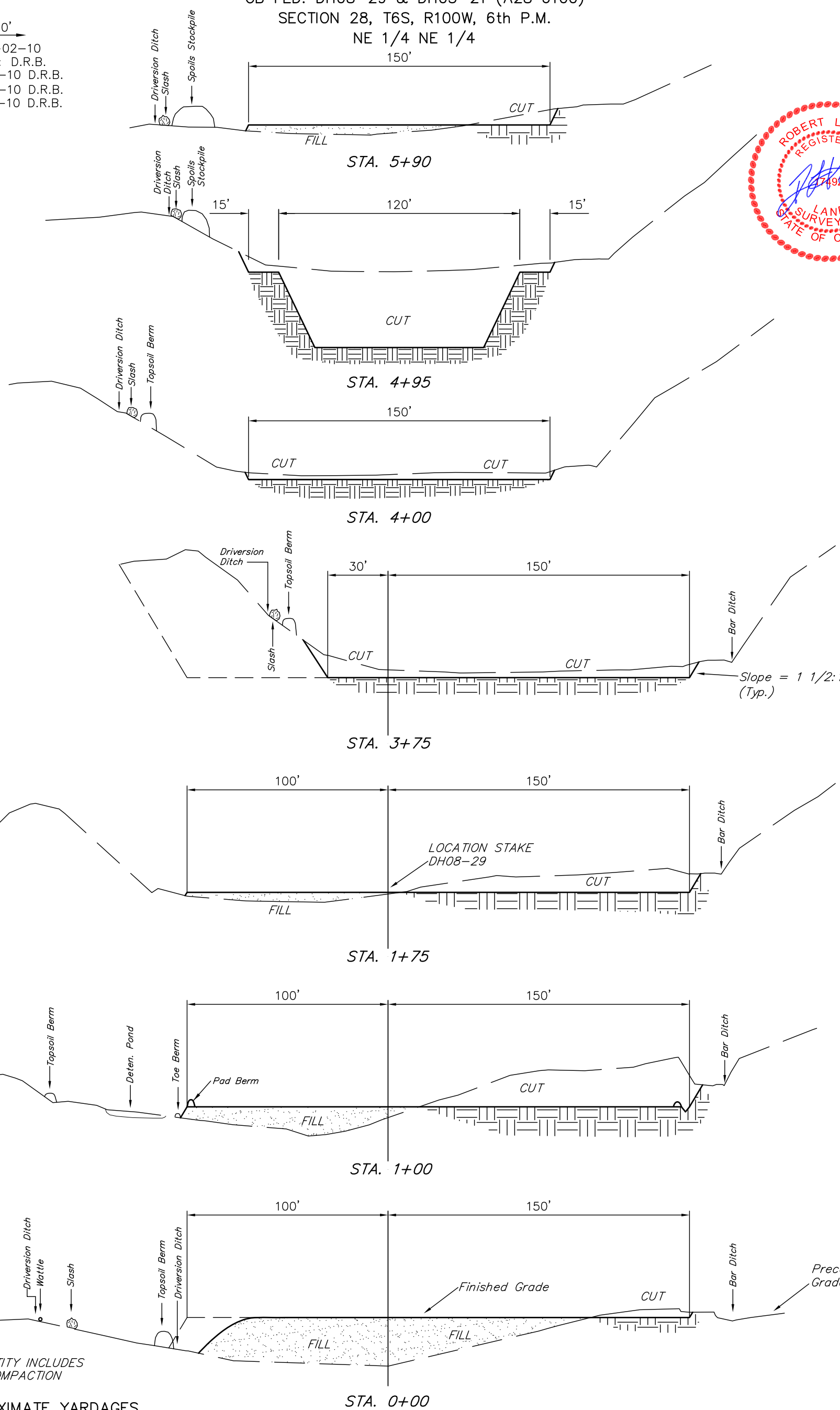
- SWMP LEGEND:
- SedR - SEDIMENT RESERVOIR
  - SCE - STABILIZED CONSTRUCTION ENTRANCE
  - ST - SEDIMENT TRAP
  - W - WATTLE



CONSTRUCTION LAYOUT CROSS SECTION FOR ALT. PAD  
CB FED. DH08-29 & DH03-21 (A28 6100)  
SECTION 28, T6S, R100W, 6th P.M.  
NE 1/4 NE 1/4

1" = 20'  
X-Section  
Scale  
1" = 50'

DATE: 03-02-10  
DRAWN BY: D.R.B.  
Rev: 03-22-10 D.R.B.  
Rev: 04-22-10 D.R.B.  
Rev: 07-13-10 D.R.B.



\* NOTE:  
FILL QUANTITY INCLUDES  
5% FOR COMPACTION

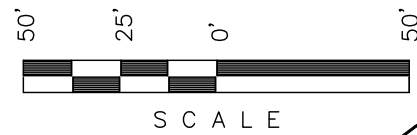
APPROXIMATE YARDAGES

(6") Topsoil Stripping = 2,310 Cu. Yds.  
(New Construction Only)  
Remaining Location = 13,960 Cu. Yds.  
TOTAL CUT = 16,270 CU.YDS.  
FILL = 5,360 CU.YDS.

EXCESS MATERIAL = 10,910 Cu. Yds.  
Topsoil & Pit Backfill = 8,200 Cu. Yds.  
(1/2 Pit Vol.)  
EXCESS UNBALANCE = 2,710 Cu. Yds.  
(After Interim Rehabilitation)

NOTE:  
Per NRCS U.S. Soil Survey for Rio  
Blanco County Area, CO. Site has  
Channery, Sandy Loam, and  
Unweathered Bedrock.

Encana OIL & GAS (USA) INC.  
TYPICAL RIG LAYOUT FOR ALT. PAD  
CB FED. DH08-29 & DH03-21 (A28 6100)  
SECTION 28, T6S, R100W, 6th P.M.  
NE 1/4 NE 1/4



Sheet 5 of 12

SCALE: 1" = 50'  
DATE: 03-02-10  
DRAWN BY: D.R.B.  
Rev: 03-22-10 D.R.B.  
Rev: 04-22-10 D.R.B.  
Rev: 05-21-10 D.R.B.  
Rev: 06-24-10 D.R.B.  
Rev: 07-13-10 D.R.B.



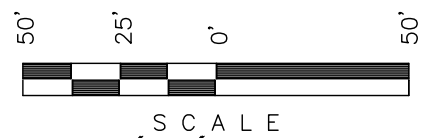
LEGEND:  
1 - OVERFLOW  
2 - SEWER TANK  
3 - LIFT STATION  
4 - SEWER LINE  
5 - WATER TANK  
6 - FREEZER  
7 - STORAGE  
8 - GENERATOR  
9 - FUEL  
10 - TRANSFORMER

NOTE:  
Flare Pit is to be located a min. of 100' from the Well Head.

SWMP LEGEND:  
SedR - SEDIMENT RESERVOIR  
SCE - STABILIZED CONSTRUCTION ENTRANCE  
ST - SEDIMENT TRAP  
W - WATTLE

Legend:  
ST = Septic Tank  
G = Generator  
WT = Water Tank

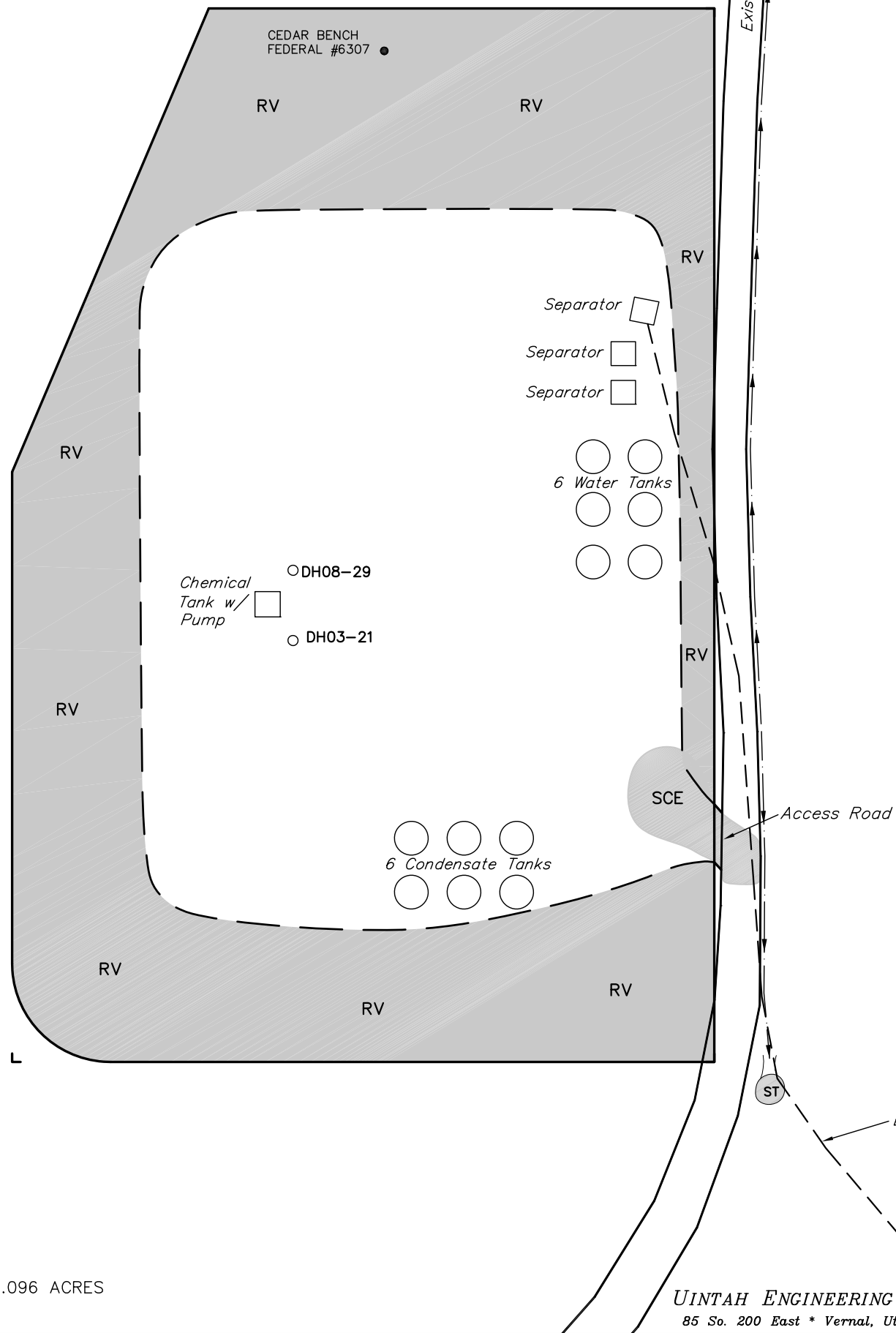
Encana OIL & GAS (USA) INC.  
PRODUCTION SCHEMATIC FOR ALT. PAD  
CB FED. DH08-29 & DH03-21 (A28 6100)  
SECTION 28, T6S, R100W, 6th P.M.  
NE 1/4 NE 1/4



Sheet 6 of 12



- LEGEND:
- RV - REVEGETATION
  - SCE - STABILIZED CONSTRUCTION ENTRANCE
  - ST - SEDIMENT TRAP



APPROXIMATE ACREAGES  
UN-RECLAIMED AREA = ± 1.096 ACRES