

Encana OIL & GAS (USA) INC.
CB FED. DH08-29 & DH03-21 (A28 6100)
LOCATED IN GARFIELD COUNTY, COLORADO
SECTION 28, T6S, R100W, 6th P.M.

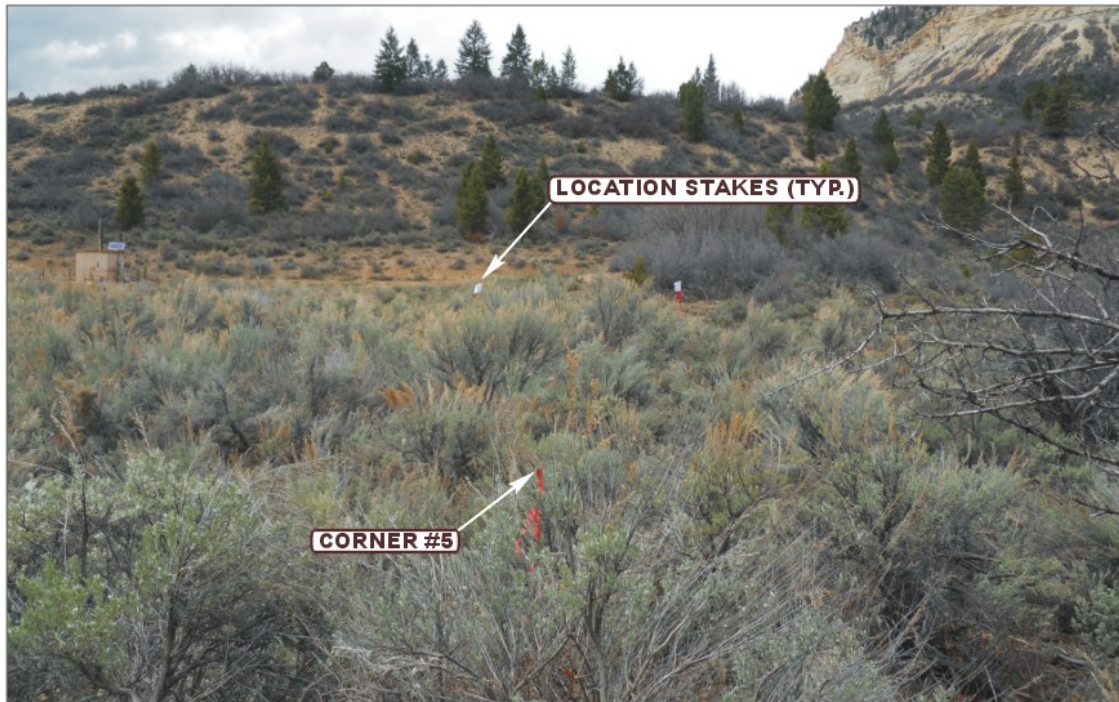


PHOTO: VIEW FROM CORNER #5 TO LOCATION STAKES

CAMERA ANGLE: NORTHWESTERLY



PHOTO: VIEW FROM BEGINNING OF PROPOSED ACCESS

CAMERA ANGLE: SOUTHEASTERLY



UELS

Uintah Engineering & Land Surveying
85 South 200 East Vernal, Utah 84078
(435) 789-1017 * FAX (435) 789-1813

LOCATION PHOTOS

05 **18** **10**
MONTH DAY YEAR

TAKEN BY: D.K.

DRAWN BY: J.L.G.

REVISED: 8-3-10

PHOTO
P1

Encana OIL & GAS (USA) INC.
CB FED. DH08-29 & DH03-21 (A28 6100)
LOCATED IN GARFIELD COUNTY, COLORADO
SECTION 28, T6S, R100W, 6th P.M.



PHOTO: VIEW OF LOCATION STAKES

CAMERA ANGLE: NORTHERLY



PHOTO: VIEW OF LOCATION STAKES

CAMERA ANGLE: EASTERLY



U **E** **L** **S** **U**intah Engineering & Land Surveying
85 South 200 East Vernal, Utah 84078
(435) 789-1017 * FAX (435) 789-1813

LOCATION PHOTOS

05 **18** **10**
MONTH DAY YEAR

TAKEN BY: D.K.

DRAWN BY: J.L.G.

REVISED: 8-3-10

PHOTO
P2

Encana OIL & GAS (USA) INC.
CB FED. DH08-29 & DH03-21 (A28 6100)
LOCATED IN GARFIELD COUNTY, COLORADO
SECTION 28, T6S, R100W, 6th P.M.



PHOTO: VIEW OF LOCATION STAKES

CAMERA ANGLE: SOUTHERLY



PHOTO: VIEW OF LOCATION STAKES

CAMERA ANGLE: WESTERLY



UELS Uintah Engineering & Land Surveying
85 South 200 East Vernal, Utah 84078
(435) 789-1017 * FAX (435) 789-1813

LOCATION PHOTOS

05 **18** **10**
MONTH DAY YEAR

TAKEN BY: D.K.

DRAWN BY: J.L.G.

REVISED: 8-3-10

PHOTO
P3