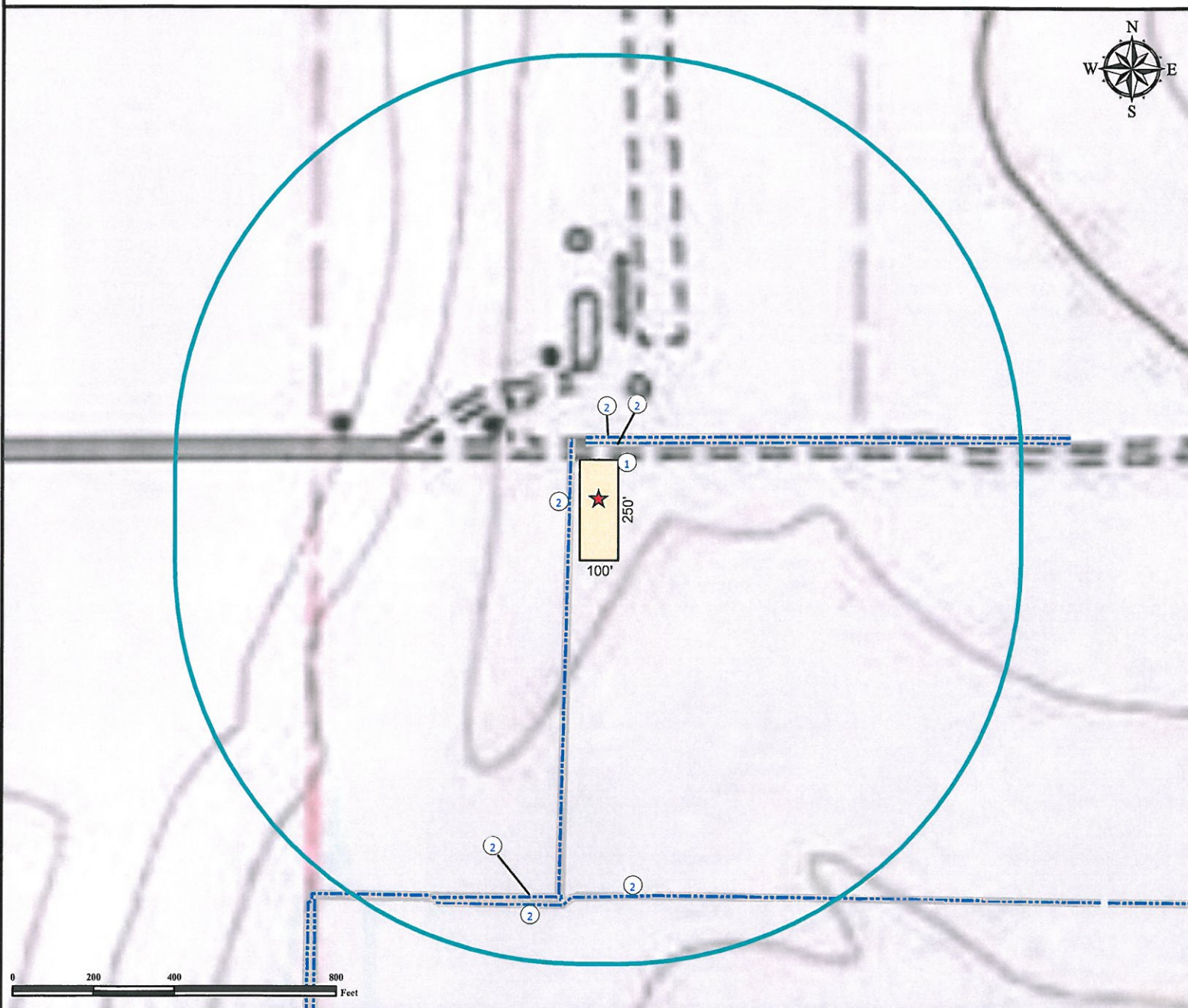


Hydrology Map

KAISER 6-10 Facility

SECTION 10, TOWNSHIP 6 NORTH, RANGE 65 WEST OF THE 6TH PRINCIPAL MERIDIAN



1. Proposed/Existing KAISER 6-10 Facility.
2. Concrete Irrigation Ditches are $\pm 70'$ W, $\pm 137'$ N, $\pm 150'$ N, $\pm 982'$ S, $\pm 992'$ SW, and $\pm 1016'$ SW.

Legend

- | | |
|---|----------------------|
| Reference Point | 1000' Radius |
| Proposed/Existing Facility is 250' x 100' | Concrete Ditch/Canal |

Reference Location

** All Measurements are Made from Reference Point (NAD83) **

LAT: 40.508140° LONG: -104.651597°



Use our resources to find yours!
www.petro-fs.com
 (303) 928-7128

Field Date: 06/24/2010
 Drafting Date: 06/26/2010
 Drafter: DMM
 Checked By: BHF

Data Sources:
 - Topo courtesy of USGS

Prepared for:



BAYSWATER
 EXPLORATION AND PRODUCTION, LLC