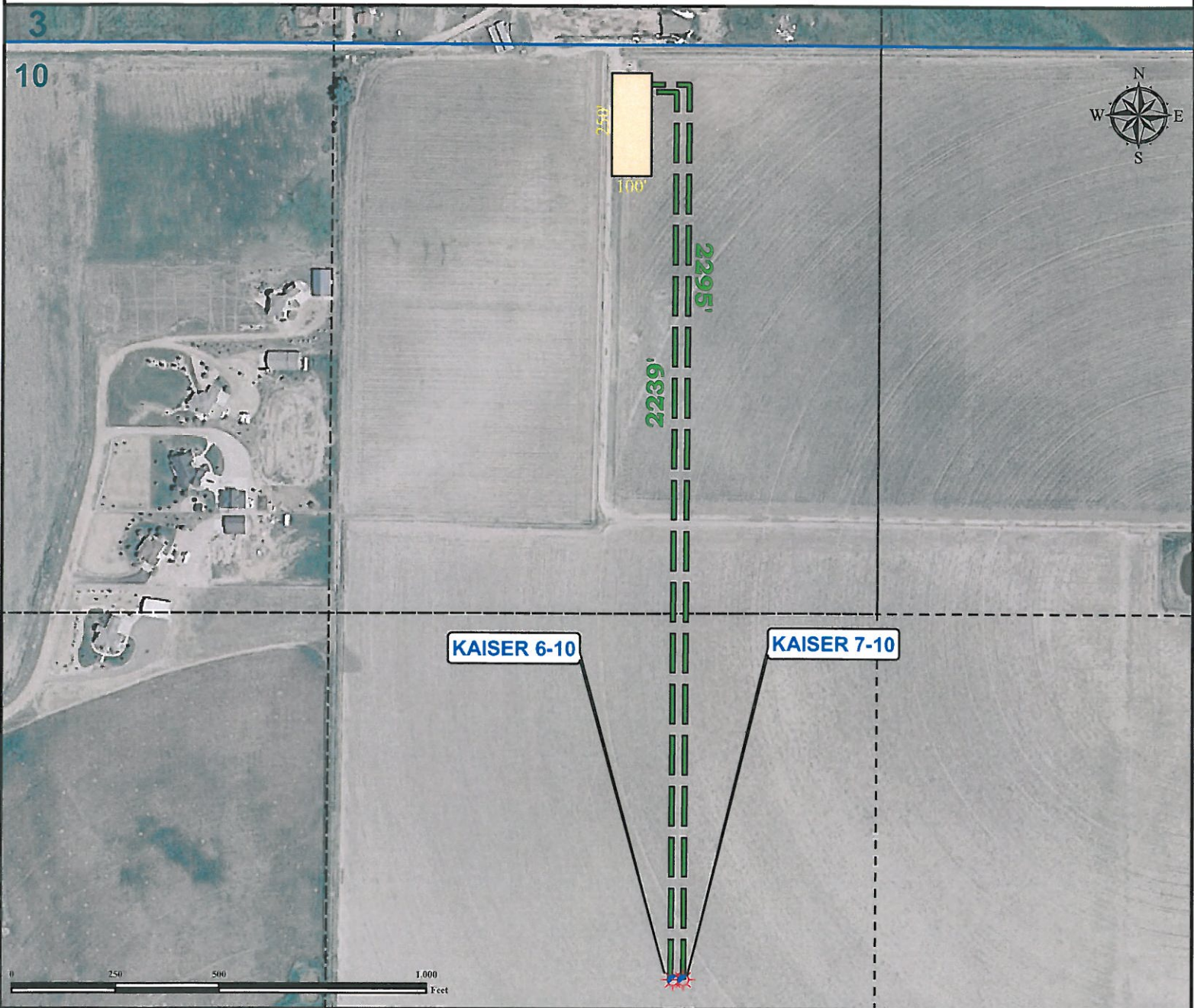


# Proposed Flowline Exhibit KAISER 6-10 Facility

SECTION 10, TOWNSHIP 6 NORTH, RANGE 65 WEST OF THE 6TH PRINCIPAL MERIDIAN



## Legend



Proposed Well



Reference Point



Proposed/Existing Facility is 250' x 100'



Proposed Flowline

Perennial Stream



Quarter Quarter Boundary



Section Boundary

## Reference Location

\*\* All Measurements are Made from Reference Point ★ (NAD83) \*\*

LAT: 40.508140° LONG: -104.651597°

Surface Use: Cropland



Use our resources to find yours!

[www.petro-fs.com](http://www.petro-fs.com)

(303) 928-7128

Field Date: 06/15/2010  
Drafting Date: 08/04/2010  
Drafter: KLM  
Checked By: BHF

## Data Sources:

- Aerial courtesy of NAIP (2009)  
- Colorado Division of Water Resources

Prepared for:



BAYSWATER  
EXPLORATION AND PRODUCTION, LLC