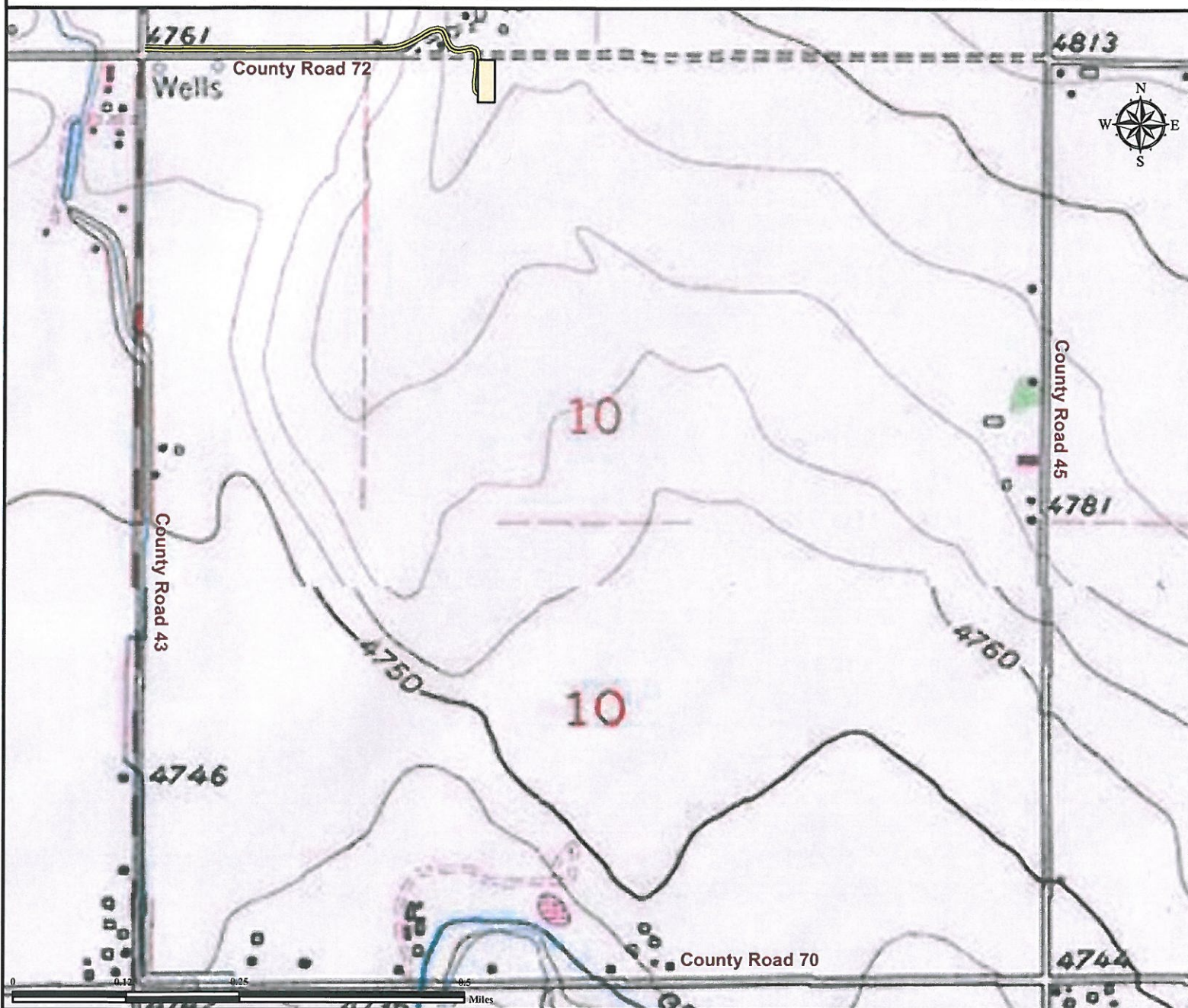


Access Road Map

KAISER 6-10 Facility

SECTION 10, TOWNSHIP 6 NORTH, RANGE 65 WEST OF THE 6TH PRINCIPAL MERIDIAN



Proposed Access to KAISER 6-10 Facility; From the junction of County Road 43 and County Road 72, head east on County Road 72 approximately 3/10 mile. Follow access northeast for about a 1/10 of a mile and then south to facility location.

Legend

★ Reference Point

Proposed Facility

Water Body

Flood Plain

1000' Radius

Perennial Stream

Access Road

Reference Location

** All Measurements are
Made from Reference
Point ★ (NAD83) **

LAT: 40.508140° LONG: -104.651597°



Use our resources to find yours!
www.petro-fs.com
(303) 928-7128

Field Date: 06/24/2010
Drafting Date: 06/26/2010
Drafter: DMM
Checked By: BHF

Data Sources:
- Topo Courtesy of USGS

Prepared for:



BAYSWATER
EXPLORATION AND PRODUCTION, LLC