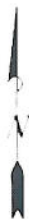


EnCana Oil & Gas (USA) Inc.

**Well Pad (K20OU) Expansion
SEC. 20, T8S, R96W, 6th P.M.**

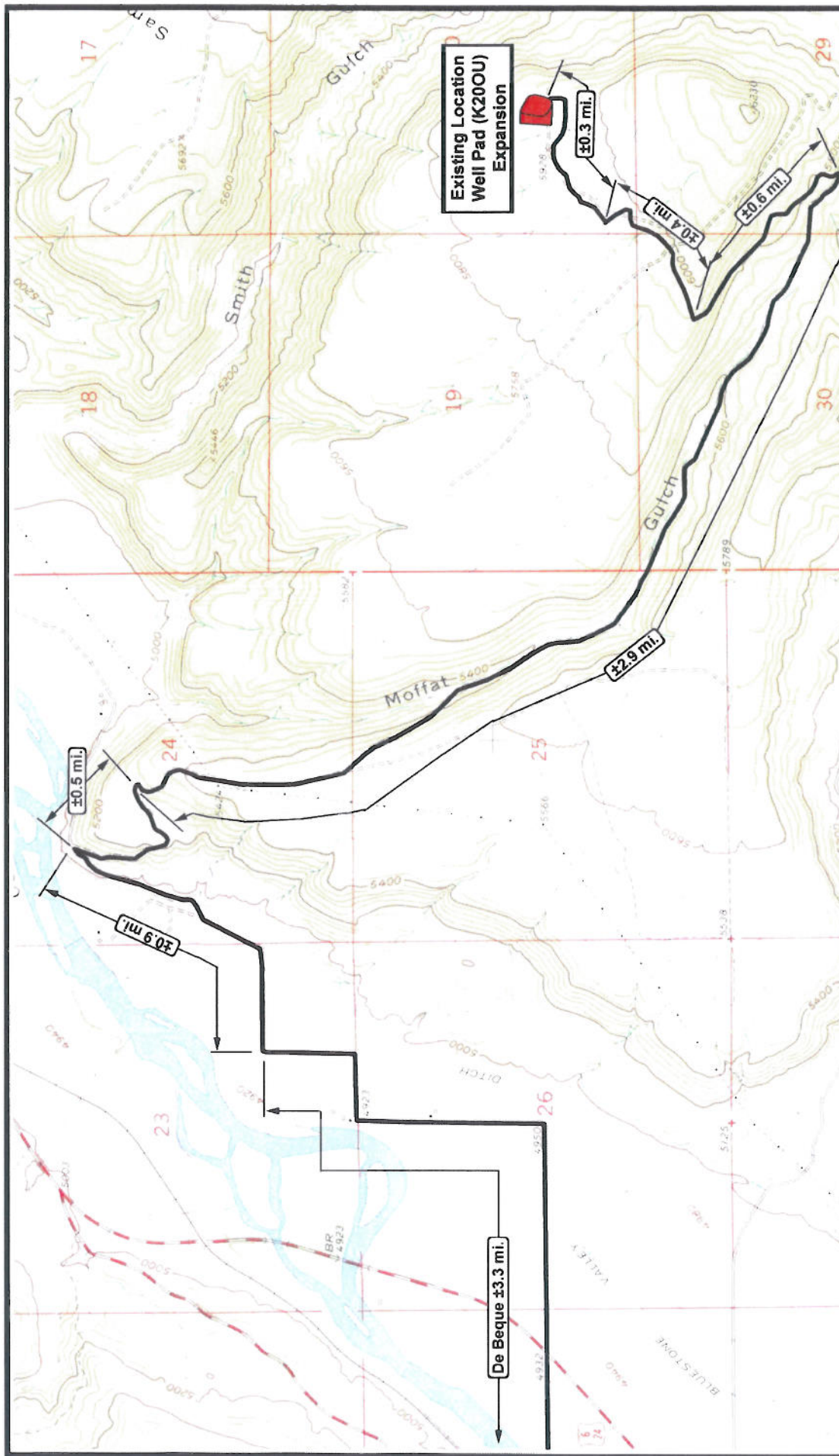


**Tri-State
Land Surveying Inc.**
(435) 781-2501
180 North Vernal Ave. Vernal, Utah 84078

**SCALE: 1 = 100,000
DRAWN BY: JAS
DATE: 07-07-2010**

Legend
Existing Road

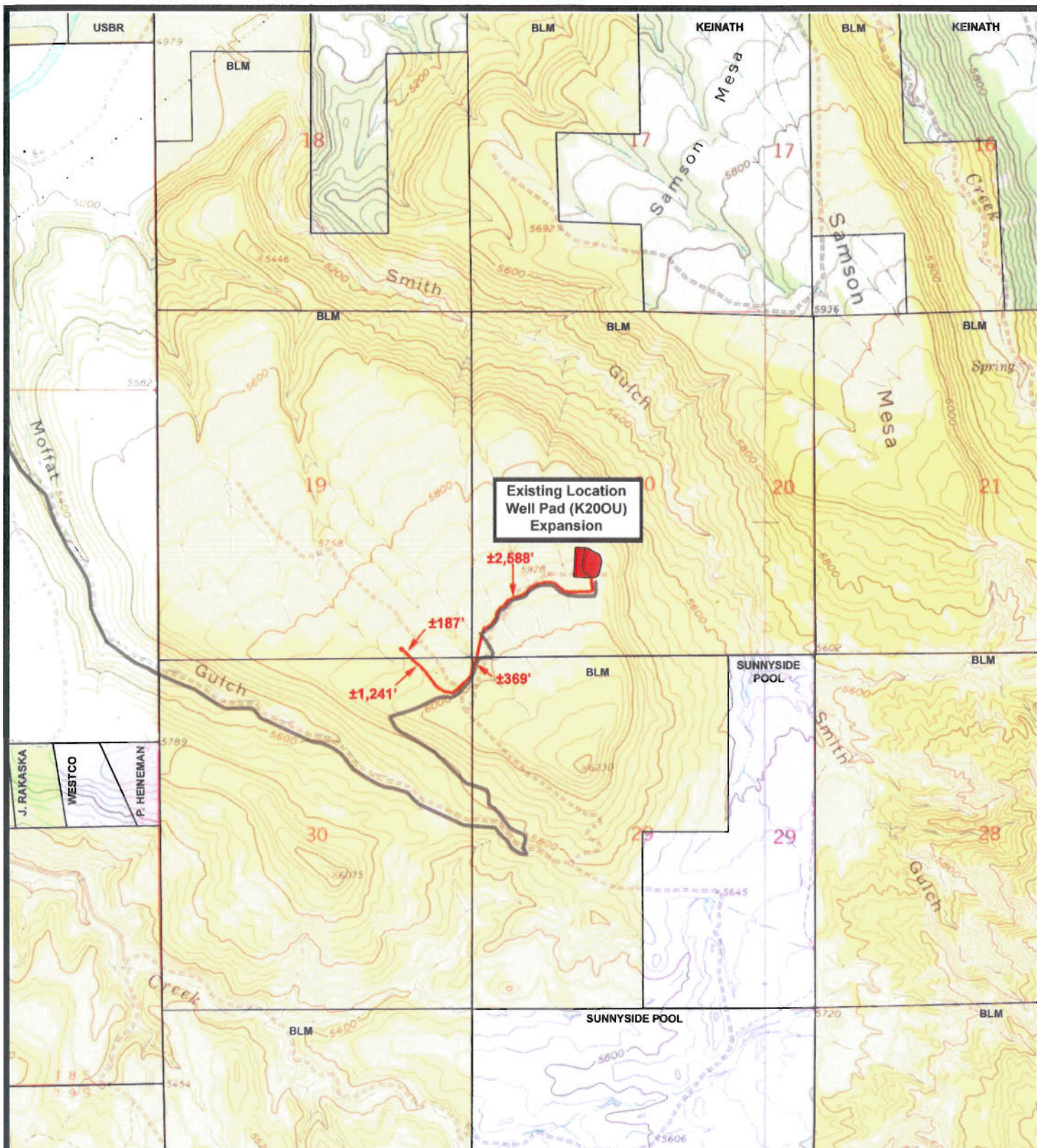
TOPOGRAPHIC MAP
"A"
SHEET 9 OF 11



Existing Location
Well Pad (K200U)
Expansion

<p>Legend</p>	<p>Tri-State Land Surveying Inc. (435) 781-2501 180 North Vernal Ave. Vernal, Utah 84078</p>	<p>SCALE: 1" = 2,000'</p>	<p>SHEET 10 OF 11</p>
		<p>DRAWN BY: JAS</p>	<p>DATE: 07-07-2010</p>

<p>EnCana Oil & Gas (USA) Inc.</p>	<p>Well Pad (K200U) Expansion SEC. 20, T8S, R96W, 6th P.M.</p>
---	--



EnCana Oil & Gas (USA) Inc.

**Well Pad (K20OU) Expansion
SEC. 20, T8S, R96W, 6th P.M.**



**Tri-State
Land Surveying Inc.**
(435) 781-2501
180 North Vernal Ave. Vernal, Utah 84078

SCALE: 1" = 2,000'
DRAWN BY: JAS
DATE: 07-07-2010

Legend
— Roads
— Existing Gas Line
- - - Proposed Gas Line

TOPOGRAPHIC MAP SHEET
"D" **11**
OF 11