

Steil Surveying Services, LLC

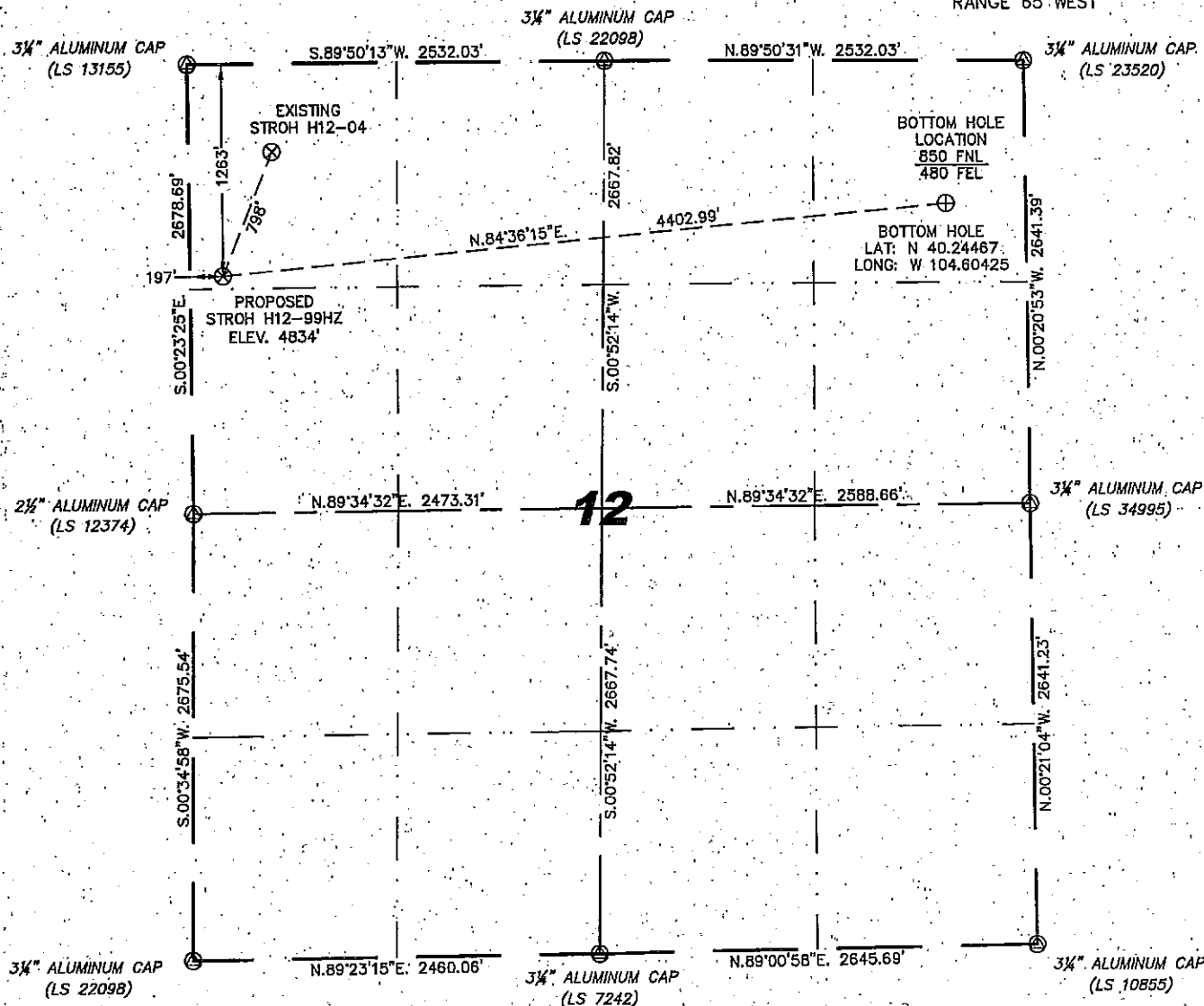
1102 West 19th Street P.O. BOX 2073

Cheyenne, Wyoming 82009

WELL LOCATION CERTIFICATE

THIS MAP DOES NOT REPRESENT A BOUNDARY SURVEY

SECTION 12
TOWNSHIP 3 NORTH
RANGE 65 WEST



0 1000
Scale: 1" = 1000'

IN ACCORDANCE WITH A REQUEST FROM MATT CAMPBELL - NOBLE ENERGY INC, STEIL SURVEYING SERVICES, LLC HAS DETERMINED THE LOCATION OF THE STROH H12-99HZ WELL TO BE 1263' FNL, 197' FWL, AS MEASURED AT NINETY (90) DEGREES FROM THE SECTION LINES, SECTION 12, TOWNSHIP 3 NORTH, RANGE 65 WEST, 6TH PRINCIPLE MERIDIAN, WELD COUNTY, COLORADO.

I HEREBY CERTIFY THAT THIS WELL LOCATION CERTIFICATE WAS PREPARED BY ME, OR UNDER MY DIRECT SUPERVISION, THAT THE FIELD WORK WAS COMPLETED ON 08/02/2010, FOR AND ON BEHALF OF NOBLE ENERGY INC, THAT IT IS NOT A LAND SURVEY PLAT OR AN IMPROVEMENT SURVEY PLAT, AND THAT IT IS NOT TO BE RELIED UPON FOR ESTABLISHMENT OF FENCE, BUILDING, OR OTHER FUTURE IMPROVEMENT LINES.

NOTES:

- 1) BASIS OF BEARINGS FOR THIS MAP ARE BASED UPON GPS OBSERVATIONS MADE ON 01/18/2008 BETWEEN MONUMENTS LOCATED AT THE SOUTHEAST SECTION CORNER AND THE NORTHEAST SECTION CORNER OF SAID SECTION AND WITH ALL BEARINGS SHOWN HEREON RELATIVE THERETO.
- 2) ELEVATIONS ARE BASED UPON NGS OPUS SOLUTION NAVD 88 DATUM.
- 3) THE NEAREST EXISTING WELL IS: STROH H12-04, 798' NORTHEAST.
- 4) SEE VISIBLE IMPROVEMENTS EXHIBIT FOR ALL IMPROVEMENTS WITHIN 600'.
- 5) THE LOCATION FALLS IN PASTURE LAND.

LATITUDE & LONGITUDE (NAD 83 SURFACE HOLE):

LATITUDE: N 40.24368
LONGITUDE: W 104.61997
PDOP: 1.8
QUARTER-QUARTER: NW/4NW/4
NEAREST PROPERTY LINE: 197' TO THE WEST

LEGEND

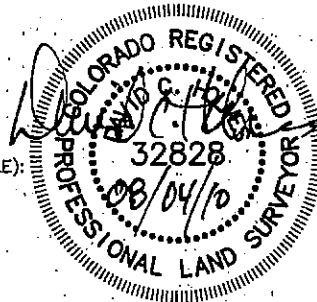
- (A) FOUND SURVEY MONUMENT PER MONUMENT RECORD - EXCEPTIONS NOTED.
- (C) CALCULATED DIMENSION

NOTICE: According to Colorado law you MUST commence any legal action based upon any defect in this W.L.C. within three years after you first discover such defect. In no event may any action based upon any defect in this W.L.C. be commenced more than ten years from this said date of the certification shown hereon.

David C. Holmes
Professional Land Surveyor Registration No. 32828
State of Colorado

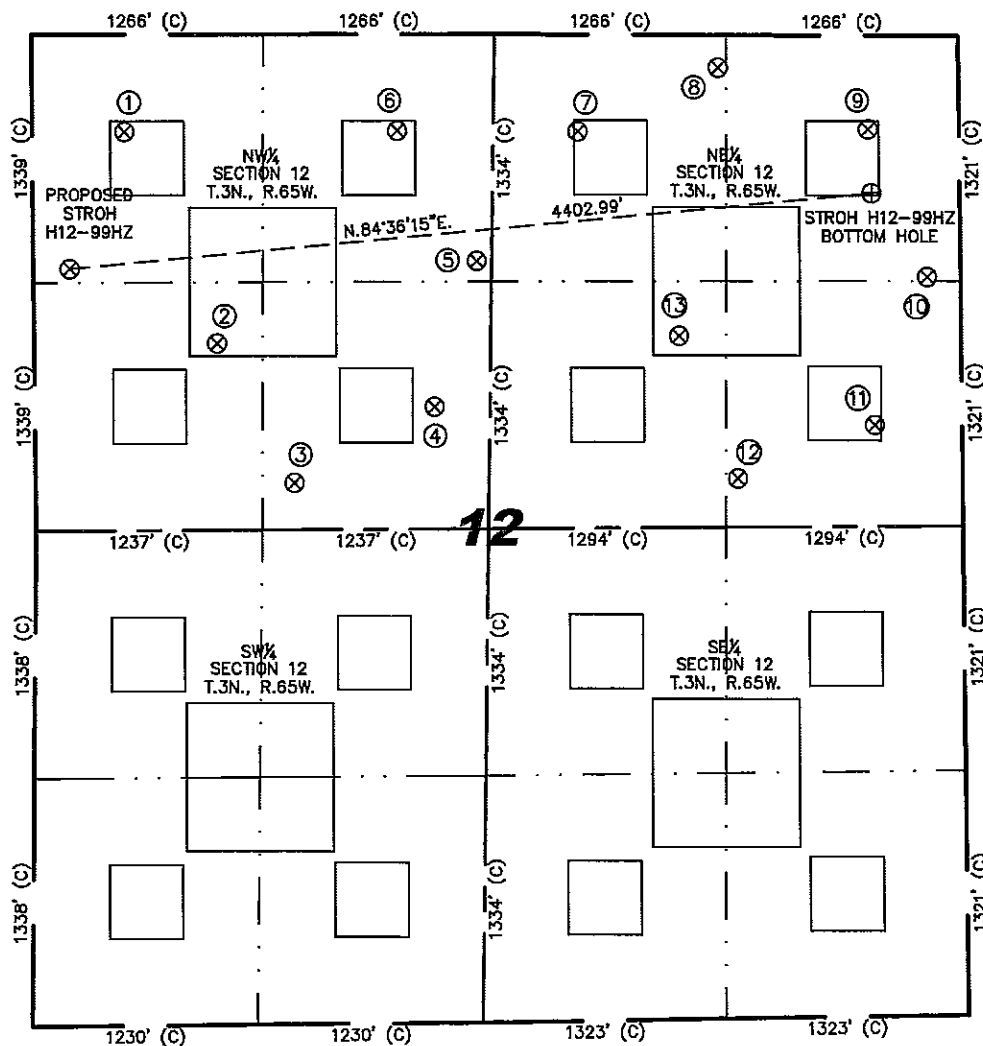
JOB # 10086

Completed 08/02/2010



SITE SKETCH - STROH H12-99HZ

SECTION 12
TOWNSHIP 3 NORTH
RANGE 65 WEST



① STROH H12-04 NW/NW SEC. 12 524' FNL 502' FWL EL 4834' N 40.24568 W 104.61887 PDOP 1.8	② STROH H12-05 SW/NW SEC. 12 1665' FNL 1000' FWL EL 4846' N 40.24254 W 104.61710 PDOP 2.2	③ STROH H12-20 SE/NW SEC. 12 2419' FNL 1415' FWL EL 4860' N 40.24046 W 104.61562 PDOP 1.7	④ STROH H12-06 SE/NW SEC. 12 2009' FNL 2184' FWL EL 4857' N 40.24157 W 104.61286 PDOP 2.2	⑤ STROH H12-18 NE/NW SEC. 12 1223' FNL 2423' FWL EL 4854' N 40.24373 W 104.61199 PDOP 2.0	⑥ STROH H12-03 NE/NW SEC. 12 520' FNL 1993' FWL EL 4853' N 40.24566 W 104.61353 PDOP 2.2	⑦ STROH H12-02 NW/NE SEC. 12 523' FNL 2083' FEL EL 4864' N 40.24563 W 104.60999 PDOP 2.1
⑧ STROH H12-27 NW/NE SEC. 12 175' FNL 1313' FEL EL 4878' N 40.24656 W 104.60723 PDOP 2.1	⑨ STROH H12-1 NE/NE SEC. 12 508' FNL 496' FEL EL 4856' N 40.24562 W 104.60430 PDOP 2.0	⑩ STROH D07-31 NE/NE SEC. 12 1299' FNL 181' FEL EL 4850' N 40.24343 W 104.60319 PDOP 2.0	⑪ STROH H12-08 SE/NE SEC. 12 2099' FNL 475' FEL EL 4846' N 40.24125 W 104.60425 PDOP 2.0	⑫ STROH H12-22 SE/NE SEC. 12 2389' FNL 1227' FEL EL 4854' N 40.24048 W 104.60895 PDOP 2.0	⑬ STROH H12-07 SW/NE SEC. 12 1623' FNL 1540' FEL EL 4863' N 40.24259 W 104.60806 PDOP 1.8	

NOTES:

- THIS SKETCH DOES NOT REPRESENT A BOUNDARY SURVEY.
- THE DATUM FOR THE LATITUDES AND LONGITUDES ON THIS SKETCH IS NAD83.

