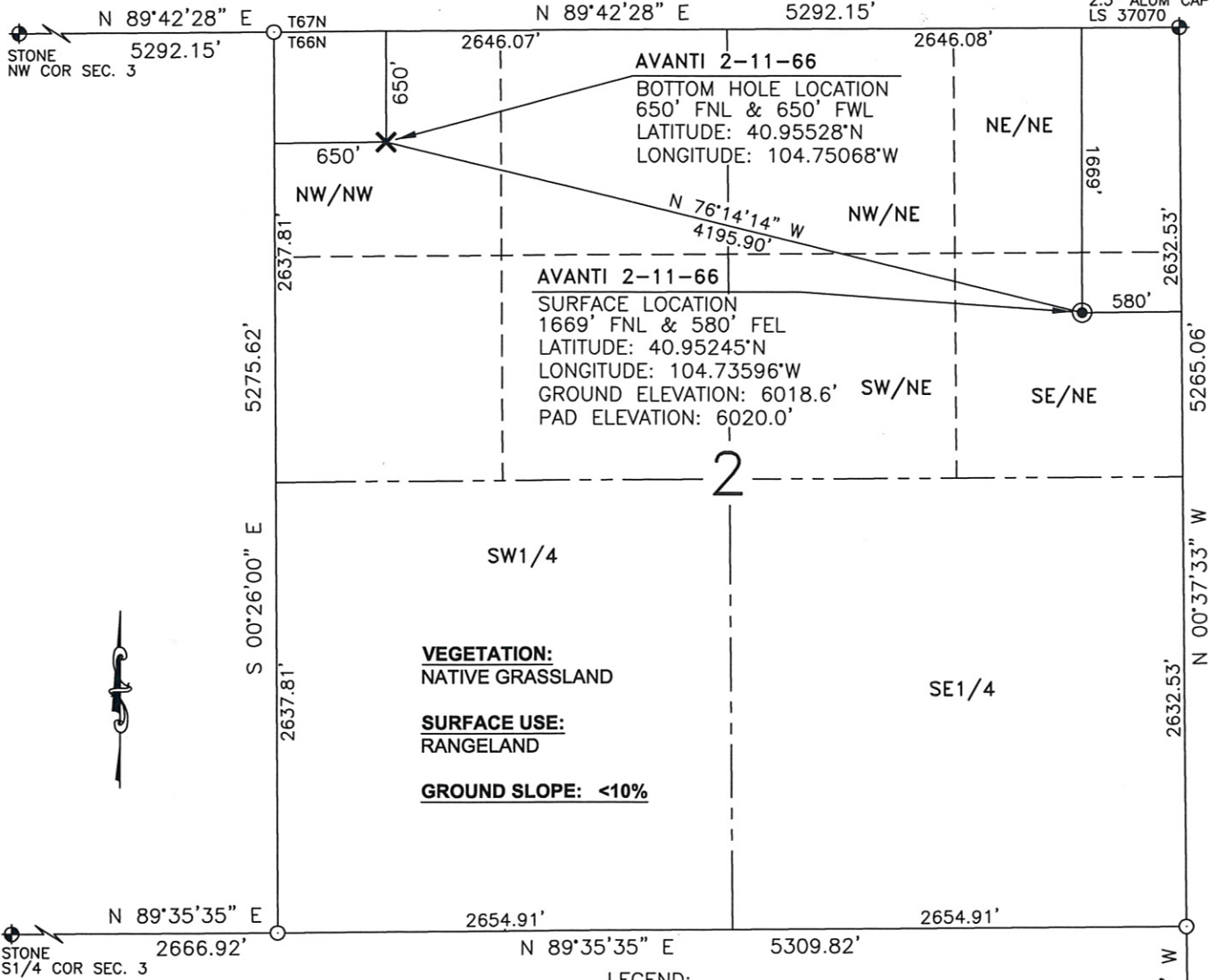


WELL LOCATION MAP

AVANTI 2-11-66

2.5" ALUM CAP
LS 37070



I, JASON D. LEVANEN, A DULY REGISTERED LAND SURVEYOR IN THE STATE OF COLORADO, DO HEREBY CERTIFY THAT THIS PLAT WAS PREPARED FROM NOTES TAKEN DURING A SURVEY PERFORMED BY ME OR UNDER MY SUPERVISION ON JULY 9, 2010.

NOTES:

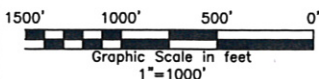
- 1) Horizontal and vertical coordinates based from NGS CORS station "COFC", with an elevation of 5285.90'.
- 2) Basis of bearings are Colorado State Plane north zone. Distances are ground NAD 83, NAVD 88. PAF:1.000251
- 3) All section line dimensions shown hereon are based on field measurements of existing monuments and/or physical evidence found in the field unless otherwise indicated. refer to land survey plats deposited in Weld County
- 4) Physical features shown hereon are for graphical representation only.
- 5) See form 2A for visible improvements within 400' of the wellhead
- 6) Distances to nearest section lines are measured perpendicularly.
- 7) This is not a land survey nor land survey plat.
- 8) Date of survey 7/9/10; Date of Drawing 6/24/10. REV 1 Well Move PDOP Reading 1.6 Instrument Operator Clayton Rosenlund



WESTERN LAND SERVICES

Sheridan, WY 82801 (307)673-1817 Date: 6-24-10

DP: L:\Slawson\Well Plats\Well_Plats.dwg Rev: 7-16-10



SLAWSON EXPLORATION COMPANY, INC.
AVANTI 2-11-66

SL: SE1/4NE1/4, S.2, T11N-R66W
BL: NW1/4NW1/4, S.2, T11N-R66W
6TH P.M., WELD COUNTY, COLORADO