

REFERENCE AREA MAP

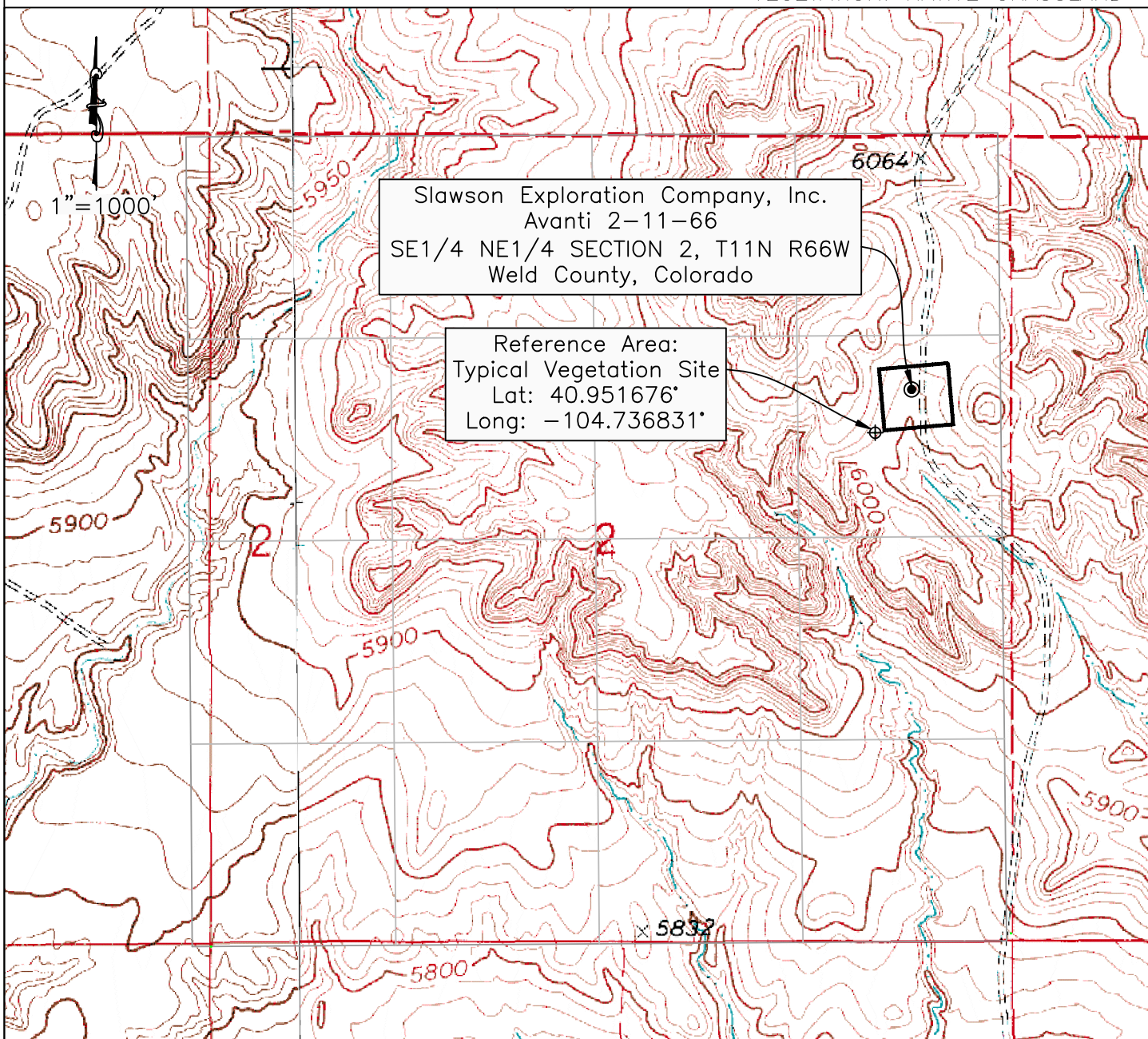
Western Land Surveying of Sheridan, Wyoming, in accordance with a request from Slawson Exploration Company, Inc., has determined the location of Avanti 2-11-66 to be 1669 feet FNL, and 580 feet FEL, (90° off Section Lines) of Section 2, Township 11 North, Range 66 West, of the 6th Principal Meridian, Weld County, Colorado.

Date: Staked on 7/09/2010, drawn on 7/19/2010

Staked by: Clayton Rosenlund

Drawn by: Heather Hairston

SURFACE USE: RANGELAND
VEGETATION: NATIVE GRASSLAND



Slawson Exploration Company, Inc.
Avanti 2-11-66
SE1/4 NE1/4 SECTION 2, T11N R66W
Weld County, Colorado

Reference Area:
Typical Vegetation Site
Lat: 40.951676°
Long: -104.736831°



WESTERN LAND SERVICES
Sheridan, WY 82801 (307)673-1817

Slawson Exploration Company, Inc.
Avanti 2-11-66
SL: SE1/4 NE1/4 SECTION 2, T11N R66W
BL: NW1/4 NW1/4 SECTION 2, T11N R66W
6TH PM, WELD COUNTY, COLORADO