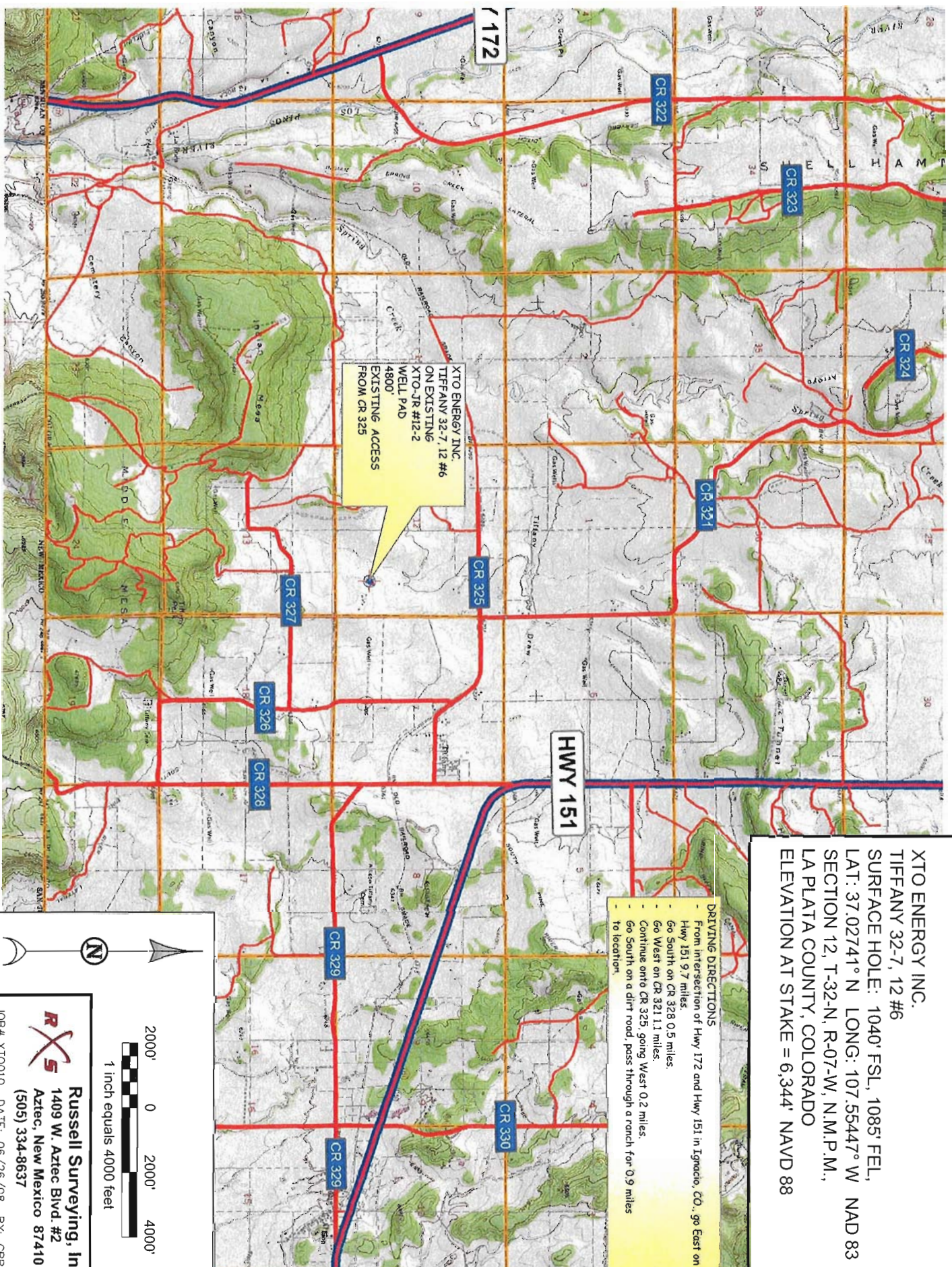


XTO ENERGY INC.
TIFFANY 32-7, 12 #6
SURFACE HOLE: 1040' FSL, 1085' FEL,
LAT: 37.02741° N LONG: 107.55447° W NAD 83
SECTION 12, T-32-N, R-07-W, N.M.P.M.,
LA PLATA COUNTY, COLORADO
ELEVATION AT STAKE = 6,344' NAVD 88

DRIVING DIRECTIONS

- From intersection of Hwy 172 and Hwy 151 in Ignacio, CO., go East on Hwy 151 9.7 miles.
- Go South on CR 328 0.5 miles.
- Go West on CR 321 1.1 miles.
- Continue onto CR 325, going West 0.2 miles.
- Go South on a dirt road, pass through a ranch for 0.9 miles to location.

XTO ENERGY INC.
TIFFANY 32-7, 12 #6
ON EXISTING
XTO-JR #12-2
WELL PAD
4800'
EXISTING ACCESS
FROM CR 325



Russell Surveying, Inc.
1409 W. Aztec Blvd. #2
Aztec, New Mexico 87410
(505) 334-8637

JOB# XT0010 DATE: 06/26/08 BY: GRR