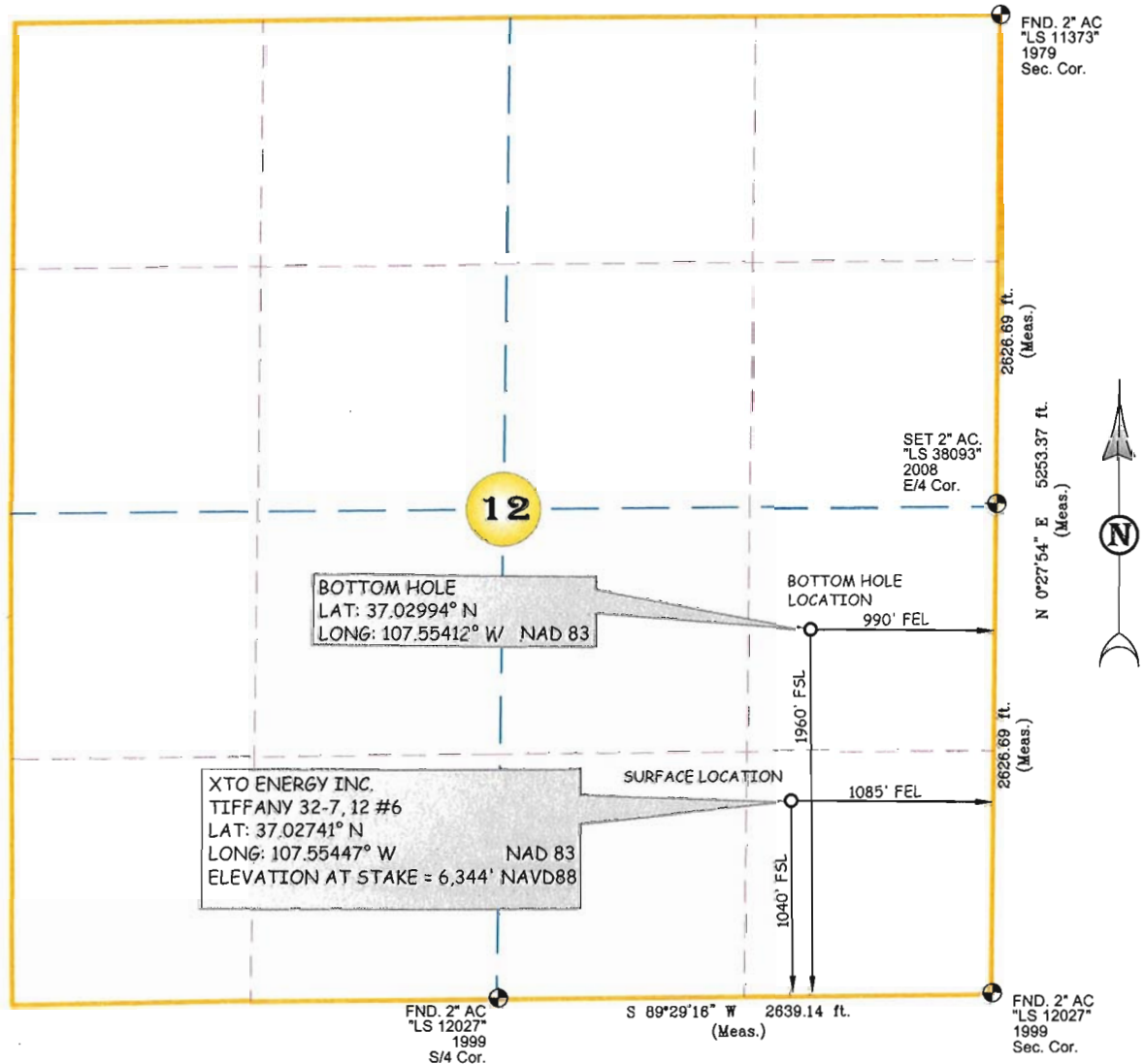


# XTO ENERGY INC.

## TIFFANY 32-7, 12 #6

SURFACE HOLE: 1040' FSL, 1085' FEL,  
 LAT: 37.02741° N LONG: 107.55447° W NAD 83  
 BOTTOM HOLE LOCATION: 1960' FSL, 990' FEL,  
 LAT: 37.02994° N LONG: 107.55412° W NAD 83  
 SECTION 12, T-32-N, R-07-W, N.M.P.M.,  
 LA PLATA COUNTY, COLORADO  
 ELEVATION AT STAKE = 6,344' NAVD 88

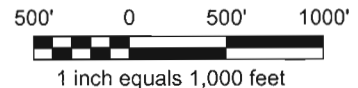
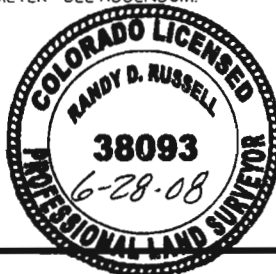


### NOTES:

1. SURFACE USE IS EXISTING WELL LOCATION AND AGRICULTURAL.
2. SEE ATTACHED ADDENDUM FOR IMPROVEMENTS, AND PROPERTY LINES WITHIN 200' OF BORE.
3. THERE ARE NO PUBLIC ROADS OR PROPERTY BOUNDARY LINES WITHIN 150' OF THE ACTUAL WELL BORE LOCATION - SEE ADDENDUM.
4. DATE OF SURVEY 5/15/07
5. BASIS OF ELEVATION = NAVD88 AS PREDICTED BY GEIOD03.
6. GPS POSITIONING COLLECTED BY PDOP VALUE OF 6 OR LESS.
7. LOCATION OFFSETS TO SECTION LINE MEASURED AT 90° TO SECTION LINE.
8. THERE ARE NO DWELLING STRUCTURES WITHIN 400' OF THE PERIMETER OF THE WELL PAD - SEE ADDENDUM.
9. THERE ARE NO PLATTED SUBDIVISION LOT LINES WITHIN 200' OF THE PERIMETER - SEE ADDENDUM.

THIS IS TO CERTIFY THAT THE ABOVE PLAT WAS PREPARED FROM FIELD NOTES OF ACTUAL SURVEYS MADE BY ME OR UNDER MY DIRECT SUPERVISION AND THAT THE SAME ARE TRUE AND CORRECT TO THE BEST OF MY KNOWLEDGE AND BELIEF.

*Randy D. Russell*  
 RANDY D. RUSSELL LICENSE NO. 38093 DATE  
 STATE OF COLORADO



BASIS OF BEARING = BETWEEN MONUMENTS FOUND AT THE SOUTHEAST CORNER AND THE SOUTH QUARTER CORNER OF SECTION 12, T-32-N, R-07-W, N.M.P.M., COLORADO, LINE BEARS S 89°29'16" W BY GPS MEASUREMENT.

**Russell Surveying, Inc.**  
 1409 W. Aztec Blvd. #2  
 Aztec, New Mexico 87410  
 (505) 334-8637  
 JOB# XT0010 DATE: 06/26/08 BY: GRR