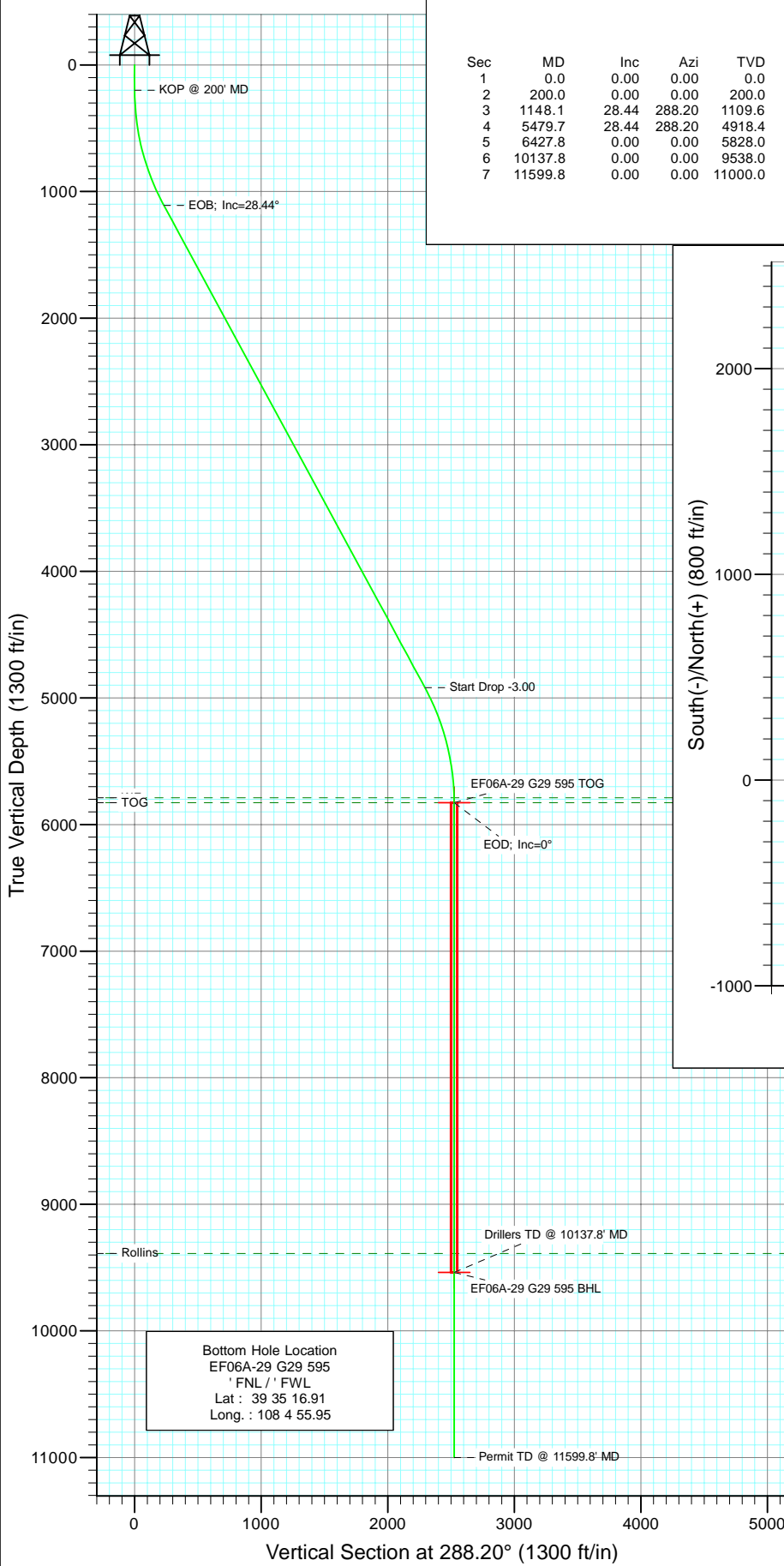
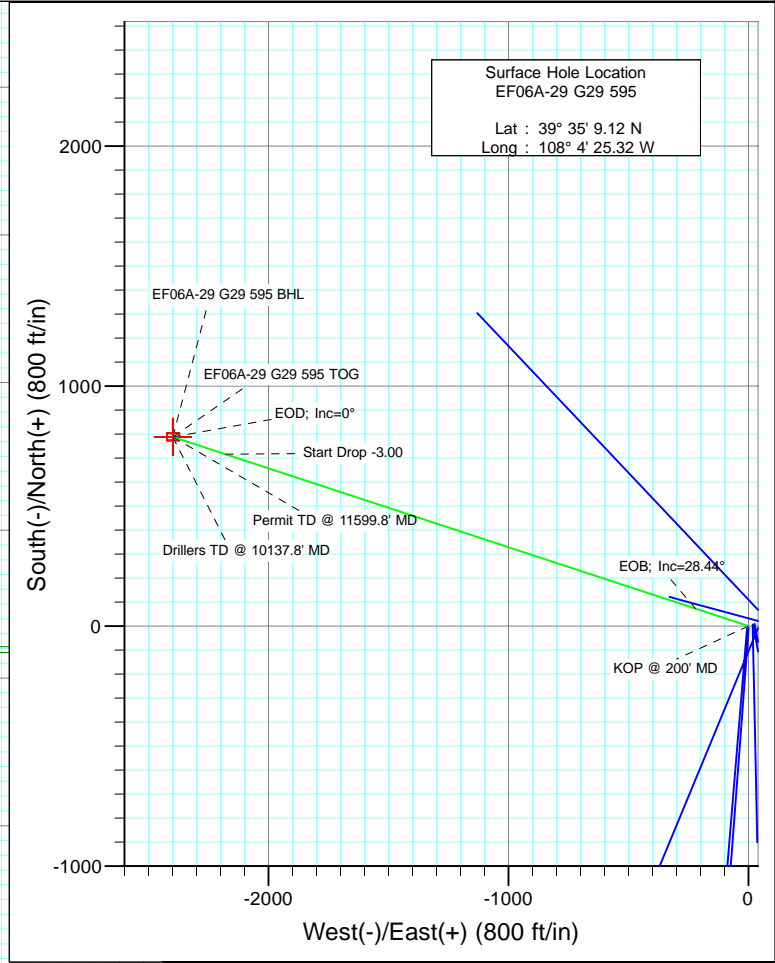




Project: North Piceance  
 Site: G29 595  
 Well: EF06A-29 G29 595  
 Wellbore: DD  
 Design: Plan #1



SECTION DETAILS										
Sec	MD	Inc	Azi	TVD	+N/-S	+E/-W	Dleg	TFace	VSec	Target
1	0.0	0.00	0.00	0.0	0.0	0.0	0.00	0.00	0.0	
2	200.0	0.00	0.00	200.0	0.0	0.0	0.00	0.00	0.0	
3	1148.1	28.44	288.20	1109.6	72.0	-219.0	3.00	288.20	230.5	
4	5479.7	28.44	288.20	4918.4	716.3	-2178.9	0.00	0.00	2293.6	
5	6427.8	0.00	0.00	5828.0	788.3	-2397.9	3.00	180.00	2524.2	EF06A-29 G29 595 TOG
6	10137.8	0.00	0.00	9538.0	788.3	-2397.9	0.00	0.00	2524.2	EF06A-29 G29 595 BHL
7	11599.8	0.00	0.00	11000.0	788.3	-2397.9	0.00	0.00	2524.2	



FORMATION TOP DETAILS		
TVDPath	MDPath	Formation
5788.0	6387.8	WF
5828.0	6427.8	TOG
9388.0	9987.8	Rollins

Azimuths to True North  
Magnetic North: 10.50°

Magnetic Field  
Strength: 52417.7snT  
Dip Angle: 65.84°  
Date: 6/18/2010  
Model: IGRF200510

DESIGN DETAILS: Plan #1					
105XXX: BH					
KBE @ 6118.0ft (Original Well Elev)					
Target	Azimuth	Origin	N/S	E/W	From TVD
EF06A-29 G29 595 BHL	288.20	Slot	0.0	0.0	0.0

# Cathedral Energy Services

## Planning Report

<b>Database:</b> EDM 5000.1 US Multi Users DB	<b>Local Co-ordinate Reference:</b> Well EF06A-29 G29 595
<b>Company:</b> EnCana Oil & Gas (USA) Inc	<b>TVD Reference:</b> KBE @ 6118.0ft (Original Well Elev)
<b>Project:</b> North Piceance	<b>MD Reference:</b> KBE @ 6118.0ft (Original Well Elev)
<b>Site:</b> G29 595	<b>North Reference:</b> True
<b>Well:</b> EF06A-29 G29 595	<b>Survey Calculation Method:</b> Minimum Curvature
<b>Wellbore:</b> DD	
<b>Design:</b> Plan #1	

<b>Project</b> North Piceance		
<b>Map System:</b> US State Plane 1983	<b>System Datum:</b> Mean Sea Level	
<b>Geo Datum:</b> North American Datum 1983		
<b>Map Zone:</b> Colorado Central Zone		

<b>Site</b> G29 595					
<b>Site Position:</b>		<b>Northing:</b>	1,648,557.90 ft	<b>Latitude:</b>	39° 35' 9.12 N
<b>From:</b>	Lat/Long	<b>Easting:</b>	2,274,729.57 ft	<b>Longitude:</b>	108° 4' 25.32 W
<b>Position Uncertainty:</b>	0.0 ft	<b>Slot Radius:</b>	13.200 in	<b>Grid Convergence:</b>	-1.62 °

<b>Well</b> EF06A-29 G29 595					
<b>Well Position</b>	<b>+N/-S</b>	0.0 ft	<b>Northing:</b>	1,648,557.89 ft	<b>Latitude:</b> 39° 35' 9.12 N
	<b>+E/-W</b>	0.0 ft	<b>Easting:</b>	2,274,729.57 ft	<b>Longitude:</b> 108° 4' 25.32 W
<b>Position Uncertainty</b>		0.0 ft	<b>Wellhead Elevation:</b>	ft	<b>Ground Level:</b> 6,003.0 ft

<b>Wellbore</b> DD					
<b>Magnetics</b>	<b>Model Name</b>	<b>Sample Date</b>	<b>Declination</b>	<b>Dip Angle</b>	<b>Field Strength</b>
	IGRF200510	6/18/2010	(°) 10.50	(°) 65.84	(nT) 52,418

<b>Design</b> Plan #1					
<b>Audit Notes:</b>					
<b>Version:</b>	<b>Phase:</b>	PLAN	<b>Tie On Depth:</b>	0.0	
<b>Vertical Section:</b>	<b>Depth From (TVD)</b>	<b>+N/-S</b>	<b>+E/-W</b>	<b>Direction</b>	
	(ft)	(ft)	(ft)	(°)	
	0.0	0.0	0.0	288.20	

<b>Plan Sections</b>										
Measured Depth (ft)	Inclination (°)	Azimuth (°)	Vertical Depth (ft)	+N/-S (ft)	+E/-W (ft)	Dogleg Rate (°/100ft)	Build Rate (°/100ft)	Turn Rate (°/100ft)	TFO (°)	Target
0.0	0.00	0.00	0.0	0.0	0.0	0.00	0.00	0.00	0.00	
200.0	0.00	0.00	200.0	0.0	0.0	0.00	0.00	0.00	0.00	
1,148.1	28.44	288.20	1,109.6	72.0	-219.0	3.00	3.00	0.00	288.20	
5,479.7	28.44	288.20	4,918.4	716.3	-2,178.9	0.00	0.00	0.00	0.00	
6,427.8	0.00	0.00	5,828.0	788.3	-2,397.9	3.00	-3.00	0.00	180.00	EF06A-29 G29 595 T
10,137.8	0.00	0.00	9,538.0	788.3	-2,397.9	0.00	0.00	0.00	0.00	EF06A-29 G29 595 B
11,599.8	0.00	0.00	11,000.0	788.3	-2,397.9	0.00	0.00	0.00	0.00	

# Cathedral Energy Services

## Planning Report

<b>Database:</b>	EDM 5000.1 US Multi Users DB	<b>Local Co-ordinate Reference:</b>	Well EF06A-29 G29 595
<b>Company:</b>	EnCana Oil & Gas (USA) Inc	<b>TVD Reference:</b>	KBE @ 6118.0ft (Original Well Elev)
<b>Project:</b>	North Piceance	<b>MD Reference:</b>	KBE @ 6118.0ft (Original Well Elev)
<b>Site:</b>	G29 595	<b>North Reference:</b>	True
<b>Well:</b>	EF06A-29 G29 595	<b>Survey Calculation Method:</b>	Minimum Curvature
<b>Wellbore:</b>	DD		
<b>Design:</b>	Plan #1		

### Planned Survey

Measured Depth (ft)	Inclination (°)	Azimuth (°)	Vertical Depth (ft)	+N/-S (ft)	+E/-W (ft)	Vertical Section (ft)	Dogleg Rate (°/100ft)	Build Rate (°/100ft)	Comments / Formations
0.0	0.00	0.00	0.0	0.0	0.0	0.0	0.00	0.00	
100.0	0.00	0.00	100.0	0.0	0.0	0.0	0.00	0.00	
200.0	0.00	0.00	200.0	0.0	0.0	0.0	0.00	0.00	KOP @ 200' MD
300.0	3.00	288.20	300.0	0.8	-2.5	2.6	3.00	3.00	
400.0	6.00	288.20	399.6	3.3	-9.9	10.5	3.00	3.00	
500.0	9.00	288.20	498.8	7.3	-22.3	23.5	3.00	3.00	
600.0	12.00	288.20	597.1	13.0	-39.6	41.7	3.00	3.00	
700.0	15.00	288.20	694.3	20.3	-61.8	65.1	3.00	3.00	
800.0	18.00	288.20	790.2	29.2	-88.8	93.5	3.00	3.00	
900.0	21.00	288.20	884.4	39.6	-120.5	126.9	3.00	3.00	
1,000.0	24.00	288.20	976.8	51.6	-156.9	165.1	3.00	3.00	
1,100.0	27.00	288.20	1,067.1	65.0	-197.8	208.2	3.00	3.00	
1,148.1	28.44	288.20	1,109.6	72.0	-219.0	230.5	3.00	3.00	EOB; Inc=28.44°
1,200.0	28.44	288.20	1,155.3	79.7	-242.5	255.3	0.00	0.00	
1,300.0	28.44	288.20	1,243.2	94.6	-287.7	302.9	0.00	0.00	
1,400.0	28.44	288.20	1,331.1	109.5	-333.0	350.5	0.00	0.00	
1,500.0	28.44	288.20	1,419.1	124.3	-378.2	398.1	0.00	0.00	
1,600.0	28.44	288.20	1,507.0	139.2	-423.5	445.8	0.00	0.00	
1,700.0	28.44	288.20	1,594.9	154.1	-468.7	493.4	0.00	0.00	
1,800.0	28.44	288.20	1,682.8	169.0	-514.0	541.0	0.00	0.00	
1,900.0	28.44	288.20	1,770.8	183.8	-559.2	588.7	0.00	0.00	
2,000.0	28.44	288.20	1,858.7	198.7	-604.5	636.3	0.00	0.00	
2,100.0	28.44	288.20	1,946.6	213.6	-649.7	683.9	0.00	0.00	
2,200.0	28.44	288.20	2,034.6	228.5	-695.0	731.5	0.00	0.00	
2,300.0	28.44	288.20	2,122.5	243.3	-740.2	779.2	0.00	0.00	
2,400.0	28.44	288.20	2,210.4	258.2	-785.4	826.8	0.00	0.00	
2,500.0	28.44	288.20	2,298.3	273.1	-830.7	874.4	0.00	0.00	
2,600.0	28.44	288.20	2,386.3	288.0	-875.9	922.1	0.00	0.00	
2,700.0	28.44	288.20	2,474.2	302.8	-921.2	969.7	0.00	0.00	
2,800.0	28.44	288.20	2,562.1	317.7	-966.4	1,017.3	0.00	0.00	
2,900.0	28.44	288.20	2,650.1	332.6	-1,011.7	1,065.0	0.00	0.00	
3,000.0	28.44	288.20	2,738.0	347.5	-1,056.9	1,112.6	0.00	0.00	
3,100.0	28.44	288.20	2,825.9	362.3	-1,102.2	1,160.2	0.00	0.00	
3,200.0	28.44	288.20	2,913.8	377.2	-1,147.4	1,207.8	0.00	0.00	
3,300.0	28.44	288.20	3,001.8	392.1	-1,192.7	1,255.5	0.00	0.00	
3,400.0	28.44	288.20	3,089.7	407.0	-1,237.9	1,303.1	0.00	0.00	
3,500.0	28.44	288.20	3,177.6	421.8	-1,283.2	1,350.7	0.00	0.00	
3,600.0	28.44	288.20	3,265.6	436.7	-1,328.4	1,398.4	0.00	0.00	
3,700.0	28.44	288.20	3,353.5	451.6	-1,373.7	1,446.0	0.00	0.00	
3,800.0	28.44	288.20	3,441.4	466.5	-1,418.9	1,493.6	0.00	0.00	
3,900.0	28.44	288.20	3,529.3	481.3	-1,464.2	1,541.2	0.00	0.00	
4,000.0	28.44	288.20	3,617.3	496.2	-1,509.4	1,588.9	0.00	0.00	
4,100.0	28.44	288.20	3,705.2	511.1	-1,554.6	1,636.5	0.00	0.00	
4,200.0	28.44	288.20	3,793.1	526.0	-1,599.9	1,684.1	0.00	0.00	
4,300.0	28.44	288.20	3,881.1	540.8	-1,645.1	1,731.8	0.00	0.00	
4,400.0	28.44	288.20	3,969.0	555.7	-1,690.4	1,779.4	0.00	0.00	
4,500.0	28.44	288.20	4,056.9	570.6	-1,735.6	1,827.0	0.00	0.00	
4,600.0	28.44	288.20	4,144.8	585.5	-1,780.9	1,874.6	0.00	0.00	
4,700.0	28.44	288.20	4,232.8	600.3	-1,826.1	1,922.3	0.00	0.00	
4,800.0	28.44	288.20	4,320.7	615.2	-1,871.4	1,969.9	0.00	0.00	
4,900.0	28.44	288.20	4,408.6	630.1	-1,916.6	2,017.5	0.00	0.00	
5,000.0	28.44	288.20	4,496.6	645.0	-1,961.9	2,065.2	0.00	0.00	

# Cathedral Energy Services

## Planning Report

<b>Database:</b>	EDM 5000.1 US Multi Users DB	<b>Local Co-ordinate Reference:</b>	Well EF06A-29 G29 595
<b>Company:</b>	EnCana Oil & Gas (USA) Inc	<b>TVD Reference:</b>	KBE @ 6118.0ft (Original Well Elev)
<b>Project:</b>	North Piceance	<b>MD Reference:</b>	KBE @ 6118.0ft (Original Well Elev)
<b>Site:</b>	G29 595	<b>North Reference:</b>	True
<b>Well:</b>	EF06A-29 G29 595	<b>Survey Calculation Method:</b>	Minimum Curvature
<b>Wellbore:</b>	DD		
<b>Design:</b>	Plan #1		

Planned Survey									
Measured Depth (ft)	Inclination (°)	Azimuth (°)	Vertical Depth (ft)	+N/-S (ft)	+E/-W (ft)	Vertical Section (ft)	Dogleg Rate (°/100ft)	Build Rate (°/100ft)	Comments / Formations
5,100.0	28.44	288.20	4,584.5	659.8	-2,007.1	2,112.8	0.00	0.00	
5,200.0	28.44	288.20	4,672.4	674.7	-2,052.4	2,160.4	0.00	0.00	
5,300.0	28.44	288.20	4,760.4	689.6	-2,097.6	2,208.0	0.00	0.00	
5,400.0	28.44	288.20	4,848.3	704.5	-2,142.9	2,255.7	0.00	0.00	
5,479.7	28.44	288.20	4,918.4	716.3	-2,178.9	2,293.6	0.00	0.00	Start Drop -3.00
5,500.0	27.83	288.20	4,936.3	719.3	-2,188.0	2,303.2	3.00	-3.00	
5,600.0	24.83	288.20	5,025.9	733.2	-2,230.1	2,347.6	3.00	-3.00	
5,700.0	21.83	288.20	5,117.7	745.5	-2,267.8	2,387.2	3.00	-3.00	
5,800.0	18.83	288.20	5,211.4	756.4	-2,300.8	2,421.9	3.00	-3.00	
5,900.0	15.83	288.20	5,306.9	765.7	-2,329.1	2,451.7	3.00	-3.00	
6,000.0	12.83	288.20	5,403.8	773.4	-2,352.6	2,476.5	3.00	-3.00	
6,100.0	9.83	288.20	5,501.8	779.6	-2,371.3	2,496.1	3.00	-3.00	
6,200.0	6.83	288.20	5,600.7	784.1	-2,385.0	2,510.6	3.00	-3.00	
6,300.0	3.83	288.20	5,700.3	787.0	-2,393.9	2,519.9	3.00	-3.00	
6,387.8	1.20	288.20	5,788.0	788.2	-2,397.5	2,523.8	3.00	-3.00	WF
6,400.0	0.83	288.20	5,800.2	788.3	-2,397.7	2,524.0	3.00	-3.00	
6,427.8	0.00	0.00	5,828.0	788.3	-2,397.9	2,524.2	3.00	-3.00	EOD; Inc=0° - TOG - EF06A-29 G29 595 TOG
6,500.0	0.00	0.00	5,900.2	788.3	-2,397.9	2,524.2	0.00	0.00	
6,600.0	0.00	0.00	6,000.2	788.3	-2,397.9	2,524.2	0.00	0.00	
6,700.0	0.00	0.00	6,100.2	788.3	-2,397.9	2,524.2	0.00	0.00	
6,800.0	0.00	0.00	6,200.2	788.3	-2,397.9	2,524.2	0.00	0.00	
6,900.0	0.00	0.00	6,300.2	788.3	-2,397.9	2,524.2	0.00	0.00	
7,000.0	0.00	0.00	6,400.2	788.3	-2,397.9	2,524.2	0.00	0.00	
7,100.0	0.00	0.00	6,500.2	788.3	-2,397.9	2,524.2	0.00	0.00	
7,200.0	0.00	0.00	6,600.2	788.3	-2,397.9	2,524.2	0.00	0.00	
7,300.0	0.00	0.00	6,700.2	788.3	-2,397.9	2,524.2	0.00	0.00	
7,400.0	0.00	0.00	6,800.2	788.3	-2,397.9	2,524.2	0.00	0.00	
7,500.0	0.00	0.00	6,900.2	788.3	-2,397.9	2,524.2	0.00	0.00	
7,600.0	0.00	0.00	7,000.2	788.3	-2,397.9	2,524.2	0.00	0.00	
7,700.0	0.00	0.00	7,100.2	788.3	-2,397.9	2,524.2	0.00	0.00	
7,800.0	0.00	0.00	7,200.2	788.3	-2,397.9	2,524.2	0.00	0.00	
7,900.0	0.00	0.00	7,300.2	788.3	-2,397.9	2,524.2	0.00	0.00	
8,000.0	0.00	0.00	7,400.2	788.3	-2,397.9	2,524.2	0.00	0.00	
8,100.0	0.00	0.00	7,500.2	788.3	-2,397.9	2,524.2	0.00	0.00	
8,200.0	0.00	0.00	7,600.2	788.3	-2,397.9	2,524.2	0.00	0.00	
8,300.0	0.00	0.00	7,700.2	788.3	-2,397.9	2,524.2	0.00	0.00	
8,400.0	0.00	0.00	7,800.2	788.3	-2,397.9	2,524.2	0.00	0.00	
8,500.0	0.00	0.00	7,900.2	788.3	-2,397.9	2,524.2	0.00	0.00	
8,600.0	0.00	0.00	8,000.2	788.3	-2,397.9	2,524.2	0.00	0.00	
8,700.0	0.00	0.00	8,100.2	788.3	-2,397.9	2,524.2	0.00	0.00	
8,800.0	0.00	0.00	8,200.2	788.3	-2,397.9	2,524.2	0.00	0.00	
8,900.0	0.00	0.00	8,300.2	788.3	-2,397.9	2,524.2	0.00	0.00	
9,000.0	0.00	0.00	8,400.2	788.3	-2,397.9	2,524.2	0.00	0.00	
9,100.0	0.00	0.00	8,500.2	788.3	-2,397.9	2,524.2	0.00	0.00	
9,200.0	0.00	0.00	8,600.2	788.3	-2,397.9	2,524.2	0.00	0.00	
9,300.0	0.00	0.00	8,700.2	788.3	-2,397.9	2,524.2	0.00	0.00	
9,400.0	0.00	0.00	8,800.2	788.3	-2,397.9	2,524.2	0.00	0.00	
9,500.0	0.00	0.00	8,900.2	788.3	-2,397.9	2,524.2	0.00	0.00	
9,600.0	0.00	0.00	9,000.2	788.3	-2,397.9	2,524.2	0.00	0.00	
9,700.0	0.00	0.00	9,100.2	788.3	-2,397.9	2,524.2	0.00	0.00	
9,800.0	0.00	0.00	9,200.2	788.3	-2,397.9	2,524.2	0.00	0.00	
9,900.0	0.00	0.00	9,300.2	788.3	-2,397.9	2,524.2	0.00	0.00	

# Cathedral Energy Services

## Planning Report

<b>Database:</b> EDM 5000.1 US Multi Users DB	<b>Local Co-ordinate Reference:</b> Well EF06A-29 G29 595
<b>Company:</b> EnCana Oil & Gas (USA) Inc	<b>TVD Reference:</b> KBE @ 6118.0ft (Original Well Elev)
<b>Project:</b> North Piceance	<b>MD Reference:</b> KBE @ 6118.0ft (Original Well Elev)
<b>Site:</b> G29 595	<b>North Reference:</b> True
<b>Well:</b> EF06A-29 G29 595	<b>Survey Calculation Method:</b> Minimum Curvature
<b>Wellbore:</b> DD	
<b>Design:</b> Plan #1	

Planned Survey									
Measured Depth (ft)	Inclination (°)	Azimuth (°)	Vertical Depth (ft)	+N/-S (ft)	+E/-W (ft)	Vertical Section (ft)	Dogleg Rate (°/100ft)	Build Rate (°/100ft)	Comments / Formations
9,987.8	0.00	0.00	9,388.0	788.3	-2,397.9	2,524.2	0.00	0.00	Rollins
10,000.0	0.00	0.00	9,400.2	788.3	-2,397.9	2,524.2	0.00	0.00	
10,100.0	0.00	0.00	9,500.2	788.3	-2,397.9	2,524.2	0.00	0.00	
10,137.8	0.00	0.00	9,538.0	788.3	-2,397.9	2,524.2	0.00	0.00	Drillers TD @ 10137.8' MD - EF06A-29 G29 595
10,200.0	0.00	0.00	9,600.2	788.3	-2,397.9	2,524.2	0.00	0.00	
10,300.0	0.00	0.00	9,700.2	788.3	-2,397.9	2,524.2	0.00	0.00	
10,400.0	0.00	0.00	9,800.2	788.3	-2,397.9	2,524.2	0.00	0.00	
10,500.0	0.00	0.00	9,900.2	788.3	-2,397.9	2,524.2	0.00	0.00	
10,600.0	0.00	0.00	10,000.2	788.3	-2,397.9	2,524.2	0.00	0.00	
10,700.0	0.00	0.00	10,100.2	788.3	-2,397.9	2,524.2	0.00	0.00	
10,800.0	0.00	0.00	10,200.2	788.3	-2,397.9	2,524.2	0.00	0.00	
10,900.0	0.00	0.00	10,300.2	788.3	-2,397.9	2,524.2	0.00	0.00	
11,000.0	0.00	0.00	10,400.2	788.3	-2,397.9	2,524.2	0.00	0.00	
11,100.0	0.00	0.00	10,500.2	788.3	-2,397.9	2,524.2	0.00	0.00	
11,200.0	0.00	0.00	10,600.2	788.3	-2,397.9	2,524.2	0.00	0.00	
11,300.0	0.00	0.00	10,700.2	788.3	-2,397.9	2,524.2	0.00	0.00	
11,400.0	0.00	0.00	10,800.2	788.3	-2,397.9	2,524.2	0.00	0.00	
11,500.0	0.00	0.00	10,900.2	788.3	-2,397.9	2,524.2	0.00	0.00	
11,599.8	0.00	0.00	11,000.0	788.3	-2,397.9	2,524.2	0.00	0.00	Permit TD @ 11599.8' MD

Targets									
Target Name - hit/miss target - Shape	Dip Angle (°)	Dip Dir. (°)	TVD (ft)	+N/-S (ft)	+E/-W (ft)	Northing (ft)	Easting (ft)	Latitude	Longitude
EF06A-29 G29 595 BHL - plan hits target center - Rectangle (sides W30.0 H50.0 D0.0)	0.00	0.00	9,538.0	788.3	-2,397.9	1,649,413.81	2,272,354.94	39° 35' 16.91 N	108° 4' 55.95 W
EF06A-29 G29 595 TOC - plan hits target center - Point	0.00	0.00	5,828.0	788.3	-2,397.9	1,649,413.81	2,272,354.94	39° 35' 16.91 N	108° 4' 55.95 W

Formations					
Measured Depth (ft)	Vertical Depth (ft)	Name	Lithology	Dip (°)	Dip Direction (°)
6,387.8	5,788.0	WF		0.00	
6,427.8	5,828.0	TOG		0.00	
9,987.8	9,388.0	Rollins		0.00	

# Cathedral Energy Services

## Planning Report

<b>Database:</b> EDM 5000.1 US Multi Users DB <b>Company:</b> EnCana Oil & Gas (USA) Inc <b>Project:</b> North Piceance <b>Site:</b> G29 595 <b>Well:</b> EF06A-29 G29 595 <b>Wellbore:</b> DD <b>Design:</b> Plan #1	<b>Local Co-ordinate Reference:</b> Well EF06A-29 G29 595 <b>TVD Reference:</b> KBE @ 6118.0ft (Original Well Elev) <b>MD Reference:</b> KBE @ 6118.0ft (Original Well Elev) <b>North Reference:</b> True <b>Survey Calculation Method:</b> Minimum Curvature	
---	---	--

Plan Annotations				
Measured Depth (ft)	Vertical Depth (ft)	Local Coordinates		Comment
		+N/-S (ft)	+E/-W (ft)	
200.0	200.0	0.0	0.0	KOP @ 200' MD
1,148.1	1,109.6	72.0	-219.0	EOB; Inc=28.44°
5,479.7	4,918.4	716.3	-2,178.9	Start Drop -3.00
6,427.8	5,828.0	788.3	-2,397.9	EOD; Inc=0°
10,137.8	9,538.0	788.3	-2,397.9	Drillers TD @ 10137.8' MD
11,599.8	11,000.0	788.3	-2,397.9	Permit TD @ 11599.8' MD