

T5S, R95W, 6th P.M.

W.C. 1916 Brass  
Cap 2.3' High, Post  
Lat: 39.594056  
Long: 108.068661

S89°58'46"W - 5286.68' (Meas.)

1916 Brass Cap  
1.0' High, Pile of  
Stones, Steel Post  
Lat: 39.592061  
Long: 108.087411

True Position

2240'

N. PARACHUTE  
EF04B-33 G29 595  
Elev. Graded Ground = 6097'

W.C. 1916 Brass  
Cap 1.2' High  
Lat: 39.586772  
Long: 108.068647

1351'

True Position

29

NOTE:  
THE PROPOSED BOTTOM HOLE FOR THIS WELL  
IS LOCATED IN THE NW 1/4 NW 1/4 OF SECTION  
33, T5S, R95W, 6th P.M. AT A DISTANCE OF  
500' FNL 66.3' FWL. IT BEARS S29°41'22"E  
4076.98' FROM THE PROPOSED WELL HEAD.

LINE TABLE		
LINE	BEARING	LENGTH
L1	N00°06'15"W	726.00'
L2	N00°05'49"W	712.80'
L3	N00°07'15"W	627.00'

NOTE:  
SEE ADDENDUM PLAT FOR EXISTING  
IMPROVEMENT WITHIN 400' OF THE  
PROPOSED WELL DISTURBANCE.

1916 Brass Cap  
2.0' High  
Lat: 39.577565  
Long: 108.678001

1916 Brass Cap  
1.0' High  
Lat: 39.577567  
Long: 108.068633

True Position

S89°45'35"W - 2643.30' (Meas.)

S89°57'32"W - 2641.41' (Meas.)

W.C. 1916 Brass  
Cap 1.5' High  
Lat: 39.575816  
Long: 108.087371

LEGEND:

- └─┘ = 90° SYMBOL
- = PROPOSED WELL HEAD.
- ▲ = SECTION CORNERS LOCATED.

PDOP = 5.2

NAD 83 (SURFACE LOCATION)	
LATITUDE	= 39°35'09.29" (39.585914)
LONGITUDE	= 108°04'24.37" (108.073436)
NAD 27 (SURFACE LOCATION)	
LATITUDE	= 39°35'09.38" (39.585939)
LONGITUDE	= 108°04'22.10" (108.072806)

EnCana OIL & GAS (USA) INC.

Well location, N. PARACHUTE EF04B-33 G29 595 (SURFACE LOCATION), located as shown in the SW 1/4 NE 1/4 of Section 29, T5S, R95W, 6th P.M., Garfield County, Colorado.

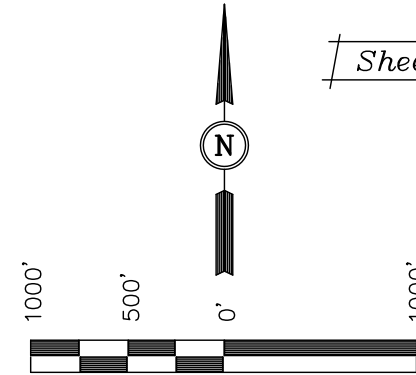
BASIS OF ELEVATION

SPOT ELEVATION AT THE NORTHWEST CORNER OF SECTION 30, T5S, R95W, 6th P.M. TAKEN FROM THE FORKED GULCH QUADRANGLE, COLORADO, GARFIELD COUNTY, 7.5 MINUTE SERIES (TOPOGRAPHICAL MAP) PUBLISHED BY THE UNITED STATES DEPARTMENT OF THE INTERIOR, GEOLOGICAL SURVEY. SAID ELEVATION IS MARKED AS BEING 5966 FEET.

BASIS OF BEARINGS

BASIS OF BEARINGS IS A G.P.S. OBSERVATION.

Sheet 1q of 11



SCALE

CERTIFICATE

THIS IS TO CERTIFY THAT THE ABOVE PLAT WAS PREPARED FROM FIELD NOTES OF ACTUAL SURVEYS MADE BY ME OR UNDER MY SUPERVISION AND THAT THE SAME ARE TRUE AND CORRECT TO THE BEST OF MY KNOWLEDGE AND BELIEF.

REGISTERED LAND SURVEYOR  
REGISTRATION NO. 17492  
STATE OF COLORADO

Revised: 06-30-10 D.R.B.  
Revised: 06-10-10 D.R.B.

UINTAH ENGINEERING & LAND SURVEYING  
85 SOUTH 200 EAST - VERNAL, UTAH 84078  
(435) 789-1017

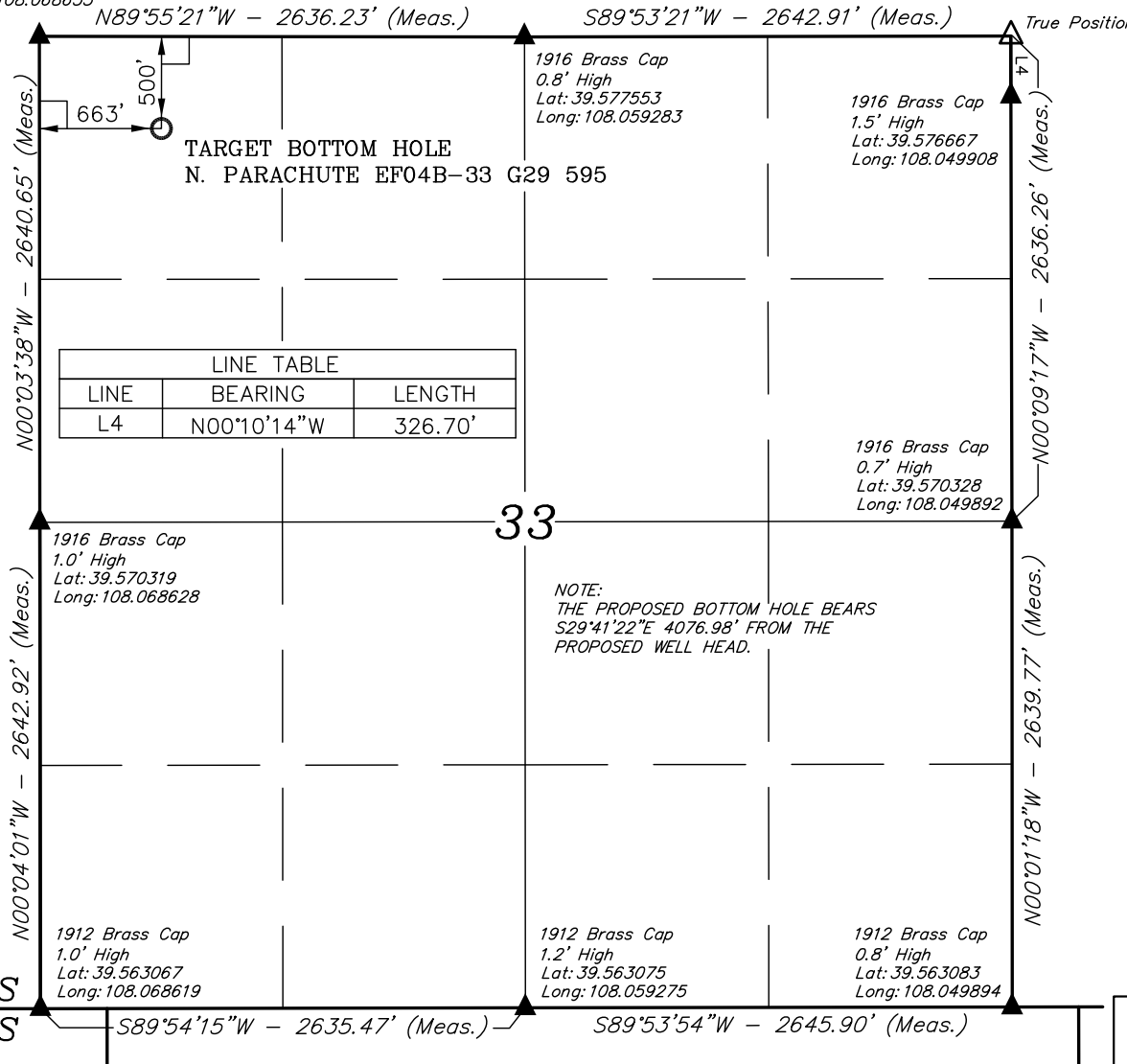
SCALE 1" = 1000'	DATE SURVEYED: 02-13-08	DATE DRAWN: 04-22-08
PARTY G.O. D.S. D.R.B.	REFERENCES G.L.O. PLAT	
WEATHER COLD	FILE EnCana OIL & GAS (USA) INC.	

# EnCana OIL & GAS (USA) INC.

## T5S, R95W, 6th P.M.

Well location, N. PARACHUTE EF04B-33 G29 595 (TARGET BOTTOM HOLE), located as shown in the NW 1/4 NW 1/4 of Section 33, T5S, R95W, 6th P.M., Garfield County, Colorado.

1916 Brass Cap  
1.0' High  
Lat: 39.577567  
Long: 108.068633



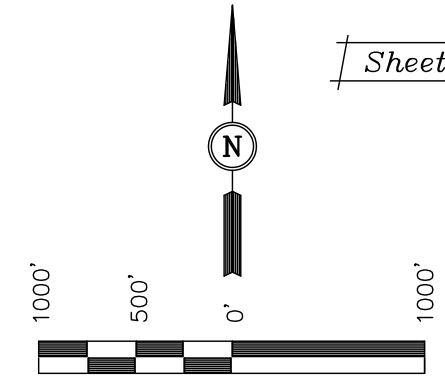
### BASIS OF ELEVATION

SPOT ELEVATION AT THE NORTHWEST CORNER OF SECTION 30, T5S, R95W, 6th P.M. TAKEN FROM THE FORKED GULCH QUADRANGLE, COLORADO, GARFIELD COUNTY, 7.5 MINUTE SERIES (TOPOGRAPHICAL MAP) PUBLISHED BY THE UNITED STATES DEPARTMENT OF THE INTERIOR, GEOLOGICAL SURVEY. SAID ELEVATION IS MARKED AS BEING 5966 FEET.

### BASIS OF BEARINGS

BASIS OF BEARINGS IS A G.P.S. OBSERVATION.

Sheet 1r of 11



SCALE

### CERTIFICATE

THIS IS TO CERTIFY THAT THE ABOVE PLAT WAS PREPARED FROM FIELD NOTES OF ACTUAL SURVEYS MADE BY ME OR UNDER MY SUPERVISION AND THAT THE SAME ARE TRUE AND CORRECT TO THE BEST OF MY KNOWLEDGE AND BELIEF.

*[Signature]*  
17492  
REGISTERED LAND SURVEYOR  
REGISTRATION NO. 17492  
STATE OF COLORADO

Revised: 06-30-10 D.R.B.  
Revised: 06-10-10 D.R.B.

**UINTAH ENGINEERING & LAND SURVEYING**  
85 SOUTH 200 EAST - VERNAL, UTAH 84078  
(435) 789-1017

### LEGEND:

- └─┘ = 90° SYMBOL
- = PROPOSED WELL HEAD.
- ▲ = SECTION CORNERS LOCATED.
- △ = SECTION CORNERS RE-ESTAB. BY SINGLE PROPORTION METHOD.

<b>NAD 83 (TARGET BOTTOM HOLE)</b>	
LATITUDE	= 39°34'34.29" (39.576192)
LONGITUDE	= 108°03'58.61" (108.066281)
<b>NAD 27 (TARGET BOTTOM HOLE)</b>	
LATITUDE	= 39°34'34.37" (39.576214)
LONGITUDE	= 108°03'56.33" (108.065647)

SCALE 1" = 1000'	DATE SURVEYED: 02-13-08	DATE DRAWN: 04-22-08
PARTY G.O. D.S. D.R.B.	REFERENCES G.L.O. PLAT	
WEATHER COLD	FILE EnCana OIL & GAS (USA) INC.	