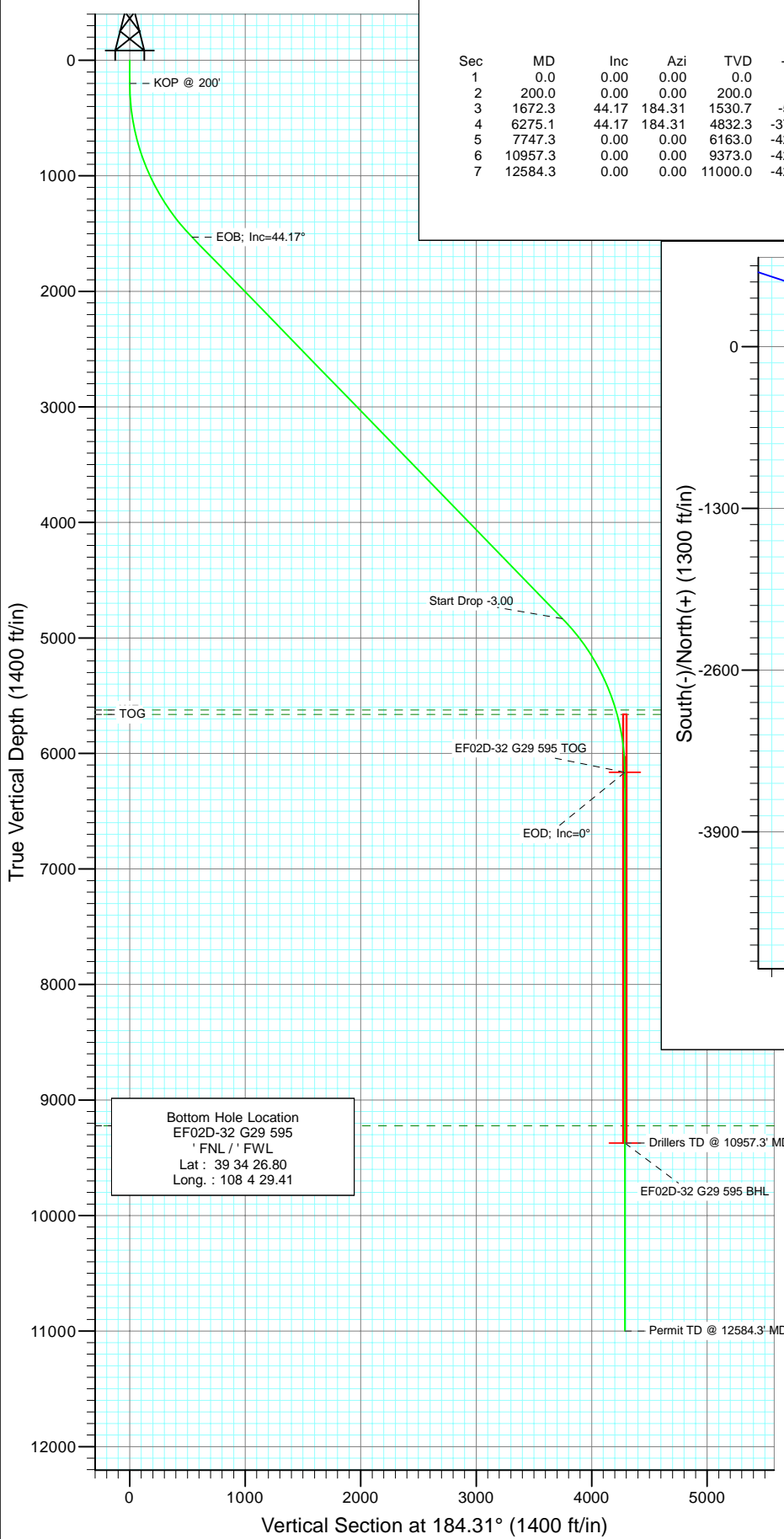
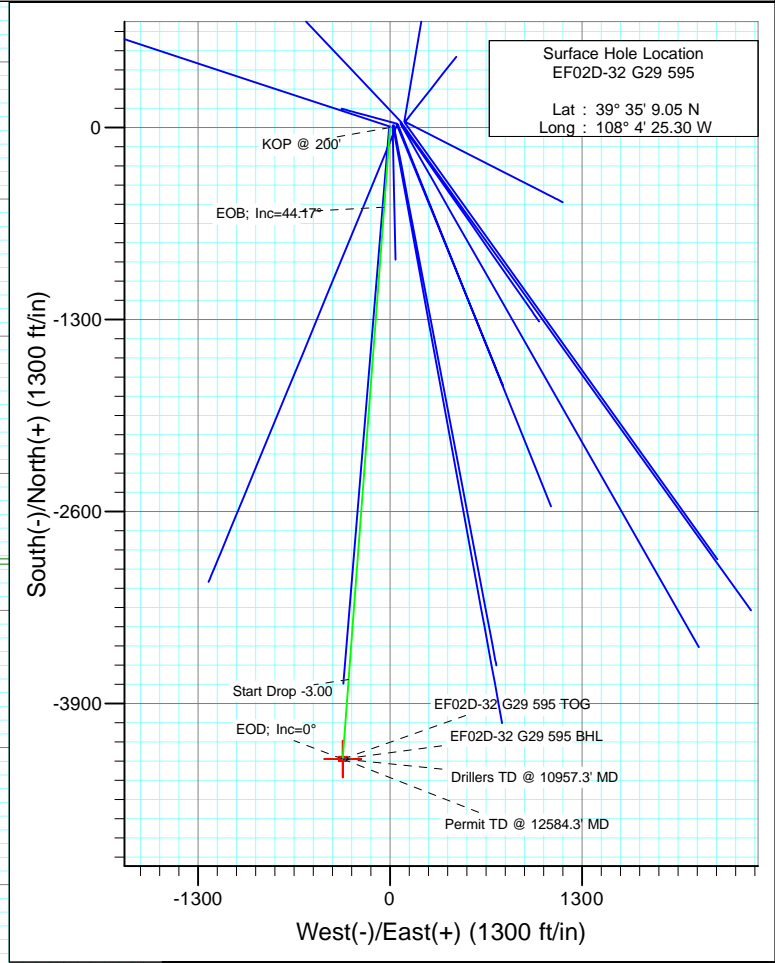




Project: North Piceance
 Site: G29 595
 Well: EF02D-32 G29 595
 Wellbore: DD
 Design: Plan #1



SECTION DETAILS										
Sec	MD	Inc	Azi	TVD	+N/-S	+E/-W	Dleg	TFace	VSect	Target
1	0.0	0.00	0.00	0.0	0.0	0.0	0.00	0.00	0.0	
2	200.0	0.00	0.00	200.0	0.0	0.0	0.00	0.00	0.0	
3	1672.3	44.17	184.31	1530.7	-538.4	-40.5	3.00	184.31	539.9	
4	6275.1	44.17	184.31	4832.3	-3736.4	-281.3	0.00	0.00	3747.0	
5	7747.3	0.00	0.00	6163.0	-4274.9	-321.8	3.00	180.00	4287.0	EF02D-32 G29 595 TOG
6	10957.3	0.00	0.00	9373.0	-4274.9	-321.8	0.00	0.00	4287.0	EF02D-32 G29 595 BHL
7	12584.3	0.00	0.00	11000.0	-4274.9	-321.8	0.00	0.00	4287.0	



FORMATION TOP DETAILS		
TVDPath	MDPath	Formation
5623.0	7199.9	WF
5663.0	7241.5	TOG
9223.0	10807.3	Rollins

Azimuths to True North
Magnetic North: 10.50°

Magnetic Field
Strength: 52417.7snT
Dip Angle: 65.84°
Date: 6/18/2010
Model: IGRF200510

DESIGN DETAILS: Plan #1					
105XXX; BH					
KBE @ 6118.0ft (Original Well Elev)					
Target	Azimuth	Origin	N/S	E/W	From TVD
EF02D-32 G29 595 BHL	184.31	Slot	0.0	0.0	0.0

Cathedral Energy Services

Planning Report

Database: EDM 5000.1 US Multi Users DB	Local Co-ordinate Reference: Well EF02D-32 G29 595
Company: EnCana Oil & Gas (USA) Inc	TVD Reference: KBE @ 6118.0ft (Original Well Elev)
Project: North Piceance	MD Reference: KBE @ 6118.0ft (Original Well Elev)
Site: G29 595	North Reference: True
Well: EF02D-32 G29 595	Survey Calculation Method: Minimum Curvature
Wellbore: DD	
Design: Plan #1	

Project North Piceance		
Map System: US State Plane 1983	System Datum: Mean Sea Level	
Geo Datum: North American Datum 1983		
Map Zone: Colorado Central Zone		

Site G29 595					
Site Position:		Northing:	1,648,557.90 ft	Latitude:	39° 35' 9.12 N
From:	Lat/Long	Easting:	2,274,729.57 ft	Longitude:	108° 4' 25.32 W
Position Uncertainty:	0.0 ft	Slot Radius:	13.200 in	Grid Convergence:	-1.62 °

Well EF02D-32 G29 595						
Well Position	+N/-S	0.0 ft	Northing:	1,648,550.76 ft	Latitude:	39° 35' 9.05 N
	+E/-W	0.0 ft	Easting:	2,274,730.94 ft	Longitude:	108° 4' 25.30 W
Position Uncertainty		0.0 ft	Wellhead Elevation:	ft	Ground Level:	6,003.0 ft

Wellbore DD					
Magnetics	Model Name	Sample Date	Declination	Dip Angle	Field Strength
	IGRF200510	6/18/2010	(°)	(°)	(nT)
			10.50	65.84	52,418

Design Plan #1					
Audit Notes:					
Version:	Phase:	PLAN	Tie On Depth:	0.0	
Vertical Section:	Depth From (TVD)	+N/-S	+E/-W	Direction	
	(ft)	(ft)	(ft)	(°)	
	0.0	0.0	0.0	184.31	

Plan Sections										
Measured Depth (ft)	Inclination (°)	Azimuth (°)	Vertical Depth (ft)	+N/-S (ft)	+E/-W (ft)	Dogleg Rate (°/100ft)	Build Rate (°/100ft)	Turn Rate (°/100ft)	TFO (°)	Target
0.0	0.00	0.00	0.0	0.0	0.0	0.00	0.00	0.00	0.00	
200.0	0.00	0.00	200.0	0.0	0.0	0.00	0.00	0.00	0.00	
1,672.3	44.17	184.31	1,530.7	-538.4	-40.5	3.00	3.00	0.00	184.31	
6,275.1	44.17	184.31	4,832.3	-3,736.4	-281.3	0.00	0.00	0.00	0.00	
7,747.3	0.00	0.00	6,163.0	-4,274.9	-321.8	3.00	-3.00	0.00	180.00	EF02D-32 G29 595 T
10,957.3	0.00	0.00	9,373.0	-4,274.9	-321.8	0.00	0.00	0.00	0.00	EF02D-32 G29 595 B
12,584.3	0.00	0.00	11,000.0	-4,274.9	-321.8	0.00	0.00	0.00	0.00	

Cathedral Energy Services

Planning Report

Database:	EDM 5000.1 US Multi Users DB	Local Co-ordinate Reference:	Well EF02D-32 G29 595
Company:	EnCana Oil & Gas (USA) Inc	TVD Reference:	KBE @ 6118.0ft (Original Well Elev)
Project:	North Piceance	MD Reference:	KBE @ 6118.0ft (Original Well Elev)
Site:	G29 595	North Reference:	True
Well:	EF02D-32 G29 595	Survey Calculation Method:	Minimum Curvature
Wellbore:	DD		
Design:	Plan #1		

Planned Survey

Measured Depth (ft)	Inclination (°)	Azimuth (°)	Vertical Depth (ft)	+N/-S (ft)	+E/-W (ft)	Vertical Section (ft)	Dogleg Rate (°/100ft)	Build Rate (°/100ft)	Comments / Formations
0.0	0.00	0.00	0.0	0.0	0.0	0.0	0.00	0.00	
100.0	0.00	0.00	100.0	0.0	0.0	0.0	0.00	0.00	
200.0	0.00	0.00	200.0	0.0	0.0	0.0	0.00	0.00	KOP @ 200'
300.0	3.00	184.31	300.0	-2.6	-0.2	2.6	3.00	3.00	
400.0	6.00	184.31	399.6	-10.4	-0.8	10.5	3.00	3.00	
500.0	9.00	184.31	498.8	-23.4	-1.8	23.5	3.00	3.00	
600.0	12.00	184.31	597.1	-41.6	-3.1	41.7	3.00	3.00	
700.0	15.00	184.31	694.3	-64.9	-4.9	65.1	3.00	3.00	
800.0	18.00	184.31	790.2	-93.2	-7.0	93.5	3.00	3.00	
900.0	21.00	184.31	884.4	-126.5	-9.5	126.9	3.00	3.00	
1,000.0	24.00	184.31	976.8	-164.7	-12.4	165.1	3.00	3.00	
1,100.0	27.00	184.31	1,067.1	-207.6	-15.6	208.2	3.00	3.00	
1,200.0	30.00	184.31	1,154.9	-255.2	-19.2	255.9	3.00	3.00	
1,300.0	33.00	184.31	1,240.2	-307.2	-23.1	308.1	3.00	3.00	
1,400.0	36.00	184.31	1,322.6	-363.7	-27.4	364.8	3.00	3.00	
1,500.0	39.00	184.31	1,401.9	-424.4	-32.0	425.6	3.00	3.00	
1,600.0	42.00	184.31	1,477.9	-489.2	-36.8	490.6	3.00	3.00	
1,672.3	44.17	184.31	1,530.7	-538.4	-40.5	539.9	3.00	3.00	EOB; Inc=44.17°
1,700.0	44.17	184.31	1,550.6	-557.7	-42.0	559.2	0.00	0.00	
1,800.0	44.17	184.31	1,622.3	-627.1	-47.2	628.9	0.00	0.00	
1,900.0	44.17	184.31	1,694.1	-696.6	-52.4	698.6	0.00	0.00	
2,000.0	44.17	184.31	1,765.8	-766.1	-57.7	768.3	0.00	0.00	
2,100.0	44.17	184.31	1,837.5	-835.6	-62.9	838.0	0.00	0.00	
2,200.0	44.17	184.31	1,909.3	-905.1	-68.1	907.6	0.00	0.00	
2,300.0	44.17	184.31	1,981.0	-974.5	-73.4	977.3	0.00	0.00	
2,400.0	44.17	184.31	2,052.7	-1,044.0	-78.6	1,047.0	0.00	0.00	
2,500.0	44.17	184.31	2,124.4	-1,113.5	-83.8	1,116.7	0.00	0.00	
2,600.0	44.17	184.31	2,196.2	-1,183.0	-89.1	1,186.3	0.00	0.00	
2,700.0	44.17	184.31	2,267.9	-1,252.5	-94.3	1,256.0	0.00	0.00	
2,800.0	44.17	184.31	2,339.6	-1,322.0	-99.5	1,325.7	0.00	0.00	
2,900.0	44.17	184.31	2,411.4	-1,391.4	-104.8	1,395.4	0.00	0.00	
3,000.0	44.17	184.31	2,483.1	-1,460.9	-110.0	1,465.0	0.00	0.00	
3,100.0	44.17	184.31	2,554.8	-1,530.4	-115.2	1,534.7	0.00	0.00	
3,200.0	44.17	184.31	2,626.6	-1,599.9	-120.4	1,604.4	0.00	0.00	
3,300.0	44.17	184.31	2,698.3	-1,669.4	-125.7	1,674.1	0.00	0.00	
3,400.0	44.17	184.31	2,770.0	-1,738.8	-130.9	1,743.8	0.00	0.00	
3,500.0	44.17	184.31	2,841.7	-1,808.3	-136.1	1,813.4	0.00	0.00	
3,600.0	44.17	184.31	2,913.5	-1,877.8	-141.4	1,883.1	0.00	0.00	
3,700.0	44.17	184.31	2,985.2	-1,947.3	-146.6	1,952.8	0.00	0.00	
3,800.0	44.17	184.31	3,056.9	-2,016.8	-151.8	2,022.5	0.00	0.00	
3,900.0	44.17	184.31	3,128.7	-2,086.2	-157.1	2,092.1	0.00	0.00	
4,000.0	44.17	184.31	3,200.4	-2,155.7	-162.3	2,161.8	0.00	0.00	
4,100.0	44.17	184.31	3,272.1	-2,225.2	-167.5	2,231.5	0.00	0.00	
4,200.0	44.17	184.31	3,343.8	-2,294.7	-172.7	2,301.2	0.00	0.00	
4,300.0	44.17	184.31	3,415.6	-2,364.2	-178.0	2,370.9	0.00	0.00	
4,400.0	44.17	184.31	3,487.3	-2,433.6	-183.2	2,440.5	0.00	0.00	
4,500.0	44.17	184.31	3,559.0	-2,503.1	-188.4	2,510.2	0.00	0.00	
4,600.0	44.17	184.31	3,630.8	-2,572.6	-193.7	2,579.9	0.00	0.00	
4,700.0	44.17	184.31	3,702.5	-2,642.1	-198.9	2,649.6	0.00	0.00	
4,800.0	44.17	184.31	3,774.2	-2,711.6	-204.1	2,719.2	0.00	0.00	
4,900.0	44.17	184.31	3,845.9	-2,781.0	-209.4	2,788.9	0.00	0.00	
5,000.0	44.17	184.31	3,917.7	-2,850.5	-214.6	2,858.6	0.00	0.00	

Cathedral Energy Services

Planning Report

Database:	EDM 5000.1 US Multi Users DB	Local Co-ordinate Reference:	Well EF02D-32 G29 595
Company:	EnCana Oil & Gas (USA) Inc	TVD Reference:	KBE @ 6118.0ft (Original Well Elev)
Project:	North Piceance	MD Reference:	KBE @ 6118.0ft (Original Well Elev)
Site:	G29 595	North Reference:	True
Well:	EF02D-32 G29 595	Survey Calculation Method:	Minimum Curvature
Wellbore:	DD		
Design:	Plan #1		

Planned Survey									
Measured Depth (ft)	Inclination (°)	Azimuth (°)	Vertical Depth (ft)	+N/-S (ft)	+E/-W (ft)	Vertical Section (ft)	Dogleg Rate (°/100ft)	Build Rate (°/100ft)	Comments / Formations
5,100.0	44.17	184.31	3,989.4	-2,920.0	-219.8	2,928.3	0.00	0.00	
5,200.0	44.17	184.31	4,061.1	-2,989.5	-225.1	2,998.0	0.00	0.00	
5,300.0	44.17	184.31	4,132.9	-3,059.0	-230.3	3,067.6	0.00	0.00	
5,400.0	44.17	184.31	4,204.6	-3,128.5	-235.5	3,137.3	0.00	0.00	
5,500.0	44.17	184.31	4,276.3	-3,197.9	-240.7	3,207.0	0.00	0.00	
5,600.0	44.17	184.31	4,348.0	-3,267.4	-246.0	3,276.7	0.00	0.00	
5,700.0	44.17	184.31	4,419.8	-3,336.9	-251.2	3,346.3	0.00	0.00	
5,800.0	44.17	184.31	4,491.5	-3,406.4	-256.4	3,416.0	0.00	0.00	
5,900.0	44.17	184.31	4,563.2	-3,475.9	-261.7	3,485.7	0.00	0.00	
6,000.0	44.17	184.31	4,635.0	-3,545.3	-266.9	3,555.4	0.00	0.00	
6,100.0	44.17	184.31	4,706.7	-3,614.8	-272.1	3,625.0	0.00	0.00	
6,200.0	44.17	184.31	4,778.4	-3,684.3	-277.4	3,694.7	0.00	0.00	
6,275.1	44.17	184.31	4,832.3	-3,736.4	-281.3	3,747.0	0.00	0.00	Start Drop -3.00
6,300.0	43.42	184.31	4,850.3	-3,753.7	-282.6	3,764.3	3.00	-3.00	
6,400.0	40.42	184.31	4,924.7	-3,820.3	-287.6	3,831.1	3.00	-3.00	
6,500.0	37.42	184.31	5,002.5	-3,882.9	-292.3	3,893.9	3.00	-3.00	
6,600.0	34.42	184.31	5,083.4	-3,941.4	-296.7	3,952.6	3.00	-3.00	
6,700.0	31.42	184.31	5,167.4	-3,995.6	-300.8	4,006.9	3.00	-3.00	
6,800.0	28.42	184.31	5,254.0	-4,045.3	-304.5	4,056.8	3.00	-3.00	
6,900.0	25.42	184.31	5,343.2	-4,090.5	-307.9	4,102.0	3.00	-3.00	
7,000.0	22.42	184.31	5,434.6	-4,130.9	-311.0	4,142.6	3.00	-3.00	
7,100.0	19.42	184.31	5,528.0	-4,166.5	-313.7	4,178.3	3.00	-3.00	
7,199.9	16.42	184.31	5,623.0	-4,197.1	-316.0	4,209.0	3.00	-3.00	WF
7,200.0	16.42	184.31	5,623.1	-4,197.2	-316.0	4,209.1	3.00	-3.00	
7,241.5	15.18	184.31	5,663.0	-4,208.4	-316.8	4,220.3	3.00	-3.00	TOG
7,300.0	13.42	184.31	5,719.7	-4,222.9	-317.9	4,234.8	3.00	-3.00	
7,400.0	10.42	184.31	5,817.6	-4,243.5	-319.5	4,255.5	3.00	-3.00	
7,500.0	7.42	184.31	5,916.3	-4,258.9	-320.6	4,271.0	3.00	-3.00	
7,600.0	4.42	184.31	6,015.8	-4,269.2	-321.4	4,281.3	3.00	-3.00	
7,700.0	1.42	184.31	6,115.7	-4,274.3	-321.8	4,286.4	3.00	-3.00	
7,747.3	0.00	0.00	6,163.0	-4,274.9	-321.8	4,287.0	3.00	-3.00	EOD; Inc=0° - EF02D-32 G29 595 TOG
7,800.0	0.00	0.00	6,215.7	-4,274.9	-321.8	4,287.0	0.00	0.00	
7,900.0	0.00	0.00	6,315.7	-4,274.9	-321.8	4,287.0	0.00	0.00	
8,000.0	0.00	0.00	6,415.7	-4,274.9	-321.8	4,287.0	0.00	0.00	
8,100.0	0.00	0.00	6,515.7	-4,274.9	-321.8	4,287.0	0.00	0.00	
8,200.0	0.00	0.00	6,615.7	-4,274.9	-321.8	4,287.0	0.00	0.00	
8,300.0	0.00	0.00	6,715.7	-4,274.9	-321.8	4,287.0	0.00	0.00	
8,400.0	0.00	0.00	6,815.7	-4,274.9	-321.8	4,287.0	0.00	0.00	
8,500.0	0.00	0.00	6,915.7	-4,274.9	-321.8	4,287.0	0.00	0.00	
8,600.0	0.00	0.00	7,015.7	-4,274.9	-321.8	4,287.0	0.00	0.00	
8,700.0	0.00	0.00	7,115.7	-4,274.9	-321.8	4,287.0	0.00	0.00	
8,800.0	0.00	0.00	7,215.7	-4,274.9	-321.8	4,287.0	0.00	0.00	
8,900.0	0.00	0.00	7,315.7	-4,274.9	-321.8	4,287.0	0.00	0.00	
9,000.0	0.00	0.00	7,415.7	-4,274.9	-321.8	4,287.0	0.00	0.00	
9,100.0	0.00	0.00	7,515.7	-4,274.9	-321.8	4,287.0	0.00	0.00	
9,200.0	0.00	0.00	7,615.7	-4,274.9	-321.8	4,287.0	0.00	0.00	
9,300.0	0.00	0.00	7,715.7	-4,274.9	-321.8	4,287.0	0.00	0.00	
9,400.0	0.00	0.00	7,815.7	-4,274.9	-321.8	4,287.0	0.00	0.00	
9,500.0	0.00	0.00	7,915.7	-4,274.9	-321.8	4,287.0	0.00	0.00	
9,600.0	0.00	0.00	8,015.7	-4,274.9	-321.8	4,287.0	0.00	0.00	
9,700.0	0.00	0.00	8,115.7	-4,274.9	-321.8	4,287.0	0.00	0.00	
9,800.0	0.00	0.00	8,215.7	-4,274.9	-321.8	4,287.0	0.00	0.00	

Cathedral Energy Services

Planning Report

Database:	EDM 5000.1 US Multi Users DB	Local Co-ordinate Reference:	Well EF02D-32 G29 595
Company:	EnCana Oil & Gas (USA) Inc	TVD Reference:	KBE @ 6118.0ft (Original Well Elev)
Project:	North Piceance	MD Reference:	KBE @ 6118.0ft (Original Well Elev)
Site:	G29 595	North Reference:	True
Well:	EF02D-32 G29 595	Survey Calculation Method:	Minimum Curvature
Wellbore:	DD		
Design:	Plan #1		

Planned Survey									
Measured Depth (ft)	Inclination (°)	Azimuth (°)	Vertical Depth (ft)	+N/-S (ft)	+E/-W (ft)	Vertical Section (ft)	Dogleg Rate (°/100ft)	Build Rate (°/100ft)	Comments / Formations
9,900.0	0.00	0.00	8,315.7	-4,274.9	-321.8	4,287.0	0.00	0.00	
10,000.0	0.00	0.00	8,415.7	-4,274.9	-321.8	4,287.0	0.00	0.00	
10,100.0	0.00	0.00	8,515.7	-4,274.9	-321.8	4,287.0	0.00	0.00	
10,200.0	0.00	0.00	8,615.7	-4,274.9	-321.8	4,287.0	0.00	0.00	
10,300.0	0.00	0.00	8,715.7	-4,274.9	-321.8	4,287.0	0.00	0.00	
10,400.0	0.00	0.00	8,815.7	-4,274.9	-321.8	4,287.0	0.00	0.00	
10,500.0	0.00	0.00	8,915.7	-4,274.9	-321.8	4,287.0	0.00	0.00	
10,600.0	0.00	0.00	9,015.7	-4,274.9	-321.8	4,287.0	0.00	0.00	
10,700.0	0.00	0.00	9,115.7	-4,274.9	-321.8	4,287.0	0.00	0.00	
10,800.0	0.00	0.00	9,215.7	-4,274.9	-321.8	4,287.0	0.00	0.00	
10,807.3	0.00	0.00	9,223.0	-4,274.9	-321.8	4,287.0	0.00	0.00	Rollins
10,900.0	0.00	0.00	9,315.7	-4,274.9	-321.8	4,287.0	0.00	0.00	
10,957.3	0.00	0.00	9,373.0	-4,274.9	-321.8	4,287.0	0.00	0.00	Drillers TD @ 10957.3' MD - EF02D-32 G29 59
11,000.0	0.00	0.00	9,415.7	-4,274.9	-321.8	4,287.0	0.00	0.00	
11,100.0	0.00	0.00	9,515.7	-4,274.9	-321.8	4,287.0	0.00	0.00	
11,200.0	0.00	0.00	9,615.7	-4,274.9	-321.8	4,287.0	0.00	0.00	
11,300.0	0.00	0.00	9,715.7	-4,274.9	-321.8	4,287.0	0.00	0.00	
11,400.0	0.00	0.00	9,815.7	-4,274.9	-321.8	4,287.0	0.00	0.00	
11,500.0	0.00	0.00	9,915.7	-4,274.9	-321.8	4,287.0	0.00	0.00	
11,600.0	0.00	0.00	10,015.7	-4,274.9	-321.8	4,287.0	0.00	0.00	
11,700.0	0.00	0.00	10,115.7	-4,274.9	-321.8	4,287.0	0.00	0.00	
11,800.0	0.00	0.00	10,215.7	-4,274.9	-321.8	4,287.0	0.00	0.00	
11,900.0	0.00	0.00	10,315.7	-4,274.9	-321.8	4,287.0	0.00	0.00	
12,000.0	0.00	0.00	10,415.7	-4,274.9	-321.8	4,287.0	0.00	0.00	
12,100.0	0.00	0.00	10,515.7	-4,274.9	-321.8	4,287.0	0.00	0.00	
12,200.0	0.00	0.00	10,615.7	-4,274.9	-321.8	4,287.0	0.00	0.00	
12,300.0	0.00	0.00	10,715.7	-4,274.9	-321.8	4,287.0	0.00	0.00	
12,400.0	0.00	0.00	10,815.7	-4,274.9	-321.8	4,287.0	0.00	0.00	
12,500.0	0.00	0.00	10,915.7	-4,274.9	-321.8	4,287.0	0.00	0.00	
12,584.3	0.00	0.00	11,000.0	-4,274.9	-321.8	4,287.0	0.00	0.00	Permit TD @ 12584.3' MD

Targets									
Target Name	Dip Angle (°)	Dip Dir. (°)	TVD (ft)	+N/-S (ft)	+E/-W (ft)	Northing (ft)	Easting (ft)	Latitude	Longitude
EF02D-32 G29 595 TOC - hit/miss target - Shape - Point	0.00	0.00	6,163.0	-4,274.9	-321.8	1,644,286.73	2,274,288.15	39° 34' 26.80 N	108° 4' 29.41 W
EF02D-32 G29 595 BHL - plan hits target center - Rectangle (sides W30.0 H50.0 D0.0)	0.00	0.00	9,373.0	-4,274.9	-321.8	1,644,286.73	2,274,288.15	39° 34' 26.80 N	108° 4' 29.41 W

Cathedral Energy Services

Planning Report

Database: EDM 5000.1 US Multi Users DB	Local Co-ordinate Reference: Well EF02D-32 G29 595
Company: EnCana Oil & Gas (USA) Inc	TVD Reference: KBE @ 6118.0ft (Original Well Elev)
Project: North Piceance	MD Reference: KBE @ 6118.0ft (Original Well Elev)
Site: G29 595	North Reference: True
Well: EF02D-32 G29 595	Survey Calculation Method: Minimum Curvature
Wellbore: DD	
Design: Plan #1	

Formations						
Measured Depth (ft)	Vertical Depth (ft)	Name	Lithology	Dip (°)	Dip Direction (°)	
7,199.9	5,623.0	WF		0.00		
7,241.5	5,663.0	TOG		0.00		
10,807.3	9,223.0	Rollins		0.00		

Plan Annotations					
Measured Depth (ft)	Vertical Depth (ft)	Local Coordinates		Comment	
		+N/-S (ft)	+E/-W (ft)		
200.0	200.0	0.0	0.0	KOP @ 200'	
1,672.3	1,530.7	-538.4	-40.5	EOB; Inc=44.17°	
6,275.1	4,832.3	-3,736.4	-281.3	Start Drop -3.00	
7,747.3	6,163.0	-4,274.9	-321.8	EOD; Inc=0°	
10,957.3	9,373.0	-4,274.9	-321.8	Drillers TD @ 10957.3' MD	
12,584.3	11,000.0	-4,274.9	-321.8	Permit TD @ 12584.3' MD	