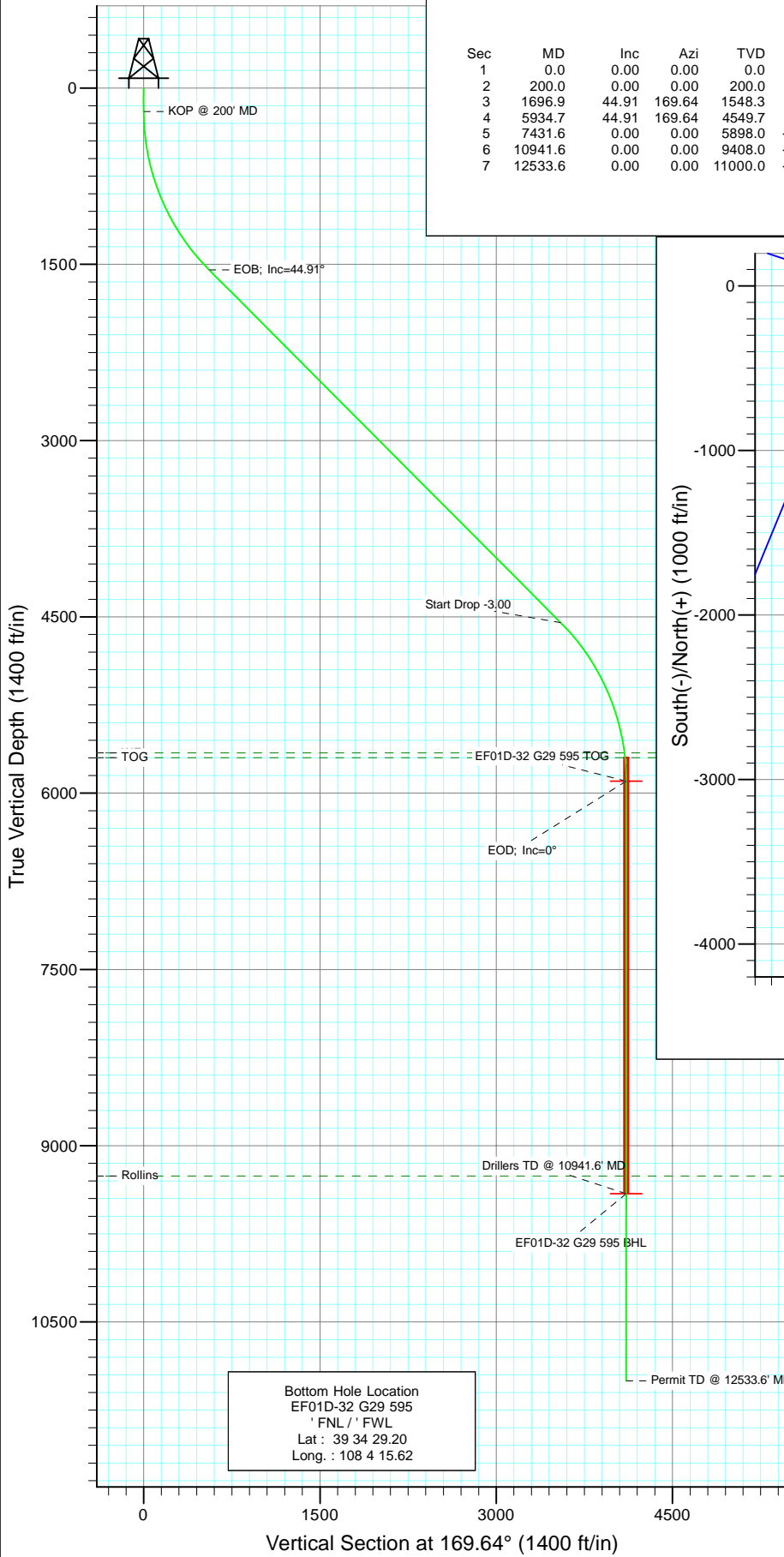
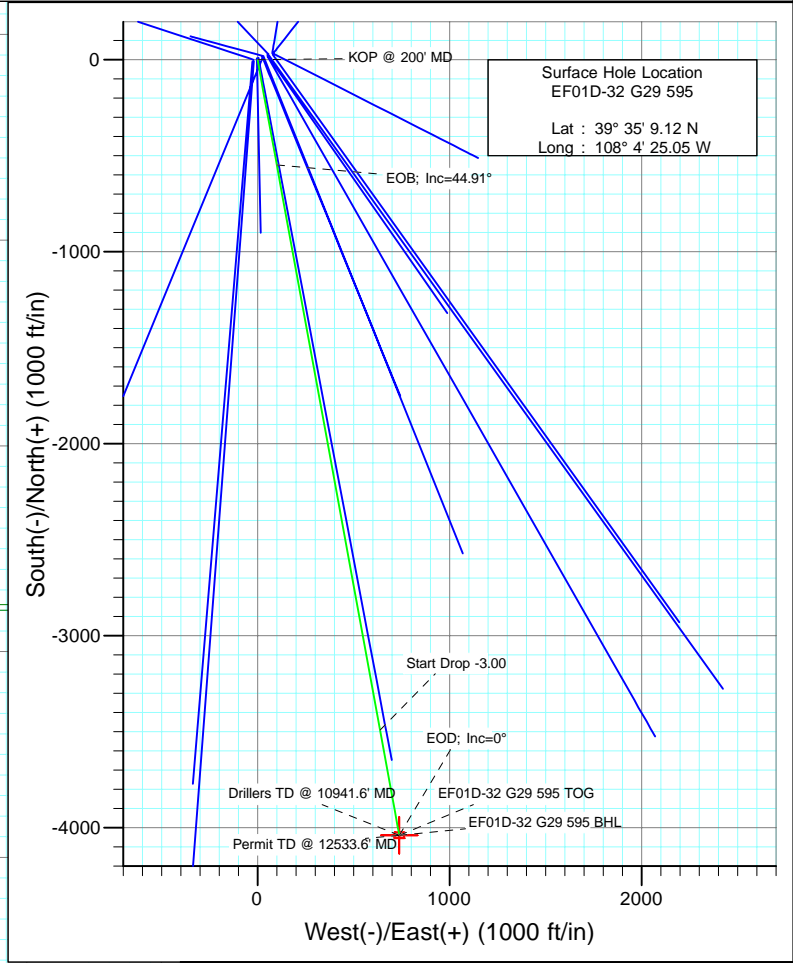




Project: North Piceance  
 Site: G29 595  
 Well: EF01D-32 G29 595  
 Wellbore: DD  
 Design: Plan #1



SECTION DETAILS										
Sec	MD	Inc	Azi	TVD	+N/-S	+E/-W	Dleg	TFace	VSect	Target
1	0.0	0.00	0.00	0.0	0.0	0.0	0.00	0.00	0.0	
2	200.0	0.00	0.00	200.0	0.0	0.0	0.00	0.00	0.0	
3	1696.9	44.91	169.64	1548.3	-548.1	100.2	3.00	169.64	557.2	
4	5934.7	44.91	169.64	4549.7	-3491.0	638.2	0.00	0.00	3548.9	
5	7431.6	0.00	0.00	5898.0	-4039.1	738.4	3.00	180.00	4106.0	EF01D-32 G29 595 TOG
6	10941.6	0.00	0.00	9408.0	-4039.1	738.4	0.00	0.00	4106.0	EF01D-32 G29 595 BHL
7	12533.6	0.00	0.00	11000.0	-4039.1	738.4	0.00	0.00	4106.0	



FORMATION TOP DETAILS		
TVDPath	MDPath	Formation
5658.0	7190.9	WF
5698.0	7231.2	TOG
9258.0	10791.6	Rollins

Azimuths to True North  
Magnetic North: 10.50°

Magnetic Field  
Strength: 52417.7snT  
Dip Angle: 65.84°  
Date: 6/18/2010  
Model: IGRF200510

DESIGN DETAILS: Plan #1					
105XXX; BH					
KBE @ 6118.0ft (Original Well Elev)					
Target	Azimuth	Origin	N/S	E/W	From TVD
EF01D-32 G29 595 BHL	169.64	Slot	0.0	0.0	0.0

Bottom Hole Location  
 EF01D-32 G29 595  
 ' FNL / ' FWL  
 Lat : 39 34 29.20  
 Long. : 108 4 15.62

# Cathedral Energy Services

## Planning Report

<b>Database:</b> EDM 5000.1 US Multi Users DB	<b>Local Co-ordinate Reference:</b> Well EF01D-32 G29 595
<b>Company:</b> EnCana Oil & Gas (USA) Inc	<b>TVD Reference:</b> KBE @ 6118.0ft (Original Well Elev)
<b>Project:</b> North Piceance	<b>MD Reference:</b> KBE @ 6118.0ft (Original Well Elev)
<b>Site:</b> G29 595	<b>North Reference:</b> True
<b>Well:</b> EF01D-32 G29 595	<b>Survey Calculation Method:</b> Minimum Curvature
<b>Wellbore:</b> DD	
<b>Design:</b> Plan #1	

<b>Project</b> North Piceance		
<b>Map System:</b> US State Plane 1983	<b>System Datum:</b> Mean Sea Level	
<b>Geo Datum:</b> North American Datum 1983		
<b>Map Zone:</b> Colorado Central Zone		

<b>Site</b> G29 595					
<b>Site Position:</b>		<b>Northing:</b>	1,648,557.90 ft	<b>Latitude:</b>	39° 35' 9.12 N
<b>From:</b>	Lat/Long	<b>Easting:</b>	2,274,729.57 ft	<b>Longitude:</b>	108° 4' 25.32 W
<b>Position Uncertainty:</b>	0.0 ft	<b>Slot Radius:</b>	13.200 in	<b>Grid Convergence:</b>	-1.62 °

<b>Well</b> EF01D-32 G29 595					
<b>Well Position</b>	<b>+N/-S</b>	0.0 ft	<b>Northing:</b>	1,648,557.29 ft	<b>Latitude:</b> 39° 35' 9.12 N
	<b>+E/-W</b>	0.0 ft	<b>Easting:</b>	2,274,750.70 ft	<b>Longitude:</b> 108° 4' 25.05 W
<b>Position Uncertainty</b>		0.0 ft	<b>Wellhead Elevation:</b>	ft	<b>Ground Level:</b> 6,003.0 ft

<b>Wellbore</b> DD					
<b>Magnetics</b>	<b>Model Name</b>	<b>Sample Date</b>	<b>Declination</b>	<b>Dip Angle</b>	<b>Field Strength</b>
	IGRF200510	6/18/2010	(°)	(°)	(nT)
			10.50	65.84	52,418

<b>Design</b> Plan #1					
<b>Audit Notes:</b>					
<b>Version:</b>	<b>Phase:</b>	PLAN	<b>Tie On Depth:</b>	0.0	
<b>Vertical Section:</b>	<b>Depth From (TVD)</b>	<b>+N/-S</b>	<b>+E/-W</b>	<b>Direction</b>	
	(ft)	(ft)	(ft)	(°)	
	0.0	0.0	0.0	169.64	

<b>Plan Sections</b>										
Measured Depth (ft)	Inclination (°)	Azimuth (°)	Vertical Depth (ft)	+N/-S (ft)	+E/-W (ft)	Dogleg Rate (°/100ft)	Build Rate (°/100ft)	Turn Rate (°/100ft)	TFO (°)	Target
0.0	0.00	0.00	0.0	0.0	0.0	0.00	0.00	0.00	0.00	
200.0	0.00	0.00	200.0	0.0	0.0	0.00	0.00	0.00	0.00	
1,696.9	44.91	169.64	1,548.3	-548.1	100.2	3.00	3.00	0.00	169.64	
5,934.7	44.91	169.64	4,549.7	-3,491.0	638.2	0.00	0.00	0.00	0.00	
7,431.6	0.00	0.00	5,898.0	-4,039.1	738.4	3.00	-3.00	0.00	180.00	EF01D-32 G29 595 T
10,941.6	0.00	0.00	9,408.0	-4,039.1	738.4	0.00	0.00	0.00	0.00	EF01D-32 G29 595 B
12,533.6	0.00	0.00	11,000.0	-4,039.1	738.4	0.00	0.00	0.00	0.00	

# Cathedral Energy Services

## Planning Report

<b>Database:</b>	EDM 5000.1 US Multi Users DB	<b>Local Co-ordinate Reference:</b>	Well EF01D-32 G29 595
<b>Company:</b>	EnCana Oil & Gas (USA) Inc	<b>TVD Reference:</b>	KBE @ 6118.0ft (Original Well Elev)
<b>Project:</b>	North Piceance	<b>MD Reference:</b>	KBE @ 6118.0ft (Original Well Elev)
<b>Site:</b>	G29 595	<b>North Reference:</b>	True
<b>Well:</b>	EF01D-32 G29 595	<b>Survey Calculation Method:</b>	Minimum Curvature
<b>Wellbore:</b>	DD		
<b>Design:</b>	Plan #1		

### Planned Survey

Measured Depth (ft)	Inclination (°)	Azimuth (°)	Vertical Depth (ft)	+N/-S (ft)	+E/-W (ft)	Vertical Section (ft)	Dogleg Rate (°/100ft)	Build Rate (°/100ft)	Comments / Formations
0.0	0.00	0.00	0.0	0.0	0.0	0.0	0.00	0.00	
100.0	0.00	0.00	100.0	0.0	0.0	0.0	0.00	0.00	
200.0	0.00	0.00	200.0	0.0	0.0	0.0	0.00	0.00	KOP @ 200' MD
300.0	3.00	169.64	300.0	-2.6	0.5	2.6	3.00	3.00	
400.0	6.00	169.64	399.6	-10.3	1.9	10.5	3.00	3.00	
500.0	9.00	169.64	498.8	-23.1	4.2	23.5	3.00	3.00	
600.0	12.00	169.64	597.1	-41.1	7.5	41.7	3.00	3.00	
700.0	15.00	169.64	694.3	-64.0	11.7	65.1	3.00	3.00	
800.0	18.00	169.64	790.2	-92.0	16.8	93.5	3.00	3.00	
900.0	21.00	169.64	884.4	-124.8	22.8	126.9	3.00	3.00	
1,000.0	24.00	169.64	976.8	-162.4	29.7	165.1	3.00	3.00	
1,100.0	27.00	169.64	1,067.1	-204.8	37.4	208.2	3.00	3.00	
1,200.0	30.00	169.64	1,154.9	-251.7	46.0	255.9	3.00	3.00	
1,300.0	33.00	169.64	1,240.2	-303.1	55.4	308.1	3.00	3.00	
1,400.0	36.00	169.64	1,322.6	-358.8	65.6	364.8	3.00	3.00	
1,500.0	39.00	169.64	1,401.9	-418.7	76.5	425.6	3.00	3.00	
1,600.0	42.00	169.64	1,477.9	-482.6	88.2	490.6	3.00	3.00	
1,696.9	44.91	169.64	1,548.3	-548.1	100.2	557.2	3.00	3.00	EOB; Inc=44.91°
1,700.0	44.91	169.64	1,550.5	-550.3	100.6	559.4	0.00	0.00	
1,800.0	44.91	169.64	1,621.3	-619.7	113.3	630.0	0.00	0.00	
1,900.0	44.91	169.64	1,692.1	-689.2	126.0	700.6	0.00	0.00	
2,000.0	44.91	169.64	1,763.0	-758.6	138.7	771.2	0.00	0.00	
2,100.0	44.91	169.64	1,833.8	-828.0	151.4	841.8	0.00	0.00	
2,200.0	44.91	169.64	1,904.6	-897.5	164.1	912.4	0.00	0.00	
2,300.0	44.91	169.64	1,975.4	-966.9	176.8	983.0	0.00	0.00	
2,400.0	44.91	169.64	2,046.3	-1,036.4	189.5	1,053.5	0.00	0.00	
2,500.0	44.91	169.64	2,117.1	-1,105.8	202.2	1,124.1	0.00	0.00	
2,600.0	44.91	169.64	2,187.9	-1,175.3	214.8	1,194.7	0.00	0.00	
2,700.0	44.91	169.64	2,258.7	-1,244.7	227.5	1,265.3	0.00	0.00	
2,800.0	44.91	169.64	2,329.6	-1,314.2	240.2	1,335.9	0.00	0.00	
2,900.0	44.91	169.64	2,400.4	-1,383.6	252.9	1,406.5	0.00	0.00	
3,000.0	44.91	169.64	2,471.2	-1,453.0	265.6	1,477.1	0.00	0.00	
3,100.0	44.91	169.64	2,542.0	-1,522.5	278.3	1,547.7	0.00	0.00	
3,200.0	44.91	169.64	2,612.9	-1,591.9	291.0	1,618.3	0.00	0.00	
3,300.0	44.91	169.64	2,683.7	-1,661.4	303.7	1,688.9	0.00	0.00	
3,400.0	44.91	169.64	2,754.5	-1,730.8	316.4	1,759.5	0.00	0.00	
3,500.0	44.91	169.64	2,825.3	-1,800.3	329.1	1,830.1	0.00	0.00	
3,600.0	44.91	169.64	2,896.2	-1,869.7	341.8	1,900.7	0.00	0.00	
3,700.0	44.91	169.64	2,967.0	-1,939.1	354.5	1,971.3	0.00	0.00	
3,800.0	44.91	169.64	3,037.8	-2,008.6	367.2	2,041.9	0.00	0.00	
3,900.0	44.91	169.64	3,108.6	-2,078.0	379.9	2,112.5	0.00	0.00	
4,000.0	44.91	169.64	3,179.5	-2,147.5	392.6	2,183.1	0.00	0.00	
4,100.0	44.91	169.64	3,250.3	-2,216.9	405.3	2,253.7	0.00	0.00	
4,200.0	44.91	169.64	3,321.1	-2,286.4	418.0	2,324.3	0.00	0.00	
4,300.0	44.91	169.64	3,392.0	-2,355.8	430.7	2,394.9	0.00	0.00	
4,400.0	44.91	169.64	3,462.8	-2,425.3	443.4	2,465.5	0.00	0.00	
4,500.0	44.91	169.64	3,533.6	-2,494.7	456.1	2,536.0	0.00	0.00	
4,600.0	44.91	169.64	3,604.4	-2,564.1	468.7	2,606.6	0.00	0.00	
4,700.0	44.91	169.64	3,675.3	-2,633.6	481.4	2,677.2	0.00	0.00	
4,800.0	44.91	169.64	3,746.1	-2,703.0	494.1	2,747.8	0.00	0.00	
4,900.0	44.91	169.64	3,816.9	-2,772.5	506.8	2,818.4	0.00	0.00	
5,000.0	44.91	169.64	3,887.7	-2,841.9	519.5	2,889.0	0.00	0.00	

# Cathedral Energy Services

## Planning Report

<b>Database:</b>	EDM 5000.1 US Multi Users DB	<b>Local Co-ordinate Reference:</b>	Well EF01D-32 G29 595
<b>Company:</b>	EnCana Oil & Gas (USA) Inc	<b>TVD Reference:</b>	KBE @ 6118.0ft (Original Well Elev)
<b>Project:</b>	North Piceance	<b>MD Reference:</b>	KBE @ 6118.0ft (Original Well Elev)
<b>Site:</b>	G29 595	<b>North Reference:</b>	True
<b>Well:</b>	EF01D-32 G29 595	<b>Survey Calculation Method:</b>	Minimum Curvature
<b>Wellbore:</b>	DD		
<b>Design:</b>	Plan #1		

Planned Survey									
Measured Depth (ft)	Inclination (°)	Azimuth (°)	Vertical Depth (ft)	+N/-S (ft)	+E/-W (ft)	Vertical Section (ft)	Dogleg Rate (°/100ft)	Build Rate (°/100ft)	Comments / Formations
5,100.0	44.91	169.64	3,958.6	-2,911.4	532.2	2,959.6	0.00	0.00	
5,200.0	44.91	169.64	4,029.4	-2,980.8	544.9	3,030.2	0.00	0.00	
5,300.0	44.91	169.64	4,100.2	-3,050.3	557.6	3,100.8	0.00	0.00	
5,400.0	44.91	169.64	4,171.0	-3,119.7	570.3	3,171.4	0.00	0.00	
5,500.0	44.91	169.64	4,241.9	-3,189.1	583.0	3,242.0	0.00	0.00	
5,600.0	44.91	169.64	4,312.7	-3,258.6	595.7	3,312.6	0.00	0.00	
5,700.0	44.91	169.64	4,383.5	-3,328.0	608.4	3,383.2	0.00	0.00	
5,800.0	44.91	169.64	4,454.3	-3,397.5	621.1	3,453.8	0.00	0.00	
5,900.0	44.91	169.64	4,525.2	-3,466.9	633.8	3,524.4	0.00	0.00	
5,934.7	44.91	169.64	4,549.7	-3,491.0	638.2	3,548.9	0.00	0.00	Start Drop -3.00
6,000.0	42.95	169.64	4,596.8	-3,535.6	646.3	3,594.2	3.00	-3.00	
6,100.0	39.95	169.64	4,671.7	-3,600.7	658.2	3,660.4	3.00	-3.00	
6,200.0	36.95	169.64	4,750.0	-3,661.8	669.4	3,722.5	3.00	-3.00	
6,300.0	33.95	169.64	4,831.5	-3,718.9	679.8	3,780.5	3.00	-3.00	
6,400.0	30.95	169.64	4,915.9	-3,771.7	689.5	3,834.2	3.00	-3.00	
6,500.0	27.95	169.64	5,002.9	-3,820.0	698.3	3,883.3	3.00	-3.00	
6,600.0	24.95	169.64	5,092.5	-3,863.8	706.3	3,927.9	3.00	-3.00	
6,700.0	21.95	169.64	5,184.2	-3,903.0	713.5	3,967.6	3.00	-3.00	
6,800.0	18.95	169.64	5,277.9	-3,937.3	719.8	4,002.6	3.00	-3.00	
6,900.0	15.95	169.64	5,373.3	-3,966.8	725.2	4,032.5	3.00	-3.00	
7,000.0	12.95	169.64	5,470.1	-3,991.3	729.7	4,057.5	3.00	-3.00	
7,100.0	9.95	169.64	5,568.1	-4,010.9	733.2	4,077.3	3.00	-3.00	
7,190.9	7.22	169.64	5,658.0	-4,024.2	735.7	4,090.9	3.00	-3.00	WF
7,200.0	6.95	169.64	5,667.0	-4,025.3	735.9	4,092.0	3.00	-3.00	
7,231.2	6.01	169.64	5,698.0	-4,028.8	736.5	4,095.5	3.00	-3.00	TOG
7,300.0	3.95	169.64	5,766.5	-4,034.7	737.6	4,101.5	3.00	-3.00	
7,400.0	0.95	169.64	5,866.4	-4,038.8	738.3	4,105.8	3.00	-3.00	
7,431.6	0.00	0.00	5,898.0	-4,039.1	738.4	4,106.0	3.00	-3.00	EOD; Inc=0° - EF01D-32 G29 595 TOG
7,500.0	0.00	0.00	5,966.4	-4,039.1	738.4	4,106.0	0.00	0.00	
7,600.0	0.00	0.00	6,066.4	-4,039.1	738.4	4,106.0	0.00	0.00	
7,700.0	0.00	0.00	6,166.4	-4,039.1	738.4	4,106.0	0.00	0.00	
7,800.0	0.00	0.00	6,266.4	-4,039.1	738.4	4,106.0	0.00	0.00	
7,900.0	0.00	0.00	6,366.4	-4,039.1	738.4	4,106.0	0.00	0.00	
8,000.0	0.00	0.00	6,466.4	-4,039.1	738.4	4,106.0	0.00	0.00	
8,100.0	0.00	0.00	6,566.4	-4,039.1	738.4	4,106.0	0.00	0.00	
8,200.0	0.00	0.00	6,666.4	-4,039.1	738.4	4,106.0	0.00	0.00	
8,300.0	0.00	0.00	6,766.4	-4,039.1	738.4	4,106.0	0.00	0.00	
8,400.0	0.00	0.00	6,866.4	-4,039.1	738.4	4,106.0	0.00	0.00	
8,500.0	0.00	0.00	6,966.4	-4,039.1	738.4	4,106.0	0.00	0.00	
8,600.0	0.00	0.00	7,066.4	-4,039.1	738.4	4,106.0	0.00	0.00	
8,700.0	0.00	0.00	7,166.4	-4,039.1	738.4	4,106.0	0.00	0.00	
8,800.0	0.00	0.00	7,266.4	-4,039.1	738.4	4,106.0	0.00	0.00	
8,900.0	0.00	0.00	7,366.4	-4,039.1	738.4	4,106.0	0.00	0.00	
9,000.0	0.00	0.00	7,466.4	-4,039.1	738.4	4,106.0	0.00	0.00	
9,100.0	0.00	0.00	7,566.4	-4,039.1	738.4	4,106.0	0.00	0.00	
9,200.0	0.00	0.00	7,666.4	-4,039.1	738.4	4,106.0	0.00	0.00	
9,300.0	0.00	0.00	7,766.4	-4,039.1	738.4	4,106.0	0.00	0.00	
9,400.0	0.00	0.00	7,866.4	-4,039.1	738.4	4,106.0	0.00	0.00	
9,500.0	0.00	0.00	7,966.4	-4,039.1	738.4	4,106.0	0.00	0.00	
9,600.0	0.00	0.00	8,066.4	-4,039.1	738.4	4,106.0	0.00	0.00	
9,700.0	0.00	0.00	8,166.4	-4,039.1	738.4	4,106.0	0.00	0.00	
9,800.0	0.00	0.00	8,266.4	-4,039.1	738.4	4,106.0	0.00	0.00	

# Cathedral Energy Services

## Planning Report

<b>Database:</b>	EDM 5000.1 US Multi Users DB	<b>Local Co-ordinate Reference:</b>	Well EF01D-32 G29 595
<b>Company:</b>	EnCana Oil & Gas (USA) Inc	<b>TVD Reference:</b>	KBE @ 6118.0ft (Original Well Elev)
<b>Project:</b>	North Piceance	<b>MD Reference:</b>	KBE @ 6118.0ft (Original Well Elev)
<b>Site:</b>	G29 595	<b>North Reference:</b>	True
<b>Well:</b>	EF01D-32 G29 595	<b>Survey Calculation Method:</b>	Minimum Curvature
<b>Wellbore:</b>	DD		
<b>Design:</b>	Plan #1		

Planned Survey									
Measured Depth (ft)	Inclination (°)	Azimuth (°)	Vertical Depth (ft)	+N/-S (ft)	+E/-W (ft)	Vertical Section (ft)	Dogleg Rate (°/100ft)	Build Rate (°/100ft)	Comments / Formations
9,900.0	0.00	0.00	8,366.4	-4,039.1	738.4	4,106.0	0.00	0.00	
10,000.0	0.00	0.00	8,466.4	-4,039.1	738.4	4,106.0	0.00	0.00	
10,100.0	0.00	0.00	8,566.4	-4,039.1	738.4	4,106.0	0.00	0.00	
10,200.0	0.00	0.00	8,666.4	-4,039.1	738.4	4,106.0	0.00	0.00	
10,300.0	0.00	0.00	8,766.4	-4,039.1	738.4	4,106.0	0.00	0.00	
10,400.0	0.00	0.00	8,866.4	-4,039.1	738.4	4,106.0	0.00	0.00	
10,500.0	0.00	0.00	8,966.4	-4,039.1	738.4	4,106.0	0.00	0.00	
10,600.0	0.00	0.00	9,066.4	-4,039.1	738.4	4,106.0	0.00	0.00	
10,700.0	0.00	0.00	9,166.4	-4,039.1	738.4	4,106.0	0.00	0.00	
10,791.6	0.00	0.00	9,258.0	-4,039.1	738.4	4,106.0	0.00	0.00	Rollins
10,800.0	0.00	0.00	9,266.4	-4,039.1	738.4	4,106.0	0.00	0.00	
10,900.0	0.00	0.00	9,366.4	-4,039.1	738.4	4,106.0	0.00	0.00	
10,941.6	0.00	0.00	9,408.0	-4,039.1	738.4	4,106.0	0.00	0.00	Drillers TD @ 10941.6' MD - EF01D-32 G29 59
11,000.0	0.00	0.00	9,466.4	-4,039.1	738.4	4,106.0	0.00	0.00	
11,100.0	0.00	0.00	9,566.4	-4,039.1	738.4	4,106.0	0.00	0.00	
11,200.0	0.00	0.00	9,666.4	-4,039.1	738.4	4,106.0	0.00	0.00	
11,300.0	0.00	0.00	9,766.4	-4,039.1	738.4	4,106.0	0.00	0.00	
11,400.0	0.00	0.00	9,866.4	-4,039.1	738.4	4,106.0	0.00	0.00	
11,500.0	0.00	0.00	9,966.4	-4,039.1	738.4	4,106.0	0.00	0.00	
11,600.0	0.00	0.00	10,066.4	-4,039.1	738.4	4,106.0	0.00	0.00	
11,700.0	0.00	0.00	10,166.4	-4,039.1	738.4	4,106.0	0.00	0.00	
11,800.0	0.00	0.00	10,266.4	-4,039.1	738.4	4,106.0	0.00	0.00	
11,900.0	0.00	0.00	10,366.4	-4,039.1	738.4	4,106.0	0.00	0.00	
12,000.0	0.00	0.00	10,466.4	-4,039.1	738.4	4,106.0	0.00	0.00	
12,100.0	0.00	0.00	10,566.4	-4,039.1	738.4	4,106.0	0.00	0.00	
12,200.0	0.00	0.00	10,666.4	-4,039.1	738.4	4,106.0	0.00	0.00	
12,300.0	0.00	0.00	10,766.4	-4,039.1	738.4	4,106.0	0.00	0.00	
12,400.0	0.00	0.00	10,866.4	-4,039.1	738.4	4,106.0	0.00	0.00	
12,500.0	0.00	0.00	10,966.4	-4,039.1	738.4	4,106.0	0.00	0.00	
12,533.6	0.00	0.00	11,000.0	-4,039.1	738.4	4,106.0	0.00	0.00	Permit TD @ 12533.6' MD

Targets									
Target Name	Dip Angle (°)	Dip Dir. (°)	TVD (ft)	+N/-S (ft)	+E/-W (ft)	Northing (ft)	Easting (ft)	Latitude	Longitude
EF01D-32 G29 595 BHL - hit/miss target - Shape - Rectangle (sides W30.0 H50.0 D0.0)	0.00	0.00	9,408.0	-4,039.1	738.4	1,644,498.89	2,275,374.38	39° 34' 29.20 N	108° 4' 15.62 W
EF01D-32 G29 595 TOC - plan hits target center - Point	0.00	0.00	5,898.0	-4,039.1	738.4	1,644,498.89	2,275,374.38	39° 34' 29.20 N	108° 4' 15.62 W

# Cathedral Energy Services

## Planning Report

<b>Database:</b> EDM 5000.1 US Multi Users DB	<b>Local Co-ordinate Reference:</b> Well EF01D-32 G29 595
<b>Company:</b> EnCana Oil & Gas (USA) Inc	<b>TVD Reference:</b> KBE @ 6118.0ft (Original Well Elev)
<b>Project:</b> North Piceance	<b>MD Reference:</b> KBE @ 6118.0ft (Original Well Elev)
<b>Site:</b> G29 595	<b>North Reference:</b> True
<b>Well:</b> EF01D-32 G29 595	<b>Survey Calculation Method:</b> Minimum Curvature
<b>Wellbore:</b> DD	
<b>Design:</b> Plan #1	

Formations						
Measured Depth (ft)	Vertical Depth (ft)	Name	Lithology	Dip (°)	Dip Direction (°)	
7,190.9	5,658.0	WF		0.00		
7,231.2	5,698.0	TOG		0.00		
10,791.6	9,258.0	Rollins		0.00		

Plan Annotations					
Measured Depth (ft)	Vertical Depth (ft)	Local Coordinates		Comment	
		+N/-S (ft)	+E/-W (ft)		
200.0	200.0	0.0	0.0	KOP @ 200' MD	
1,696.9	1,548.3	-548.1	100.2	EOB; Inc=44.91°	
5,934.7	4,549.7	-3,491.0	638.2	Start Drop -3.00	
7,431.6	5,898.0	-4,039.1	738.4	EOD; Inc=0°	
10,941.6	9,408.0	-4,039.1	738.4	Drillers TD @ 10941.6' MD	
12,533.6	11,000.0	-4,039.1	738.4	Permit TD @ 12533.6' MD	