

T5S, R95W, 6th P.M.

W.C. 1916 Brass
Cap 2.3' High, Post
Lat: 39.594056
Long: 108.068661

S89°58'46"W - 5286.68' (Meas.)

1916 Brass Cap
1.0' High, Pile of
Stones, Steel Post
Lat: 39.592061
Long: 108.087411

True Position

N. PARACHUTE
EF13D-28 G29 595
Elev. Graded Ground = 6099'

W.C. 1916 Brass
Cap 1.2' High
Lat: 39.586772
Long: 108.068647

True Position

29

NOTE:
THE PROPOSED BOTTOM HOLE FOR THIS WELL
IS LOCATED IN THE SW 1/4 SW 1/4 OF SECTION
28, T5S, R95W, 6th P.M. AT A DISTANCE OF
95' FSL 789' FWL. IT BEARS S35°38'03"E
3636.43' FROM THE PROPOSED WELL HEAD.

LINE TABLE		
LINE	BEARING	LENGTH
L1	N00°06'15"W	726.00'
L2	N00°05'49"W	712.80'
L3	N00°07'15"W	627.00'

NOTE:
SEE ADDENDUM PLAT FOR EXISTING
IMPROVEMENT WITHIN 400' OF THE
PROPOSED WELL DISTURBANCE.

1916 Brass Cap
2.0' High
Lat: 39.577565
Long: 108.678001

1916 Brass Cap
1.0' High
Lat: 39.577567
Long: 108.068633

True Position

S89°45'35"W - 2643.30' (Meas.)

S89°57'32"W - 2641.41' (Meas.)

W.C. 1916 Brass
Cap 1.5' High
Lat: 39.575816
Long: 108.087371

LEGEND:

- └─┘ = 90° SYMBOL
- = PROPOSED WELL HEAD.
- ▲ = SECTION CORNERS LOCATED.

PDOP = 5.2

NAD 83 (SURFACE LOCATION)	
LATITUDE	= 39°35'09.38" (39.585939)
LONGITUDE	= 108°04'24.04" (108.073344)
NAD 27 (SURFACE LOCATION)	
LATITUDE	= 39°35'09.46" (39.585961)
LONGITUDE	= 108°04'21.76" (108.072711)

EnCana OIL & GAS (USA) INC.

Well location, N. PARACHUTE EF13D-28 G29 595 (SURFACE LOCATION), located as shown in the SW 1/4 NE 1/4 of Section 29, T5S, R95W, 6th P.M., Garfield County, Colorado.

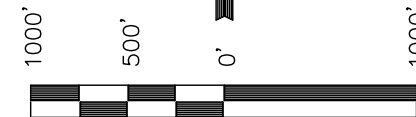
BASIS OF ELEVATION

SPOT ELEVATION AT THE NORTHWEST CORNER OF SECTION 30, T5S, R95W, 6th P.M. TAKEN FROM THE FORKED GULCH QUADRANGLE, COLORADO, GARFIELD COUNTY, 7.5 MINUTE SERIES (TOPOGRAPHICAL MAP) PUBLISHED BY THE UNITED STATES DEPARTMENT OF THE INTERIOR, GEOLOGICAL SURVEY. SAID ELEVATION IS MARKED AS BEING 5966 FEET.

BASIS OF BEARINGS

BASIS OF BEARINGS IS A G.P.S. OBSERVATION.

Sheet 1v of 11



SCALE

CERTIFICATE

THIS IS TO CERTIFY THAT THE ABOVE PLAT WAS PREPARED FROM FIELD NOTES OF ACTUAL SURVEYS MADE BY ME OR UNDER MY SUPERVISION AND THAT THE SAME ARE TRUE AND CORRECT TO THE BEST OF MY KNOWLEDGE AND BELIEF.

Revised: 06-30-10 D.R.B.
Revised: 06-10-10 D.R.B.

REGISTERED LAND SURVEYOR
REGISTRATION NO. 17492
STATE OF COLORADO

○ TARGET
○ BOTTOM HOLE

UINTAH ENGINEERING & LAND SURVEYING
85 SOUTH 200 EAST - VERNAL, UTAH 84078
(435) 789-1017

SCALE 1" = 1000'	DATE SURVEYED: 02-13-08	DATE DRAWN: 04-22-08
PARTY G.O. D.S. D.R.B.	REFERENCES G.L.O. PLAT	
WEATHER COLD	FILE EnCana OIL & GAS (USA) INC.	

W.C. 1916 Brass
Cap 2.3' High, Post
Lat: 39.594056
Long: 108.068661

T5S, R95W, 6th P.M.

EnCana OIL & GAS (USA) INC.

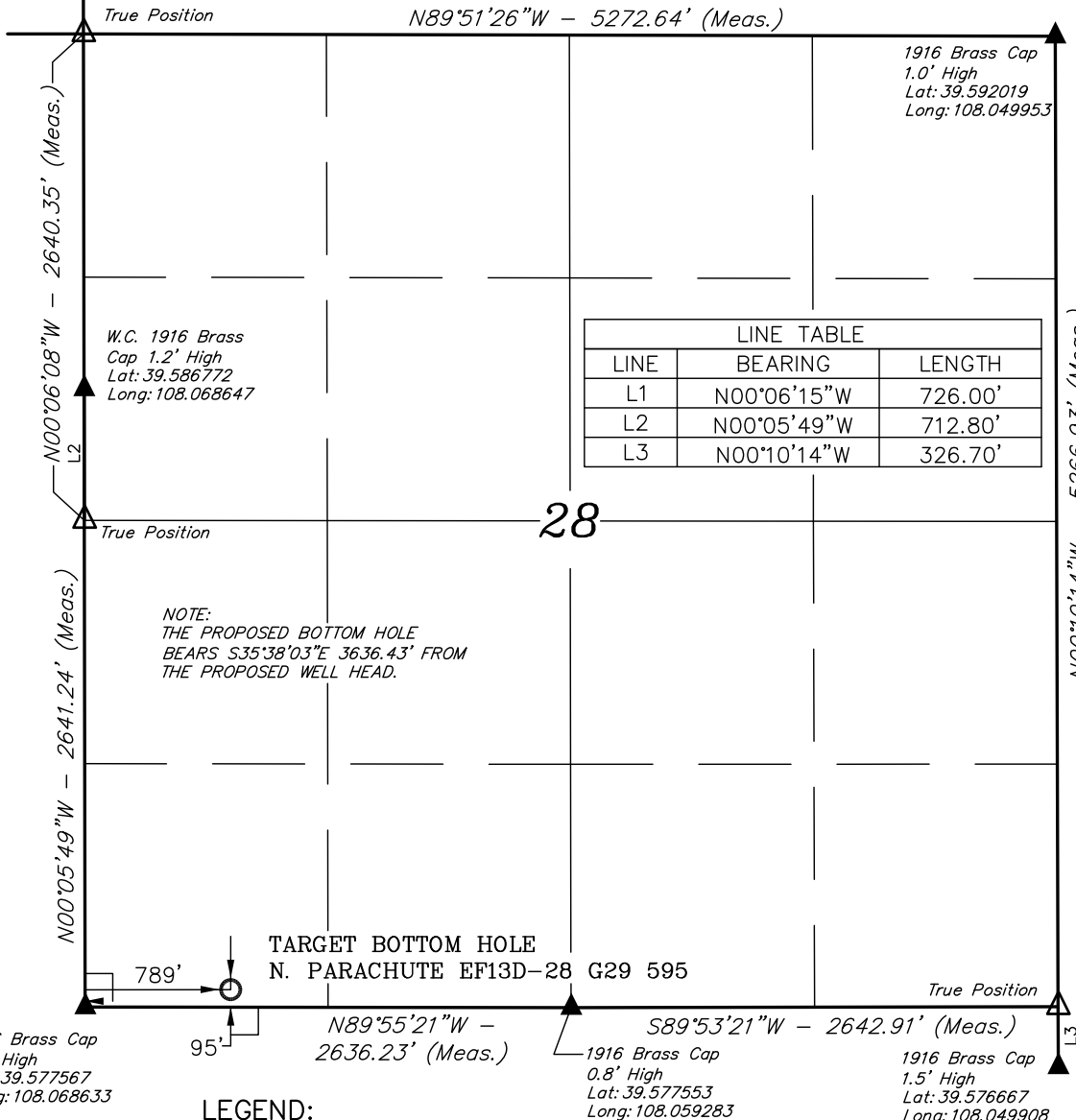
Well location, N. PARACHUTE EF13D-28 G29 595 (TARGET BOTTOM HOLE), located as shown in the SW 1/4 SW 1/4 of Section 28, T5S, R95W, 6th P.M., Garfield County, Colorado.

BASIS OF ELEVATION

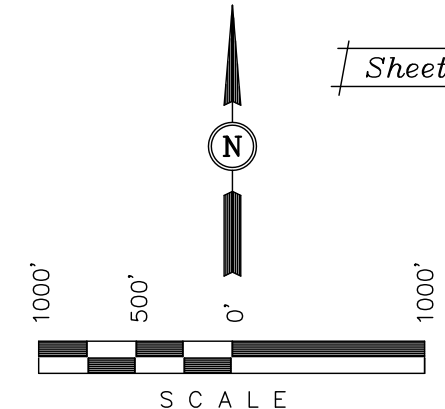
SPOT ELEVATION AT THE NORTHWEST CORNER OF SECTION 30, T5S, R95W, 6th P.M. TAKEN FROM THE FORKED GULCH QUADRANGLE, COLORADO, GARFIELD COUNTY, 7.5 MINUTE SERIES (TOPOGRAPHICAL MAP) PUBLISHED BY THE UNITED STATES DEPARTMENT OF THE INTERIOR, GEOLOGICAL SURVEY. SAID ELEVATION IS MARKED AS BEING 5966 FEET.

BASIS OF BEARINGS

BASIS OF BEARINGS IS A G.P.S. OBSERVATION.

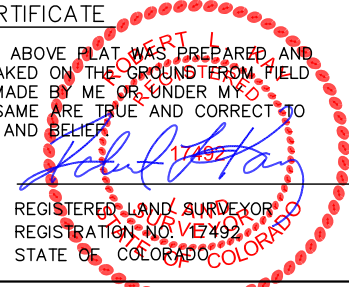


Sheet 1w of 11



CERTIFICATE

THIS IS TO CERTIFY THAT THE ABOVE PLAT WAS PREPARED AND LOCATION AS SHOWN WAS STAKED ON THE GROUND FROM FIELD NOTES OF ACTUAL SURVEYS MADE BY ME OR UNDER MY SUPERVISION AND THAT THE SAME ARE TRUE AND CORRECT TO THE BEST OF MY KNOWLEDGE AND BELIEF.



Revised: 06-30-10 D.R.B.
Revised: 06-10-10 D.R.B.

REGISTERED LAND SURVEYOR
REGISTRATION NO. 17492
STATE OF COLORADO

UINTAH ENGINEERING & LAND SURVEYING
85 SOUTH 200 EAST - VERNAL, UTAH 84078
(435) 789-1017

LEGEND:

- └─┘ = 90° SYMBOL
- = PROPOSED WELL HEAD.
- ▲ = SECTION CORNERS LOCATED.
- △ = SECTION CORNERS RE-ESTAB.

NAD 83 (TARGET BOTTOM HOLE)	
LATITUDE	= 39°34'40.17" (39.577825)
LONGITUDE	= 108°03'57.00" (108.065833)
NAD 27 (TARGET BOTTOM HOLE)	
LATITUDE	= 39°34'40.25" (39.577847)
LONGITUDE	= 108°03'54.72" (108.065200)

SCALE 1" = 1000'	DATE SURVEYED: 02-13-08	DATE DRAWN: 04-22-08
PARTY G.O. D.S. D.R.B.	REFERENCES G.L.O. PLAT	
WEATHER COLD	FILE EnCana OIL & GAS (USA) INC.	