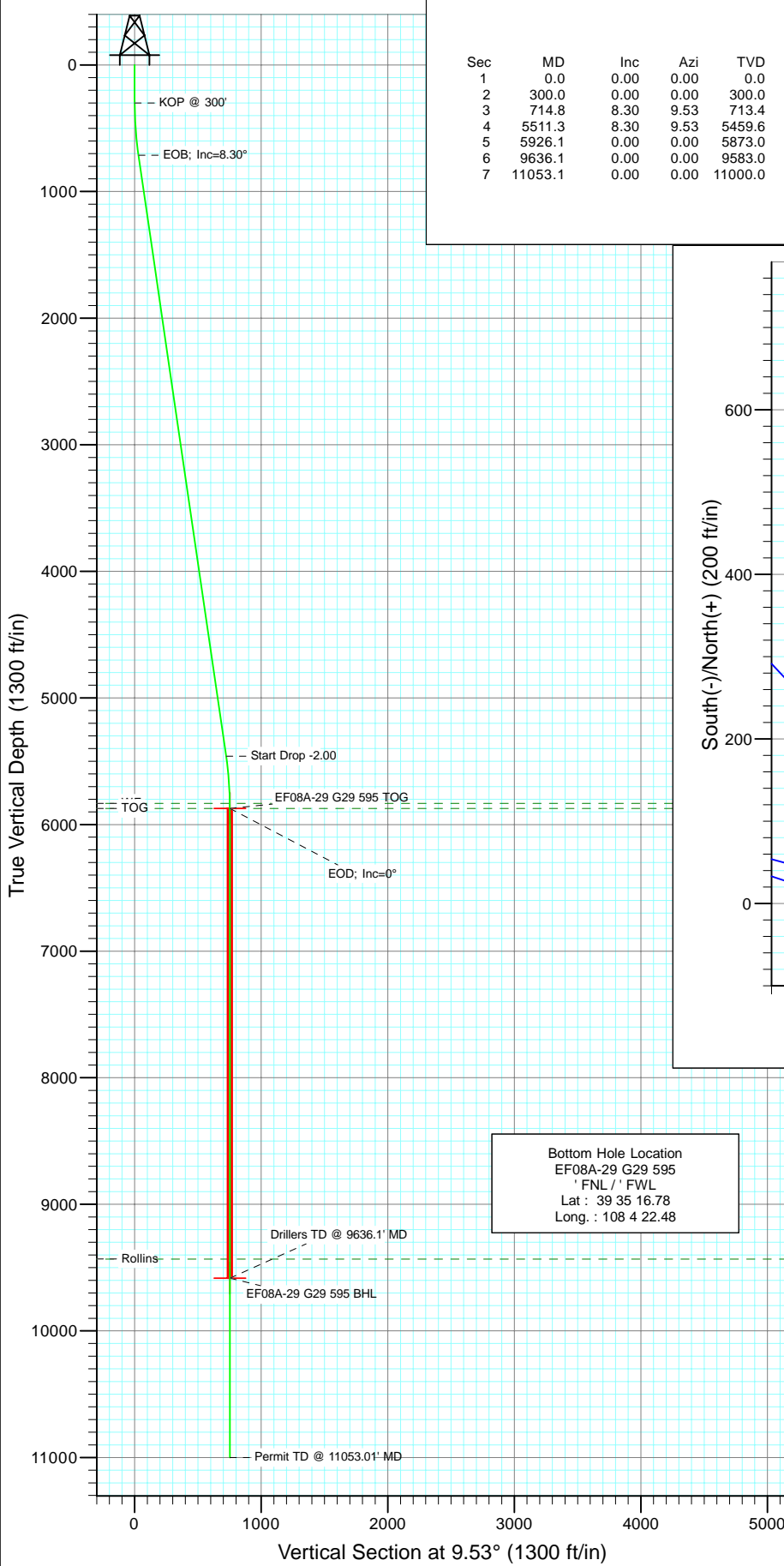
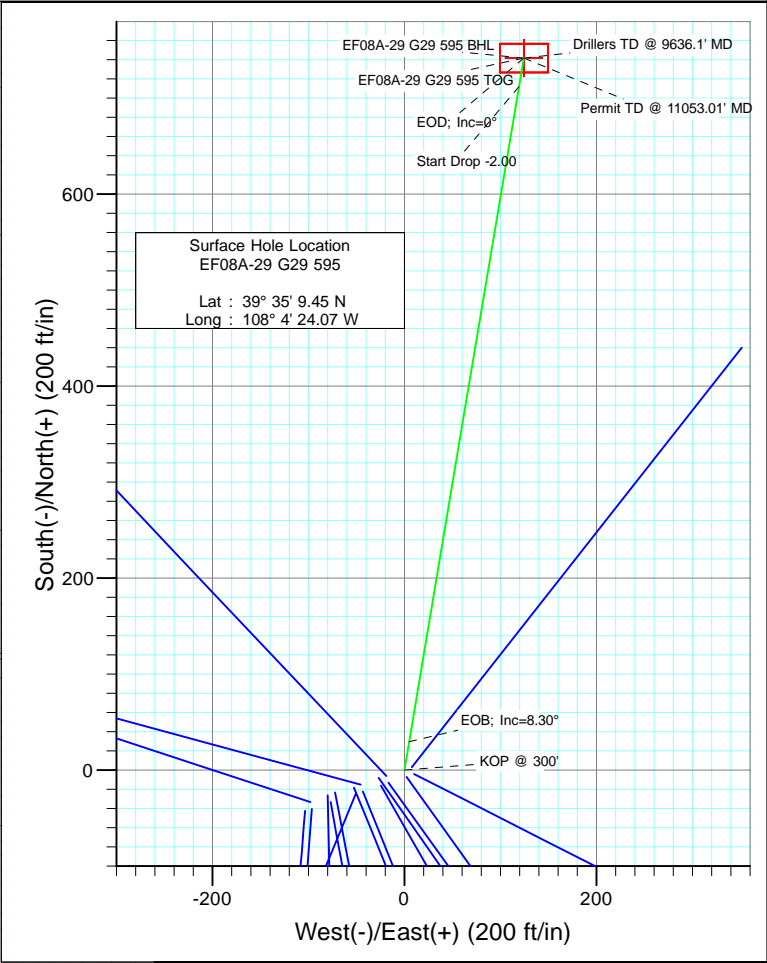




Project: North Piceance  
 Site: G29 595  
 Well: EF08A-29 G29 595  
 Wellbore: DD  
 Design: Plan #1

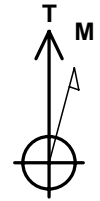


SECTION DETAILS										
Sec	MD	Inc	Azi	TVD	+N/-S	+E/-W	Dleg	TFace	VSec	Target
1	0.0	0.00	0.00	0.0	0.0	0.0	0.00	0.00	0.0	
2	300.0	0.00	0.00	300.0	0.0	0.0	0.00	0.00	0.0	
3	714.8	8.30	9.53	713.4	29.6	5.0	2.00	9.53	30.0	
4	5511.3	8.30	9.53	5459.6	712.1	119.5	0.00	0.00	722.1	
5	5926.1	0.00	0.00	5873.0	741.7	124.5	2.00	180.00	752.0	EF08A-29 G29 595 TOG
6	9636.1	0.00	0.00	9583.0	741.7	124.5	0.00	0.00	752.0	EF08A-29 G29 595 BHL
7	11053.1	0.00	0.00	11000.0	741.7	124.5	0.00	0.00	752.0	



Bottom Hole Location  
 EF08A-29 G29 595  
 ' FNL / ' FWL  
 Lat : 39 35 16.78  
 Long : 108 4 22.48

FORMATION TOP DETAILS		
TVDPath	MDPath	Formation
5833.0	5886.1	WF
5873.0	5926.1	TOG
9433.0	9486.1	Rollins



Azimuths to True North  
 Magnetic North: 10.50°  
 Magnetic Field  
 Strength: 52417.8snT  
 Dip Angle: 65.84°  
 Date: 6/18/2010  
 Model: IGRF200510

DESIGN DETAILS: Plan #1					
105XXX: BH					
KBE @ 6118.0ft (Original Well Elev)					
Target	Azimuth	Origin	N/S	E/W	From TVD
EF08A-29 G29 595 BHL	9.53	Slot	0.0	0.0	0.0

# Cathedral Energy Services

## Planning Report

<b>Database:</b> EDM 5000.1 US Multi Users DB	<b>Local Co-ordinate Reference:</b> Well EF08A-29 G29 595
<b>Company:</b> EnCana Oil & Gas (USA) Inc	<b>TVD Reference:</b> KBE @ 6118.0ft (Original Well Elev)
<b>Project:</b> North Piceance	<b>MD Reference:</b> KBE @ 6118.0ft (Original Well Elev)
<b>Site:</b> G29 595	<b>North Reference:</b> True
<b>Well:</b> EF08A-29 G29 595	<b>Survey Calculation Method:</b> Minimum Curvature
<b>Wellbore:</b> DD	
<b>Design:</b> Plan #1	

<b>Project</b> North Piceance		
<b>Map System:</b> US State Plane 1983	<b>System Datum:</b> Mean Sea Level	
<b>Geo Datum:</b> North American Datum 1983		
<b>Map Zone:</b> Colorado Central Zone		

<b>Site</b> G29 595					
<b>Site Position:</b>		<b>Northing:</b>	1,648,557.90 ft	<b>Latitude:</b>	39° 35' 9.12 N
<b>From:</b>	Lat/Long	<b>Easting:</b>	2,274,729.57 ft	<b>Longitude:</b>	108° 4' 25.32 W
<b>Position Uncertainty:</b>	0.0 ft	<b>Slot Radius:</b>	13.200 in	<b>Grid Convergence:</b>	-1.62 °

<b>Well</b> EF08A-29 G29 595					
<b>Well Position</b>	<b>+N/-S</b>	0.0 ft	<b>Northing:</b>	1,648,588.49 ft	<b>Latitude:</b> 39° 35' 9.45 N
	<b>+E/-W</b>	0.0 ft	<b>Easting:</b>	2,274,828.34 ft	<b>Longitude:</b> 108° 4' 24.07 W
<b>Position Uncertainty</b>		0.0 ft	<b>Wellhead Elevation:</b>	ft	<b>Ground Level:</b> 6,003.0 ft

<b>Wellbore</b> DD					
<b>Magnetics</b>	<b>Model Name</b>	<b>Sample Date</b>	<b>Declination</b>	<b>Dip Angle</b>	<b>Field Strength</b>
	IGRF200510	6/18/2010	(°) 10.50	(°) 65.84	(nT) 52,418

<b>Design</b> Plan #1					
<b>Audit Notes:</b>					
<b>Version:</b>	<b>Phase:</b>	PLAN	<b>Tie On Depth:</b>	0.0	
<b>Vertical Section:</b>	<b>Depth From (TVD)</b>	<b>+N/-S</b>	<b>+E/-W</b>	<b>Direction</b>	
	(ft)	(ft)	(ft)	(°)	
	0.0	0.0	0.0	9.53	

<b>Plan Sections</b>										
Measured Depth (ft)	Inclination (°)	Azimuth (°)	Vertical Depth (ft)	+N/-S (ft)	+E/-W (ft)	Dogleg Rate (°/100ft)	Build Rate (°/100ft)	Turn Rate (°/100ft)	TFO (°)	Target
0.0	0.00	0.00	0.0	0.0	0.0	0.00	0.00	0.00	0.00	
300.0	0.00	0.00	300.0	0.0	0.0	0.00	0.00	0.00	0.00	
714.8	8.30	9.53	713.4	29.6	5.0	2.00	2.00	0.00	9.53	
5,511.3	8.30	9.53	5,459.6	712.1	119.5	0.00	0.00	0.00	0.00	
5,926.1	0.00	0.00	5,873.0	741.7	124.5	2.00	-2.00	0.00	180.00	EF08A-29 G29 595 T
9,636.1	0.00	0.00	9,583.0	741.7	124.5	0.00	0.00	0.00	0.00	EF08A-29 G29 595 B
11,053.1	0.00	0.00	11,000.0	741.7	124.5	0.00	0.00	0.00	0.00	

# Cathedral Energy Services

## Planning Report

<b>Database:</b>	EDM 5000.1 US Multi Users DB	<b>Local Co-ordinate Reference:</b>	Well EF08A-29 G29 595
<b>Company:</b>	EnCana Oil & Gas (USA) Inc	<b>TVD Reference:</b>	KBE @ 6118.0ft (Original Well Elev)
<b>Project:</b>	North Piceance	<b>MD Reference:</b>	KBE @ 6118.0ft (Original Well Elev)
<b>Site:</b>	G29 595	<b>North Reference:</b>	True
<b>Well:</b>	EF08A-29 G29 595	<b>Survey Calculation Method:</b>	Minimum Curvature
<b>Wellbore:</b>	DD		
<b>Design:</b>	Plan #1		

Planned Survey									
Measured Depth (ft)	Inclination (°)	Azimuth (°)	Vertical Depth (ft)	+N/-S (ft)	+E/-W (ft)	Vertical Section (ft)	Dogleg Rate (°/100ft)	Build Rate (°/100ft)	Comments / Formations
0.0	0.00	0.00	0.0	0.0	0.0	0.0	0.00	0.00	
100.0	0.00	0.00	100.0	0.0	0.0	0.0	0.00	0.00	
200.0	0.00	0.00	200.0	0.0	0.0	0.0	0.00	0.00	
300.0	0.00	0.00	300.0	0.0	0.0	0.0	0.00	0.00	KOP @ 300'
400.0	2.00	9.53	400.0	1.7	0.3	1.7	2.00	2.00	
500.0	4.00	9.53	499.8	6.9	1.2	7.0	2.00	2.00	
600.0	6.00	9.53	599.5	15.5	2.6	15.7	2.00	2.00	
700.0	8.00	9.53	698.7	27.5	4.6	27.9	2.00	2.00	
714.8	8.30	9.53	713.4	29.6	5.0	30.0	2.00	2.00	EOB; Inc=8.30°
800.0	8.30	9.53	797.7	41.7	7.0	42.3	0.00	0.00	
900.0	8.30	9.53	896.6	55.9	9.4	56.7	0.00	0.00	
1,000.0	8.30	9.53	995.6	70.1	11.8	71.1	0.00	0.00	
1,100.0	8.30	9.53	1,094.5	84.4	14.2	85.6	0.00	0.00	
1,200.0	8.30	9.53	1,193.5	98.6	16.5	100.0	0.00	0.00	
1,300.0	8.30	9.53	1,292.4	112.8	18.9	114.4	0.00	0.00	
1,400.0	8.30	9.53	1,391.4	127.1	21.3	128.8	0.00	0.00	
1,500.0	8.30	9.53	1,490.3	141.3	23.7	143.3	0.00	0.00	
1,600.0	8.30	9.53	1,589.3	155.5	26.1	157.7	0.00	0.00	
1,700.0	8.30	9.53	1,688.2	169.8	28.5	172.1	0.00	0.00	
1,800.0	8.30	9.53	1,787.2	184.0	30.9	186.6	0.00	0.00	
1,900.0	8.30	9.53	1,886.1	198.2	33.3	201.0	0.00	0.00	
2,000.0	8.30	9.53	1,985.1	212.4	35.7	215.4	0.00	0.00	
2,100.0	8.30	9.53	2,084.1	226.7	38.0	229.8	0.00	0.00	
2,200.0	8.30	9.53	2,183.0	240.9	40.4	244.3	0.00	0.00	
2,300.0	8.30	9.53	2,282.0	255.1	42.8	258.7	0.00	0.00	
2,400.0	8.30	9.53	2,380.9	269.4	45.2	273.1	0.00	0.00	
2,500.0	8.30	9.53	2,479.9	283.6	47.6	287.6	0.00	0.00	
2,600.0	8.30	9.53	2,578.8	297.8	50.0	302.0	0.00	0.00	
2,700.0	8.30	9.53	2,677.8	312.1	52.4	316.4	0.00	0.00	
2,800.0	8.30	9.53	2,776.7	326.3	54.8	330.8	0.00	0.00	
2,900.0	8.30	9.53	2,875.7	340.5	57.1	345.3	0.00	0.00	
3,000.0	8.30	9.53	2,974.6	354.7	59.5	359.7	0.00	0.00	
3,100.0	8.30	9.53	3,073.6	369.0	61.9	374.1	0.00	0.00	
3,200.0	8.30	9.53	3,172.5	383.2	64.3	388.6	0.00	0.00	
3,300.0	8.30	9.53	3,271.5	397.4	66.7	403.0	0.00	0.00	
3,400.0	8.30	9.53	3,370.5	411.7	69.1	417.4	0.00	0.00	
3,500.0	8.30	9.53	3,469.4	425.9	71.5	431.9	0.00	0.00	
3,600.0	8.30	9.53	3,568.4	440.1	73.9	446.3	0.00	0.00	
3,700.0	8.30	9.53	3,667.3	454.4	76.3	460.7	0.00	0.00	
3,800.0	8.30	9.53	3,766.3	468.6	78.6	475.1	0.00	0.00	
3,900.0	8.30	9.53	3,865.2	482.8	81.0	489.6	0.00	0.00	
4,000.0	8.30	9.53	3,964.2	497.0	83.4	504.0	0.00	0.00	
4,100.0	8.30	9.53	4,063.1	511.3	85.8	518.4	0.00	0.00	
4,200.0	8.30	9.53	4,162.1	525.5	88.2	532.9	0.00	0.00	
4,300.0	8.30	9.53	4,261.0	539.7	90.6	547.3	0.00	0.00	
4,400.0	8.30	9.53	4,360.0	554.0	93.0	561.7	0.00	0.00	
4,500.0	8.30	9.53	4,458.9	568.2	95.4	576.1	0.00	0.00	
4,600.0	8.30	9.53	4,557.9	582.4	97.8	590.6	0.00	0.00	
4,700.0	8.30	9.53	4,656.8	596.7	100.1	605.0	0.00	0.00	
4,800.0	8.30	9.53	4,755.8	610.9	102.5	619.4	0.00	0.00	
4,900.0	8.30	9.53	4,854.8	625.1	104.9	633.9	0.00	0.00	
5,000.0	8.30	9.53	4,953.7	639.3	107.3	648.3	0.00	0.00	

# Cathedral Energy Services

## Planning Report

<b>Database:</b>	EDM 5000.1 US Multi Users DB	<b>Local Co-ordinate Reference:</b>	Well EF08A-29 G29 595
<b>Company:</b>	EnCana Oil & Gas (USA) Inc	<b>TVD Reference:</b>	KBE @ 6118.0ft (Original Well Elev)
<b>Project:</b>	North Piceance	<b>MD Reference:</b>	KBE @ 6118.0ft (Original Well Elev)
<b>Site:</b>	G29 595	<b>North Reference:</b>	True
<b>Well:</b>	EF08A-29 G29 595	<b>Survey Calculation Method:</b>	Minimum Curvature
<b>Wellbore:</b>	DD		
<b>Design:</b>	Plan #1		

Planned Survey									
Measured Depth (ft)	Inclination (°)	Azimuth (°)	Vertical Depth (ft)	+N/-S (ft)	+E/-W (ft)	Vertical Section (ft)	Dogleg Rate (°/100ft)	Build Rate (°/100ft)	Comments / Formations
5,100.0	8.30	9.53	5,052.7	653.6	109.7	662.7	0.00	0.00	
5,200.0	8.30	9.53	5,151.6	667.8	112.1	677.1	0.00	0.00	
5,300.0	8.30	9.53	5,250.6	682.0	114.5	691.6	0.00	0.00	
5,400.0	8.30	9.53	5,349.5	696.3	116.9	706.0	0.00	0.00	
5,500.0	8.30	9.53	5,448.5	710.5	119.2	720.4	0.00	0.00	
5,511.3	8.30	9.53	5,459.6	712.1	119.5	722.1	0.00	0.00	Start Drop -2.00
5,600.0	6.52	9.53	5,547.6	723.4	121.4	733.5	2.00	-2.00	
5,700.0	4.52	9.53	5,647.1	732.9	123.0	743.1	2.00	-2.00	
5,800.0	2.52	9.53	5,747.0	738.9	124.0	749.3	2.00	-2.00	
5,886.1	0.80	9.53	5,833.0	741.4	124.4	751.8	2.00	-2.00	WF
5,900.0	0.52	9.53	5,846.9	741.5	124.5	751.9	2.00	-2.00	
5,926.1	0.00	0.00	5,873.0	741.7	124.5	752.0	2.00	-2.00	EOD; Inc=0° - TOG - EF08A-29 G29 595 TOG
6,000.0	0.00	0.00	5,946.9	741.7	124.5	752.0	0.00	0.00	
6,100.0	0.00	0.00	6,046.9	741.7	124.5	752.0	0.00	0.00	
6,200.0	0.00	0.00	6,146.9	741.7	124.5	752.0	0.00	0.00	
6,300.0	0.00	0.00	6,246.9	741.7	124.5	752.0	0.00	0.00	
6,400.0	0.00	0.00	6,346.9	741.7	124.5	752.0	0.00	0.00	
6,500.0	0.00	0.00	6,446.9	741.7	124.5	752.0	0.00	0.00	
6,600.0	0.00	0.00	6,546.9	741.7	124.5	752.0	0.00	0.00	
6,700.0	0.00	0.00	6,646.9	741.7	124.5	752.0	0.00	0.00	
6,800.0	0.00	0.00	6,746.9	741.7	124.5	752.0	0.00	0.00	
6,900.0	0.00	0.00	6,846.9	741.7	124.5	752.0	0.00	0.00	
7,000.0	0.00	0.00	6,946.9	741.7	124.5	752.0	0.00	0.00	
7,100.0	0.00	0.00	7,046.9	741.7	124.5	752.0	0.00	0.00	
7,200.0	0.00	0.00	7,146.9	741.7	124.5	752.0	0.00	0.00	
7,300.0	0.00	0.00	7,246.9	741.7	124.5	752.0	0.00	0.00	
7,400.0	0.00	0.00	7,346.9	741.7	124.5	752.0	0.00	0.00	
7,500.0	0.00	0.00	7,446.9	741.7	124.5	752.0	0.00	0.00	
7,600.0	0.00	0.00	7,546.9	741.7	124.5	752.0	0.00	0.00	
7,700.0	0.00	0.00	7,646.9	741.7	124.5	752.0	0.00	0.00	
7,800.0	0.00	0.00	7,746.9	741.7	124.5	752.0	0.00	0.00	
7,900.0	0.00	0.00	7,846.9	741.7	124.5	752.0	0.00	0.00	
8,000.0	0.00	0.00	7,946.9	741.7	124.5	752.0	0.00	0.00	
8,100.0	0.00	0.00	8,046.9	741.7	124.5	752.0	0.00	0.00	
8,200.0	0.00	0.00	8,146.9	741.7	124.5	752.0	0.00	0.00	
8,300.0	0.00	0.00	8,246.9	741.7	124.5	752.0	0.00	0.00	
8,400.0	0.00	0.00	8,346.9	741.7	124.5	752.0	0.00	0.00	
8,500.0	0.00	0.00	8,446.9	741.7	124.5	752.0	0.00	0.00	
8,600.0	0.00	0.00	8,546.9	741.7	124.5	752.0	0.00	0.00	
8,700.0	0.00	0.00	8,646.9	741.7	124.5	752.0	0.00	0.00	
8,800.0	0.00	0.00	8,746.9	741.7	124.5	752.0	0.00	0.00	
8,900.0	0.00	0.00	8,846.9	741.7	124.5	752.0	0.00	0.00	
9,000.0	0.00	0.00	8,946.9	741.7	124.5	752.0	0.00	0.00	
9,100.0	0.00	0.00	9,046.9	741.7	124.5	752.0	0.00	0.00	
9,200.0	0.00	0.00	9,146.9	741.7	124.5	752.0	0.00	0.00	
9,300.0	0.00	0.00	9,246.9	741.7	124.5	752.0	0.00	0.00	
9,400.0	0.00	0.00	9,346.9	741.7	124.5	752.0	0.00	0.00	
9,486.1	0.00	0.00	9,433.0	741.7	124.5	752.0	0.00	0.00	Rollins
9,500.0	0.00	0.00	9,446.9	741.7	124.5	752.0	0.00	0.00	
9,600.0	0.00	0.00	9,546.9	741.7	124.5	752.0	0.00	0.00	
9,636.1	0.00	0.00	9,583.0	741.7	124.5	752.0	0.00	0.00	Drillers TD @ 9636.1' MD - EF08A-29 G29 595
9,700.0	0.00	0.00	9,646.9	741.7	124.5	752.0	0.00	0.00	

# Cathedral Energy Services

## Planning Report

<b>Database:</b> EDM 5000.1 US Multi Users DB	<b>Local Co-ordinate Reference:</b> Well EF08A-29 G29 595
<b>Company:</b> EnCana Oil & Gas (USA) Inc	<b>TVD Reference:</b> KBE @ 6118.0ft (Original Well Elev)
<b>Project:</b> North Piceance	<b>MD Reference:</b> KBE @ 6118.0ft (Original Well Elev)
<b>Site:</b> G29 595	<b>North Reference:</b> True
<b>Well:</b> EF08A-29 G29 595	<b>Survey Calculation Method:</b> Minimum Curvature
<b>Wellbore:</b> DD	
<b>Design:</b> Plan #1	

Planned Survey									
Measured Depth (ft)	Inclination (°)	Azimuth (°)	Vertical Depth (ft)	+N/-S (ft)	+E/-W (ft)	Vertical Section (ft)	Dogleg Rate (°/100ft)	Build Rate (°/100ft)	Comments / Formations
9,800.0	0.00	0.00	9,746.9	741.7	124.5	752.0	0.00	0.00	
9,900.0	0.00	0.00	9,846.9	741.7	124.5	752.0	0.00	0.00	
10,000.0	0.00	0.00	9,946.9	741.7	124.5	752.0	0.00	0.00	
10,100.0	0.00	0.00	10,046.9	741.7	124.5	752.0	0.00	0.00	
10,200.0	0.00	0.00	10,146.9	741.7	124.5	752.0	0.00	0.00	
10,300.0	0.00	0.00	10,246.9	741.7	124.5	752.0	0.00	0.00	
10,400.0	0.00	0.00	10,346.9	741.7	124.5	752.0	0.00	0.00	
10,500.0	0.00	0.00	10,446.9	741.7	124.5	752.0	0.00	0.00	
10,600.0	0.00	0.00	10,546.9	741.7	124.5	752.0	0.00	0.00	
10,700.0	0.00	0.00	10,646.9	741.7	124.5	752.0	0.00	0.00	
10,800.0	0.00	0.00	10,746.9	741.7	124.5	752.0	0.00	0.00	
10,900.0	0.00	0.00	10,846.9	741.7	124.5	752.0	0.00	0.00	
11,000.0	0.00	0.00	10,946.9	741.7	124.5	752.0	0.00	0.00	
11,053.1	0.00	0.00	11,000.0	741.7	124.5	752.0	0.00	0.00	Permit TD @ 11053.01' MD

Targets									
Target Name	Dip Angle (°)	Dip Dir. (°)	TVD (ft)	+N/-S (ft)	+E/-W (ft)	Northing (ft)	Easting (ft)	Latitude	Longitude
EF08A-29 G29 595 TOC - hit/miss target - Shape - Point	0.00	0.00	5,873.0	741.7	124.5	1,649,326.33	2,274,973.77	39° 35' 16.78 N	108° 4' 22.48 W
EF08A-29 G29 595 BHL - plan hits target center - Rectangle (sides W30.0 H50.0 D0.0)	0.00	0.00	9,583.0	741.7	124.5	1,649,326.33	2,274,973.77	39° 35' 16.78 N	108° 4' 22.48 W

Formations					
Measured Depth (ft)	Vertical Depth (ft)	Name	Lithology	Dip (°)	Dip Direction (°)
5,886.1	5,833.0	WF		0.00	
5,926.1	5,873.0	TOG		0.00	
9,486.1	9,433.0	Rollins		0.00	

Plan Annotations				
Measured Depth (ft)	Vertical Depth (ft)	+N/-S (ft)	+E/-W (ft)	Comment
300.0	300.0	0.0	0.0	KOP @ 300'
714.8	713.4	29.6	5.0	EOB; Inc=8.30°
5,511.3	5,459.6	712.1	119.5	Start Drop -2.00
5,926.1	5,873.0	741.7	124.5	EOD; Inc=0°
9,636.1	9,583.0	741.7	124.5	Drillers TD @ 9636.1' MD
11,053.1	11,000.0	741.7	124.5	Permit TD @ 11053.01' MD